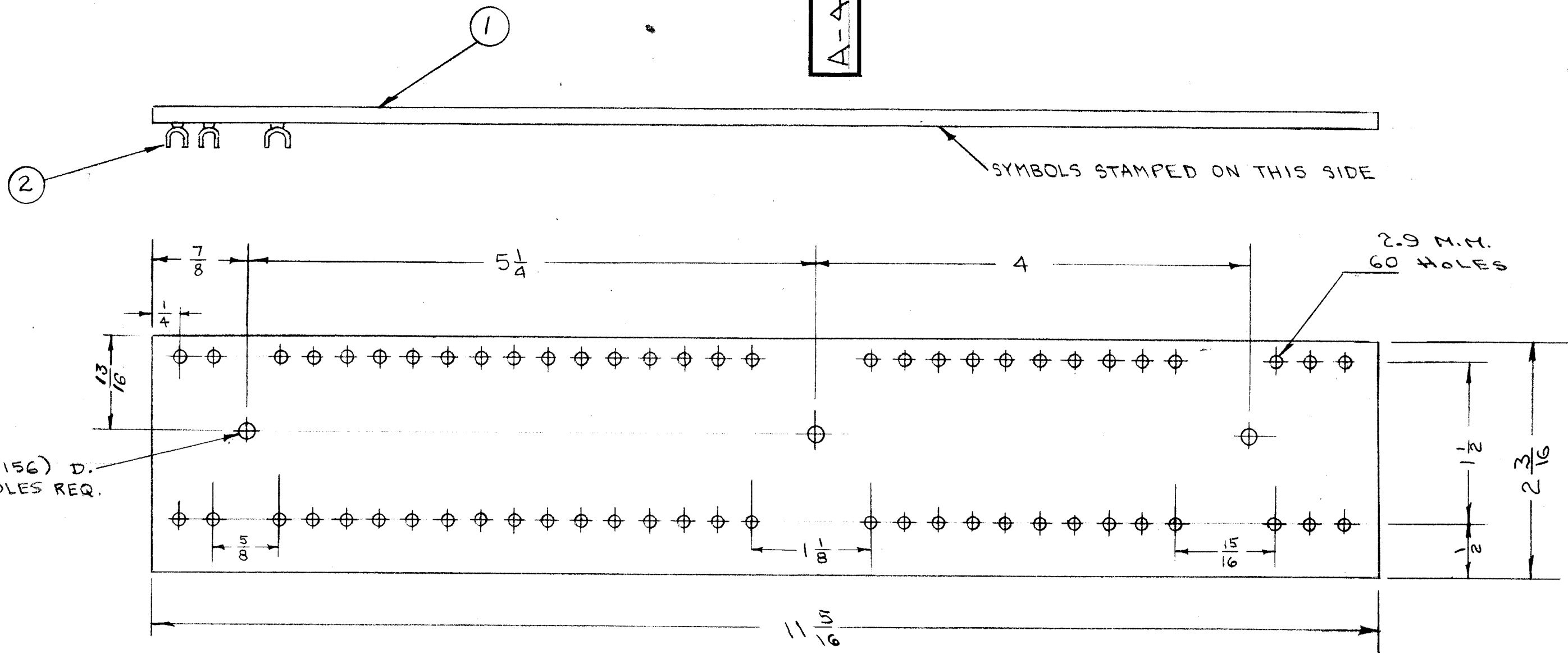


IF IT IS FOUND DESIRABLE TO CHANGE ANY TOLERANCE OR OTHER DETAIL SPECIFIED ON THIS DRAWING NOTIFY THE PURCHASER PROMPTLY.

MAXIMUM ALLOWABLE TOLERANCES HAVE BEEN DETERMINED AND DEVIATIONS WILL BE CAUSE FOR REJECTION. REMOVE ALL BURRS AND SHARP EDGES

A-495 A

APPLY S-113 FUNGUS RESISTANT VARNISH BEFORE LUGS ARE STAKED.



5/32 (.156) D. 3 HOLES REQ.

NOTE
DISTANCES BETWEEN ALL HOLES 5/16"
UNLESS OTHERWISE SPECIFIED

NOTE: DO NOT STAKE LUGS ON UNLETTERED BOARD REF. DWG. LD-153

60	2	TE-109-3	TERMINAL, LUGS, SPLIT	
1	1	PX-174	TERMINAL BD. (NO DRAWING)	
REQ.	ITEM	PART NO.	DESCRIPTION	SYMBOL
1/8			THE TECHNICAL MATERIEL CORP.	
PHENOLIC			MAMARONECK. NEW YORK	
MATERIAL			TERMINAL BD, RF GAIN	
XXXX LAMINATE			MODEL RSD-2	
TYPE & TEMPER			C.D.D. 10/10/54	KZ
HEAT TREAT. SPEC.			WDC	
S-113			WDC	
FINISH & SPEC. NO.			CHECKED	FINAL APPROVAL
			SUPERGEDES	
			RSD-1	
			A-495	A

A	1	COMPLETE REVISION	10/10/54	1	C.D.D.	WDC	KZ
ISSUE	ITEM	CHANGED FROM	DATE	CN. NO.	DRAFTS	CHECKER	ENG. APP.
TOLERANCES		SCALE:					
ALL OTHERS	DEC. DIM. ±	DRILL, PUNCH, COMMERCIAL STOCK					
	FRAC. DIM. ± 1/64	SIZES AND MANUFACTURERS					
	ANGULAR DIM. ±	TOLERANCES ARE NOT INCLUDED.					
		1	RSD-2	170	A-548	10-10-54	
		REQ. PER UNIT	MODEL	PROJECT NO.	ASS'Y. NO.	DATE	
			USED ON				