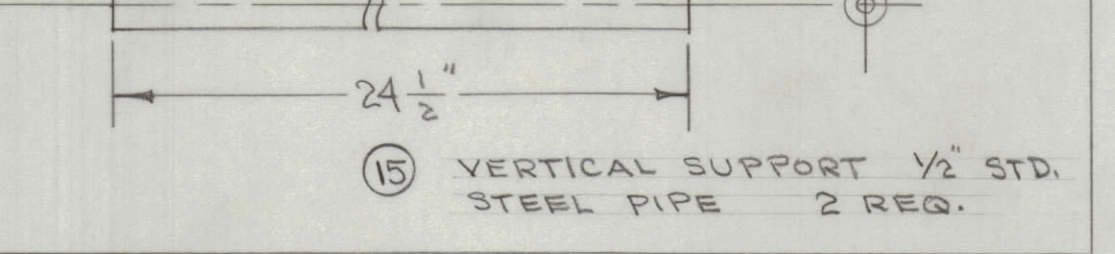
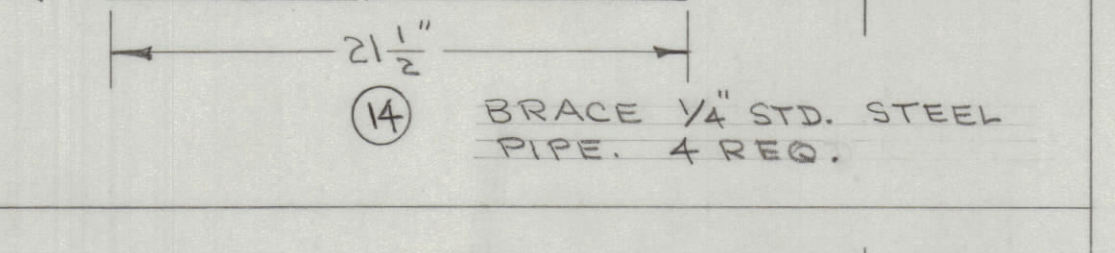
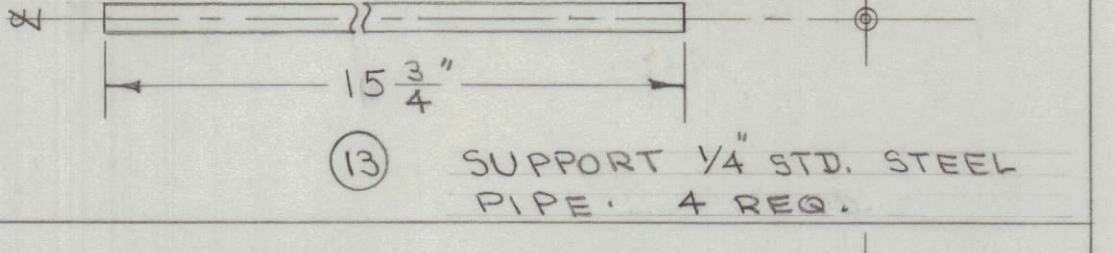
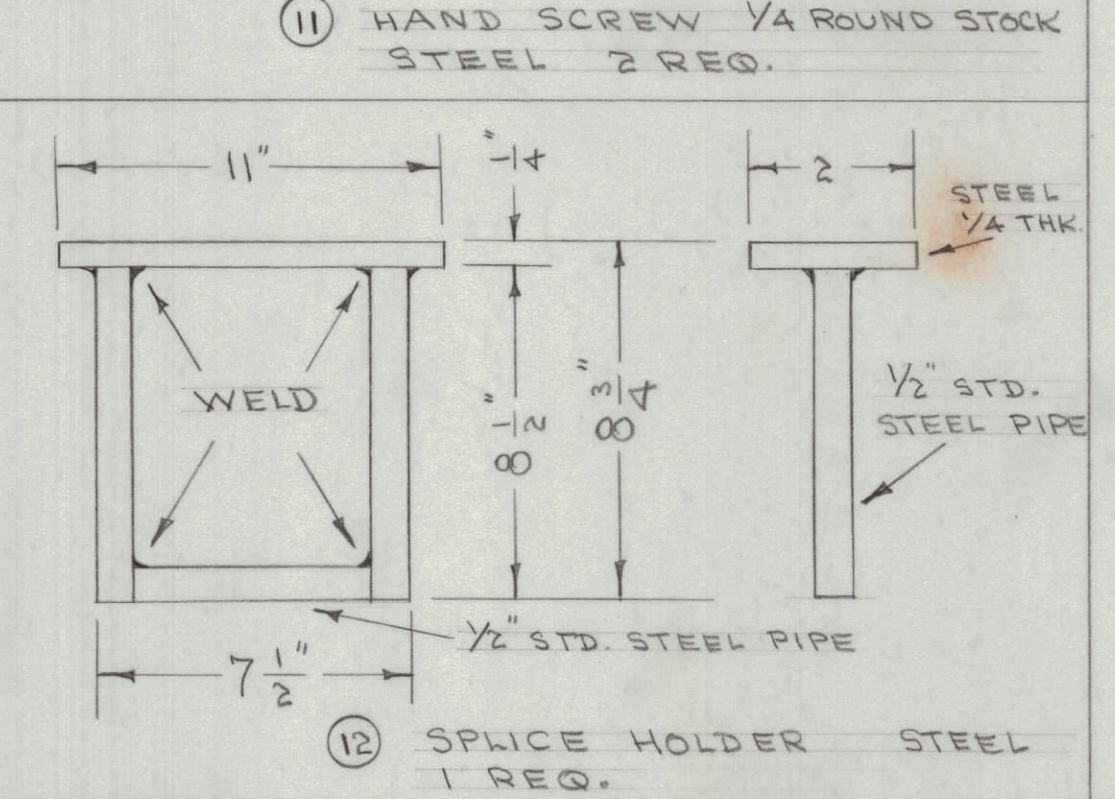
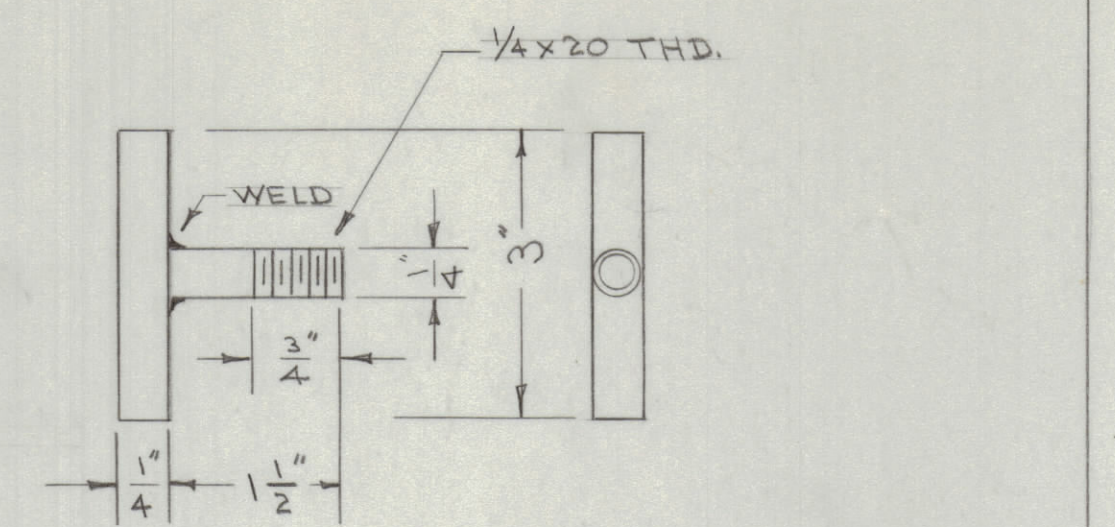
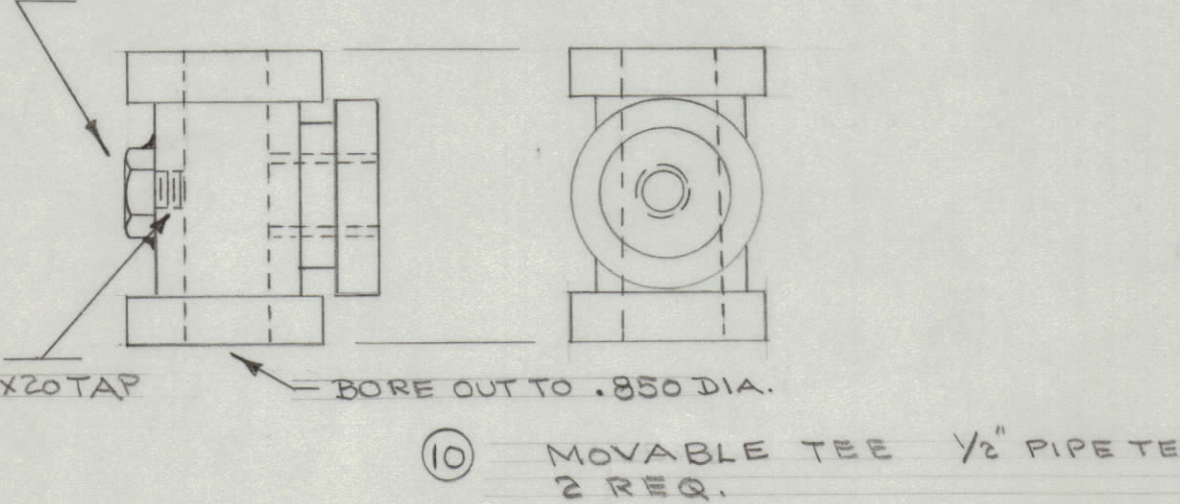
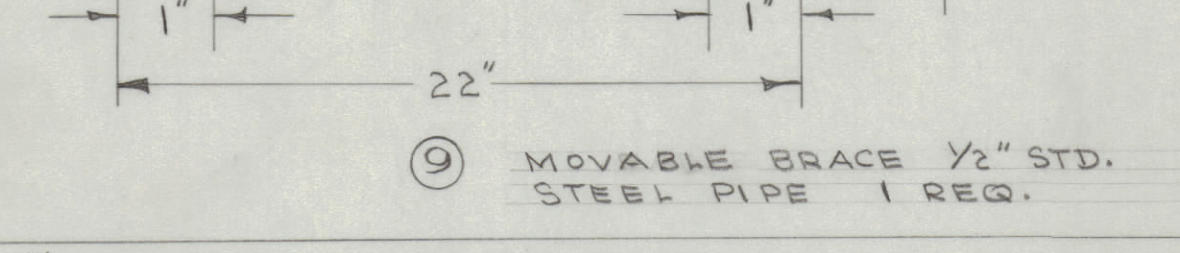
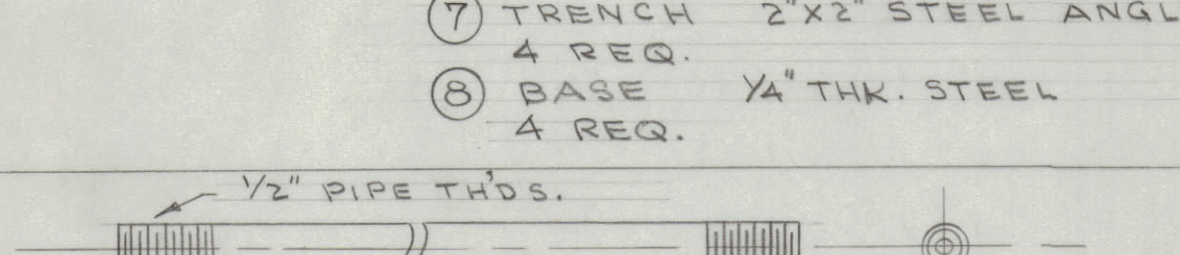
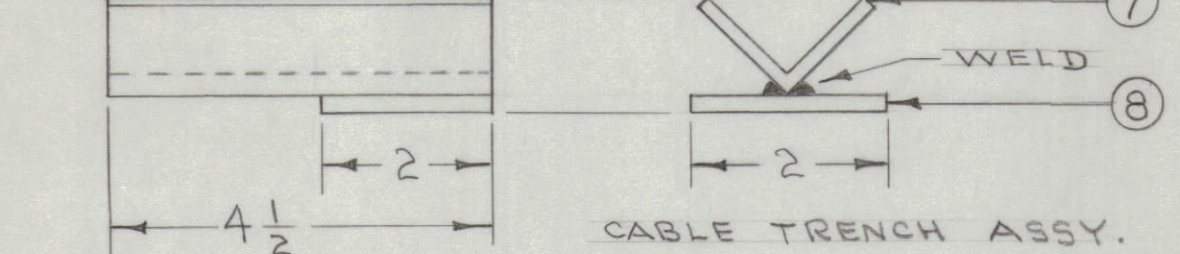
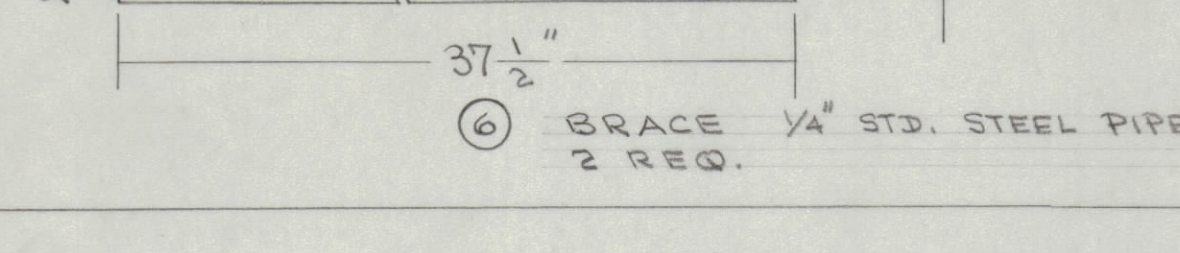
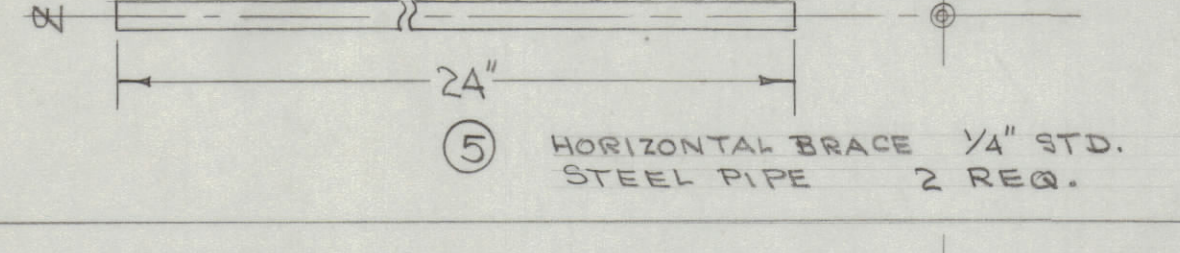
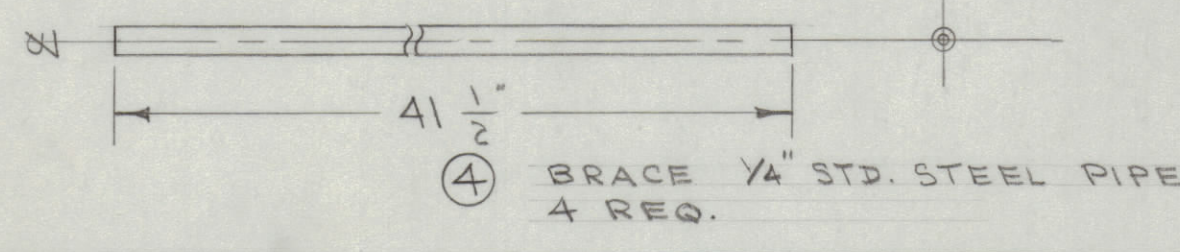
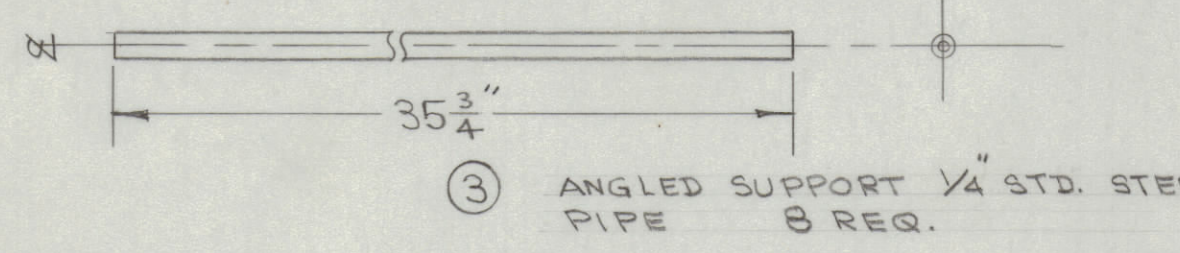
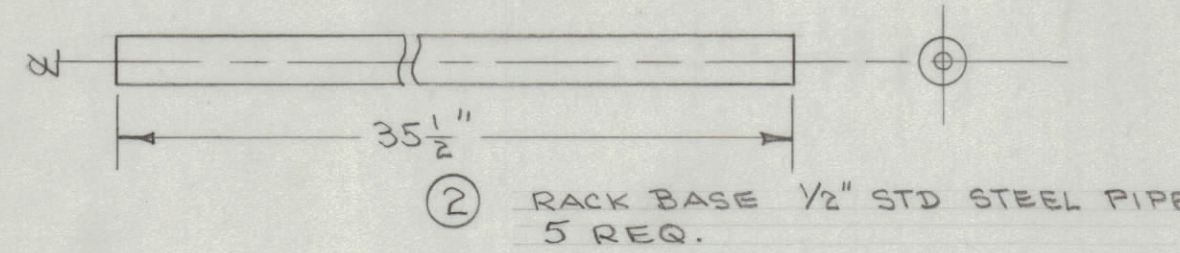
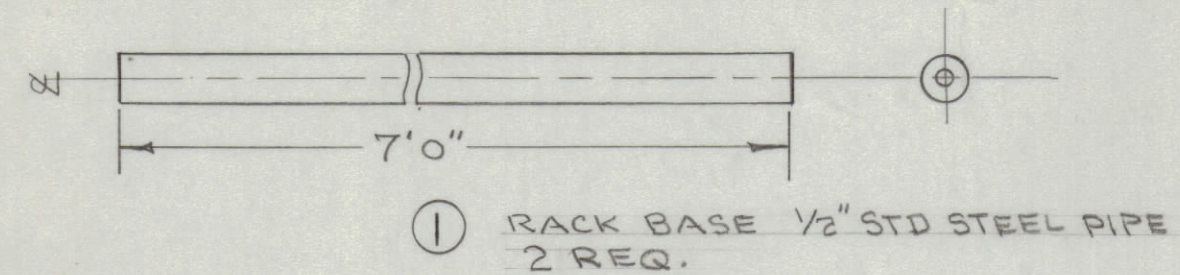
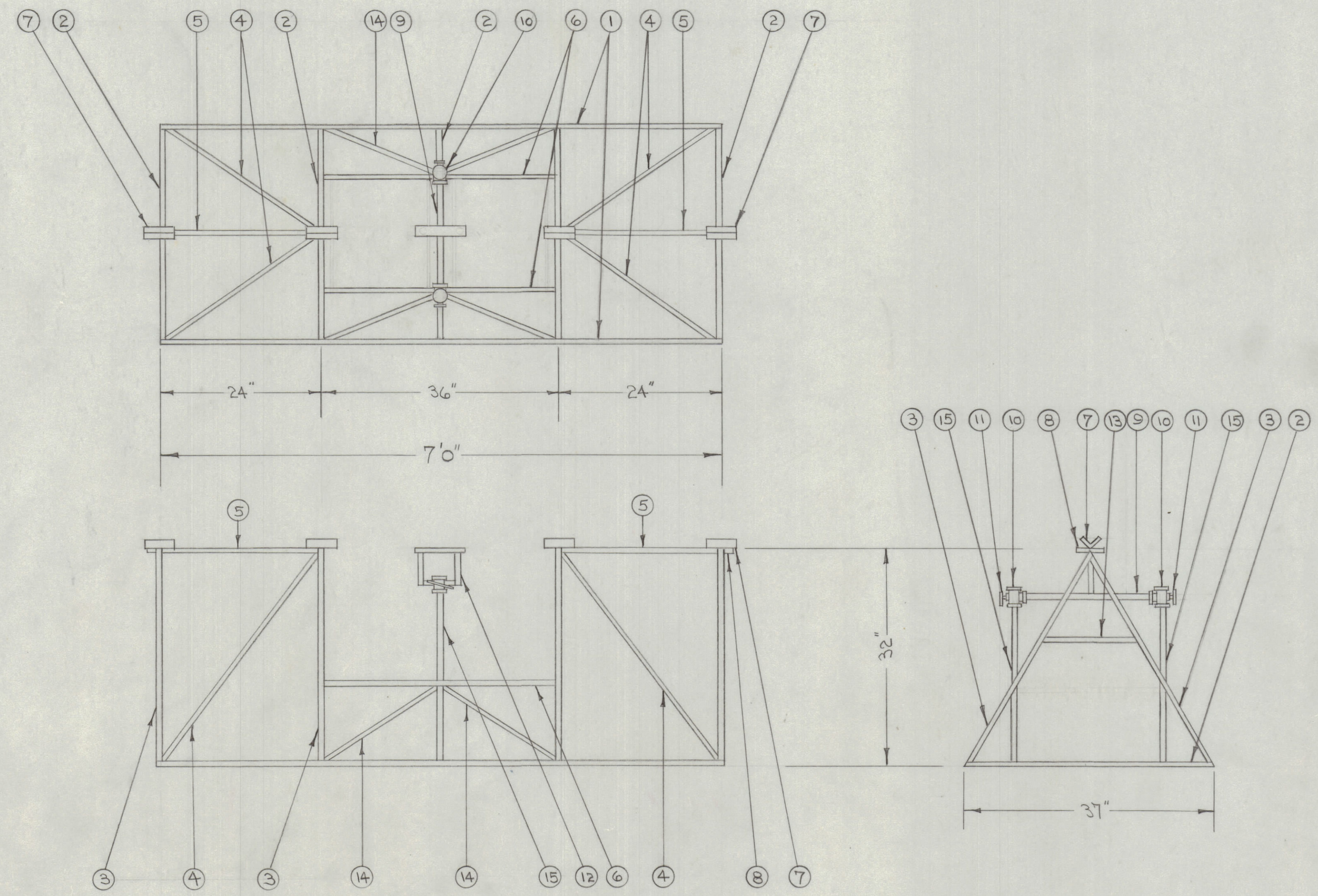


IF IT IS FOUND DESIRABLE TO CHANGE ANY TOLERANCE OR OTHER DETAIL SPECIFIED ON THIS DRAWING NOTIFY THE PURCHASER PROMPTLY.  
 MAXIMUM ALLOWABLE TOLERANCES HAVE BEEN DETERMINED AND DEVIATIONS WILL BE CAUSE FOR REJECTION. REMOVE ALL BURRS AND SHARP EDGES



NOTE:  
 1.- ALL JOINTS OF CABLE SPlicing RACK TO BE WELDED OR BRAZED.  
 2.- STEEL BAR STOCK MAY BE USED INSTEAD OF PIPE.  
 3.- ALL PIPES ON BASE AND MOVABLE STAND ARE 1/2" PIPES.  
 4.- ALL PIPES ON UPRIGHTS ARE 1/4" PIPES.



NOTICE TO PERSONS RECEIVING THIS DRAWING  
 THE TECHNICAL MATERIEL CORPORATION claims proprietary right in the material disclosed hereon. This drawing is issued in confidence for engineering information only and may not be reproduced or used to manufacture anything shown hereon without permission from THE TECHNICAL MATERIEL CORPORATION to the user. This drawing is loaned for mutual assistance and is subject to recall at any time.  
 Property of:  
 THE TECHNICAL MATERIEL CORPORATION  
 MAMARONECK, NEW YORK

REF: RW10F629A  
 RW10A528A

REQ. ITEM	PART NO.	DESCRIPTION	SYMBOL
#		THE TECHNICAL MATERIEL CORP. MAMARONECK, NEW YORK	
#		CABLE SPlicing RACK ASSEMBLY	
#		C.D.D. 7-7-53	
#		DRAWN	ELEC. DES. APP. MECH. DES. APP.
#		CHECKED	FINAL APPROVAL
#		FINISH & SPEC. NO.	A-488

ISSUE	ITEM	CHANGED FROM	DATE	CN. NO.	DRAFTS	CHECKER	ENG. APP.
TOLERANCES							
ALL OTHERS	DEC. DIM. ±	DRILL, PUNCH, COMMERCIAL STOCK SIZES AND MANUFACTURERS TOLERANCES ARE NOT INCLUDED.					
	FRAC. DIM. ±						
	ANGULAR DIM. ±						

A-488