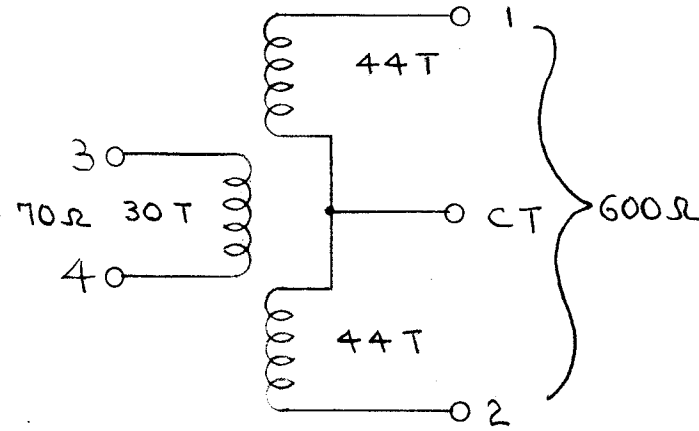
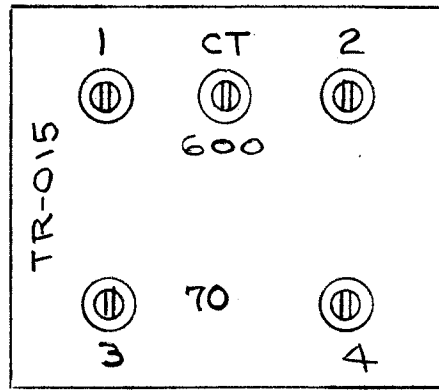


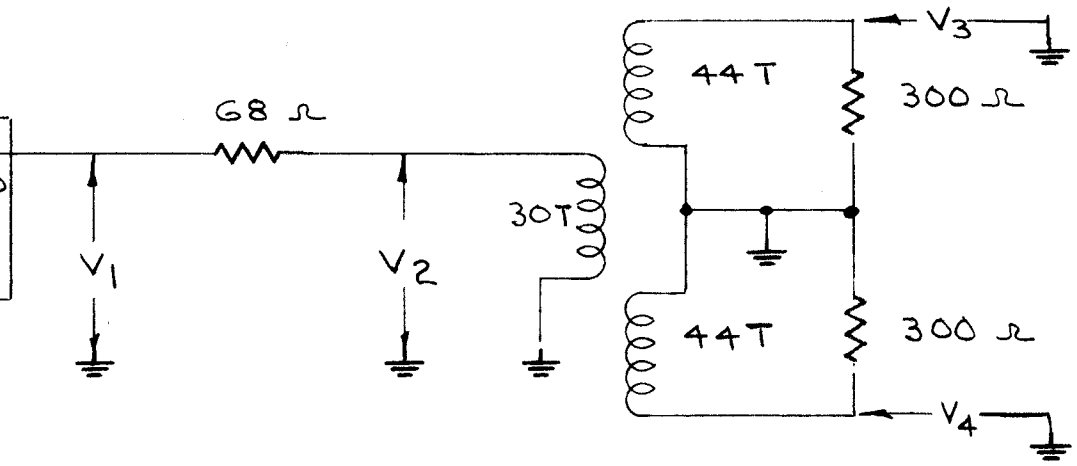
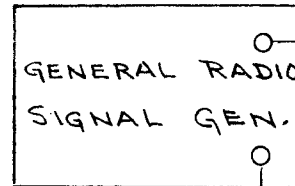
IF IT IS FOUND DESIRABLE TO CHANGE ANY TOLERANCE OR OTHER DETAIL SPECIFIED ON THIS DRAWING NOTIFY THE PURCHASER PROMPTLY.

MAXIMUM ALLOWABLE TOLERANCES HAVE BEEN DETERMINED AND DEVIATIONS WILL BE CAUSE FOR REJECTION. REMOVE ALL BURRS AND SHARP EDGES

METAL STAMP BEFORE PAINTING. 1/8 HIGH BLACK GOTHIC STAMPING AFTER PAINTING.



A-484 B

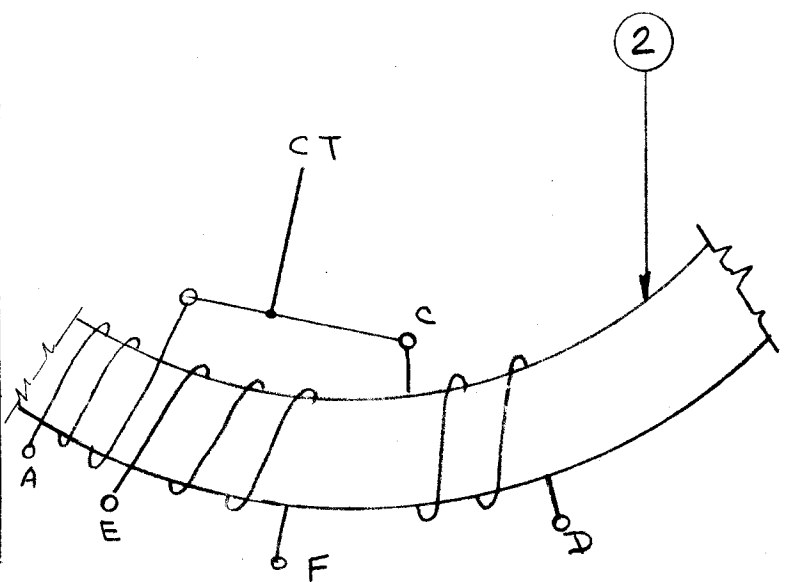
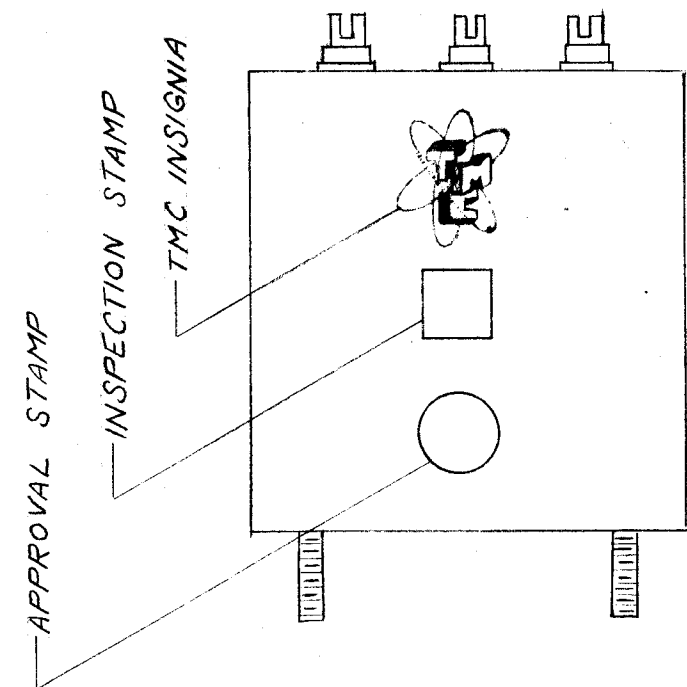


1 STAMP 600 - 70 - CT - TR-015 AS SHOWN.

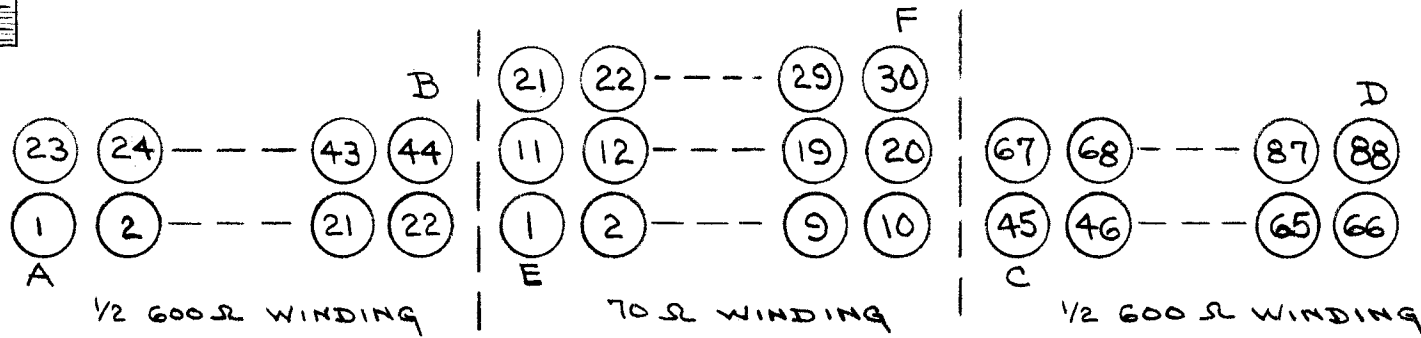
FINISH:
S-114 - ZINC CHROMATE PRIMER
S-115 - SMOOTH GREY ENAMEL.

f kc	R.F. VOLTS			
	V1	V2	V3	V4
20	1.0	.5	.68	.7
65	1.0	.54	.69	.73
200	1.0	.6	.7	.7

HEWLETT PACKARD VTVM



NOT TO BE RELEASED W/O AUTHORIZATION
AUTH. BY:
DATE:



REQ.	ITEM	PART NO.	DESCRIPTION	SYMBOL
1	6	NP-117	TMC INSIGNIA	
X	5	GL-100	POTTING COMPOUND	
X	4	BS-100	SOLDER, SOFT	
X	3	WI-102-9	WIRE	
1	2	CI-104	CORE	
1	1	BX-110	CASE	

STOCK SIZE		THE TECHNICAL MATERIEL CORP. MAMARONECK. NEW YORK	
MATERIAL		TR-015	
WEIGHT PER PC.		20 - 200 KC	
TYPE & TEMPER		DRAWN: <i>FAO 7/14/53</i> <i>ARB</i>	
HEAT TREAT. SPEC.		ELEC. DES. APP. <i>FAO</i> MECH. DES. APP. <i>PMB</i>	
FINISH & SPEC. NO.		CHECKED: <i>e.o.d.</i> FINAL APPROVAL: <i>PMB</i>	
		A-484 B	

ISSUE	ITEM	CHANGED FROM	DATE	CN. NO.	DRAFTS	CHECKER	ENG. APP.
B	1	FINISH Added	5/12/54	2			
A	1	REDRAWN	7/14/53	1			

TOLERANCES		SCALE:	
ALL OTHERS	DEC. DIM. ± FRAC. DIM. ± ANGULAR DIM. ±	DRILL, PUNCH, COMMERCIAL STOCK SIZES AND MANUFACTURERS TOLERANCES ARE NOT INCLUDED.	

MODEL	PROJECT NO.	ASS'Y. NO.	DATE
USED ON			