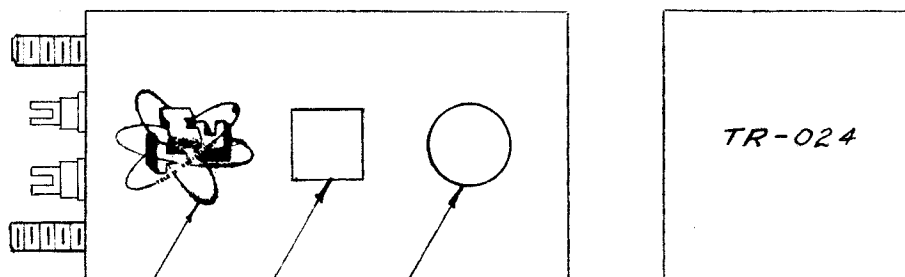
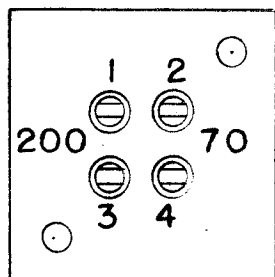


IF IT IS FOUND DESIRABLE TO CHANGE ANY TOLERANCE OR OTHER DETAIL SPECIFIED ON THIS DRAWING NOTIFY THE PURCHASER PROMPTLY.

MAXIMUM ALLOWABLE TOLERANCES HAVE BEEN DETERMINED AND DEVIATIONS WILL BE CAUSE FOR REJECTION. REMOVE ALL BURRS AND SHARP EDGES

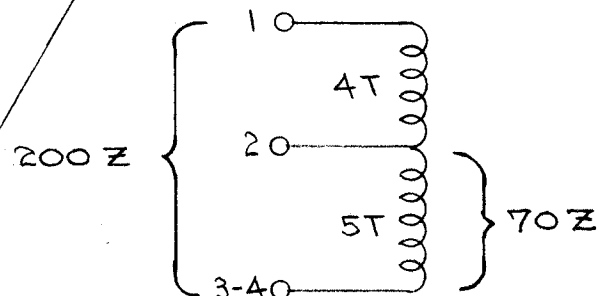
FINISH:  
 S-114 - ZINC CHROMATE PRIMER  
 S-115 - SMOOTH GRAY ENAMEL  
 DO NOT PAINT STUD END.  
 STAMPING AFTER PAINTING!  
 BLACK GOTHIC AS SHOWN

A  
A-469

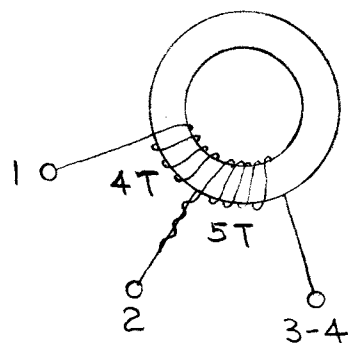


TMC INSIGNIA  
 INSPECTION STAMP  
 APPROVAL STAMP

FREQ. RANGE - 2 - 30 mc.  $\pm$  3db.  
 200  $\Omega$  TO 70  $\Omega$  UNBALANCED

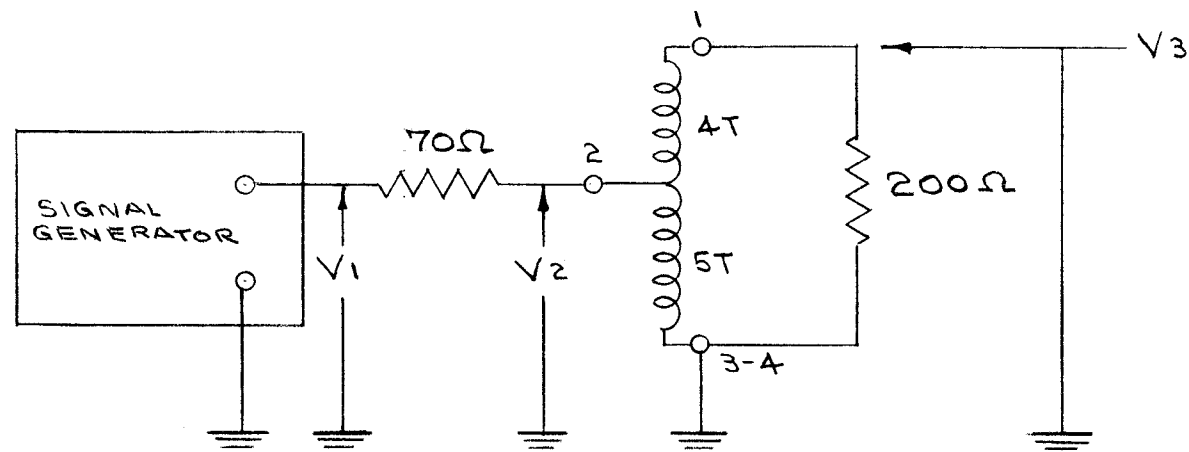


3-4 CONNECTED INTERNALLY



BOTH WINDINGS IN SAME DIRECTION

ELECTRICAL TEST DATA



f. mc.	R.F. VOLTS *		
	V <sub>1</sub>	V <sub>2</sub>	V <sub>3</sub>
2	1.05	.46	.80
8	1.05	.50	.85
32	1.05	.54	.80

\*VOLTAGES WITH HP VTVM

REQ.	ITEM	PART NO.	DESCRIPTION	SYMBOL
1	7	NP-117	TMC INSIGNIA	
X	6	WL-100-7	WIRE, BUSS BAR.	
X	5	GL-100	POTTING COMPOUND	
X	4	BS-100	SOLDER, SOFT	
X	3	WI-102-9	WIRE	
1	2	CI-100-2	CORE	
1	1	BX-103	CASE, TRANSFORMER	

#		THE TECHNICAL MATERIEL CORP. MAMARONECK. NEW YORK	
#		TRANSFORMER ANT. MATCHING	
#		TR-024	
#		C.D.D. 5-20-53	ARB
#		DRAWN	ELEC. DES. APP. MECH. DES. APP.
#		HEAT TREAT. SPEC.	FINAL APPROVAL
#		SEE NOTE	
#		FINISH & SPEC. NO.	

**NOT TO BE RELEASED  
 W/O AUTHORIZATION**

AUTH. BY \_\_\_\_\_  
 DATE: \_\_\_\_\_

ISSUE	ITEM	CHANGED FROM	DATE	CN. NO.	DRAFTS	CHECKER	ENG. APP.
A	1	STAMPING CLARIFIED	5/12/65	1	W.C.C.		

TOLERANCES: DEC. DIM.  $\pm$ , FRAC. DIM.  $\pm$ , ANGULAR DIM.  $\pm$

SCALE: #

DRILL, PUNCH, COMMERCIAL STOCK SIZES AND MANUFACTURERS TOLERANCES ARE NOT INCLUDED.

MODEL	PROJECT NO.	ASS'Y. NO.	DATE
-------	-------------	------------	------

USED ON

A-469 A