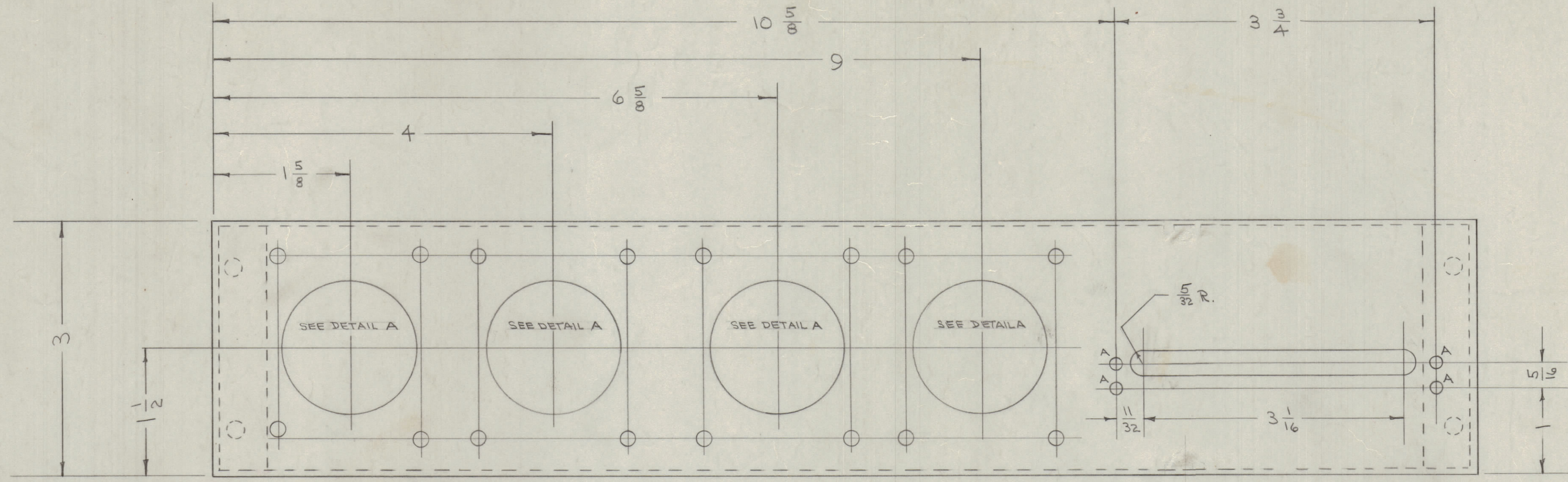
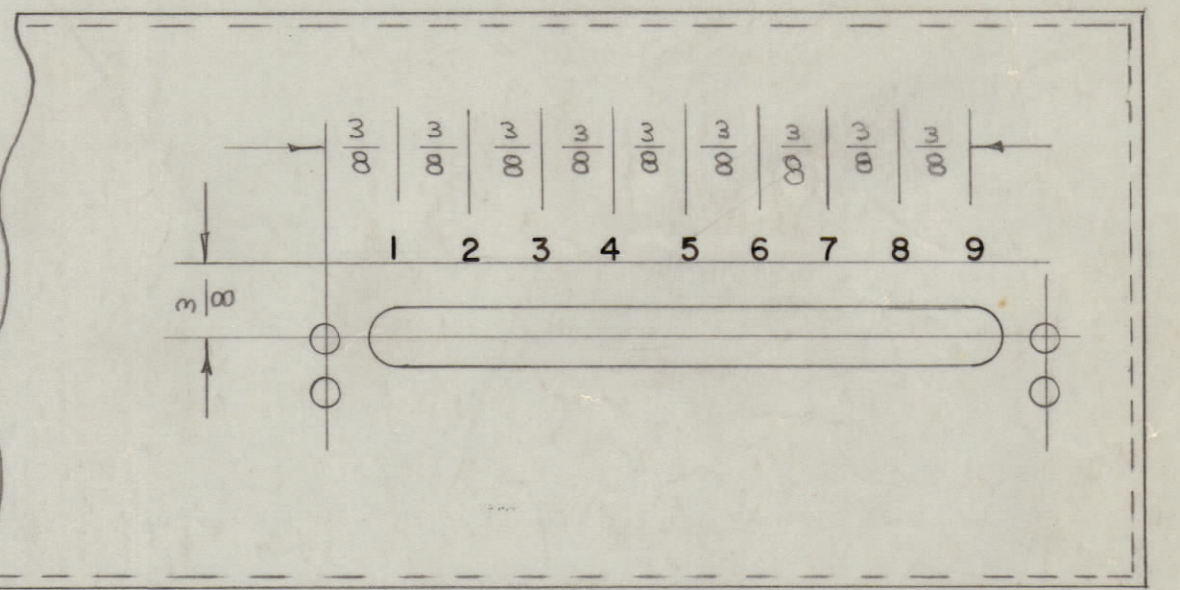


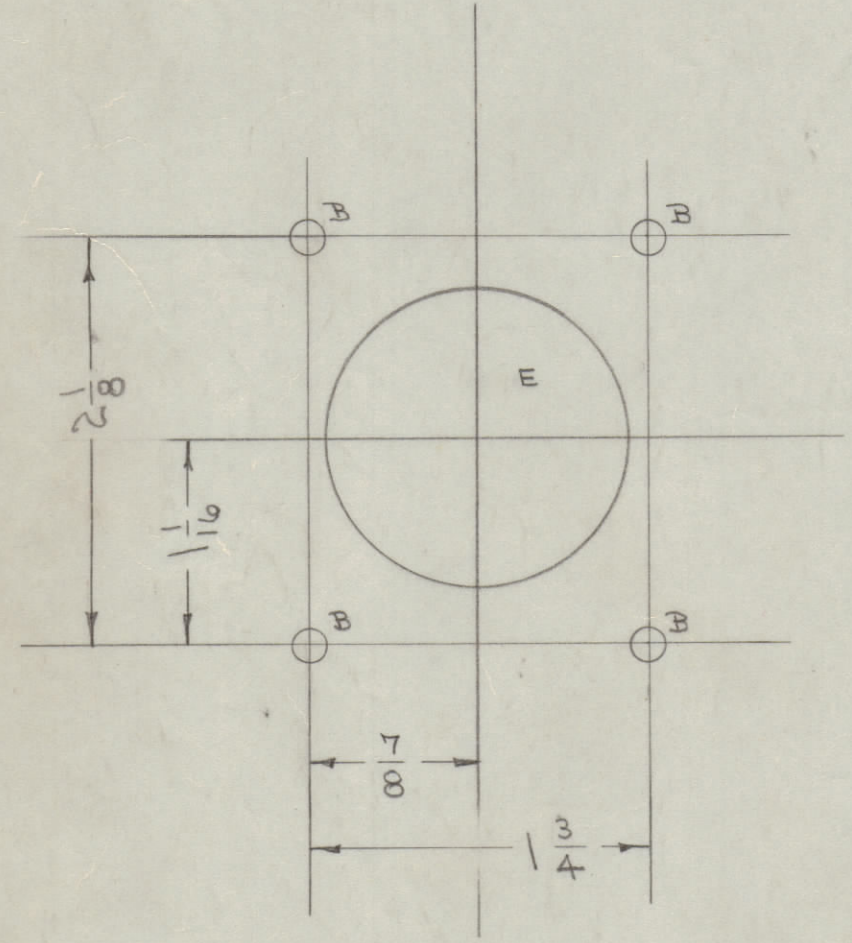
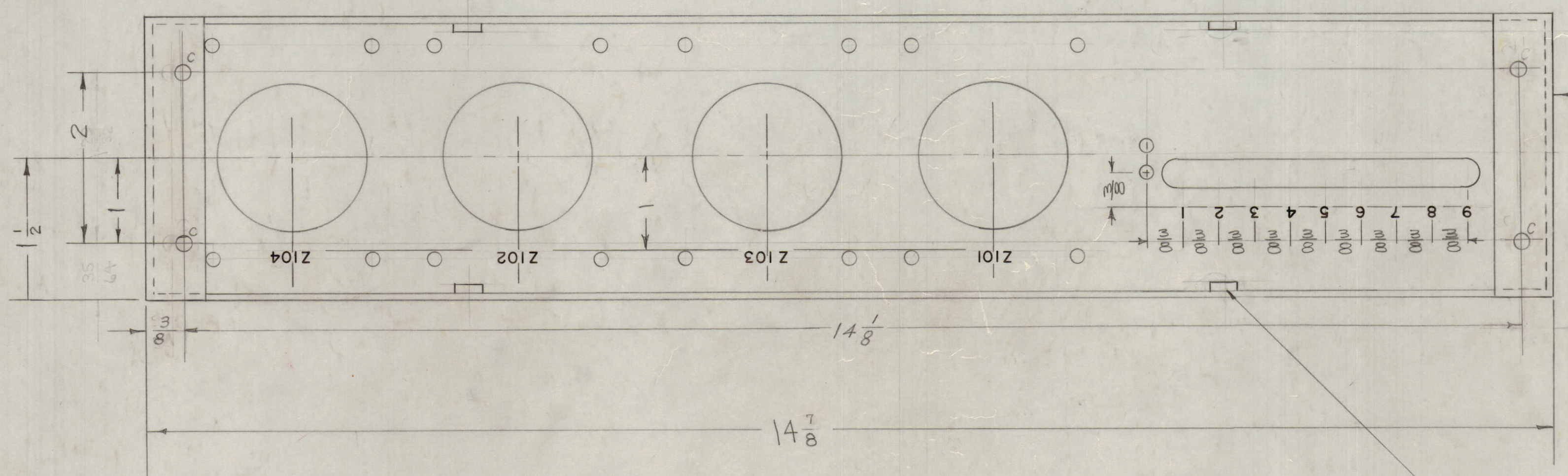
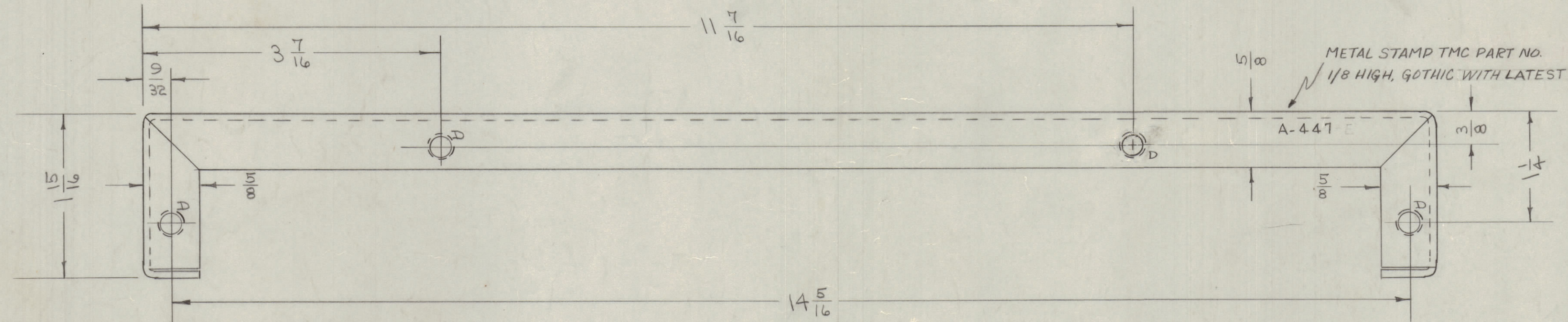
IF IT IS FOUND DESIRABLE TO CHANGE ANY TOLERANCE OR OTHER DETAIL SPECIFIED ON THIS DRAWING NOTIFY THE PURCHASER PROMPTLY.  
 MAXIMUM ALLOWABLE TOLERANCES HAVE BEEN DETERMINED AND DEVIATIONS WILL BE CAUSE FOR REJECTION. REMOVE ALL BURRS AND SHARP EDGES



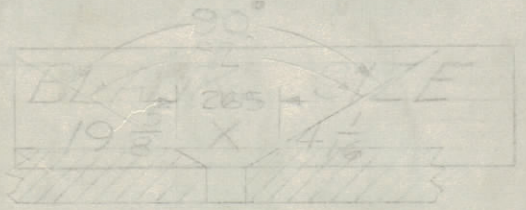
- A- 5/32 (.156) D. 4 HOLES REQ'D.
- B- 1/64 (.172) D. 16 HOLES REQ'D.
- C- 13/64 (.203) D. 4 HOLES REQ'D.
- D- .194-.191 DIA. 8 HOLES REQ'D. SEE DETAIL A
- E- 1/2 (1.500) D. 4 HOLES REQ'D.



STAMPING DETAIL - FRONT OF CHASSIS  
 LETTERS TO BE 1/8 HIGH BLACK GOTHIC



DETAIL A



DETAIL B

② MOUNT ITEM 2 IN ALL "D" HOLES AS SHOWN AFTER FINISHING.

NOTICE TO PERSONS RECEIVING THIS DRAWING

THE TECHNICAL MATERIEL CORPORATION claims proprietary right in the material disclosed hereon. This drawing is issued in confidence for engineering information only and may not be reproduced or used to manufacture anything shown hereon without permission from THE TECHNICAL MATERIEL CORPORATION to the user. This drawing is loaned for mutual assistance and is subject to recall at any time.

Property of:  
 THE TECHNICAL MATERIEL CORPORATION  
 MAMARONECK, NEW YORK

ISSUE ITEM	CHANGED FROM	DATE	CN. NO.	DRAFTS	CHECKER	ENG. APP.
G 1	WITH LATEST REVISION LETTER ADDED TO METAL STAMP NOTE	9/11/54	11567	A.M.	[Signature]	[Signature]
F 1	ADDED LETTERING INSIDE CHASSIS	8/23/54	11571	[Signature]	[Signature]	[Signature]
E 1	TEMPORARY SHOTS	10/8/54	11308	[Signature]	[Signature]	[Signature]
D 1	1/16" HOLES WERE 1/32" SINK	12/7/54	1021	AB	[Signature]	[Signature]
C 1	1/16" HOLES REDIMENSIONED	7/18/54	3	SC	[Signature]	[Signature]
B 2	ITEM 2 WAS SM-111 D 304	5/27/54	2	SC	[Signature]	[Signature]
A 1	C SINK DETAIL ADDED	4/12/54	1	[Signature]	[Signature]	[Signature]
TOLERANCES						
ALL OTHERS		DEC. DIM. ±		FRAC. DIM. ±		
		ANGULAR DIM. ±		DRILL, PUNCH, COMMERCIAL STOCK SIZES AND MANUFACTURERS TOLERANCES ARE NOT INCLUDED.		

SFP-2	121	A-448	A-20-53
MODEL	PROJECT NO.	ASSY. NO.	DATE
USED ON			

Q 2	NT-129-632-4	NUT, ROUND, SWAGE TYPE	
1 1	MS-346	CHASSIS (NO DRAWING)	
REQ. ITEM PART NO.		DESCRIPTION	SYMBOL
		.064	
STOCK SIZE		THE TECHNICAL MATERIEL CORP.	
ALUMINUM		MAMARONECK, NEW YORK	
MATERIAL WEIGHT PER PC.		CHASSIS ASSEMBLY	
528 H32		CDD A-20-53 A. J. J.	
TYPE & TEMPER		DRAWN ELEC. DES. APP. MECH. DES. APP.	
4		M.H.S.	
HEAT TREAT. SPEC.		CHECKED	
5404 1.8 DITZ		FINAL APPROVAL	
FINISH & SPEC. NO.		A-447 G	

A-447 G