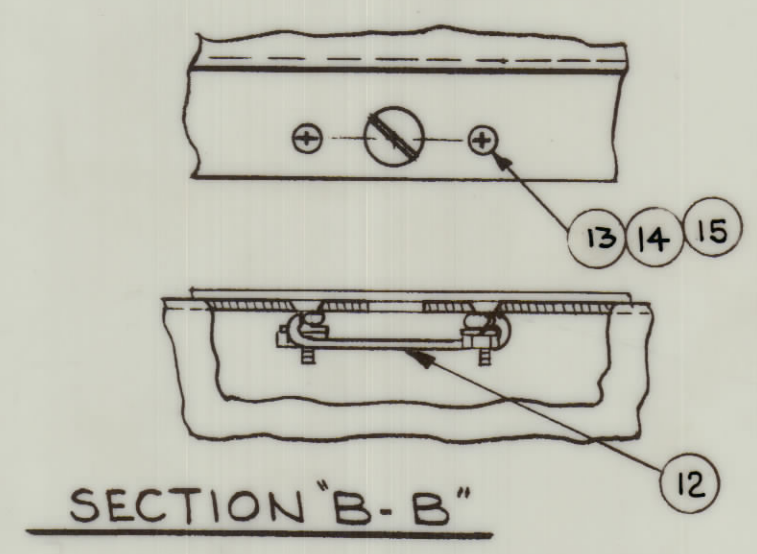
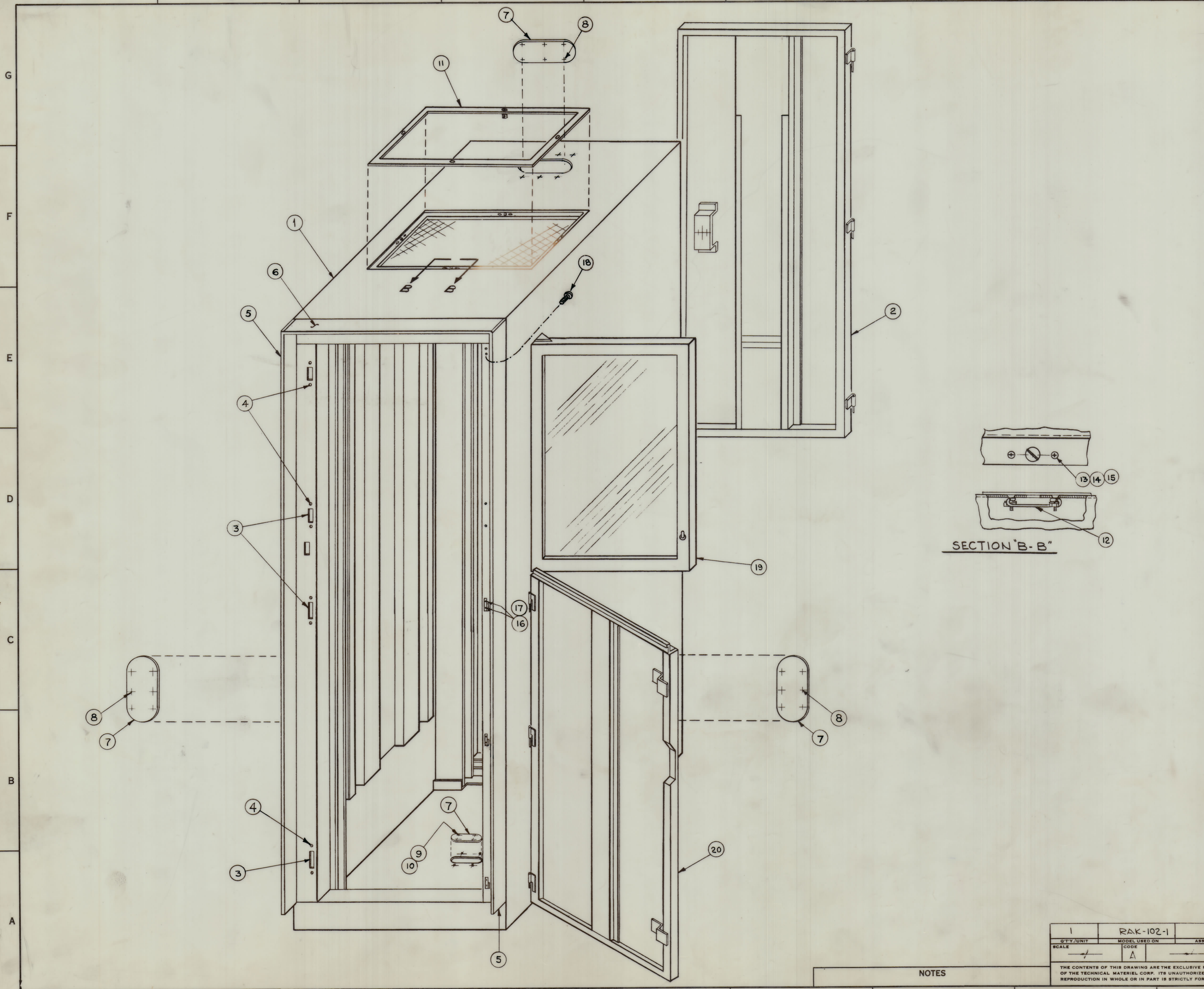


ZONE		SYM		DESCRIPTION	DATE	E.M.N. NO.	DRAFT	CHKD	APPD
X				EXPER. RELEASE	12.11.64	X			
				ORIGINAL RELEASE FOR PRODUCTION	12.14.64				



A3896	
Ø	

QTY	UNIT	PART NUMBER	DESCRIPTION
1	20	MS 3885	DOOR, LOWER, FRONT
1	19	A 3716	DOOR ASSEMBLY, WINDOW
4	18	SCBP0832BN6	SCREW, MACHINE
6	17	SCBP0632BN6	SCREW, MACHINE
3	16	HI 117-2	HINGE, FEMALE
8	15	SCFP0348BN6	SCREW, MACHINE
8	14	NTH0348BN6	NUT, PLAIN, HEX
8	13	LWS03MRN	WASHER, LOCK, SPLIT
4	12	FS102-1	LOCK SPRING
1	11	MS 3104	COVER, TOP
4	10	NTH1032BN12	NUT, PLAIN, HEX
4	9	FW10HBN	WASHER, FLAT
18	8	SCBP2520BN12	SCREW, MACHINE
4	7	MS 1850 S	PLATE, ACCESS
1	6	PM10B2-2	TRIM, TOP
2	5	PM10B2-1	TRIM, SIDE
8	4	SCFP0632BN6	SCREW, MACHINE
4	3	LK 105	LATCH, MAGNETIC
1	2	A 3717	DOOR ASSEMBLY, REAR
1	1	MS 3884	CABINET, ELEC. EQUIPMENT, BASIC

STURMER		LIST OF MATERIAL	
MATERIAL		THE TECHNICAL MATERIEL CORP. MAMARONECK, NEW YORK	
FINISH		TITLE CABINET, ELECTRICAL EQUIPMENT (83 HGT)	
UNLESS OTHERWISE SPECIFIED DIMENSIONS ARE IN INCHES AND INCLUDE CHEMICALLY APPLIED OR PLATED FINISHES		DRAWN G. S.	DATE 10-14-64
CHECKED A		DATE 10-14-64	DATE 10-15-64
ELECT. DES.		DATE 10-15-64	
MECH. DES.		DATE 10-15-64	
REV. LTR.		REV. LTR.	

1	RAK-102-1	ASBY. NO.
SCALE	CODE A	
THE CONTENTS OF THIS DRAWING ARE THE EXCLUSIVE PROPERTY OF THE TECHNICAL MATERIEL CORP. ITS UNAUTHORIZED USE OR REPRODUCTION IN WHOLE OR IN PART IS STRICTLY FORBIDDEN.		

NOTES