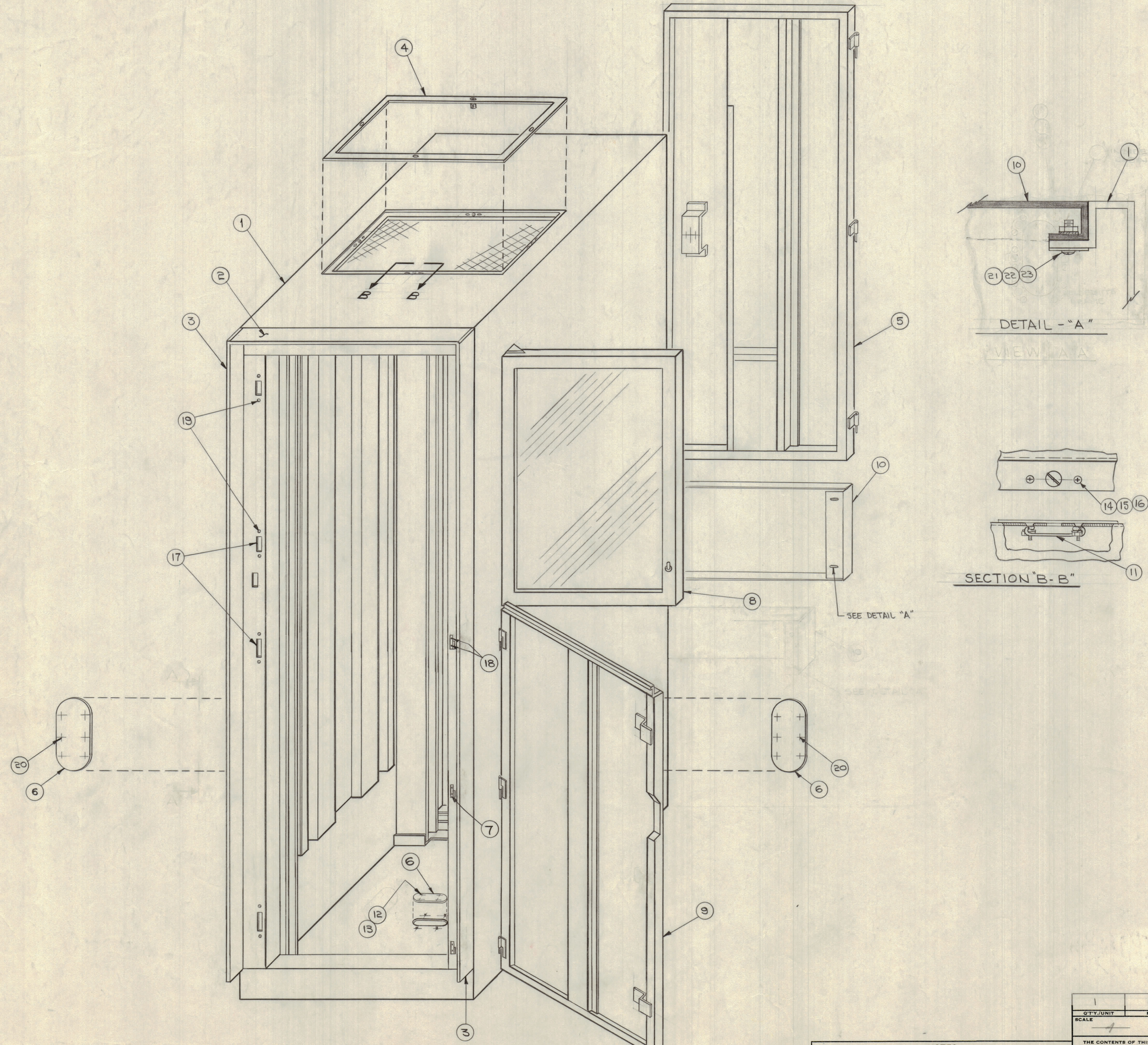


| REVISIONS | | | | | | | | | |
|-----------|-----|--|----------|------------|-------|------|------|--|--|
| ZONE | SYM | DESCRIPTION | DATE | E.M.N. NO. | DRAFT | CHKD | APPD | | |
| X | | EXPER. RELEASE | 7-31-64 | X | | | | | |
| X1 | | B/M ADDED; DETAIL "A" ADDED; SECTION "A-A" DELETED | 10-13-64 | X1 | | | | | |
| | | ORIGINAL RELEASE FOR PRODUCTION | 10-15-64 | | | | | | |



| REQ'D. | ITEM | PART NUMBER | DESCRIPTION | SYMBOL |
|--------|------|--------------|----------------------------|--------|
| 4 | 23 | SCBP0632BNG | SCREW, MACHINE | |
| 4 | 22 | NTH032BN8 | NUT, PLAIN, HEX. | |
| 4 | 21 | LWE06MRN | WASHER, LOCK, EXTERNAL | |
| 12 | 20 | SCBP2520BN12 | SCREW, MACHINE | |
| 8 | 19 | SCFP0632BNG | SCREW, MACHINE | |
| 6 | 18 | SCBP0632BN5 | SCREW, MACHINE | |
| 4 | 17 | LK105 | LATCH, MAGNETIC | |
| 8 | 16 | LW503MRN | WASHER, LOCK, SPLIT | |
| 8 | 15 | NTH0348BNG | NUT, PLAIN, HEX. | |
| 8 | 14 | SCFP0348BNG | SCREW, MACHINE | |
| 4 | 13 | FW104BN | WASHER, FLAT | |
| 4 | 12 | NTH1032BN12 | NUT, PLAIN, HEX | |
| 4 | 11 | FS102-1 | LOCKSPRING | |
| 1 | 10 | MS3923 | PANEL, REAR, BOTTOM | |
| 1 | 9 | MS4016 | DOOR, FRONT, BOTTOM | |
| 1 | 8 | A3829 | DOOR ASSY, WINDOW | |
| 3 | 7 | HI117-2 | HINGE, FEMALE | |
| 3 | 6 | MS18505 | PLATE, ACCESS | |
| 1 | 5 | MS3099-2 | DOOR, REAR | |
| 1 | 4 | MS3104 | COVER, TOP | |
| 2 | 3 | PM825-2 | TRIM, SIDE | |
| 1 | 2 | PM825-1 | TRIM, TOP | |
| 1 | 1 | MS3954 | CABINET, ELECTRICAL EQUIP. | |

| LIST OF MATERIAL | | | | | | | | | |
|------------------|--|---------------|--|-----------|---|---|--|----------------|--|
| MATERIAL | | | | | THE TECHNICAL MATERIEL CORP. MAMARONECK, NEW YORK | | | | |
| FINISH | | | | | TITLE | | | | |
| | | | | | CABINET, ELECTRICAL EQUIPMENT SINGLE RACK | | | | |
| QTY./UNIT | | MODEL USED ON | | ASSY. NO. | | UNLESS OTHERWISE SPECIFIED DIMENSIONS ARE IN INCHES AND INCLUDE CHEMICALLY APPLIED OR PLATED FINISHES | | DRAWN | |
| SCALE | | CODE | | | | DECIMALS: .X ± .08, .XX ± .01, .XXX ± .005 | | DATE: 7-31-64 | |
| | | A | | | | FRACTIONS: 1/4, 3/8, 1/2, 5/8, 3/4, 7/8 | | DATE: 10-13-64 | |
| | | | | | | TOLERANCES: ANGLES ± 0° 30' | | DATE: 10-15-64 | |
| | | | | | | | | REV. LTR. | |

NOTES

A3763