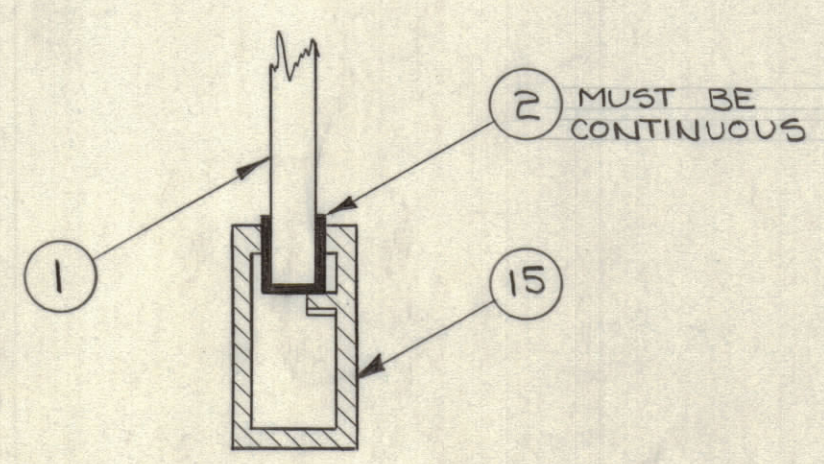
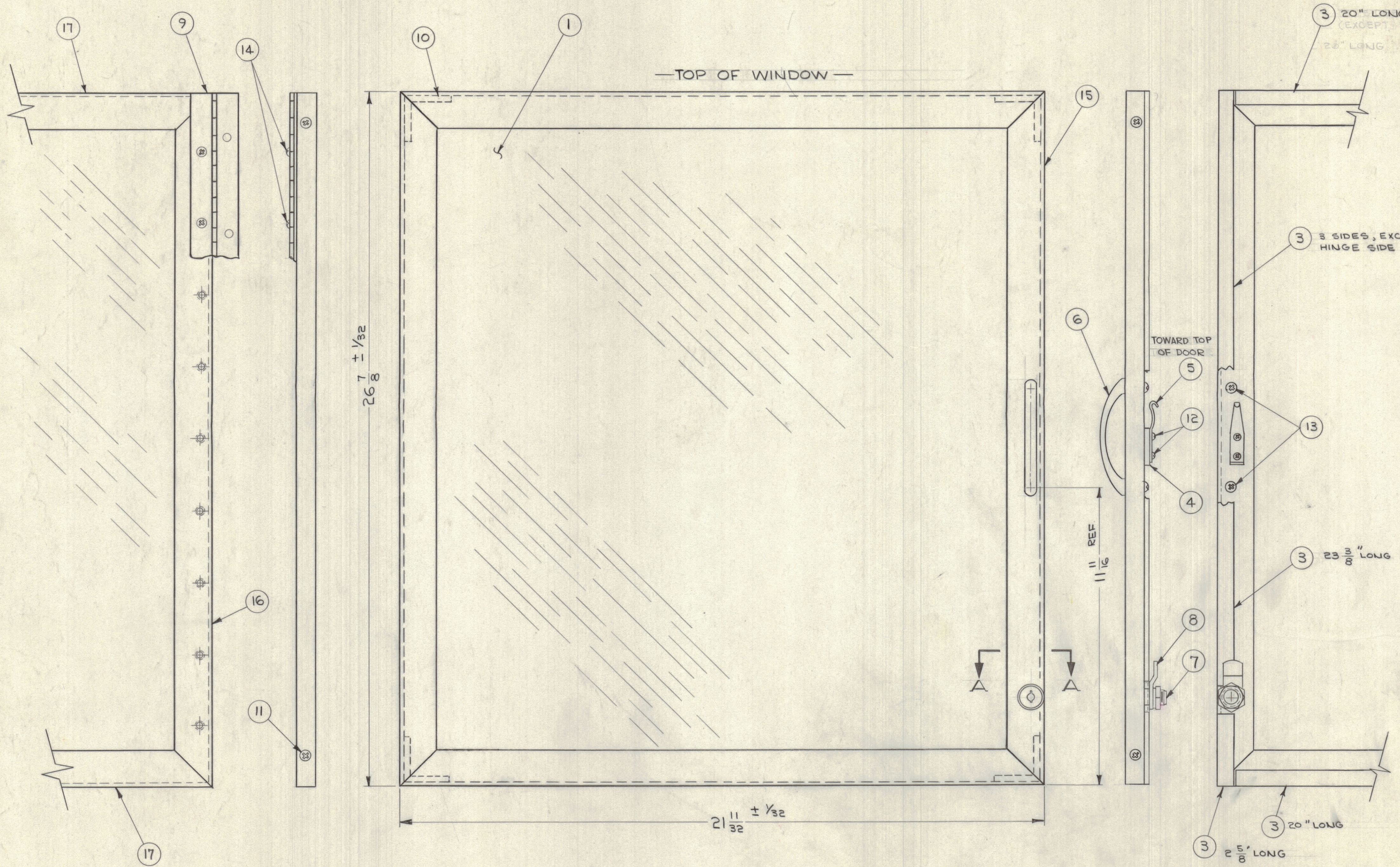


ZONE		BYM	DESCRIPTION	DATE	E.M.N. NO.	DRAFT	CHKD	APPD
X			EXPER. RELEASE	5-30-64	X	SP		
O			ORIGINAL RELEASE FOR PRODUCTION	5-28-64	O	AM	@	TK



NOTES:
 1- ASSEMBLY MUST BE FLAT AND SQUARE WITHIN $\pm 1/32$.
 2- ALL (4) MITERED CORNERS MUST BE TIGHT FIT (NO GAPS).

REQ'D.	ITEM	PART NUMBER	DESCRIPTION	SYMBOL
2	17	PM 829	FRAME, WINDOW, TOP & BOTTOM	
1	16	PM 828	FRAME, WINDOW, HINGE SIDE	
1	15	PM 830-2	FRAME, WINDOW, HANDLE SIDE	
9	14	SCBP0632BN4	SCREW, MACHINE	
2	13	SCBP0832BN12	SCREW, MACHINE	
2	12	SCBP0632BN6	SCREW, MACHINE	
8	11	SCFP1032SN6	SCREW, MACHINE	
4	10	PM 826	BRACE, ANGLE, CORNER	
1	9	HI 114	HINGE, WINDOW	
1	8	PM 824	CAM, LOCK	
1	7	LK 103	LOCK, DISC TUMBLER	
1	6	HA 120	HANDLE	
1	5	LK 101-2	STRIKE	
1	4	PM 827	SPACER, BAR	
66"	3	TA 111-2-4-66.00 A	TAPE, URETHANE	
1	2	RY 151-89.00	CHANNEL " U " RUBBER	
1	1	GS 100	GLASS, SAFETY PLATE	

LIST OF MATERIAL			
MATERIAL		THE TECHNICAL MATERIEL CORP. MAMARONECK, NEW YORK	
FINISH		TITLE WINDOW & FRAME ASSEMBLY (LEFT SIDE)	
UNLESS OTHERWISE SPECIFIED DIMENSIONS ARE IN INCHES AND INCLUDE CHEMICALLY APPLIED OR PLATED FINISHES		DRAWN	DATE
DECIMALS .X ± .05 .XX ± .01 .XXX ± .005		CHECKED	DATE
FRACTIONS ± 1/64 ANGLES ± 0° 30'		ELECT. DES.	DATE
TOLERANCES		MECH. DES.	DATE
		DATE	SHEET

1	RAK-22	A 3594
1	RAK-21	
SCALE	CODE	ASBY. NO.
	A	

NOTES

A 3590

APR 16 1964