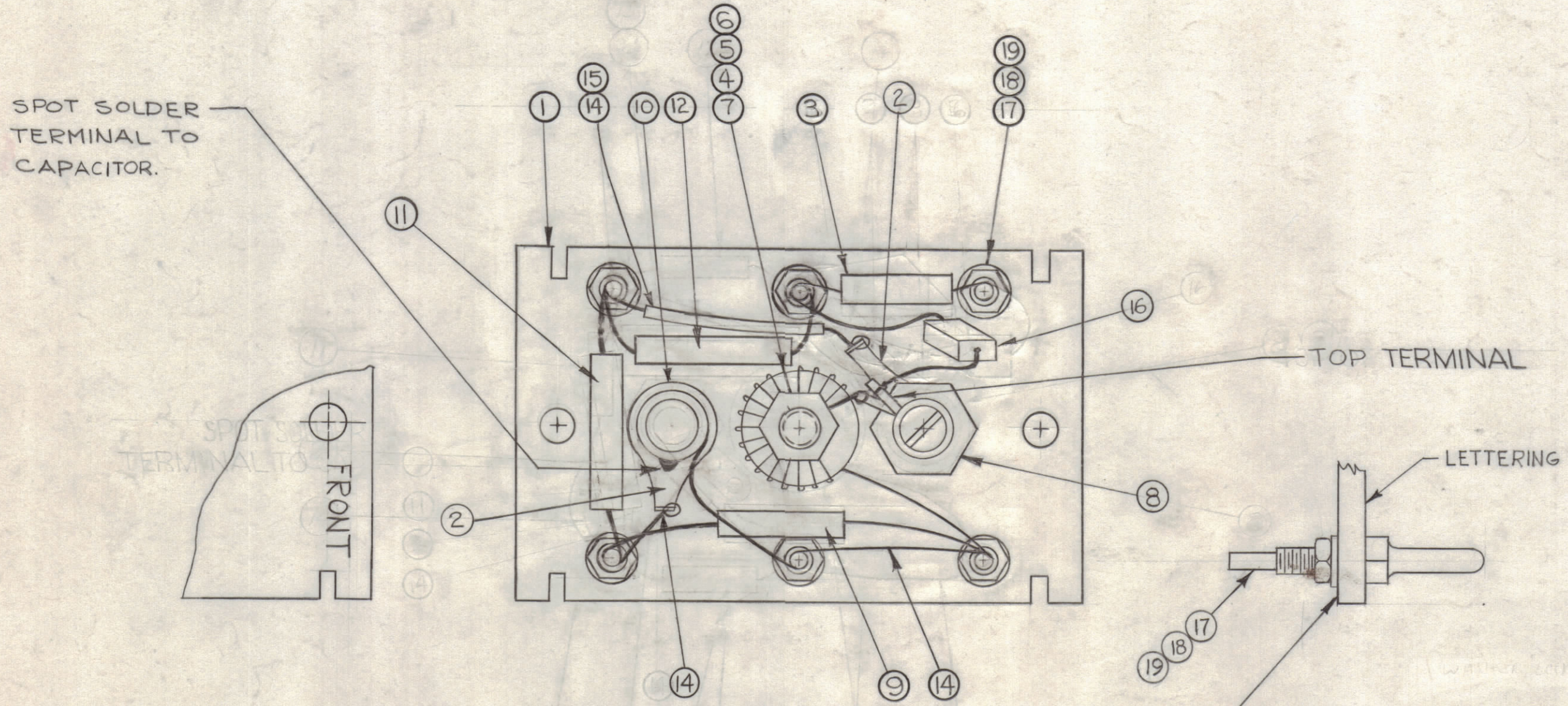


NOTICE TO PERSONS RECEIVING THIS DRAWING

THE TECHNICAL MATERIEL CORPORATION claims proprietary right in the material disclosed hereon. This drawing is issued in confidence for engineering information only and may not be reproduced or used to manufacture anything shown hereon without permission from THE TECHNICAL MATERIEL CORPORATION to the user. This drawing is loaned for mutual assistance and is subject to recall at any time.

Property of:
THE TECHNICAL MATERIEL CORPORATION
MAMARONECK, NEW YORK



COMPONENTS TO BE ASSEMBLED ON REAR OF BOARD, OPPOSITE SIDE OF LETTERING (SEE LD 1467)

| | | | | |
|---|----|------------------|---------------------------------|-------|
| 6 | 19 | NTH0440BNG | NUT, HEXAGON | |
| 6 | 18 | LWS04MRN | WASHER, LOCK, SPRING TYPE | |
| 6 | 17 | TE 191-1 | TERMINAL | |
| 1 | 16 | CM20F821G03 | CAPACITOR, 820MMF | C1070 |
| X | 15 | PX 104-1-034 | INSULATION, SLEEVING #20 | |
| X | 14 | WL 100-6 | WIRE, BUSS #20 AWG | |
| X | 13 | BS 100 | SOLDER, SOFT | |
| 1 | 12 | CM 100-10 | CAPACITOR, 1500MMF | C1071 |
| 1 | 11 | CM 15F471G03 | CAPACITOR, 470MMF | C1072 |
| 1 | 10 | CV 108-3 | CAPACITOR, VARIABLE .9-18 | C1073 |
| 1 | 9 | CM 15F 201G 03 | CAPACITOR, 200MMF | C1074 |
| 1 | 8 | AC 168 | COIL, R.F. TUNED | L1021 |
| 1 | 7 | CL-331 | COIL, R.F. ASSEMBLY | L1022 |
| 1 | 6 | FW 101-1 | WASHER, FLAT, NYLON | |
| 1 | 5 | NT 137-0632 | NUT, NYLON | |
| 1 | 4 | SC 143-0632-B-10 | SCREW, NYLON | |
| 1 | 3 | CM15C470J03 | CAPACITOR, 47MMF | C1075 |
| 2 | 2 | TE 104-4 | LUG, GROUND | |
| 1 | 1 | LD 1467 / PX 650 | TERMINAL BOARD, OSC. (LETTERED) | |

| | | | |
|--|----------|-------------|--------|
| REQ. ITEM | PART NO. | DESCRIPTION | SYMBOL |
| ANGER | | | |
| THE TECHNICAL MATERIEL CORP. MAMARONECK, NEW YORK | | | |
| STOCK SIZE | | | |
| AX-483 ASS'Y (TERMINAL BOARD, OSC. BAND #2) | | | |
| MATERIAL | | | |
| G.D.L. @ R.P. | | | |
| TYPE & TEMPER | | | |
| HEAT TREAT. SPEC. | | | |
| FINISH & SPEC. NO. | | | |
| ELEC. DES. APP. | | | |
| MECH. DES. APP. | | | |
| SHEET OF | | | |
| A 3494 B | | | |

| | | | | | | |
|--------------------------------|--|--|-------|---------------|--------|---------|
| B | ON ITEMS 3, 9 & 16 03 ADDED. ITEM 15 WAS PX104-1-034, ITEM 11 WAS CM20F471G | 2-27-67 | 17841 | G.D.L. | | |
| A | IT. 10 P/N WAS CV110-3 | 1-22-65 | 13337 | of | | |
| Ø | ORIGINAL RELEASE FOR PRODUCTION | 8-13-64 | | Belus | | |
| X | EXPERIMENTAL RELEASE | 3/25/64 | | Belus | | |
| SYM | ZONE | DESCRIPTION | DATE | CH. NO. | DRAFTS | CHECKER |
| UNLESS OTHERWISE SPECIFIED: | | SCALE 2:1 | | | | |
| DIMENSIONS ARE IN INCHES | | MAXIMUM ALLOWABLE TOLERANCES HAVE BEEN DETERMINED AND ANY DEVIATIONS WILL BE CAUSE FOR REJECTION. REMOVE ALL BURRS & SHARP EDGES | | | | |
| TOLERANCES ON FRACTIONS ± 1/64 | | DECIMALS ± .005 | | ANGLES ± 1/2° | | |

| | | | | | |
|---------------|--------|---------|------------|---------|---------|
| 1 | HFR-2 | | | | |
| 1 | HFR-1A | | | 2-25-64 | |
| REQ. PER UNIT | MODEL | SECTION | ASS'Y. NO. | DATE | USED ON |