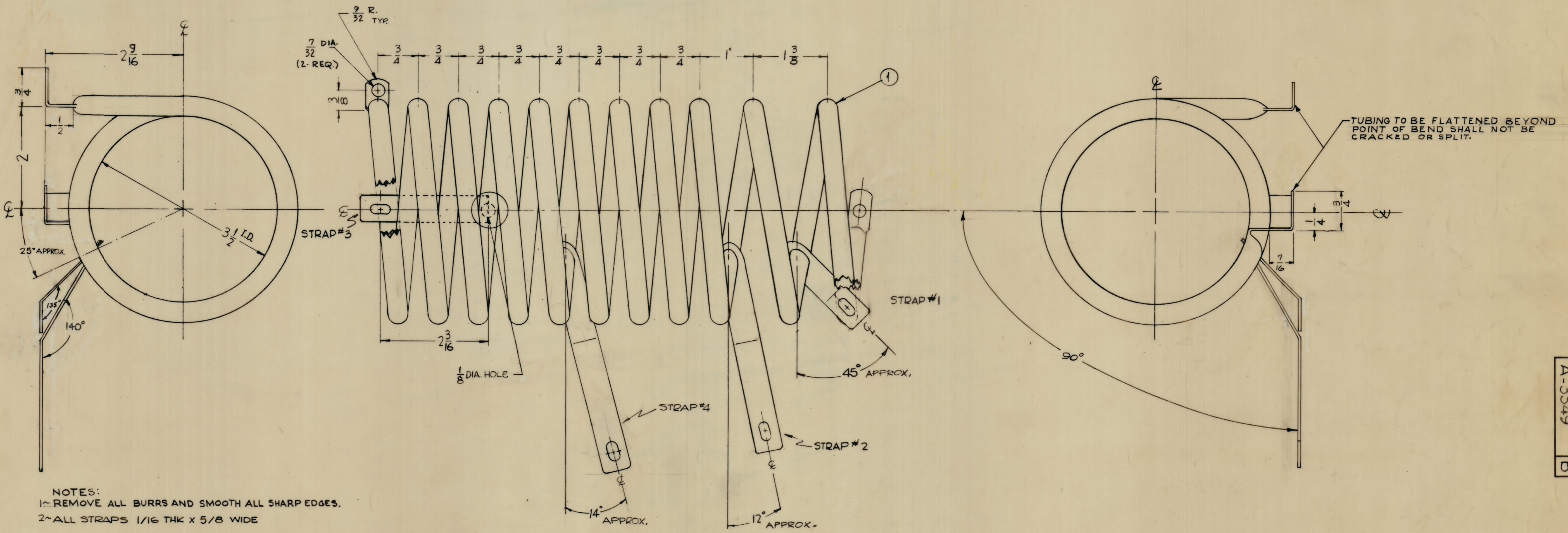


NOTICE TO PERSONS RECEIVING THIS DRAWING

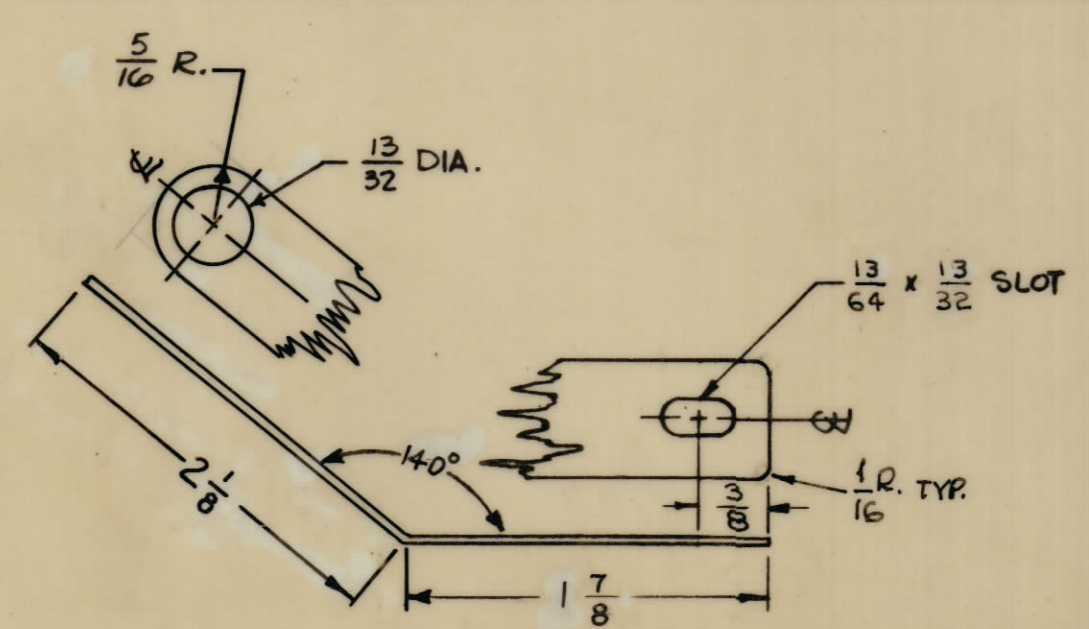
THE TECHNICAL MATERIEL CORPORATION claims proprietary right in the material disclosed herein. This drawing is issued in confidence for engineering information only and may not be reproduced or used to manufacture any thing shown hereon without permission from THE TECHNICAL MATERIEL CORPORATION to the user. This drawing is loaned for mutual assistance and is subject to recall at any time.

Property of:
THE TECHNICAL MATERIEL CORPORATION
MAMARONECK, NEW YORK

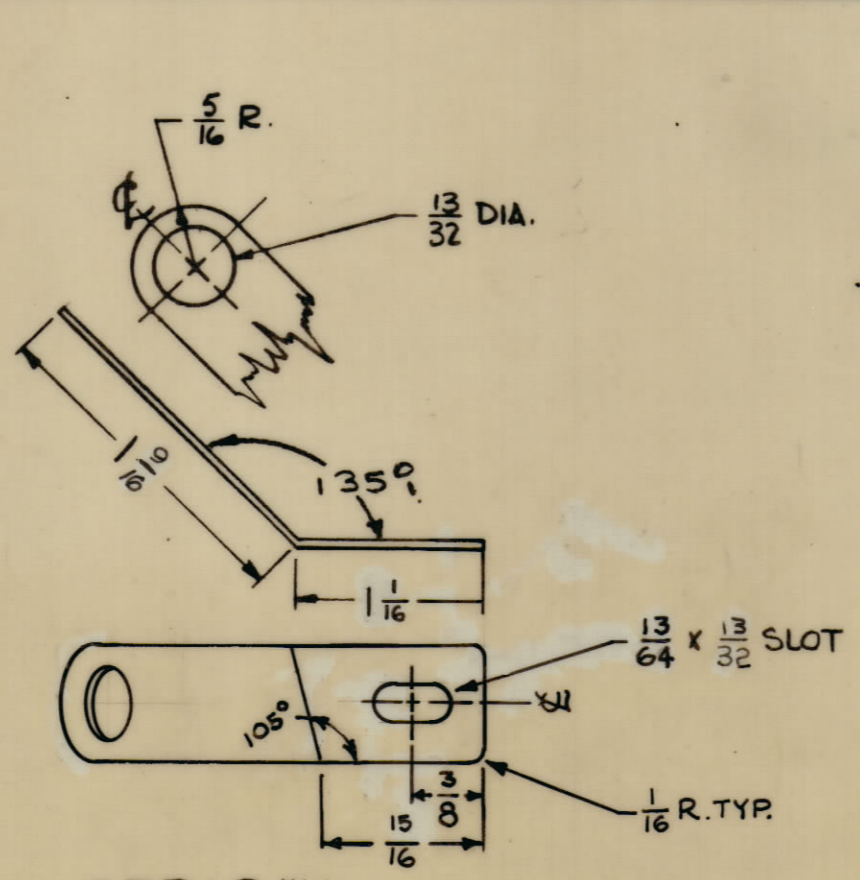
ZONE		SYM		DESCRIPTION	DATE	E.M.N. NO.	DRAFT	CHKD	APPD
O				ORIGINAL RELEASE FOR PRODUCTION	3-3-64	0	A.M.		
A10	A			STRAP #2 1 1/8 WAS 2. ALL SLOTS WERE 15/64 X 13/32. STRAP #1 REVISED COMPLETELY. 90° DIM & BENDING NOTE ADDED. STRAP #2 & #4 WERE 150° STRAP #1 ALIGNED WITH OTHER STRAPS ON SIDE VIEWS.	3/25/64	11412	A.M.		
D2	B			ADDED ITEM 1	3-2-67	17879	W.A.		



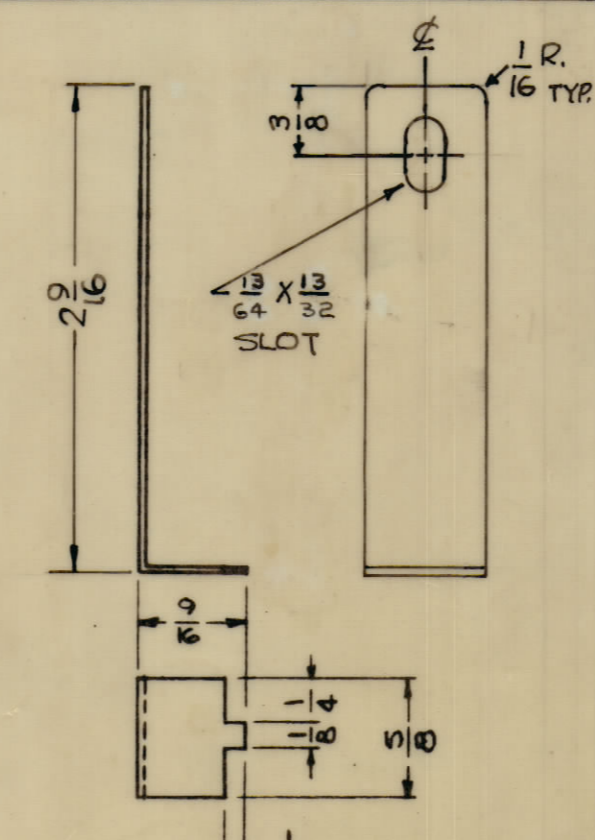
NOTES:
1- REMOVE ALL BURRS AND SMOOTH ALL SHARP EDGES.
2- ALL STRAPS 1/16 THK X 5/8 WIDE



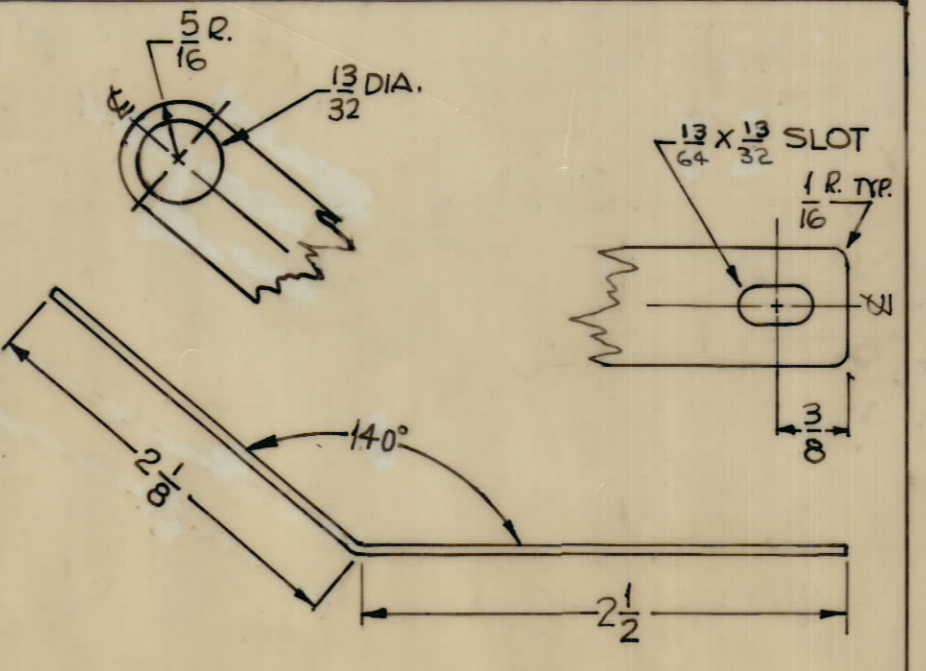
STRAP #2 (1-REQ)



STRAP #1 (1-REQ)



STRAP #3 (1-REQ)



STRAP #4 (1-REQ)

REQ'D	ITEM	PART NUMBER	DESCRIPTION	SYMBOL
1	TU 100-65		TUBING, COPPER	

LIST OF MATERIAL	
MATERIAL	3/8 O.D. COPPER TUBING
FINISH	S-245 SILVER PLATE
TYPE & TEMPER	COMM. SOFT

THE TECHNICAL MATERIEL CORP.	
MAMARONECK, NEW YORK	
TITLE: CL-324 ASSEMBLY	
SCALE: #	MODEL USED ON: GPT-40K(14) CL-324
CODE: A	SECTION: AS-125
ASBY. NO.	

DECIMALS	FRACTIONS	TOLERANCES
± .05	± 1/64	
± .01	± 1/32	
± .005	± 1/64	

DRWN	CHECKED	FINAL APPROVAL
W.A.	W.A.	W.A.

ELEC. DES. APP.	MECH. DES. APP.	SHEET	OF
		A-3349	B

A-3349 B