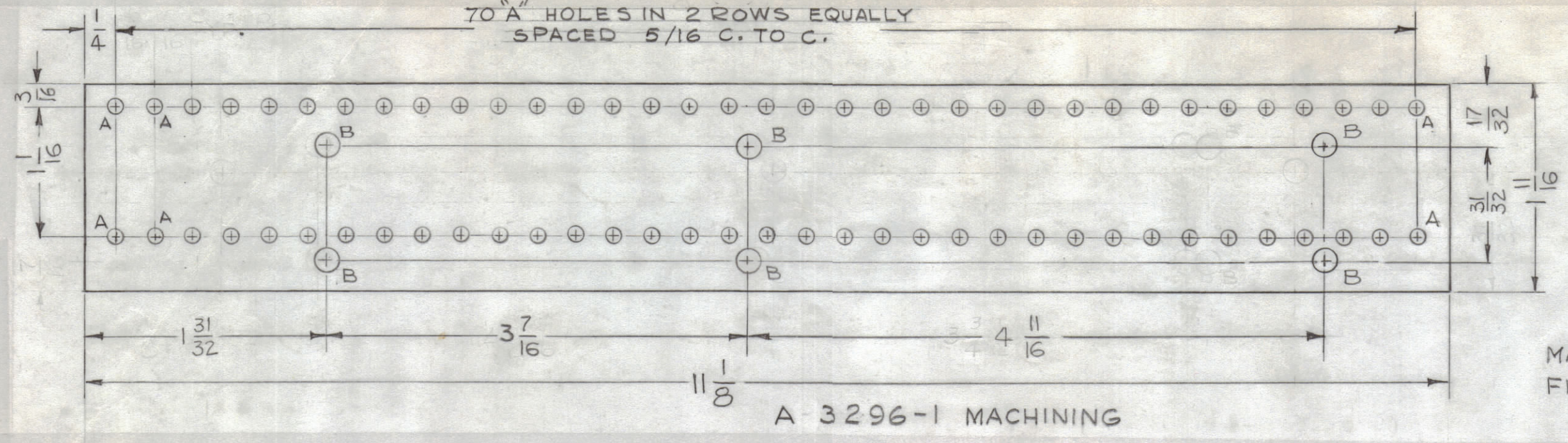


70 "A" HOLES IN 2 ROWS EQUALLY SPACED 5/16 C. TO C.



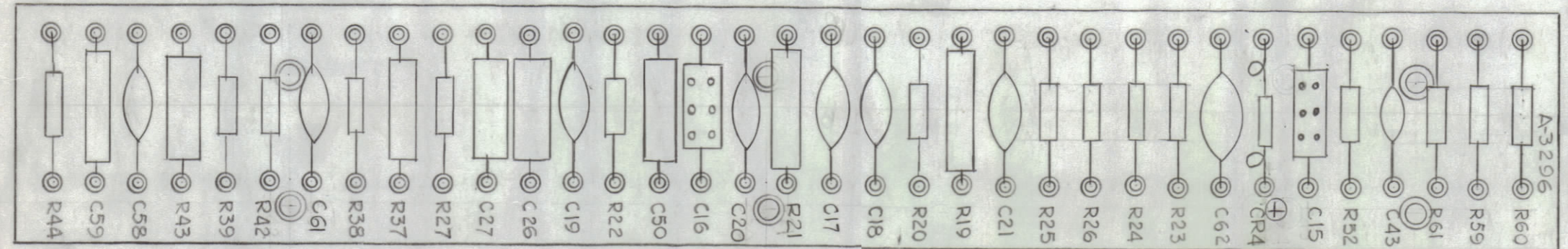
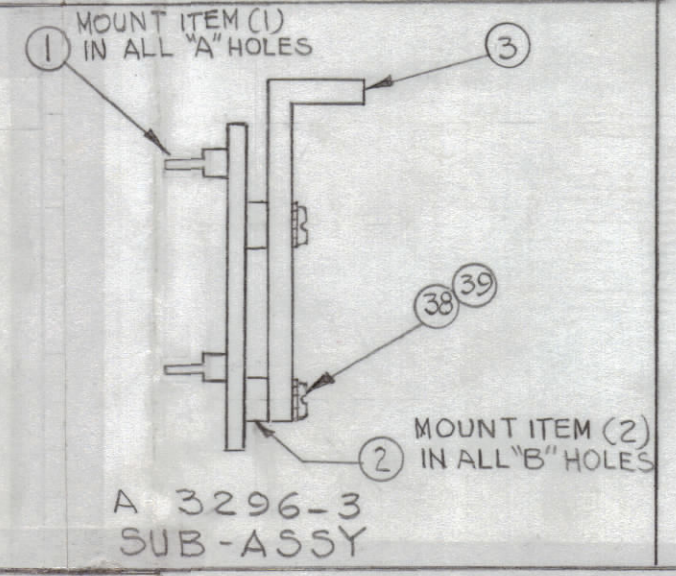
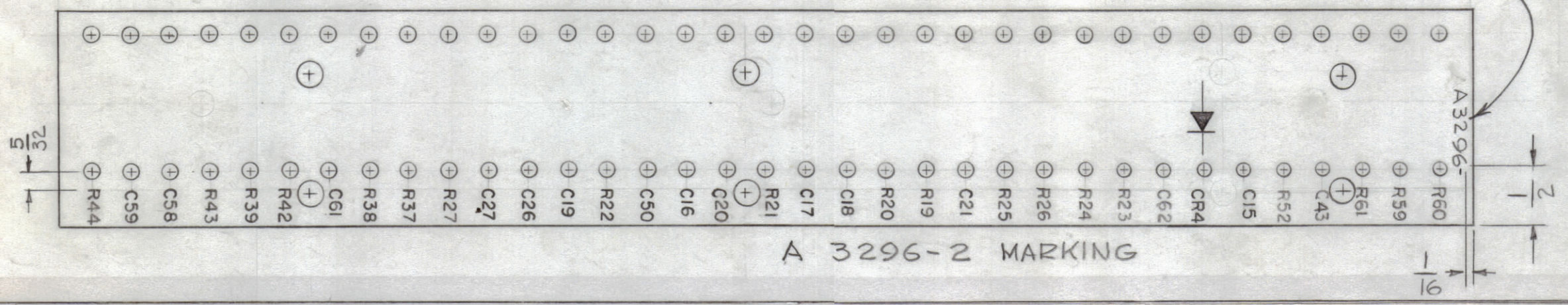
REVISIONS						
ZONE	SYM	DESCRIPTION	DATE	E.M.N. NO.	DRAFT	CHKD APPD
	A	ITEM #24 WAS CM20C200J, #25 WAS CM20C10N #38 WAS LWE06 MRN	3-2-64	10996	A.M.	JOB
	B	PIN TAILS & POLARITY SYM ON CR4 ADD.	6/14/65	14252	F	JOB
	C	ITEMS #24 WAS CM20C100J #25 WAS CM20C201J, #26 WAS CM20C107J #27 WAS CM30C242J, ITEMS #5 THRU #20 "J" WAS "K". ADD MARKING NOTE TO 181962	3-29-67	18047	L.A.K.	JOB

HOLE	DESCRIPTION	REQ.
A -	.116 DIA.	70
B -	.189 DIA.	6

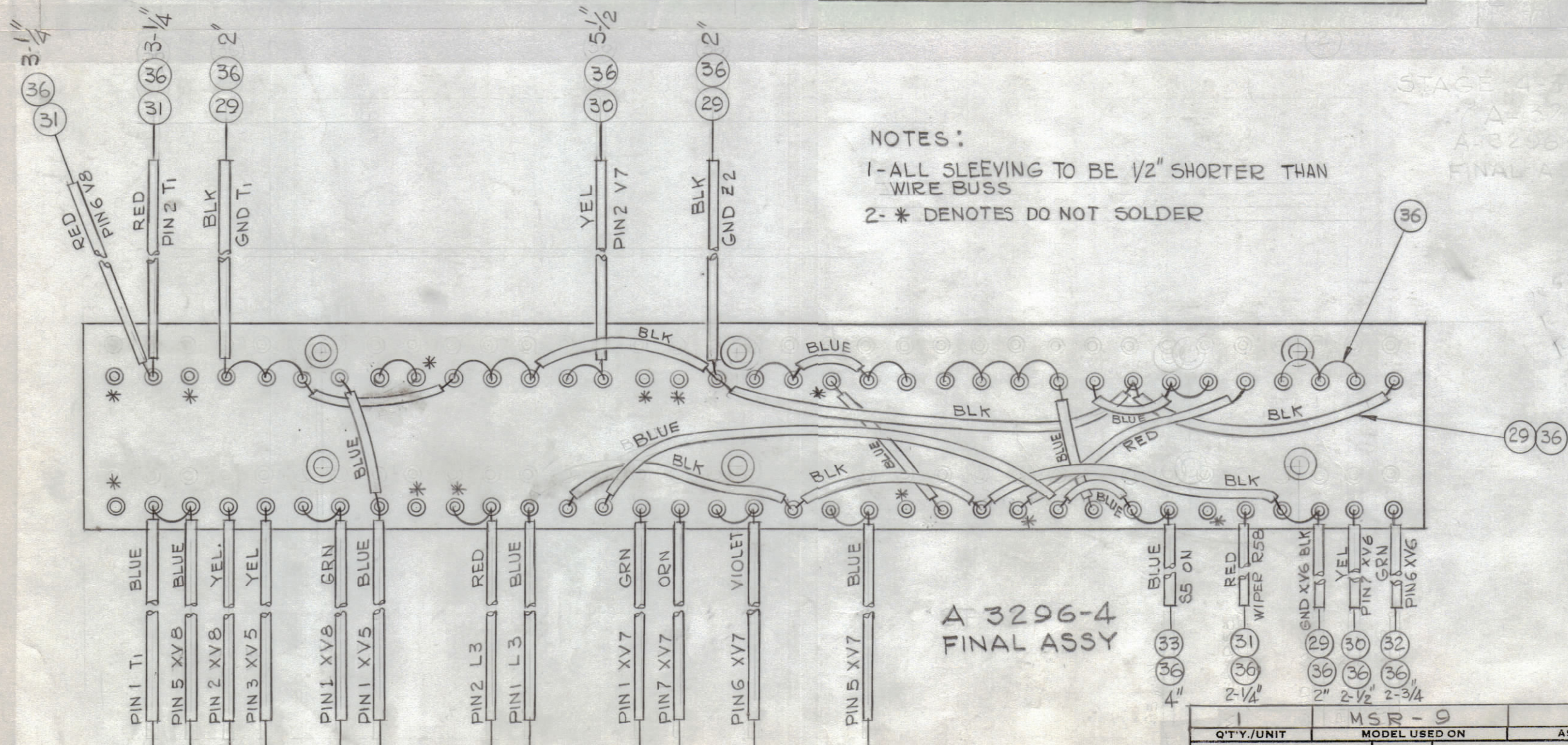
MATERIAL: 3/32 THK., XXXP PHENOLIC
FINISH: NATURAL

MARKING PROCESS: AS PER TMC SPECIFICATION S-727.
LETTERING: 3/32 HIGH BLACK GOTHIC, LOCATED AS SHOWN.

MARK TMC PT. NO. W/LATEST REV. LETTER.



NOTES:
1- ALL SLEEVING TO BE 1/2" SHORTER THAN WIRE BUSS
2- * DENOTES DO NOT SOLDER



REQ'D.	ITEM	PART NUMBER	DESCRIPTION	SYMBOL
6	39	SCBP0632BN6	SCREW, MACHINE	
6	38	LWE06 MRN	WASHER, LOCK, EXTERNAL	
X	37	BS-100	SOLDER, SOFT	
X	36	WL-100-7	WIRE, ELECTRICAL, BUSS SZ22	
1-1/2"	35	PX-104-9-.034	INSULATION SLEEVING	VIOLET
2"	34	PX-104-8-.034		ORN
17-5/8"	33	PX-104-6-.034		BLU
5-1/2"	32	PX-104-4-.034		GRN
8-3/4"	31	PX-104-3-.034		RED
11-3/4"	30	PX-104-2-.034		YEL
15-7/8"	29	PX-104-1-.034	INSULATION SLEEVING	BLK
1	28	CC21S1470K	CAPACITOR, FIXED CERAMIC	C50
2	27	CM30E242603	MICA	C27
1	26	CM20F102603	MICA	C59
1	25	CM15F 201603	MICA	C15
1	24	CM15B 100J03	MICA	C16
2	23	CC-100-37	CERAMIC DISC.	C58
6	22	CC-100-16	CERAMIC DISC.	
1	21	CC-100-15	CAPACITOR, FIXED CERAMIC DISC.	C43
1	20	RC42GF473J	RESISTOR, FIXED COMPOSITION	R21
1	19	RC42GF301J		R43
1	18	RC32GF123J		R37
1	17	RC32GF103J		R19
1	16	RC20GF474J		R42
3	15	104J		R20, R23, R24
1	14	823J		R25
1	13	683J		R26
1	12	563J		R52
2	11	333J		R60, R38
1	10	123J		R27
1	9	392J		R44
1	8	102J		R61
1	7	271J		R39
1	6	181J		R59
1	5	RC20GF121J	RESISTOR, FIXED COMPOSITION	R22
1	4	IN463	SEMICONDUCTOR, DEVICE, DIODE, SIL	CR4
3	3	MS-1321	BRACKET, TERMINAL BOARD, MTG.	
6	2	TE-108-7	SPACER, CLINCH	
70	1	TE-109-2	TERMINAL, LUG	

0. POSE		LIST OF MATERIAL	
MATERIAL		THE TECHNICAL MATERIEL CORP. MAMARONECK, NEW YORK	
FINISH		TITLE TERMINAL BOARD ASSY. PROD. DET.	
UNLESS OTHERWISE SPECIFIED DIMENSIONS ARE IN INCHES AND INCLUDE CHEMICALLY APPLIED OR PLATED FINISHES		DRAWN RAMIREZ	DATE 10-1-63
DECIMALS .X ± .05 .XX ± .01 .XXX ± .005		CHECKED JLO	DATE 12-17-63
FRACTIONS ± 1/64 ANGLES ± 0° 30'		ELECT. DES. M	DATE 12-2-63
TOLERANCES		MECH. DES. M	DATE 12-2-63
THE CONTENTS OF THIS DRAWING ARE THE EXCLUSIVE PROPERTY OF THE TECHNICAL MATERIEL CORP. ITS UNAUTHORIZED USE OR REPRODUCTION IN WHOLE OR IN PART IS STRICTLY FORBIDDEN.		FINAL APPROVAL BP	
SCALE 1:1		DATE 12-2-63	
MODEL USED ON A		DATE 12-2-63	
ASSY. NO. MSR-9		DATE 12-2-63	
QTY./UNIT		DATE 12-2-63	
CODE		DATE 12-2-63	
A		DATE 12-2-63	
A 3296		DATE 12-2-63	
C		DATE 12-2-63	