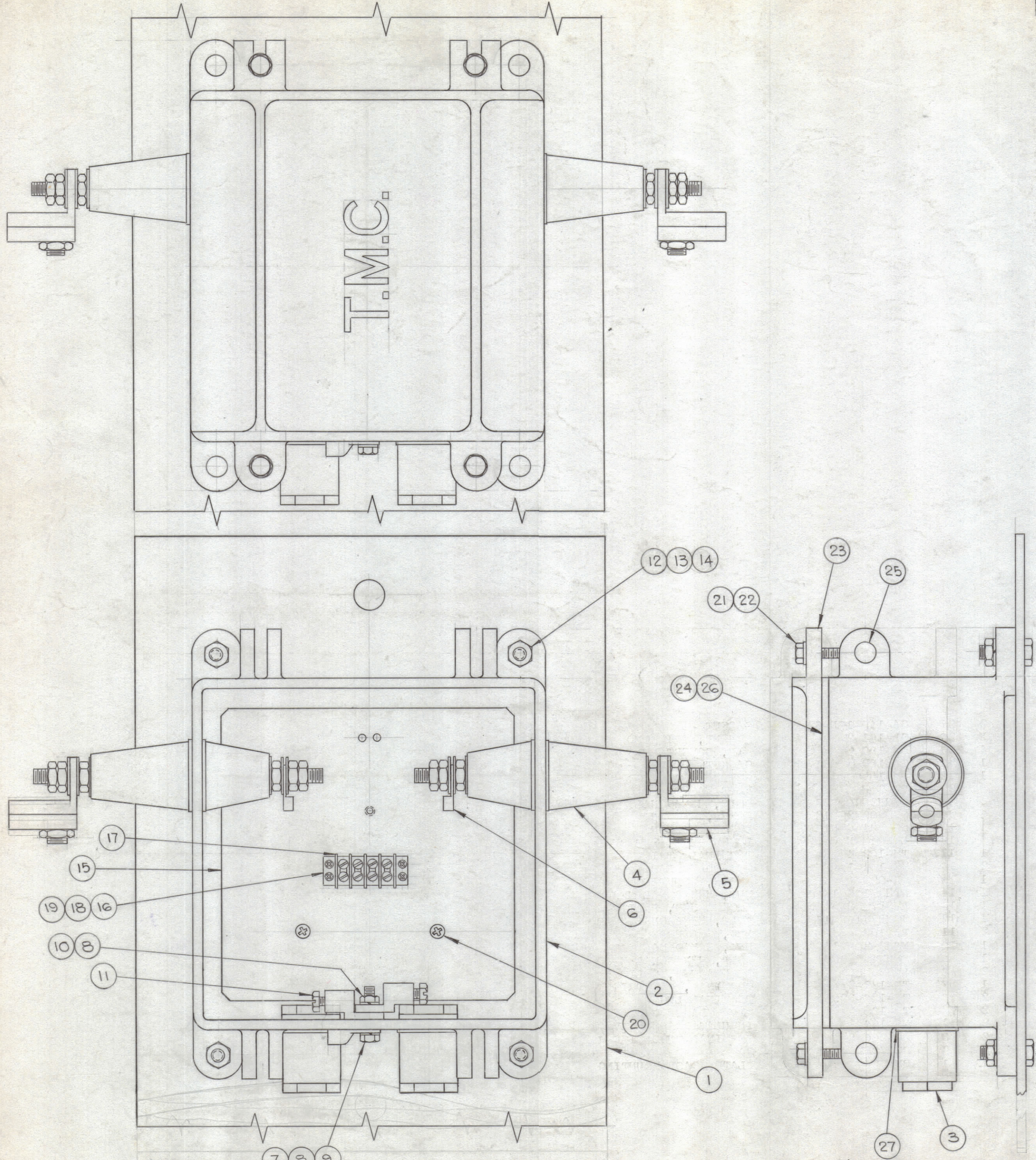


REVISIONS					
ZONE	SYM	DESCRIPTION	DATE	E.M.N. NO.	APPD



~NOTE~
COVER REMOVED TO SHOW INTERIOR ASSY OF CASE

NOTES

ATA-2		
Q'TY/UNIT	MODEL USED ON	ASS'Y. NO.
SCALE	CODE	
THE CONTENTS OF THIS DRAWING ARE THE EXCLUSIVE PROPERTY OF THE TECHNICAL MATERIEL CORP. ITS UNAUTHORIZED USE OR REPRODUCTION IN WHOLE OR IN PART IS STRICTLY FORBIDDEN.		

REQ'D.	ITEM	PART NUMBER	DESCRIPTION	SYMBOL
2	27	GA-140-16N-6	GASKET	
X	26	GL-101-2	CEMENT, PLIOBOND	
4	25	PM-100	PIN, COVER	
1	24	GA-103	GASKET, COVER	
1	23	PM-105	COVER	
4	22	FW-25HSS	FLAT WASHER	
4	21	SCHH2520SS28	BOLT, HEXAGONAL HEAD	
4	20	SCBP0832SS13	SCREW, MACHINE	
4	19	SCBP0440EN10	SCREW, MACHINE	
4	18	LWE04MRN	LOCKWASHER, EXTERNAL	
1	17	TM-102-4	TERMINAL STRIP	
2	16	MS-154-1	STRADDLE PLATE	
1	15	PX-603	PLATE, MOUNTING	
4	14	NTH3716SS16	NUT, HEXAGONAL HEAD	
4	13	LWS37MSS	LOCKWASHER, SPLIT	
4	12	SCHH3716SS16	BOLT, HEXAGONAL HEAD	
2	11	TE-106	LUG, SOLDERLESS	
1	10	NTH2520SS14	NUT, HEXAGONAL	
1	9	SCHH2520SS24	BOLT, HEXAGONAL HEAD	
2	8	LWS25MSS	LOCKWASHER, SPLIT	
1	7	TE-178-2	TERMINAL, ELECTRIC	
2	6	TE-156-32955	TERMINAL LUG	
2	5	TE-185	WIRE CLAMP	
2	4	NS-130	INSULATOR ASSEMBLY	
2	3	PO-206-8	TERMINAL TUBE, SIZE J	
1	2	PM-685	CASE	
1	1	PM-684	PLATE, CASE MOUNTING	

R. HAY			
LIST OF MATERIAL			
MATERIAL		THE TECHNICAL MATERIEL CORP. MAMARONECK, NEW YORK	
FINISH		TITLE FINAL ASSEMBLY MODEL ATA-2	
UNLESS OTHERWISE SPECIFIED DIMENSIONS ARE IN INCHES AND INCLUDE CHEMICALLY APPLIED OR PLATED FINISHES		DRAWN <i>Chinault</i> DATE 8-9-63 CHECKED <i>JLB</i> DATE 8/21/63 ELECT. DES. DATE MECH. DES. DATE	FINAL APPROVAL <i>BP</i> DATE A-3284 SHEET
DECIMALS .X ± .05 .XX ± .01 .XXX ± .005	FRACTIONS ± 1/64 ANGLES ± 0° 30'	TOLERANCES	REV. LTR. STOCK NO. 2463

A-3284