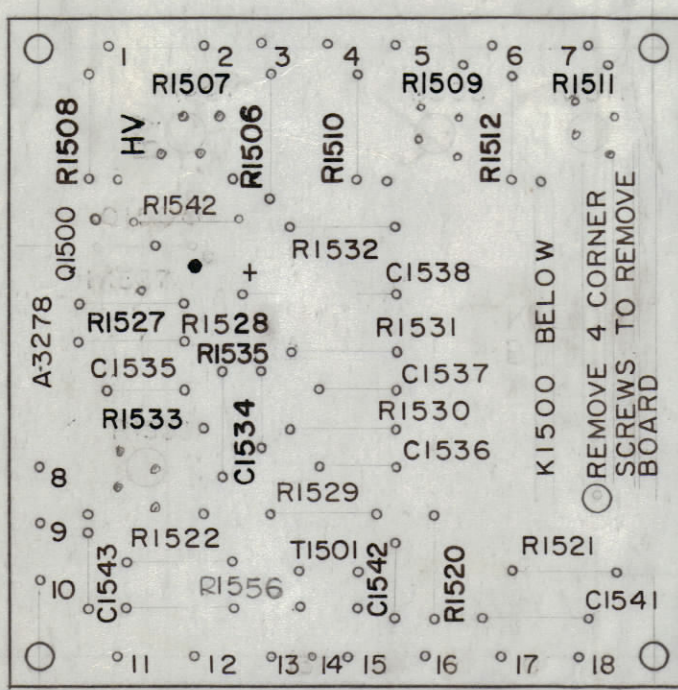
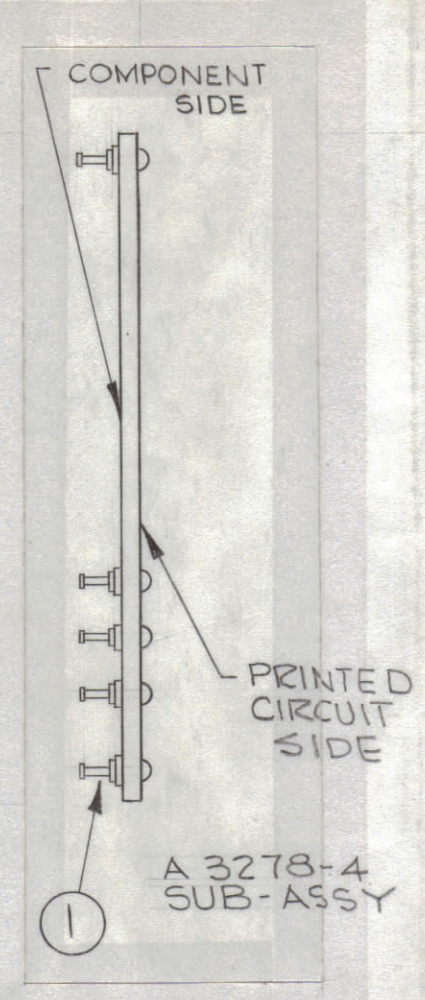


REVISIONS						
ZONE	SYM	DESCRIPTION	DATE	E.M.N. NO.	DRAFT	CHKD
C2	A	IT.20 DELE. IT.19 WAS IREQ. RC20GF 153J	5.7.64	11340	WFB	JCS
7H1	B	IT. 28,27,26,25,20 DELE, IT. 19 WAS IREQ, IT. 3,2 P/N REV, LETTERING REV.	5.22.64	11442	NP	@
G,C,7	C	R.1527 RELOCATED	8.12.64	11999	WFB	WFB
C3	D	IT.15 WAS IREQ & SYM R1521 ADD. IT. 36 IT.16 WAS IREQ & SYM R1521 DELE. ADDED * ADD. TO FINAL ASSY. * NOTE ADD. TO A3278-5	9.2.64	12298	WFB	WFB
C2	E	IT.13 WAS RC 20GF 222J, IT.31 ADD.	10.27.64	12719	WFB	WFB
	F	B/M: IT.30 WAS SCBP0632BN4; IT.34 WAS NTH0440BN8.	2.12.65	13300	WFB	WFB
	G	IT. 4 WAS RL156-3; IT. 8 WAS CM15B390K; IT. 9 WAS CM15B391K; U/O BLOCK ADDED & UPDATED.	3.15.65	13699	WFB	WFB
	H	CLERICAL CHANGE	3.30.65		WFB	WFB
	J	ITEM #9 WAS CM15F391J	6-9-65	14222	J.C.	J.C.



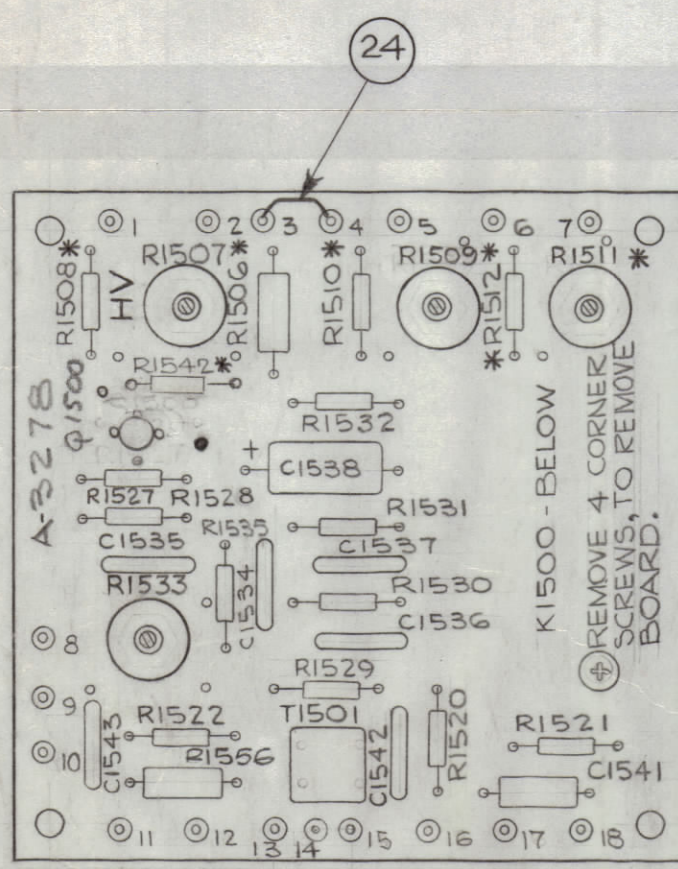
A 3278-3 LETTERING

UNLESS OTHERWISE SPECIFIED~
 1. ALL LETTERING TO BE 3/32 HIGH WHITE GOTHIC.
 2. MARKING PROCESS AS PER TMC SPEC. 5727 LOCATE APPROX. AS SHOWN

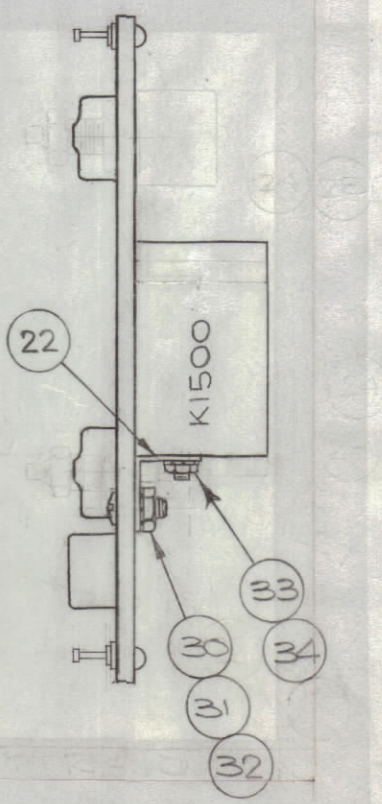


A 3278-4 SUB-ASSY

QTY	ITEM	PART NUMBER	DESCRIPTION	SYMBOL
2	37	RVIIIU254A	RESISTOR, VARIABLE, COMP.	R1509
1	36	PX829-1	PAD, TRANSISTOR	R1511
1	35	RC20GF105J	RESISTOR, FIXED, COMPOSITION	R1542
1	34	NTH0440BN6	NUT, HEX	
1	33	LWEO4MRN	WASHER, LOCK, EXT	
1	32	NTH0632BN8	NUT, HEX	
1	31	LWEO6MRN	WASHER, LOCK, EXT	
1	30	SCBP0632BN5	SCREW, MACHINE	
X	29	BS 100	SOLDER, SOFT	
	28			
	27			
	26			
	25			
0-01	24	WL100-8	WIRE, BUSS, SIZE 24	
2	23	CC100-33	CAPACITOR, FIXED, CERAMIC, DISC	
1	22	TE 200	BRACKET, ANGLE	
1	21	RC20GF 273 J	RESISTOR, FIXED, COMPOSITION	R1508
	20			
	19	RC20GF 102 J		R1506
1	18	RC32GF 100J		R1535
1	17	RC20GF 473 J		R1521, R1520
1	16	RC20GF 103J		R1527
2	15	RC20GF 680J		R1532
1	14	RC20GF 433J		R1542
1	13	RC20GF 182 J		R1556
4	12	RC20GF 472 J	RESISTOR, FIXED, COMPOSITION	C1541
1	11	CC100-15	CAPACITOR, FIXED, CERAMIC, DISC	
3	10	CC100-16	CAPACITOR, FIXED, CERAMIC, DISC	
1	9	RC20GF104J	RESISTOR, FIXED, COMP	R1500
1	8	CM15E390J	CAPACITOR, FIXED, MICA	C1538
1	7	2N1308	TRANSISTOR	T1501
1	6	CE105-50-15	CAPACITOR, FIXED, ELECTROLYTIC	K1500
1	5	TF 24G-6X	TRANSFORMER, AUDIO	
1	4	RL156-6	RELAY, ARMATURE	
1	3	RVIII B103A	RESISTOR, VARIABLE COMP.	
1	2	RVIII U503A	RESISTOR, VARIABLE COMP.	
18	1	TE 127-3	TERMINAL, STUD	

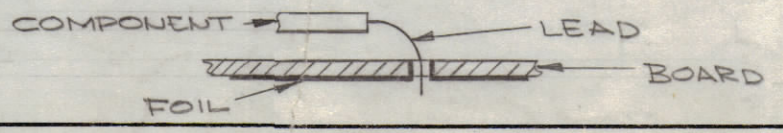


A3278-6 FINAL ASSY.



A 3278-5 ELECTRICAL ASSY. LESS COMP. MARKED *

ASSEMBLY NOTICE
 1. TO MOUNT COMPONENTS, INSERT LEAD THRU PLATED THRU HOLES AND BEND 1/16 OF LEAD OVER COPPER FOIL AS SHOWN
 2. APPLY HEAT AND SOLDER TO LEAD & FOIL.
 CAUTION: TOO MUCH HEAT WILL CAUSE FOIL TO SEPARATE FROM BOARD
 3. CLEAN & INSPECT AS PER 5676



NOTES

QTY/UNIT	PC BD. ASSY.	MODEL, U/O	ASSY. NO.
1	A3278-5	SME-1	A3770
1	A3278-5	STE-1	A3273
1	A3278-6	TTR-10	AX418

SEE CHART	SEE CHART	ASSY. NO.
QTY/UNIT	MODEL USED ON	
SCALE	CODE	
DO NOT SCALE	A	

THE CONTENTS OF THIS DRAWING ARE THE EXCLUSIVE PROPERTY OF THE TECHNICAL MATERIEL CORP. ITS UNAUTHORIZED USE OR REPRODUCTION IN WHOLE OR IN PART IS STRICTLY FORBIDDEN.

LIST OF MATERIAL			
MATERIAL		THE TECHNICAL MATERIEL CORP. MAMARONECK, NEW YORK	
FINISH		TITLE PRINTED CIRCUIT BOARD ASSY CW OSCILLATOR	
UNLESS OTHERWISE SPECIFIED DIMENSIONS ARE IN INCHES AND INCLUDE CHEMICALLY APPLIED OR PLATED FINISHES	DRAWN Ghanis	DATE 8/29/63	FINAL APPROVAL Koe
DECIMALS .X ± .05 .XX ± .01 .XXX ± .005	TOLERANCES ± 1/64 ANGLES ± 0° 30'	DATE 10/16/63	DATE 10/16/63
ELECT. DES. RON KOHN		SHEET 2 OF 2	
MECH. DES. RON KOHN		REV. LTR.	