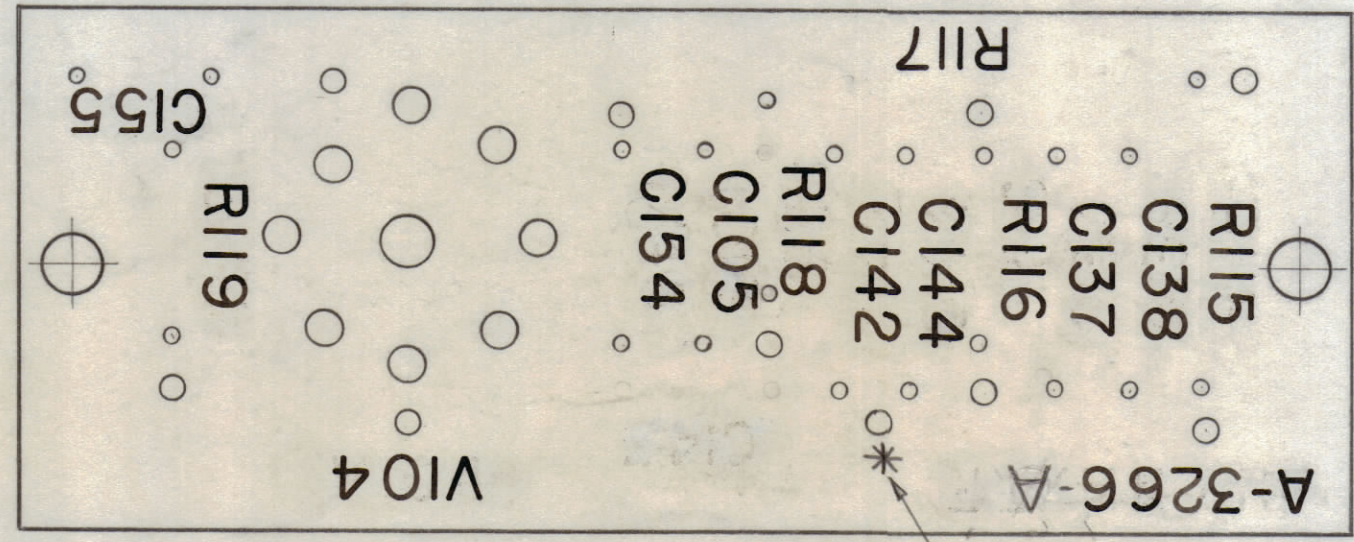
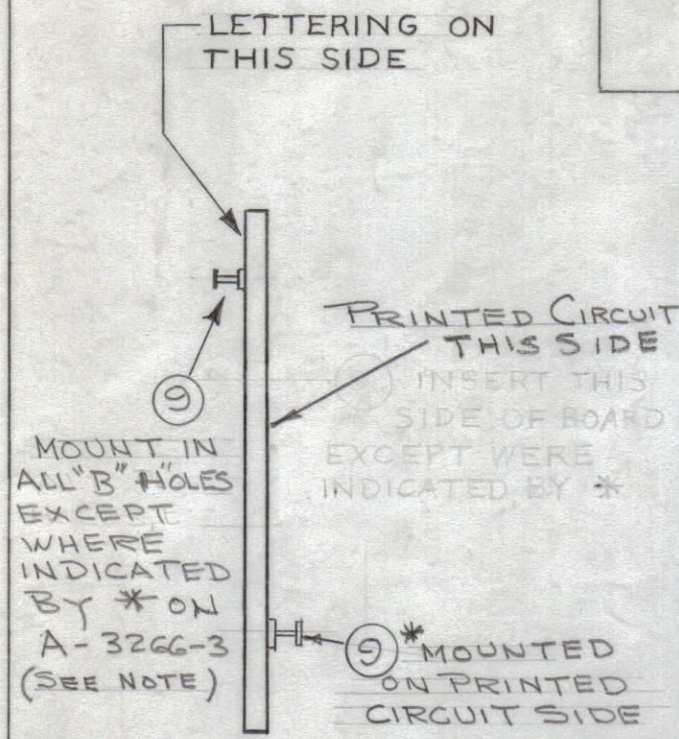


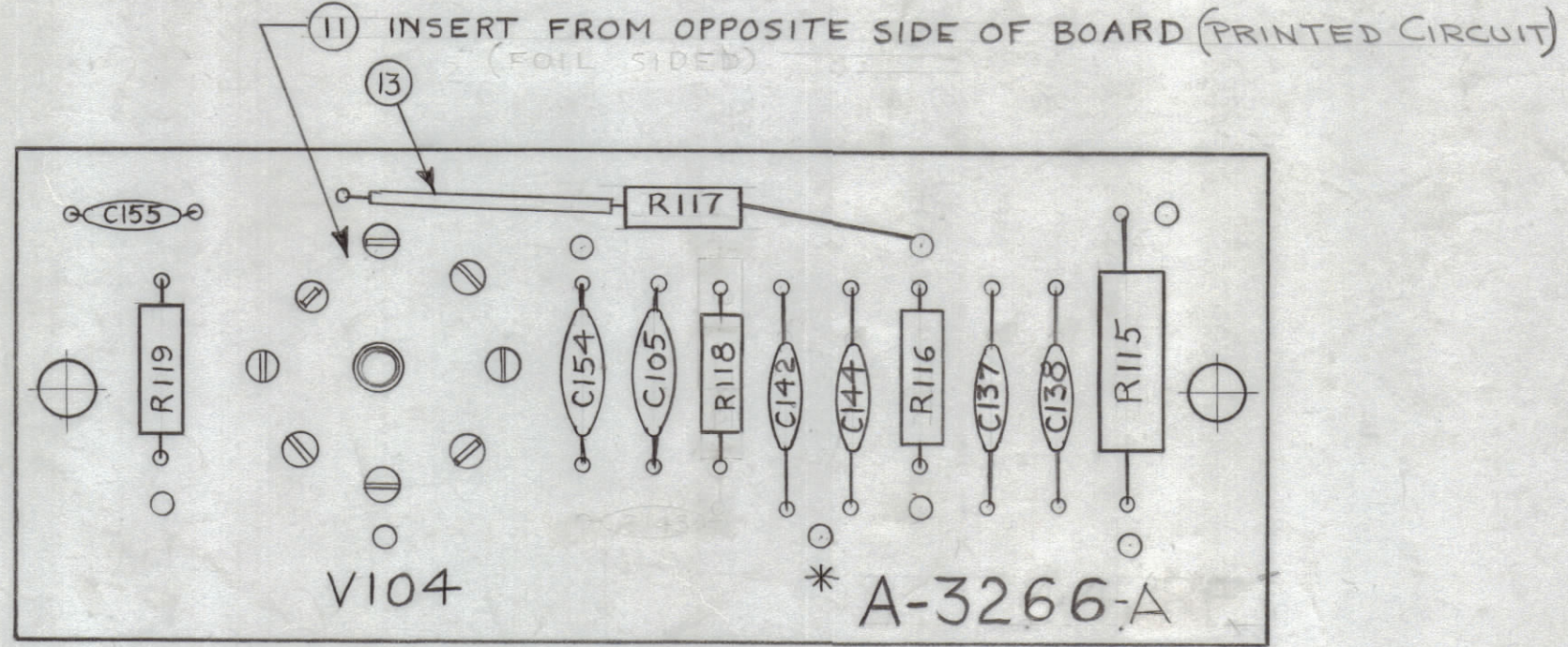
NOTES:
 1. ALL LETTERING TO BE 3/32 HIGH, BLACK GOTHIC, .020 STROKE.
 2. MARKING PROCESS AS PER TMC SPEC. S-727.
 3. LETTERING TO BE PLACED ± 1/64 AS SHOWN.



A-3266-3
 MARKING (TOP VIEW SHOWN)
 MOUNT (ITEM 9) ON
 ON PRINTED CIRCUIT
 SIDE. ONE (1) ONLY.



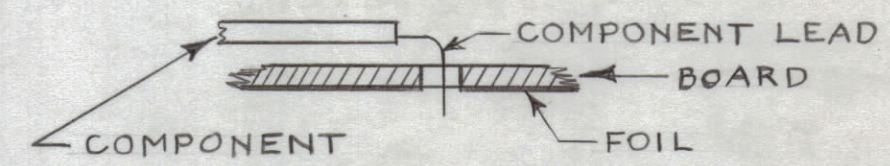
A-3266-4
 SUB-ASSY



A-3266-5
 ELECTRICAL ASSY.
 (A-3266)

REVISIONS							
ZONE	SYM	DESCRIPTION	DATE	E.M.N. NO.	DRAFT	CHKD	APPD
A		ON B/M IT. 3 WAS "272K"; CHGD. IT. 1, 2, 4 & 12 FROM "K" TO "J"	3-8-66	15845	NCA		

ASSEMBLY NOTICE
 1- TO MOUNT COMPONENTS INSERT LEAD THROUGH PLATED-THRU HOLES & BEND ABOUT 1/16 OF LEAD OVER COPPER FOIL AS SHOWN.
 2- APPLY HEAT & SOLDER TO LEAD & FOIL - CAUTION - TOO MUCH HEAT WILL CAUSE THE FOIL TO SEPARATE FROM THE BOARD.
 3- CLEAN & INSPECT AS PER S-676.



REQ'D.	ITEM	PART NUMBER	DESCRIPTION	SYMBOL
-	13	PX-104-1-.034	INSULATION, SLEEVING	
1	12	RC20GF100J	RESISTOR, FIXED, COMPOSITION	R117
1	11	TS-160-1	SOCKET, TUBE	V104
-	10	BS-100	SOLDER, SOFT	
9	9	TE-127-2	TERMINAL, STUD	
2	8	CC-100-24	CAPACITOR, FIXED, CERAMIC, DISC.	
3	7	↑ -16		
1	6	↑ -9		C138
1	5	CC-100-15	CAPACITOR, FIXED, CERAMIC, DISC.	C144
1	4	RC20GF472J	RESISTOR, FIXED, COMPOSITION	R119
1	3	RC32GF103J		R115
1	2	RC20GF124J		R116
1	1	RC20GF101J	RESISTOR, FIXED, COMPOSITION	R118

M. GELLMAN LIST OF MATERIAL			
MATERIAL	FINISH	THE TECHNICAL MATERIEL CORP. MAMARONECK, NEW YORK	
-	-	TITLE PRINTED CIRCUIT BOARD, ASSY (TOP VIEW SHOWN)	
UNLESS OTHERWISE SPECIFIED DIMENSIONS ARE IN INCHES AND INCLUDE CHEMICALLY APPLIED OR PLATED FINISHES		DRAWN	DATE
DECIMALS X ± .05 XX ± .01 XXX ± .005		H. P. [Signature]	8-6-63
FRACTIONS ± 1/64 ANGLES ± 0° 30'		CHECKED	DATE
TOLERANCES		[Signature]	11/5/63
		ELECT. DES.	DATE
		[Signature]	
		MECH. DES.	DATE
		[Signature]	11-7-63
		SHEET 2 OF 2	
		REV. LTR.	
		A-3266 A	

1	GPR-92	
Q'TY./UNIT	MODEL USED ON	ASSY. NO.
SCALE 2:1	CODE A	

THE CONTENTS OF THIS DRAWING ARE THE EXCLUSIVE PROPERTY OF THE TECHNICAL MATERIEL CORP. ITS UNAUTHORIZED USE OR REPRODUCTION IN WHOLE OR IN PART IS STRICTLY FORBIDDEN.

NOTES