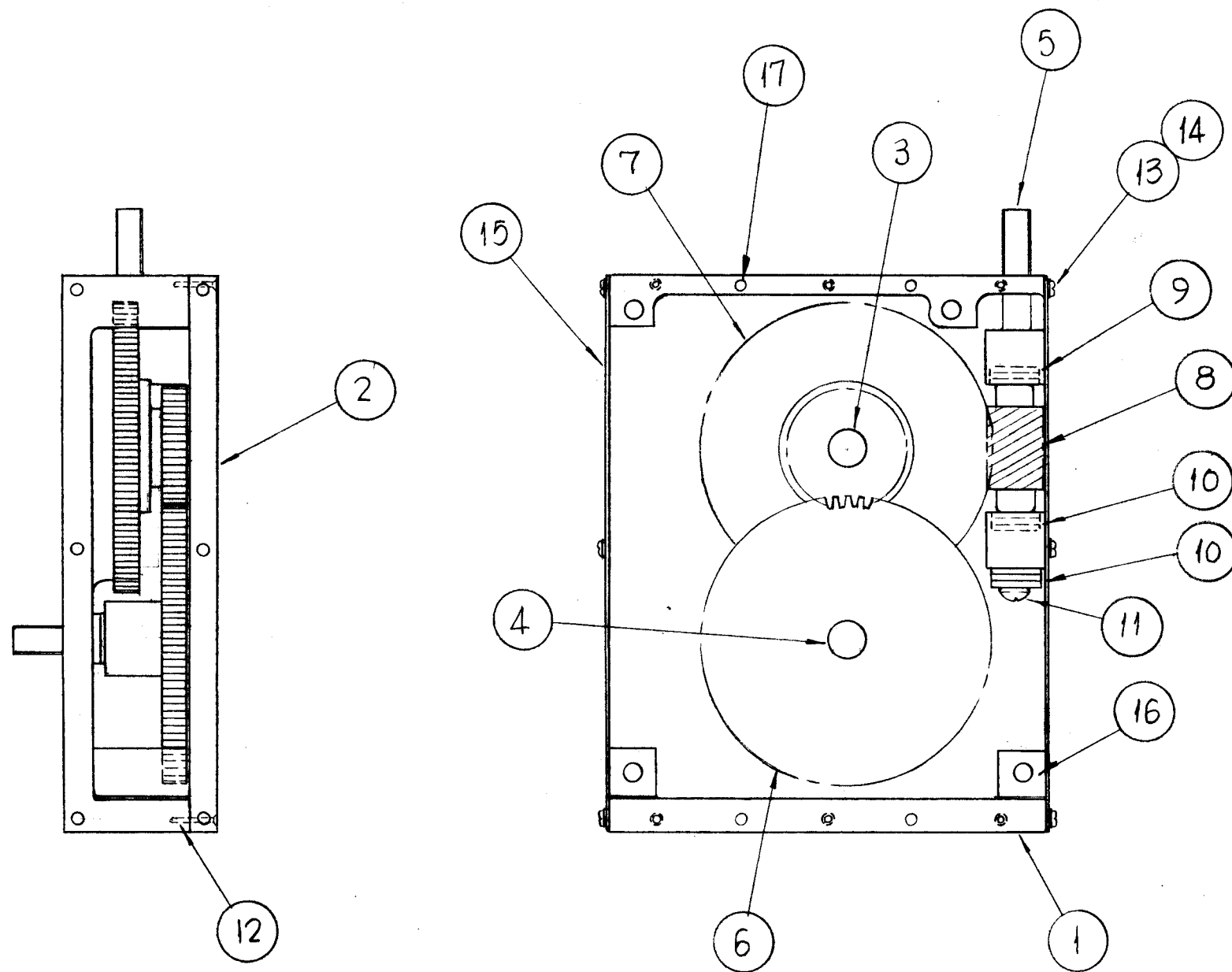


A-3236

THE CONTENTS OF THIS DRAWING ARE THE EXCLUSIVE PROPERTY OF THE TECHNICAL MATERIEL CORP. ITS UNAUTHORIZED USE OR REPRODUCTION IN WHOLE OR IN PART IS STRICTLY FORBIDDEN.

**NOTE:**

IF SHIMS ARE TO BE USED UPON ASS'Y, LENGTH OF SHIM TO BE DETERMINED BY MFG. FOR FIT OF PARTS INVOLVED.



SHOWN WITH PLATE OFF

SHOWN WITH COVER OFF

4	17	PN-116-M-4-S	PIN, DOWEL	
2	16	PM-878	STANDOFF	
2	15	MS-3516	PLATE, SIDES	
12	14	LW504MRN	WASHER, LOCK, SPLIT	
12	13	SCBP0440BN3	SCREW, MACHINE	
6	12	SCFP0440BN9	SCREW, MACHINE	
1	11	SC-159-10325511	SCREW, NYLOCK, SOCKET HEAD, BUTTON	
2	10	BB-129-14	BEARING, RACE	
1	9	BB-129-15	BEARING, RACE	
1	8	GR-193-2	GEAR, WORM	
1	7	GR-193-1	GEAR, WORM & SPUR	
1	6	GR-194	GEAR, SPUR	
1	5	PM-948	SHAFT, CAP. GEAR BOX	
1	4	PM-947	SHAFT, CAP. GEAR BOX	
1	3	PM-944	SHAFT, CAP. GEAR BOX	
1	2	PM-957	PLATE, RETAINING	
1	1	PM-921	CAPACITOR GEAR BOX (TUNE)	

REQ.	ITEM	PART NO.	F. BUDETTI	DESCRIPTION	SYMBOL
			THE TECHNICAL MATERIEL CORP. MAMARONECK, NEW YORK		
STOCK SIZE					
			CAP. GEAR BOX ASS'Y (TUNE)		
MATERIAL					
			SRG	aa	Ric 3-30-64
TYPE & TEMPER		HEAT TREAT. SPEC.	DRAWN	CHECKED	FINAL APPROVAL
			BB	BB	A-3236
FINISH & SPEC. NO.			ELEC. DES. APP.	MECH. DES. APP.	
					0

○ ORIGINAL RELEASE FOR PRODUCTION	31-64					
SYM	DESCRIPTION	DATE	CH. NO.	DRAFTS	CHECKER	ENG. APP.
UNLESS OTHERWISE SPECIFIED:		SCALE: 1/2"=1"				
DIMENSIONS ARE IN INCHES		MAXIMUM ALLOWABLE TOLERANCES HAVE BEEN DETERMINED AND ANY DEVIATIONS WILL BE CAUSE FOR REJECTION.				
TOLERANCES ON FRACTIONS ± 1/64 DECIMALS ± .005 ANGLES ± 1/2°		REMOVE ALL BURRS AND SHARP EDGES				

1	GPT-200K	AX-395	AX-3184	9-30-63
REQ. PER UNIT	MODEL	SECTION	ASS'Y. NO.	DATE
USED ON				