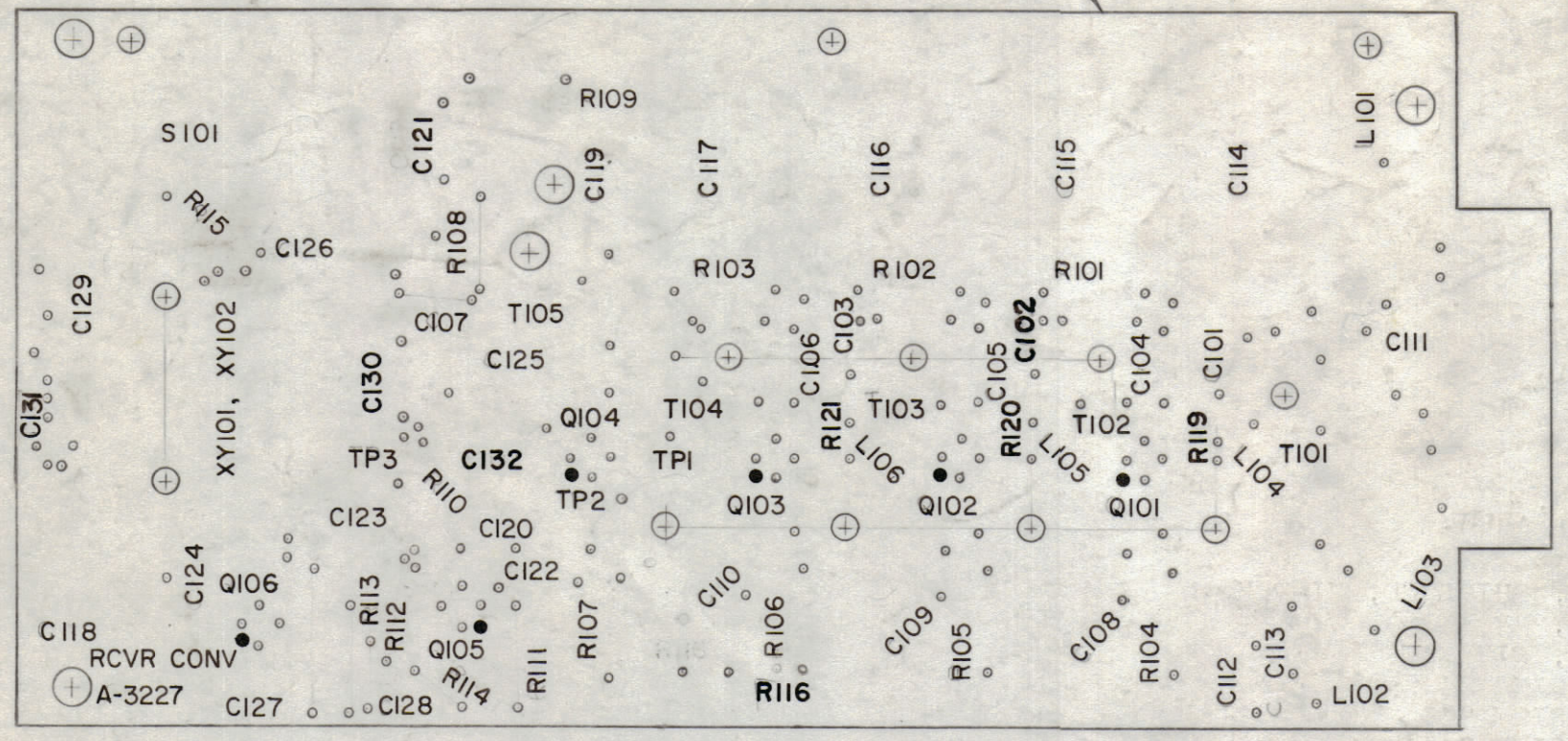


REVISIONS							
ZONE	SYM	DESCRIPTION	DATE	E.M.N. NO.	DRAFT	CHKD	APPD
	G	COMPLETELY REVISED B.U.S. ADDED ITEMS 64 THRU 67; ON MARKING C132 WAS L107; ADDED IT. 64 CALLOUT ON ELECT. ASSY.	7/6/66	16491	JL	QCB	MMH
	H	ADDED R118, R120, R121. IT. 63 WAS W122-20 ADDED * TO IT 67 & * R118 NOTE, DELE. C102 INTG. DETAIL. ADDED INTG DETAIL FOR C103 & R121	10/16/66	16995	RME	QCB	MMH
	J	IT. 28 WAS RC20GF47J, ADDED NOTE FOR IT. 28. RELOC. R116 LETTERING.	2-21-67	17837	RME	QCB	MMH



A-3227-1 ~ MARKING ~

~ UNLESS OTHERWISE SPECIFIED ~
 1- ALL LETTERING TO BE 3/32 WHITE GOTHIC
 2- MARKING PROCESS PER TMC SPEC. 5727
 LOCATE APPROX. AS SHOWN.
 3- ALL DOTS TO BE 1/16 DIA.

LETTERING

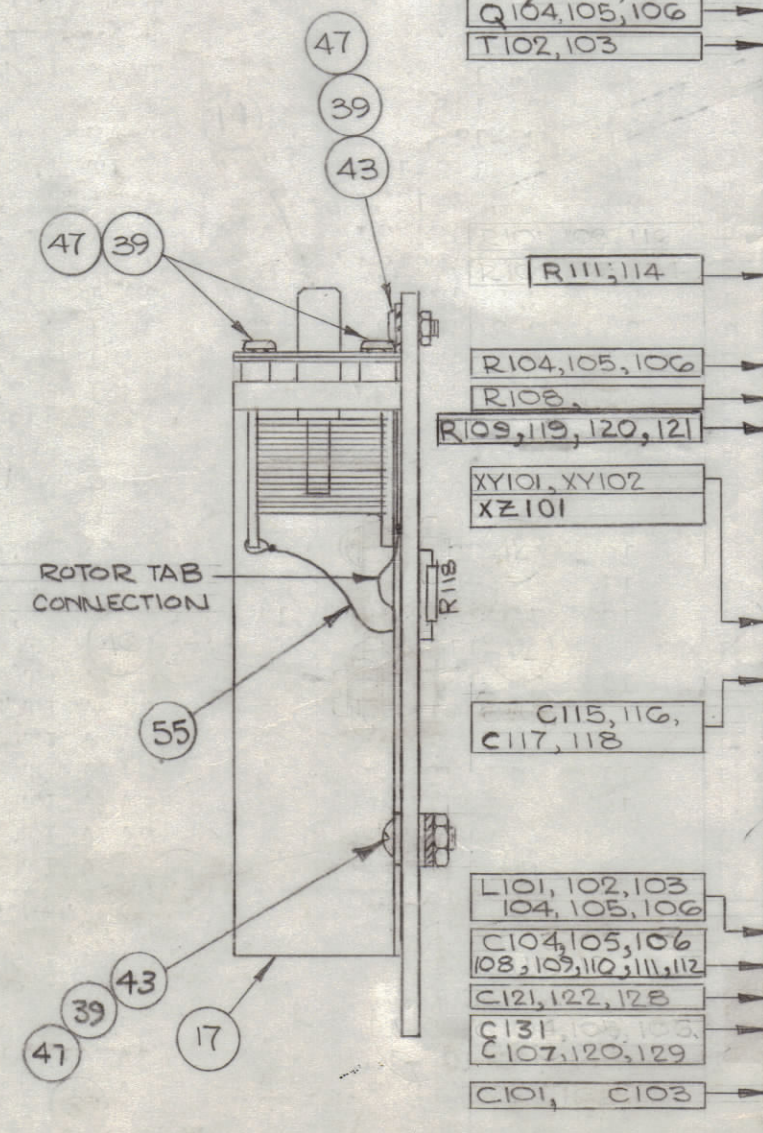
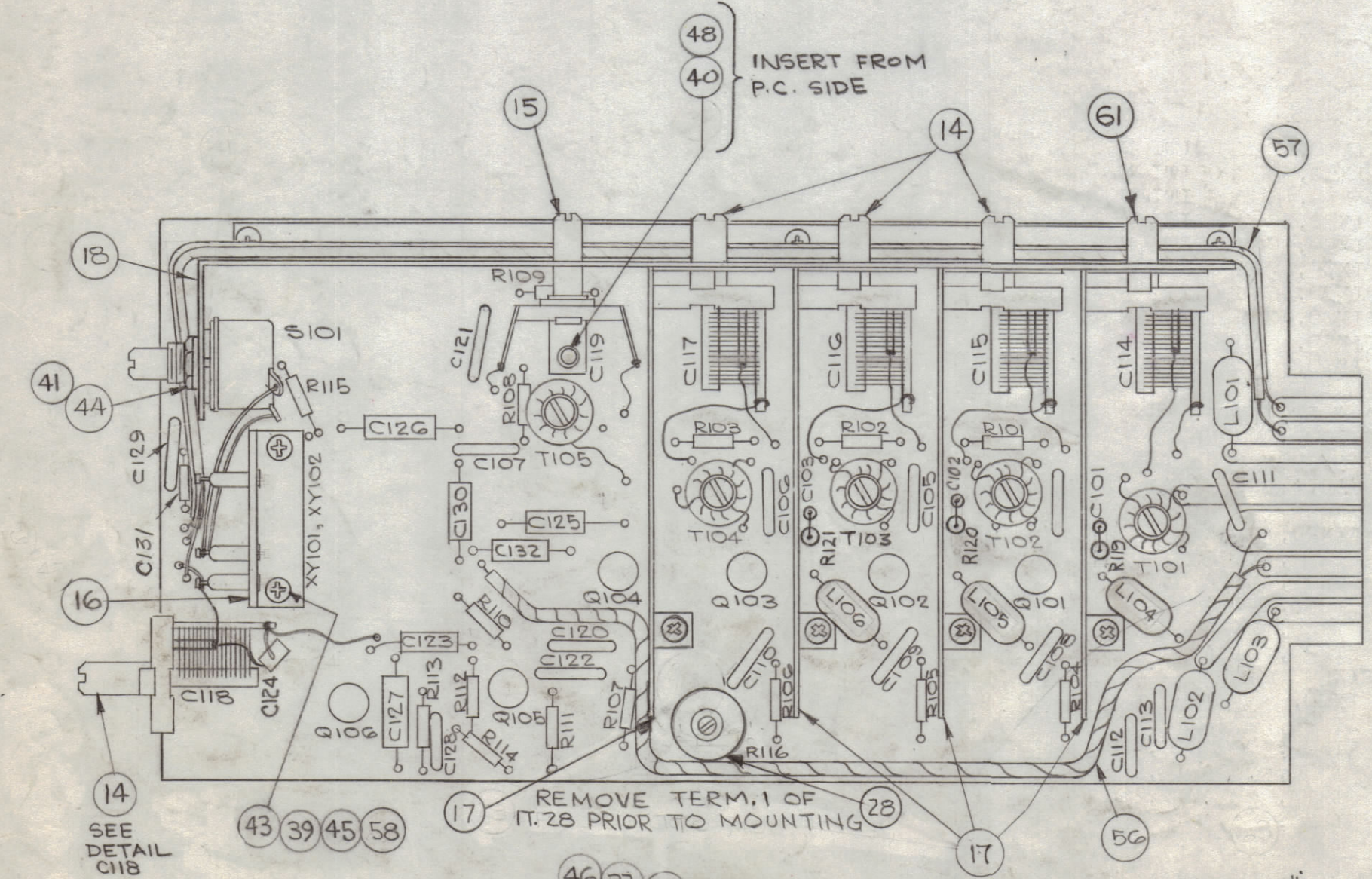
PRINTED CIRCUIT SIDE

* R118 MTD ON PRINTED CIRCUIT SIDE OF BOARD

~ ASSEMBLY NOTICE ~
 1- TO MOUNT COMPONENTS, INSERT LEAD THRU PLATED THRU HOLES AND BEND ABOUT 1/16 OF LEAD OVER COPPER FOIL AS SHOWN.
 2- APPLY HEAT & SOLDER TO LEAD & FOIL ~ CAUTION- TOO MUCH HEAT WILL CAUSE FOIL TO SEPARATE FROM THE BOARD -
 3- CLEAN AND INSPECT AS PER 5676

COMPONENT COMPONENT LEAD
FOIL BOARD

A 3227-2 ~ ELECTRICAL ASSY ~



REQ'D.	ITEM	PART NUMBER	DESCRIPTION	SYMBOL
1	67	RC20GF473J *	RESISTOR, FIXED, COMP	R118
3	66	RC20GF103J	RESISTOR, FIXED, COMP	R101,2,3
1	65	CM11F151J55	CAPACITOR, FIXED, MICA	C132
1/4"	64	PX370-3-7	INSULATION, SLV9, TEF.	
1	63	CC20CK2R2C	CAPACITOR, FIXED, CERAMIC	C102
1	62	CM20F681G03	CAPACITOR, VARIABLE, AIR	C127
1	61	CT103-2	CAPACITOR, VARIABLE, AIR	C114
	60	DELETED		
	59			
2	58	FW04HBN	WASHER, FLAT	
1	57	CA-808-1	CABLE ASSY, SHIELDED, HI-TEMP	W101
1	56	CA-418-8	CABLE ASSY, RF	W102
1-02	55	WL-100-8	WIRE, BUSS, SIZE 24	
0-3	54	PX-104-7-022	SLEEVING, SIZE 24	GRAY
0-2	53	PX-104-6-022	SLEEVING, SIZE 24	BLUE
0-2	52	PX-104-4-022	SLEEVING, SIZE 24	GRN
0-2	51	PX-104-3-022	SLEEVING, SIZE 24	RED
0-2	50	PX-104-2-022	SLEEVING, SIZE 24	YEL.
X	49	BS-100	SOLDER, SOFT	
1	48	SCBP0632BN4	SCREW, MACHINE	
15	47	SCBP0440BN4	SCREW, MACHINE	
5	46	SC-143-0440B10	SCREW, MACHINE, NYLON	
2	45	SCBP0440BNG	SCREW, MACHINE	
1	44	NTH3732BN18	NUT, HEX	
9	43	NTH0440BN6	NUT, HEX	
10	42	NT-137-0440	NUT, HEX, NYLON	
1	41	LWI37MRN	WASHER, LOCK, INT.	
1	40	LWI06MRN	WASHER, LOCK, INT.	
17	39	LWE04MRN	WASHER, LOCK, EXT.	
	38			
10	37	FW-101-1	WASHER, FLAT, NYLON	
6	36	PX-829-1	PAD, TRANSISTOR MTG.	
6	35	T11/3	TRANSISTOR	
2	34	TZ-129	TRANSFORMER, RF	
1	33	TZ-130	TRANSFORMER, RF	T104
1	32	TZ-128	TRANSFORMER, RF	T101
1	31	TZ-127	TRANSFORMER, RF	T105
1	30	SW-102-12NSJ	SWITCH, ROTARY	S101
1	29	RC20GF123J	RESISTOR, FIXED, COMPOSITION	R107
1	28	RV11U502A	RESISTOR, VARIABLE, COMPOSITION	R116
2	27	RC20GF392J	RESISTOR, FIXED, COMPOSITION	
	26	DELETED		
2	25	RC20GF222J	RESISTOR, FIXED, COMPOSITION	R115
3	24	RC20GF122J	RESISTOR, FIXED, COMPOSITION	R112
1	23	RC20GF102J	RESISTOR, FIXED, COMPOSITION	
4	22	RC20GF471J	RESISTOR, FIXED, COMPOSITION	
1	21	RC20GF680J	RESISTOR, FIXED, COMPOSITION	R110
1	20	RC20GF470J	RESISTOR, FIXED, COMPOSITION	R113
1	19	PC-100-3	MECHANICAL ASSY, PC BOARD	
1	18	MS-3372	BRACKET, CAPACITOR MTG.	
4	17	MS-3380	SHIELD, RF	
1	16	LD-1342/MS-3414	BRACKET, XTAL/OVEN SOCKET	
1	15	CV-113-10	CAPACITOR, VARIABLE, MICA	C119
4	14	CT-103-1	CAPACITOR, VARIABLE, AIR	
1	13	CM100-14	CAPACITOR, FIXED, MICA	C125
1	12	CM15F271J03	CAPACITOR, FIXED, MICA	C123
1	11	CM-15C050J03YY	CAPACITOR, FIXED, MICA	C124
1	10	CM15F111J03	CAPACITOR, FIXED, MICA	C126
1	9	CM20B561J	CAPACITOR, FIXED, MICA	C130
	8	DELETED		
	7	DELETED		
6	6	CL-140-7	COIL, RF, FIXED	
8	5	CC-100-33	CAPACITOR, FIXED, CERAMIC, DISC	
3	4	CC-100-25	CAPACITOR, FIXED, CERAMIC, DISC	
4	3	CC-100-16	CAPACITOR, FIXED, CERAMIC, DISC	
1	2	CC-100-15	CAPACITOR, FIXED, CERAMIC, DISC	C113
2	1	CC20CK2R2C	CAPACITOR, FIXED, CERAMIC	

PALMER LIST OF MATERIAL			
MATERIAL	THE TECHNICAL MATERIEL CORP. MAMARONECK, NEW YORK		
FINISH	TITLE PRINTED CIRCUIT BOARD ASSEMBLY, RECEIVER MODULE, 2-4 MC		
UNLESS OTHERWISE SPECIFIED DIMENSIONS ARE IN INCHES AND INCLUDE CHEMICALLY APPLIED OR PLATED FINISHES	DRAWN	DATE	FINAL APPROVAL
	W. A. PALMER	11/12/63	B.P.
	MECH. DES. RK	11/12/63	A 3227
		DATE 1-16-64	SHEET

MOUNTING DETAIL FOR SYMBOLS T101 THRU T105

MOUNTING DETAIL FOR C103 & R121, C102 & R120, C101 & R119.

NOTES

1	TTRR-1	A-2740
Q'TY./UNIT	MODEL USED ON	ASS'Y. NO.
SCALE	CODE	
	A	
THE CONTENTS OF THIS DRAWING ARE THE EXCLUSIVE PROPERTY OF THE TECHNICAL MATERIEL CORP. ITS UNAUTHORIZED USE OR REPRODUCTION IN WHOLE OR IN PART IS STRICTLY FORBIDDEN.		
DECIMALS .X ± .05 .XX ± .01 .XXX ± .005	TOLERANCES	FRACTIONS ± 1/64 ANGLES ± 0° 30'

H

G

F

E

D

C

B

A

REV. LTR.