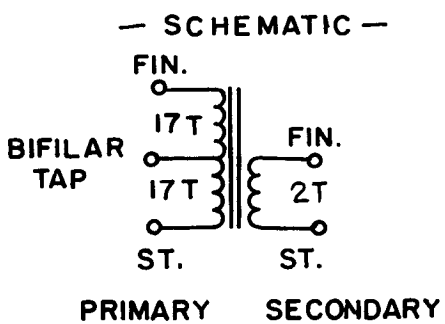
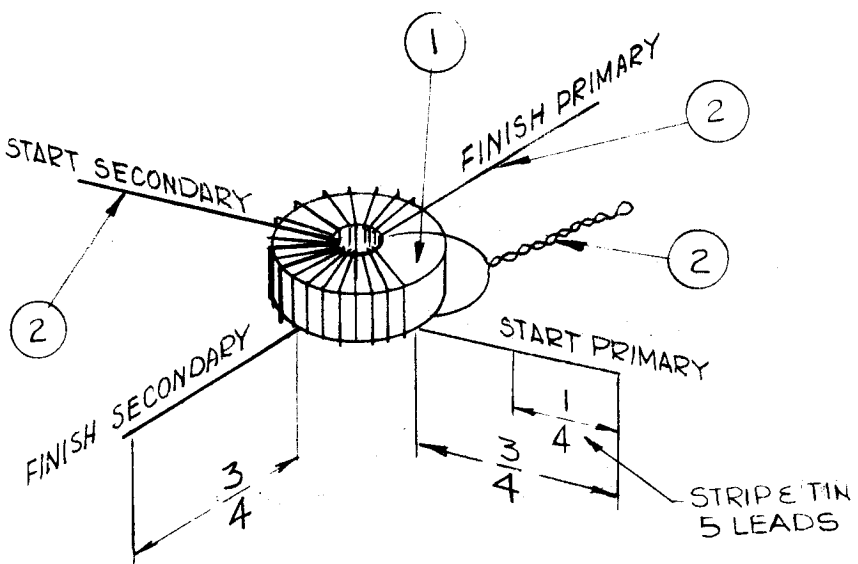


REQ. PER UNIT	USED ON			A-3213	A
	MODEL	ASSY. NO.	DATE		
1	TTR-10	A-3222	7-11-63		



**-WINDING PROCEDURE-**

1. WIND 17 BIFILAR TURNS OF ITEM 2 ON ITEM 1, CLOSEWOUND. (PRI)
2. WIND 2 TURNS OF ITEM 2 ON ITEM 1, CLOSEWOUND, AS SHOWN-(SEC)
3. STAKE LEADS SECURELY WITH ITEM 3 (Q. MAX.)
4. BAKE FOR 1/2 HOUR AT 215° F TO REMOVE MOISTURE.
5. COAT COIL & CORE WITH ITEM 3 AND BAKE 1/2 HOUR AT 215° F.
6. TEST AS NOTED BELOW IN ELECTRICAL SPECIFICATIONS

**-ELECTRICAL SPECIFICATIONS-**

STRIP & TIN 1/4" FROM LEAD ENDS (ALL 5 LEADS)  
 CLAMP COIL INTO Q-METER 1/4 INCH AWAY FROM (PRI)  
 START AND FINISH LEADS WITH START LEAD TO LOW SIDE OF Q-METER  
 INDUCTANCE (PRI.) L=5.5UH ±.300UH (BOONTON 260A Q-METER)  
 MIN. Q=150 AT 7.9 MC  
 DC RESISTANCE = NOT RATED  
 CURRENT RATING = NOT RATED

X	4	BS-100	SOLDER SOFT
X	3	GL-102	ADHESIVE, Q-MAX.
X	2	WI-123-25	WIRE MAGNET, SIZE 25
1	1	CI-127-1	CORE, TOROID

A	DIM 3/4 WAS 1/2 (2PL)	12.7.64	13066	NR	<i>[Signature]</i>	<i>[Signature]</i>
SYM	DESCRIPTION	DATE	CH. NO.	DRAFTS	CHECKER	ENG. APP.
UNLESS OTHERWISE SPECIFIED DIMENSIONS ARE IN INCHES AND INCLUDE CHEMICALLY APPLIED OR PLATED FINISHES		SCALE	DO NOT SCALE			
DECIMALS .X ± .05 .XX ± .01 .XXX ± .005	TOLERANCES	FRACTIONS ± 1/64 ANGLES ± 0° 30'	CODE	A		

REQ. ITEM	PART NO.	R. KOHN	DESCRIPTION	E3037-94	SYMBOL
STOCK SIZE			THE TECHNICAL MATERIEL CORP. MAMARONECK. NEW YORK		
MATERIAL			TZ-124 ASS'Y TRANSFORMER, INTERMEDIATE FREQ..		
TYPE & TEMPER	HEAT TREAT. SPEC.	DRAWN	CHECKED	FINAL APPROVAL	
		R. Kohn	—	A-3213	A
FINISH & SPEC. NO.		ELEC. DES. APP.	MECH. DES. APP.		

THE CONTENTS OF THIS DRAWING ARE THE EXCLUSIVE PROPERTY OF THE TECHNICAL MATERIEL CORP. ITS UNAUTHORIZED USE FOR REPRODUCTION IN WHOLE OR IN PART IS STRICTLY FORBIDDEN.

REQ. PER UNIT

1

USED ON

MODEL

TTR-10

ASS'Y. NO.

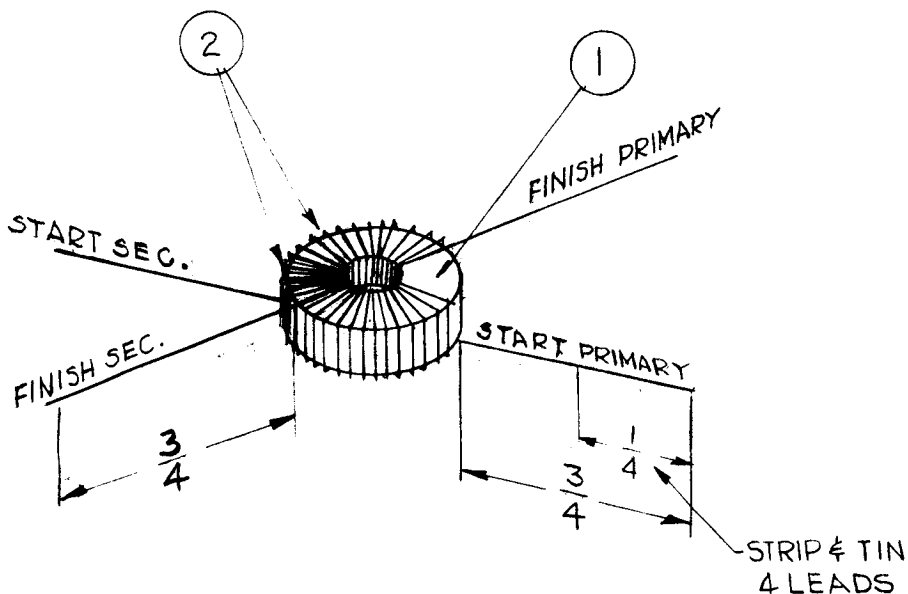
A-3222

DATE

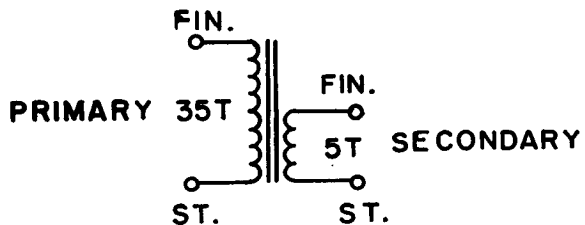
7-12-63

A-3214

A



— SCHEMATIC —



**-WINDING PROCEDURE-**

1. WIND 35 TURNS (PRI) OF ITEM 2 ON ITEM 1, CLOSE WOUND.
2. WIND 5 TURNS (SEC) OF ITEM 2 ON ITEM 1 CLOSE WOUND, AS SHOWN.
3. STAKE LEADS SECURELY WITH ITEM 3. (Q-MAX)
4. BAKE FOR 1/2 HOUR AT 215°F TO REMOVE MOISTURE.
5. COAT COIL & CORE WITH ITEM 3 AND BAKE 1/2 HR. AT 215°F
6. TEST AS NOTED BELOW IN ELECTRICAL SPECIFICATIONS

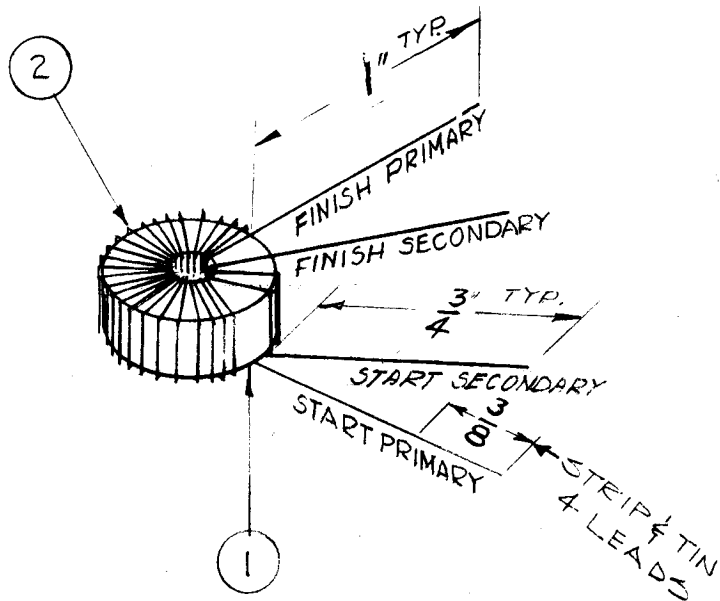
**-ELECTRICAL SPECIFICATIONS-**

STRIP & TIN 1/4" FROM LEAD ENDS. ALL 4 LEADS CLAMP COIL INTO Q-METER 1/4 INCH AWAY FROM (PRI) START & FINISH LEADS WITH START LEAD TO LOW SIDE OF Q METER (BOONTON 260 A Q-METER).  
 INDUCTANCE (PRI) L = 5.0 UHY ±.260 UHY  
 MIN. Q = 215 AT 7.9 MC

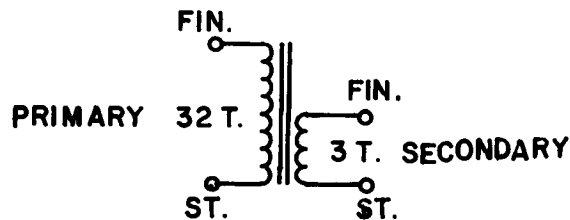
X	4	BS-100	SOLDER, SOFT
X	3	GL-102	ADHESIVE, Q-MAX
X	2	WI-123-25	WIRE, MAGNET, SIZE 25
1	1	CI-127-1	CORE, TOROID

A	DIM 3/4 WAS 1/2 (2P)	12.7.64	13066	HB	<i>[Signature]</i>	
SYM	DESCRIPTION	DATE	CH. NO.	DRAFTS	CHECKER	ENG. APP.
UNLESS OTHERWISE SPECIFIED DIMENSIONS ARE IN INCHES AND INCLUDE CHEMICALLY APPLIED OR PLATED FINISHES		SCALE DO NOT SCALE				
DECIMALS .X ±.05 .XX ±.01 .XXX ±.005	TOLERANCES	FRACTIONS ± 1/64 ANGLES ± 0° 30'	CODE A			

REQ. ITEM	PART NO.	R. KOHN DESCRIPTION	E 3037-93	SYMBOL
STOCK SIZE		THE TECHNICAL MATERIEL CORP. MAMARONECK. NEW YORK		
MATERIAL		TZ-125 ASSY.		
TYPE & TEMPER		TRANSFORMER, IF, FIXED		
HEAT TREAT. SPEC.		GDL	<i>[Signature]</i> 7/18/63	<i>[Signature]</i> BP
FINISH & SPEC. NO.		DRAWN	CHECKED	FINAL APPROVAL
		P. KOHN	—	A-3214   A
		ELEC. DES. APP.	MECH. DES. APP.	



— SCHEMATIC —



REQ. PER UNIT	USED ON			A-3215	B
	MODEL	ASS'Y. NO.	DATE		
1	TTR-10	A-3189	7-29-63		

— WINDING PROCEDURE —

1. WIND 32 TURNS (PRI) OF ITEM 2 ON ITEM 1, CLOSE WOUND.
2. WIND 3 TURNS (SEC) OF ITEM 2 ON ITEM 1, CLOSE WOUND, AS SHOWN.
3. STAKE LEADS SECURELY WITH ITEM 3. (Q-MAX)
4. BAKE FOR 1/2 HOUR AT 215°F TO REMOVE MOISTURE.
5. COAT COIL & CORE WITH ITEM 3 AND BAKE 1/2 HOUR AT 215°F.
6. TEST AS NOTED BELOW IN ELECTRICAL SPECIFICATION

— ELECTRICAL SPECIFICATIONS —

STRIP & TIN ENTIRE LEAD LENGTH ALL 4 LEADS CLAMP COIL INTO Q-METER 3/8 INCH AWAY FROM START & FINISH LEAD ENDS WITH START LEAD TO LOW SIDE OF Q METER

INDUCTANCE (PRI) L= 4.5 UHY ±.200 UHY  
 MIN. Q= 200 AT 7.9 MC  
 (Q METER - BOONTON 260)

X	4	BS-100	SOLDER, SOFT
X	3	GL-102	ADHESIVE, Q-MAX
X	2	WI-123-25	WIRE, MAGNET, SIZE 25
1	1	CI-127-1	CORE, TOROID

SYM	DESCRIPTION	DATE	CH. NO.	DRAFTS	CHECKER	ENG. APP.
B	CHANGE ITEM 5 CIL TO COIL	7/6/66	NO	EMN	C.V	<i>[Signature]</i>
A	ON PICT. 1" WAS 1/2 3/4 W. 1/2 3/8 W. 1/4 ON EL. SPECS. Q-METER WAS 1/2 AWAY	7.28.64	11965	W.B	<i>[Signature]</i>	<i>[Signature]</i>

UNLESS OTHERWISE SPECIFIED DIMENSIONS ARE IN INCHES AND INCLUDE CHEMICALLY APPLIED OR PLATED FINISHES

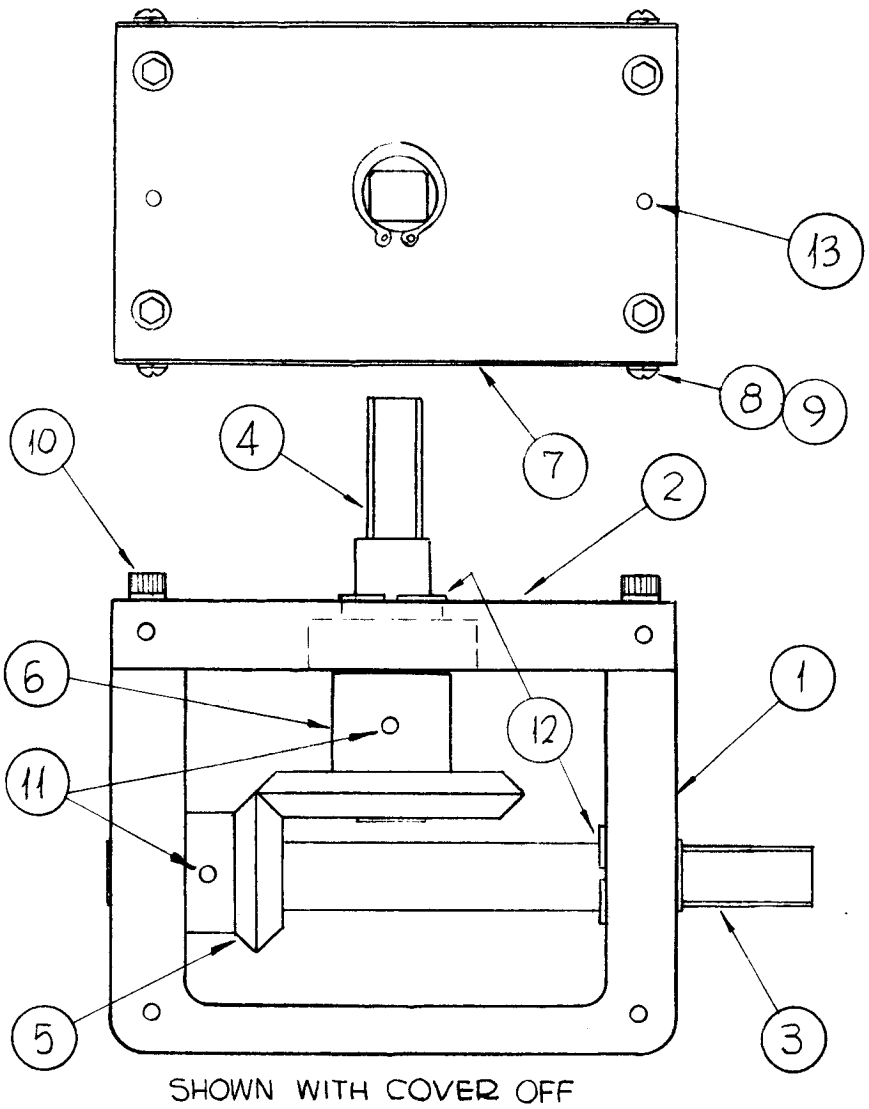
SCALE DO NOT SCALE

DECIMALS: .X ±.05, .XX ±.01, .XXX ±.005  
 FRACTIONS: ± 1/64, ANGLES: ± 0° 30'

TOLERANCES: A

REQ. ITEM	PART NO.	R. KOHN	DESCRIPTION	E 3037-93	SYMBOL
THE TECHNICAL MATERIEL CORP. MAMARONECK, NEW YORK					
STOCK SIZE					
TZ-126 ASSY					
MATERIAL					
TRANSFORMER, 1F, FIXED					
TYPE & TEMPER		HEAT TREAT. SPEC.		DRAWN	
				G.D.L. <i>[Signature]</i> 8/8/63	
				CHECKED	
				FINAL APPROVAL	
				RKohn	
FINISH & SPEC. NO.		ELEC. DES. APP.		MECH. DES. APP.	
				A-3215 B	

REQ. PER UNIT	USED ON			A-3232 0
	MODEL	ASS'Y. NO.	DATE	
1	GPT-200K (AX-395)	A-3195	10-10-63	

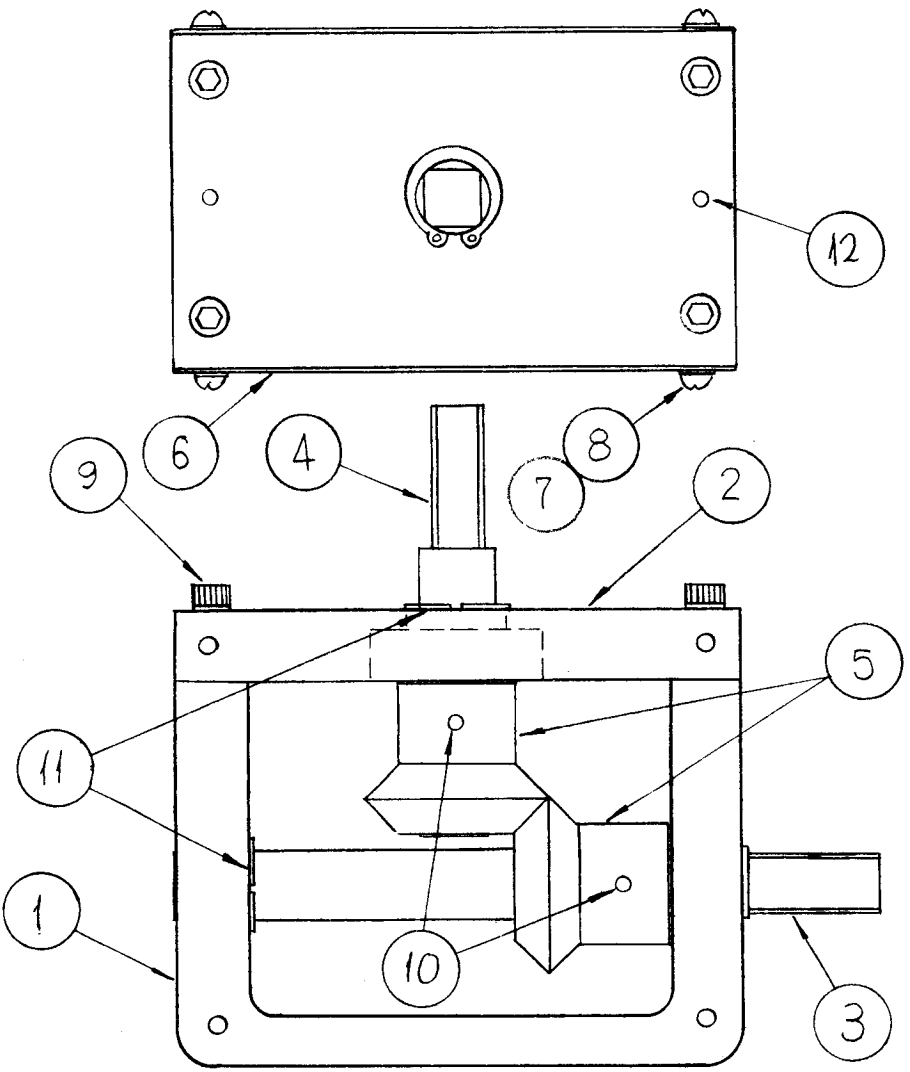


2	13	PN-116-M-4-S	PIN, DOWEL
2	12	WA-138-3	RING, RETAINING, EXTERNAL
2	11	PN-59-094-10	PIN, SPRING
4	10	SC-155-0832SS12	SCREW, SOCKET HEAD
8	9	LWS04MRN	LOCKWASHER, SPLIT
8	8	SFB0440SC3	SCREW, THREAD CUTTING P.H.
2	7	MS-3520	PLATE, SIDES
1	6	GR-198-1	GEAR, BEVEL
1	5	GR-198-2	GEAR, BEVEL
1	4	PM-966	SHAFT, SHORT
1	3	PM-964-2	SHAFT, LONG
1	2	PM-961	PLATE, TOP
1	1	PM-962	BOX, RIGHT ANGLE DRIVE

○ ORIGINAL RELEASE FOR PRODUCTION	DATE	CH. NO.	DRAFTS	CHECKER	ENG. APP.
SYMBOL	DESCRIPTION	SCALE	1" = 1"		
UNLESS OTHERWISE SPECIFIED DIMENSIONS ARE IN INCHES AND INCLUDE CHEMICALLY APPLIED OR PLATED FINISHES		CODE	A		
DECIMALS .X ± .05 .XX ± .01 .XXX ± .005	TOLERANCES	FRACTIONS ± 1/64 ANGLES ± 0° 30'			

REQ. ITEM	PART NO.	F. BUDETTI	DESCRIPTION	SYMBOL
STOCK SIZE		THE TECHNICAL MATERIEL CORP. MAMARONECK, NEW YORK		
MATERIAL		GEAR ASS'Y, RIGHT ANGLE DRIVE 2:1		
TYPE & TEMPER	HEAT TREAT, SPEC.	DRAWN	CHECKED	FINAL APPROVAL
FINISH & SPEC. NO.		SRG		3-30-64
		A-3232 0		

REQ. PER UNIT	USED ON			A-3233 0
	MODEL	ASS'Y. NO.	DATE	
1	GPT-200K(AV-395)	A-3196	10-1-63	



2	12	PN-116-M-4-5	PIN, DOWEL
2	11	WA-138-3	RING, RETAINING, EXTERNAL
2	10	PN-59-094-10	PIN, SPRING
4	9	SC-155-08325512	SCREW, SOCKET HEAD
8	8	LWS04MRN	WASHER, LOCK, SPLIT
8	7	SFB0440SC3	SCREW, THREAD CUTTING P.H.
2	6	MS-3520	PLATE, SIDES
2	5	GR-200-2	GEAR, MITER
1	4	PM-966	SHAFT, SHORT
1	3	PM-964-1	SHAFT, LONG
1	2	PM-961	PLATE, TOP
1	1	PM-962	BOX, RIGHT ANGLE DRIVE

○	ORIGINAL RELEASE FOR PRODUCTION						
SYM	DESCRIPTION	DATE	CH. NO.	DRAFTS	CHECKER	ENG. APP.	
UNLESS OTHERWISE SPECIFIED DIMENSIONS ARE IN INCHES AND INCLUDE CHEMICALLY APPLIED OR PLATED FINISHES		SCALE	1"=1"				
DECIMALS .X ± .05 .XX ± .01 .XXX ± .005	TOLERANCES	FRACTIONS ± 1/64 ANGLES ± 0° 30'	CODE A				

REQ. ITEM	PART NO.	F. BUDETTI	DESCRIPTION	SYMBOL
STOCK SIZE		THE TECHNICAL MATERIEL CORP. MAMARONECK, NEW YORK		
MATERIAL		GEAR ASS'Y, RIGHT & DRIVE 1:1		
TYPE & TEMPER	HEAT TREAT. SPEC.	DRAWN	CHECKED	FINAL APPROVAL
FINISH & SPEC. N .		SRG	AA	RJC 3-30-64
		203	108	A-3233 0
		ELEC. DES. APP.	MECH. DES. APP.	

SYMBOL(S)	ITEM NO.	USED TO MOUNT	QTY	REQ. PER UNIT	USED ON			A3243	Ø
					MODEL	ASS'Y. NO.	DATE		
				1	LFA-4		8/20/64		
	5	A3244	11						

11	5	SCBP0832BN7	SCREW, MACHINE
1	4	MS3365	COVER, BOTTOM
1	3	MS3364	COVER, TOP
1	2	A3245	CHASSIS/FRAME ASSY
1	1	A3244	PANEL ASSY, FRONT

REQ.	ITEM	PART NO.	O. POSE	DESCRIPTION	SYMBOL							
				<b>THE TECHNICAL MATERIEL CORP.</b> MAMARONECK. NEW YORK								
STOCK SIZE				LFA-4 FINAL ASSY								
Ø		ORIGINAL RELEASE FOR PRODUCTION	8.26.64	+	JB							
SYM	DESCRIPTION		DATE	CH. NO.	DRAFTS	CHECKER	ENG. APP.	MATERIAL				
UNLESS OTHERWISE SPECIFIED DIMENSIONS ARE IN INCHES AND INCLUDE CHEMICALLY APPLIED OR PLATED FINISHES			SCALE			ENG COORD		J. SABATINO	<i>RJC</i>			
DECIMALS .X ± .05 .XX ± .01 .XXX ± .005		FRACTIONS ± 1/64 ANGLES ± 0° 30'		CODE		TYPE & TEMPER		HEAT TREAT. SPEC.		DRAWN	CHECKED	FINAL APPROVAL
TOLERANCES											A3243	Ø
						FINISH & SPEC. NO.		ELEC. DES. APP.	MECH. DES. APP.			

SYMBOL(S)	ITEM NO.	USED TO MOUNT	QTY	REQ. PER UNIT	USED ON			A3244	Ø
					MODEL	ASS'Y. NO.	DATE		
				1	LFA-4	A3243	8/20/64		
DS3001	1		1						
DS3002			1						
	2	HA102-2BN	4						
SPARE	3		2						
XF3001	}		1						
DS3003									
R3041									
XF3002	}		1						
DS3004									
R3042									
F3002	4		1						
SPARE			1						
F3001	5		1	2	18	TS106-1	LIGHT, INDICATOR-RED		
SPARE			1	2	17	TE156-32953	TERMINAL, LUG-INS		
F3001	6		1	1	16	TE111-2	TERMINAL, LUG-3/8D		
SPARE			1	2	15	ST22K	SWITCH, TOGGLE, DPST		
M3001	10		1	4	14	SFB0256SN3	SCREW, TAPPING, THREAD CUTTING		
R3001	12		1	4	13	SCFP1032BN10	SCREW, MACHINE		
	13	HA102-2BN	4	1	12	RV4NAYS500A	RESISTOR, VARIABLE, COMPOSITION		
	14	NP103	4	1	11	NP103-74	PLATE, IDENTIFICATION		
S3001	15		1	1	10	MR149	METER, ARBITRARY SCALE		
S3003			1	1	9	MP100-4	KNOB		
	16	RV4	1	1	8	LD1315/MS3366	PANEL, FRONT		
	17	MR149 WRG	2	2	7	HA102-2BN	HANDLE, BOW		
XDS3001	18		1	OPTION {	2	6	FU102-2	FUSE, CARTRIDGE, 2A	115V OPER
XDS3002			1		2	5	FU102-1	FUSE, CARTRIDGE, 1A	230V OPER
					2	4	FU102-.250	FUSE, CARTRIDGE, 1/4A	
					4	3	FH104-3	FUSEHOLDER, INDICATOR	
					4	2	CU139-2B	FERRULE, HANDLE	
					2	1	BI101-47	LAMP, INCANDESCENT	

REQ.	ITEM	PART NO.	O. POSE		DESCRIPTION	SYMBOL
					<b>THE TECHNICAL MATERIEL CORP.</b> MAMARONECK. NEW YORK	
			STOCK SIZE		PANEL ASSY, FRONT	
Ø			826.64	+	MB	
SYM	DESCRIPTION	DATE	CH. NO.	DRAFTS	CHECKER	ENG. APP.
UNLESS OTHERWISE SPECIFIED DIMENSIONS ARE IN INCHES AND INCLUDE CHEMICALLY APPLIED OR PLATED FINISHES		SCALE		MATERIAL		
				ENG COORD	J. SABATINO	<i>RRE</i>
				TYPE & TEMPER	HEAT TREAT. SPEC.	DRAWN
						CHECKED
						FINAL APPROVAL
DECIMALS .X ± .05 .XX ± .01 .XXX ± .005	TOLERANCES	FRACTIONS ± 1/64 ANGLES ± 0° 30'	CODE			
				FINISH & SPEC. NO.	REC. DES. APP.	MECH. DES. APP.
					<i>[Signature]</i>	<i>[Signature]</i>
						A3244
						Ø

SYMBOL(S)	ITEM NO.	USED TO MOUNT	QTY	REQ. PER UNIT	USED ON			A3245	Ø
					MODEL	ASS'Y. NO.	DATE		
				1	LFA-4	A3243	8/21/64		

5	A3248	5
6	A3248	3
7	A3248	5
8	A3248	3
9	A3246	4
	A3247	4

8	9	SCFP0832BN6	SCREW, MACHINE
3	8	SCBP0832BN6	SCREW, MACHINE
5	7	SCBP0632BN6	SCREW, MACHINE
3	6	LWE08MRN	WASHER, LOCK, EXT
5	5	LWE06MRN	WASHER, LOCK, EXT
1	4	A3249	CHASSIS ASSY, MAIN
1	3	A3248	PLATE ASSY, REAR
1	2	A3247	PLATE ASSY, RIGHT SIDE
1	1	A3246	PLATE ASSY, LEFT SIDE

								REQ. ITEM	PART NO.	0. POSE	DESCRIPTION	SYMBOL	
										<b>THE TECHNICAL MATERIEL CORP.</b> MAMARONECK. NEW YORK			
									STOCK SIZE	CHASSIS/FRAME ASSY			
Ø	ORIGINAL RELEASE FOR PRODUCTION	8.26.64	+	WB									
SYM	DESCRIPTION	DATE	CH. NO.	DRAFTS	CHECKER	ENG. APP.			MATERIAL				
UNLESS OTHERWISE SPECIFIED DIMENSIONS ARE IN INCHES AND INCLUDE CHEMICALLY APPLIED OR PLATED FINISHES		SCALE								ENG COORD	J. SRBATINGO		
										DRAWN	CHECKED	FINAL APPROVAL	
DECIMALS	FRACTIONS	CODE									16 8/26/64	A3245	Ø
.X ± .05	TOLERANCES ± 1/64												
.XX ± .01	ANGLES ± 0° 30'												
.XXX ± .005										FINISH & SPEC. NO.	ELEC. DES. APP.	MECH. DES. APP.	



SYMBOL(S)	ITEM NO.	USED TO MOUNT	QTY	REQ. PER UNIT	USED ON			A3246	∅
					MODEL	ASS'Y. NO.	DATE		
				1	LFA-4	A3245	8/21/64		

2	FS102-1	10
4	FS102-1	10
5	FS102-1	10

10	5	SCFP0348BN4	SCREW, MACHINE
10	4	NTH0348BN6	NUT, HEXAGON
1	3	MS3359	PLATE, SIDE, LEFT
10	2	LWS03MRN	WASHER, LOCK, SPLIT
5	1	FS102-1	LOCKSPRING

								REQ. ITEM	PART NO.	O. POSE	DESCRIPTION	SYMBOL	
											THE TECHNICAL MATERIEL CORP. MAMARONECK. NEW YORK		
									STOCK SIZE		PLATE ASSY, LEFT SIDE		
∅	ORIGINAL RELEASE FOR PRODUCTION	8.26.64	+	KB									
SYM	DESCRIPTION	DATE	CH. NO.	DRAFTS	CHECKER	ENG. APP.			MATERIAL				
UNLESS OTHERWISE SPECIFIED DIMENSIONS ARE IN INCHES AND INCLUDE CHEMICALLY APPLIED OR PLATED FINISHES		SCALE								ENG COORD	J. SABATINO		
DECIMALS .X ± .05 .XX ± .01 .XXX ± .005		FRACTIONS ± 1/64 ANGLES ± 0° 30'		TOLERANCES		CODE			TYPE & TEMPER	HEAT TREAT. SPEC.	DRAWN	CHECKED	FINAL APPR VAL
													A3246
									FINISH & SPEC. NO.	ELEC. DES. APP.	MECH. DES. APP.		∅

SYMBOL(S)	ITEM NO.	USED TO MOUNT	QTY	REQ. PER UNIT	USED ON			A3247	Ø
					MODEL	ASS'Y. NO.	DATE		
				1	LFA-4	A3245	8/21/64		
	2	FS102-1	10						
	4	FS102-1	10						
	5	FS102-1	10						
				10	5	SCFP0348BN4	SCREW, MACHINE		
				10	4	NTH0348BN6	NUT, HEXAGON		
				1	3	MS3360	PLATE, SIDE, RIGHT		
				10	2	LWS03MRN	WASHER, LOCK, SPLIT		
				5	1	FS102-1	LOCKSPRING		

								REQ. ITEM	PART NO.	0, POSE	DESCRIPTION	SYMBOL			
										<b>THE TECHNICAL MATERIEL CORP.</b> MAMARONECK. NEW YORK					
									STOCK SIZE	PLATE ASSY, RIGHT SIDE					
Ø	ORIGINAL RELEASE FOR PRODUCTION	826.64	+	WB											
SYM	DESCRIPTION	DATE	CH. NO.	DRAFTS	CHECKER	ENG. APP.			MATERIAL						
UNLESS OTHERWISE SPECIFIED DIMENSIONS ARE IN INCHES AND INCLUDE CHEMICALLY APPLIED OR PLATED FINISHES		SCALE								ENG COORD	J. SABATINO	<i>RSC</i>			
										TYPE & TEMPER	HEAT TREAT. SPEC.	DRAWN	CHECKED	FINAL APPR VAL	
DECIMALS .X ± .05 .XX ± .01 .XXX ± .005	TOLERANCES	FRACTIONS ± 1/64 ANGLES ± 0° 30'	CODE									<i>[Signature]</i>	8/26/64	A3247	Ø
									FINISH & SPEC. NO.	ELEC. DES. APP.	MECH. DES. APP.				

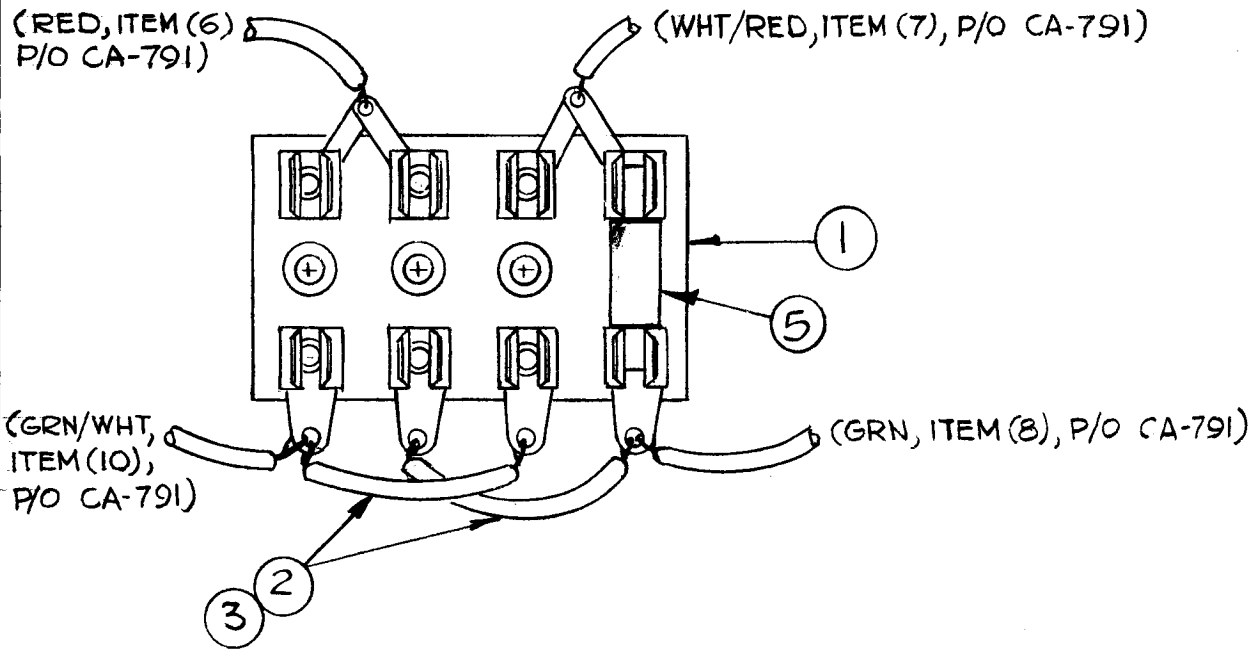
SYMBOL(S)	ITEM NO.	USED TO MOUNT	QTY	REQ. PER UNIT	USED ON			A3248	Ø
					MODEL	ASS'Y. NO.	DATE		
					1	LFA-4	A3245		

J3003	3		1
	5	JJ299	2
	6	JJ299	2
R3037	7		1
	8	JJ299	2
	9	J3001	1
	10	CA409-22 TO JJ299 WRG	1
J3001	11		1
J3002			1
J3004			1
J3005			1

4	11	UG625*/U	CONNECTOR, RECEPTACLE, BNC
1	10	TE149-144	TERMINAL, LUG-NO. 6
1	9	TE111-2	TERMINAL, LUG-3/8D
2	8	SCBP0632BN6	SCREW, MACHINE
1	7	RC20GF472K	RESISTOR, FIXED, COMPOSITION
2	6	NTH0632BN8	NUT, HEXAGON
2	5	LWE06MRN	WASHER, LOCK, EXT
1	4	LD1318/MS3362	PLATE, REAR
1	3	JJ299	CONNECTOR, RECEPTACLE, MALE, AC
1	2	CA409-22-2.00	LEAD, ELECTRICAL
	1	BS100	SOLDER, SOFT

								REQ. ITEM	PART NO.	O. POSE	DESCRIPTION	SYMBOL					
								<b>THE TECHNICAL MATERIEL CORP.</b> MAMARONECK. NEW YORK									
								STOCK SIZE									
Ø	ORIGINAL RELEASE FOR PRODUCTION		826.64	+	LSB												
SYM	DESCRIPTION		DATE	CH. NO.	DRAFTS	CHECKER	ENG. APP.	MATERIAL									
UNLESS OTHERWISE SPECIFIED DIMENSIONS ARE IN INCHES AND INCLUDE CHEMICALLY APPLIED OR PLATED FINISHES			SCALE				ENG COORD J. SABATINO <i>RAC</i>										
							TYPE & TEMPER		HEAT TREAT. SPEC.		DRAWN		CHECKED		FINAL APPR VAL		
DECIMALS .X ± .05 .XX ± .01 .XXX ± .005			FRACTIONS ± 1/64 ANGLES ± 0° 30'			TOLERANCES		CODE		FINISH & SPEC. NO.		ELEC. DES. APP.		MECH. DES. APP.		A3248	

REQ. PER UNIT	USED ON			A-3250	A
	MODEL	ASS'Y. NO.	DATE		
1	LFA-4		12-3-63		



— NOTE —  
ALL SLEEVING TO BE 1/2" SHORTER THAN WIRE, BUSS.

4	5	1N1084A	SEMICOND. DEVICE, DIODE	CR3001-4
X	4	BS-100	SOLDER, SOFT	
X	3	PX-104-1-034	INSULATION, SLEEVING	BLK
X	2	WL-100-7	WIRE, BUSS SZ22	
1	1	CU-138	BLOCK, MTG, POLARIZED	

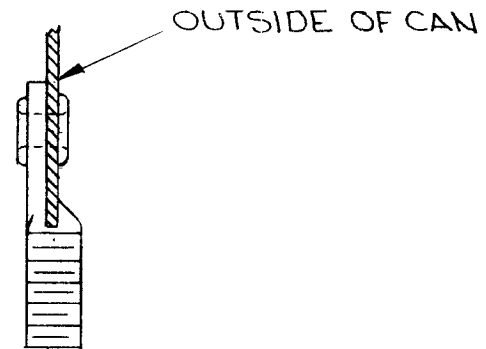
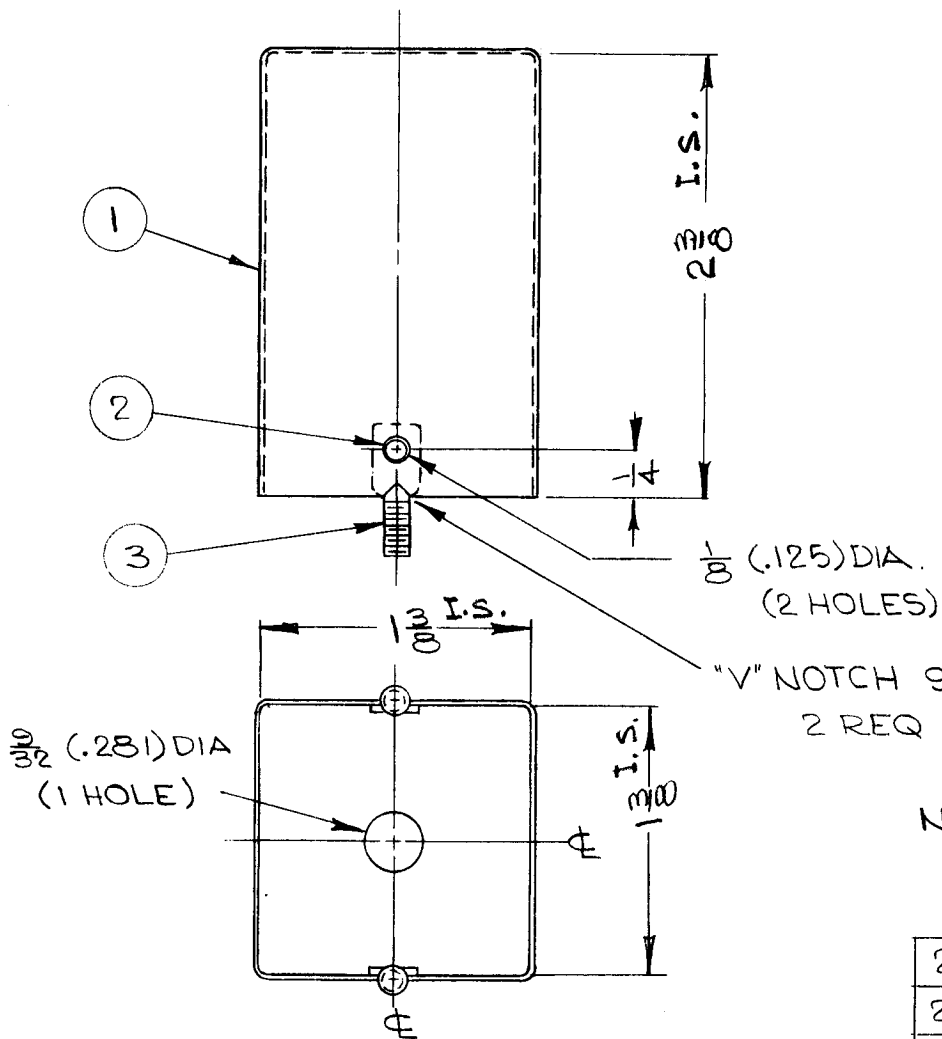
SYM	DESCRIPTION	DATE	CH. NO.	DRAFTS	CHECKER	ENG. APP.
A	IT. 5 ADD. TO B/M & PICT.	2.3.65	13307	hrs	gcb	R
UNLESS OTHERWISE SPECIFIED DIMENSIONS ARE IN INCHES AND INCLUDE CHEMICALLY APPLIED OR PLATED FINISHES		SCALE 1:1				
DECIMALS .X ± .05 .XX ± .01 .XXX ± .005	TOLERANCES	FRACTIONS ± 1/64 ANGLES ± 0° 30'	CODE			

REQ. ITEM	PART NO.	Q. POSE	DESCRIPTION	SYMBOL
STOCK SIZE		THE TECHNICAL MATERIEL CORP. MAMARONECK, NEW YORK		
		BOARD RECTIFIER, ASSY		
MATERIAL		G.D.L	JDe	Bl
TYPE & TEMPER	HEAT TREAT. SPEC.	DRAWN	CHECKED	FINAL APPR VAL
FINISH & SPEC. NO.		DES. APP.	MECH. DES. APP.	A-3250 A

SYMBOL(S)	ITEM NO.	USED TO MOUNT	QTY	REQ. PER UNIT	USED ON			A3251	Ø
					MODEL	ASS'Y. NO.	DATE		
				1	LFA-4	A3249	8/21/64		
C3031	1		1						
L3008	2		1						
L3009	3		1						
L3010			1						
	5	FS102-1	2						
	7	FS102-1	2						
	8	TE102-2	3						
	9	FS102-1	2						
	11	TE102-2	3						
					12	BS100	SOLDER, SOFT		
				3	11	LWS04MRN	WASHER, LOCK, SPLIT		
				3	10	TE102-2	TERMINAL, STUD, INS		
				2	9	SCFP0348BN4	SCREW, MACHINE		
				3	8	SCBP0440BN3	SCREW, MACHINE		
				2	7	LWS03MRN	WASHER, LOCK, SPLIT		
				1	6	FS102-1	LOCKSPRING		
				2	5	NTH0348BN6	NUT, PLN, HEX		
				1	4	LD1319/MS3363	CHASSIS, DIVIDER		
				2	3	CL226-5	COIL, RF, FIXED		
				1	2	CL140-1	COIL, RF, FIXED		
				1	1	CK70AW202M	CAPACITOR, FIXED, CERAMIC		

				REQ.	ITEM	PART NO.	DESCRIPTION		SYMBOL			
							<b>THE TECHNICAL MATERIEL CORP.</b>					
				STOCK SIZE			MAMARONECK. NEW YORK					
							SHIELD ASSY					
Ø	ORIGINAL RELEASE FOR PRODUCTION			8.26.64	+	LB						
SYM	DESCRIPTION	DATE	CH. NO.	DRAFTS	CHECKER	ENG. APP.	MATERIAL					
UNLESS OTHERWISE SPECIFIED DIMENSIONS ARE IN INCHES AND INCLUDE CHEMICALLY APPLIED OR PLATED FINISHES		SCALE					ENG COORD	J. SABATINO	<i>RE</i>			
							TYPE & TEMPER	HEAT TREAT. SPEC.	DRAWN	CHECKED	FINAL APPROVAL	
DECIMALS .X ± .05 .XX ± .01 .XXX ± .005	TOLERANCES	FRACTIONS ± 1/64 ANGLES ± 0° 30'	CODE						<i>RE</i>	6/26/64	A3251	Ø
				FINISH & SPEC. NO.			ELEC. DES. APP.	MECH. DES. APP.				

REQ. PER UNIT	USED ON			A-3254 A
	MODEL	ASS'Y. NO.	DATE	
1	GPR-91RXD	A-3252	8-8-63	



LUG DETAIL

NOTE :  
MODIFY CAN AS SHOWN.

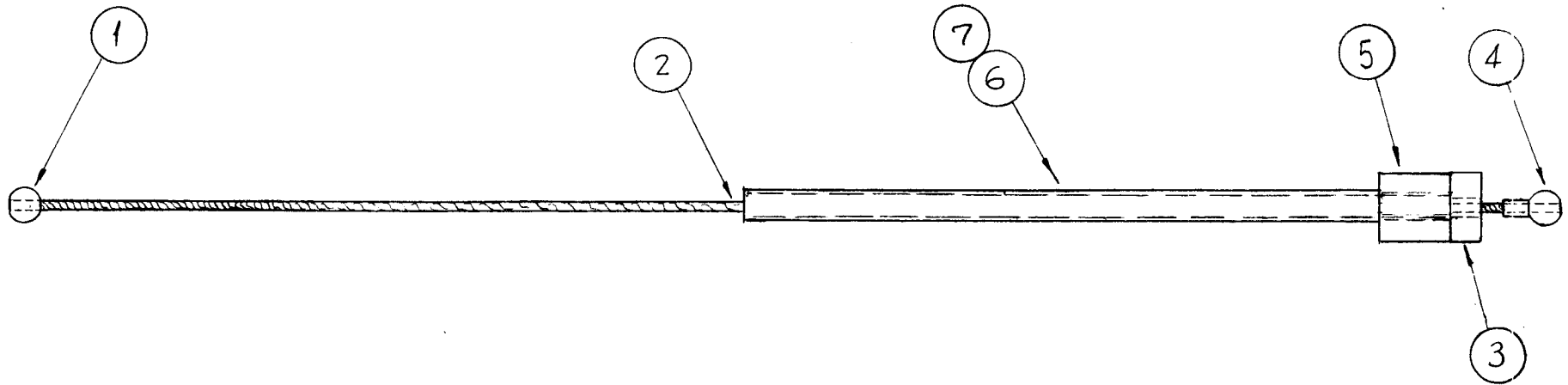
2	3	SC-107-1	BOLT, SPADE
2	2	EY-100-1	EYELET
1	1	BX-102-10	CAN (MODIFIED AS SHOWN)

SYM	DESCRIPTION	DATE	CH. NO.	DRAFTS	CHECKER	ENG. APP.
A	DIM 2-3/8 WAS 2-1/4	12.20.66	17525	wto	gcb	[Signature]
UNLESS OTHERWISE SPECIFIED DIMENSIONS ARE IN INCHES AND INCLUDE CHEMICALLY APPLIED OR PLATED FINISHES		SCALE 1:1				
DECIMALS .X ± .05 .XX ± .01 .XXX ± .005	FRACTIONS ± 1/64 ANGLES ± 0° 30'	TOLERANCES				

REQ. ITEM	PART NO.	R. HAY	DESCRIPTION	SYMBOL
STOCK SIZE		THE TECHNICAL MATERIEL CORP. MAMARONECK. NEW YORK		
MATERIAL		I.F. CAN ASSY		
TYPE & TEMPER	HEAT TREAT. SPEC.	DRAWN	CHECKED	FINAL APPROVAL
		[Signature]	[Signature]	[Signature]
FINISH & SPEC. NO.		ELEC. DES. APP.	MECH. DES. APP.	A-3254 A

REQ. PER UNIT	USED ON		
	MODEL	ASSY. NO.	DATE
4	GPT-200K (AX-395)	A-2821	8-13-63
3	GPT-200K (AX-395)	A-2822	8-13-63
3	GPT-200K (AX-395)	A-2823	8-13-63

A-3255 0



NOTES-

1- MAX. BREAKING STRENGTH IN LBS., 360 LBS  
(IN ACCORDANCE WITH MIL-C-18375)

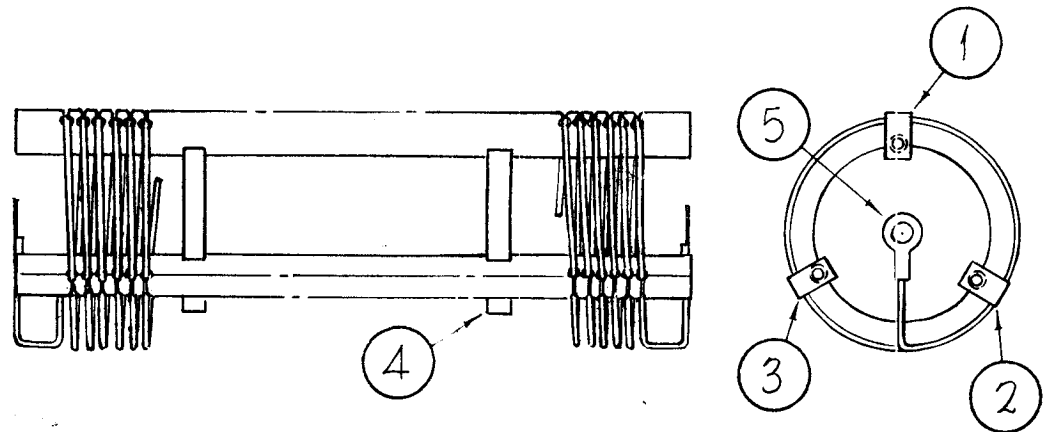
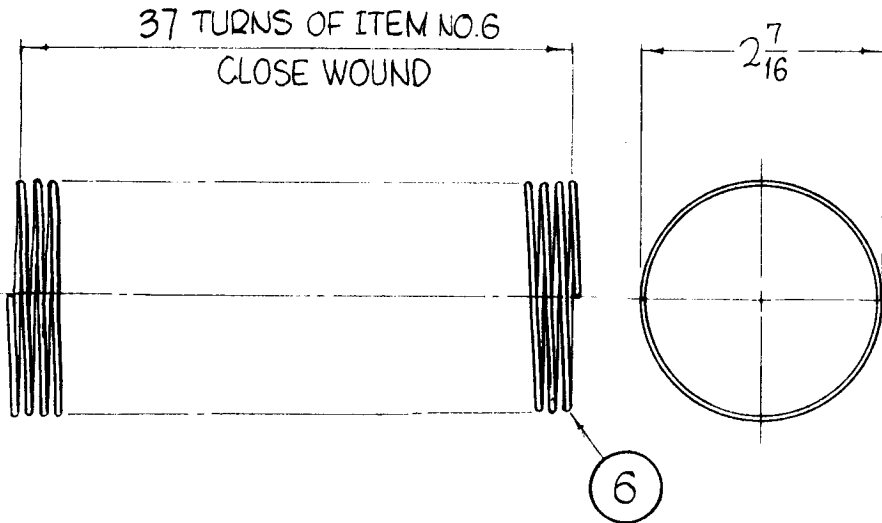
2- CABLE SHOULD BE TESTED AT 60% OF MAX. STRENGTH,  
216 LBS., PRIOR TO SHIPPING.

REQ.	ITEM	PART NO.	DESCRIPTION	SYMBOL
X	7	PX-370-7-7-3.750	INSULATION SLEEVING, TEFLON	NATURAL
X	6	PX-370-11-7-4.250	INSULATION SLEEVING, TEFLON	NATURAL
1	5	TE-176-3	STANDOFF, SILICONE GLASS	
1	4	PO-292	BALL, END WIRE ROPE STOP	
1	3	PM-988	COLLAR, STOP	
1	2	WI-145-1	CABLE, AIRCRAFT	
1	1	PO-291	BALL, END, WIRE ROPE STOP	

SYM	DESCRIPTION	DATE	CH. NO.	DRAFTS	CHECKER	ENG. APP.
0	ORIGINAL RELEASE FOR PRODUCTION	3-1-64				
UNLESS OTHERWISE SPECIFIED DIMENSIONS ARE IN INCHES AND INCLUDE CHEMICALLY APPLIED OR PLATED FINISHES		SCALE	1"=1"			
DECIMALS .X ± .05 .XX ± .01 .XXX ± .005		FRACTIONS ± 1/64 ANGLES ± 0° 30'		CODE	S401-277	
TOLERANCES						

REQ.	ITEM	PART NO.	F. BUDETTI	DESCRIPTION	SYMBOL
STOCK SIZE			THE TECHNICAL MATERIEL CORP. MAMARONECK, NEW YORK		
MATERIAL			WIRE ROPE, ASSY		
TYPE & TEMPER		HEAT TREAT. SPEC.	DRAWN	CHECKED	FINAL APPROVAL
FINISH & SPEC. NO.		ELEC. DES. APP.		MECH. DES. APP.	A-3255 0

REQ. PER UNIT	USED ON			A-3261	A
	MODEL	ASS'Y. NO.	DATE		
2	GPT-200K	AX-395	10-3-63		



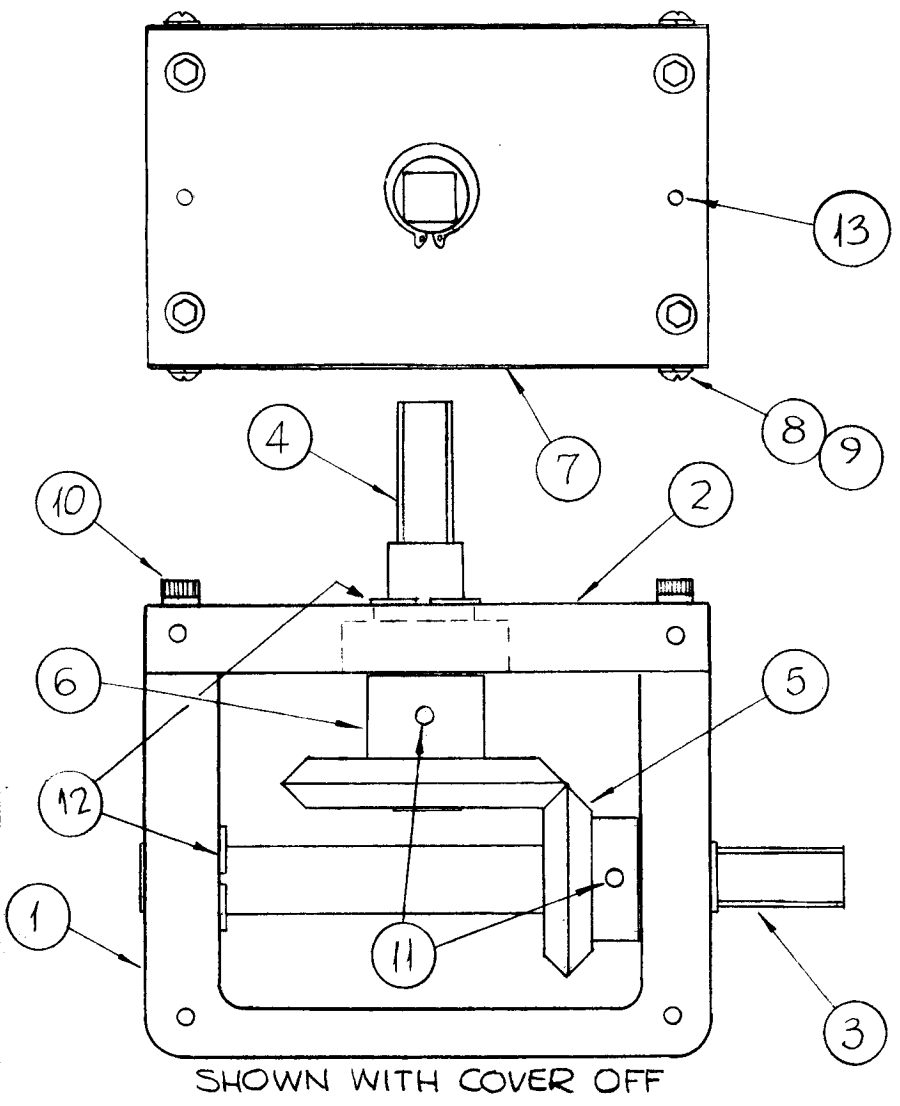
X	6	WI-139-1	WIRE, ELECTRICAL
2	5	TE-159-32961	LUG, SOLDERLESS
2	4	PX-720	SPACER, COIL
1	3	PX-721-3	SUPPORT, COIL
1	2	PX-721-2	SUPPORT, COIL
1	1	PX-721-1	SUPPORT, COIL

A	IT.5 WAS TE-156-32961	9.2.64	12257	WB	@	WB
O	ORIGINAL RELEASE	5.18.64		WB		
X1	NO. OF TURNS WAS 39	1-6-64				
SYM	DESCRIPTION	DATE	CH. NO.	DRAFTS	CHECKER	ENG. APP.
UNLESS OTHERWISE SPECIFIED DIMENSIONS ARE IN INCHES AND INCLUDE CHEMICALLY APPLIED OR PLATED FINISHES		SCALE 1/2" = 1"				
DECIMALS .X ± .05 .XX ± .01 .XXX ± .005	TOLERANCES	FRACTIONS ± 1/64 ANGLES ± 0° 30'	CODE			

REQ. ITEM	PART NO.	F. BUDETTI	DESCRIPTION	SYMBOL
STOCK SIZE		THE TECHNICAL MATERIEL CORP. MAMARONECK. NEW YORK		
MATERIAL		ASS'Y. COIL		
TYPE & TEMPER	HEAT TREAT. SPEC.	DRAWN	CHECKED	FINAL APPROVAL
		John C. Biele	aa	Ric
FINISH & SPEC. NO.		ELEC. DES. APP.	MECH. DES. APP.	A-3261   A



REQ. PER UNIT	USED ON			A-3262	O
	MODEL	ASS'Y. NO.	DATE		
1	GPT-200K (AK-325)	A-3197	10-10-63		

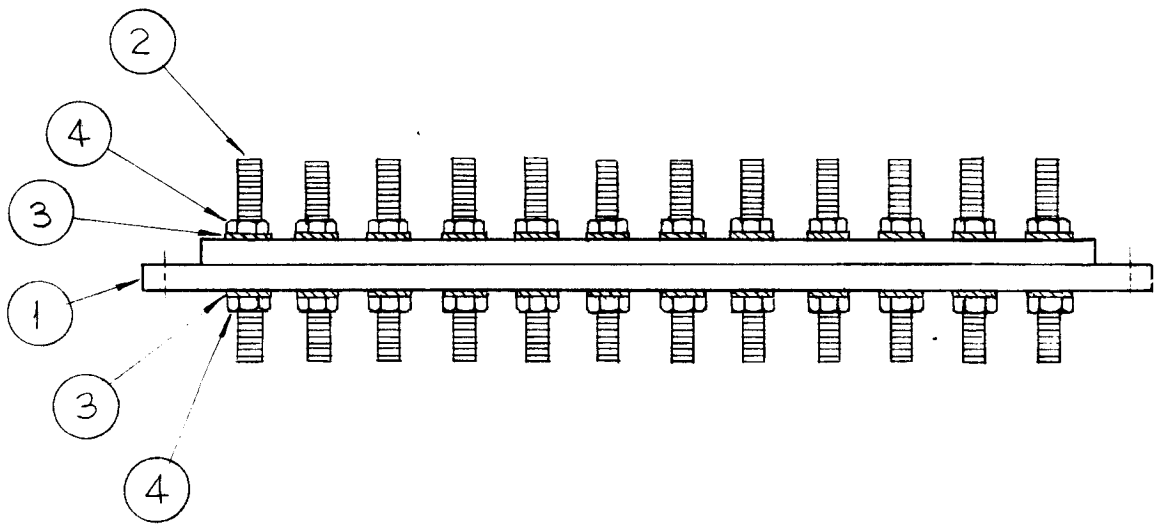


2	13	PN-116-M-4-5	PIN, DOWEL
2	12	WA-138-3	RING, RETAINING, EXTERNAL
2	11	PN-59-094-10	PIN, SPRING
4	10	SC-155-0832SS12	SCREW, SOCKET HEAD
8	9	LWS04MRN	LOCKWASHER, SPLIT
8	8	SFB0440SC3	SCREW, THREAD CUTTING P.H.
2	7	MS-3520	PLATE, SIDES
1	6	GR-198-3	GEAR, BEVEL
1	5	GR-198-4	GEAR, BEVEL
1	4	PM-966	SHAFT, SHORT
1	3	PM-964-1	SHAFT, LONG
1	2	PM-961	PLATE, TOP
1	1	PM-962	BOX, RIGHT ANGLE DRIVE

SYMBOL	DESCRIPTION	DATE	CH. NO.	DRAFTS	CHECKER	ENG. APP.
○	ORIGINAL RELEASE FOR PRODUCTION					
UNLESS OTHERWISE SPECIFIED DIMENSIONS ARE IN INCHES AND INCLUDE CHEMICALLY APPLIED OR PLATED FINISHES		SCALE	1" = 1"			
DECIMALS .X ± .05 .XX ± .01 .XXX ± .005	TOLERANCES	FRACTIONS ± 1/64 ANGLES ± 0° 30'	CODE	A		

REQ. ITEM	PART NO.	F. BUDETTI	DESCRIPTION	SYMBOL
			THE TECHNICAL MATERIEL CORP. MAMARONECK, NEW YORK	
			GEAR ASS'Y, RIGHT ANGLE DRIVE	
			1.5:1	
		SRG	aa908	KAC 3-30-64
		TYPE & TEMPER	HEAT TREAT. SPEC.	DRAWN
				CHECKED
				FINAL APPROVAL
				A-3262 O
		FINISH & SPEC. NO.	ELEC. DES. APP.	MECH. DES. APP.

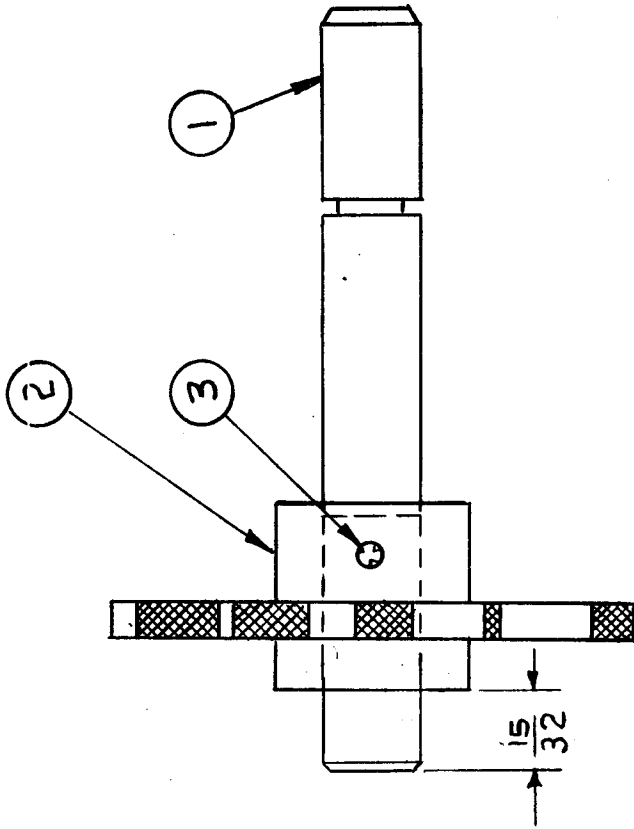
REQ. PER UNIT	USED ON			A-3263   0
	MODEL	ASS'Y. NO.	DATE	
1	GPT-200K(AK-394)	A-3259	10-3-63	



24	4	NTH1032BN12	NUT, HEX	
24	3	LWE 10MRN	WASHER, LOCK	
12	2	SM1032BN1.625	ROD, THREADED	E5102-E5107 E5112-E5117
1	1	PX-768	BOARD, TERMINAL MTG.	

		REQ. ITEM	PART NO.	F. BUDETTI	DESCRIPTION	SYMBOL
		STOCK SIZE		THE TECHNICAL MATERIEL CORP. MAMARONECK, NEW YORK		
O ORIGINAL RELEASE FOR PRODUCTION		3/6/64			TERMINAL MTG. BOARD ASS'Y	
SYM	DESCRIPTION	DATE	CH. NO.	DRAFTS	CHECKER	ENG. APP.
UNLESS OTHERWISE SPECIFIED DIMENSIONS ARE IN INCHES AND INCLUDE CHEMICALLY APPLIED OR PLATED FINISHES		SCALE	1/2" = 1"			
DECIMALS .X ± .05 .XX ± .01 .XXX ± .005		TOLERANCES		FRACTIONS ± 1/64 ANGLES ± 0° 30'	CODE A	
		TYPE & TEMPER	HEAT TREAT. SPEC.	DRAWN	CHECKED	FINAL APPROVAL
		FINISH & SPEC. NO.		ELEC. DES. APP.	MECH. DES. APP.	A-3263   0

REQ. PER UNIT	USED ON	DATE
	ASSY. NO.	
1	MODEL CHG-2A	8-8-63
A-3265		C

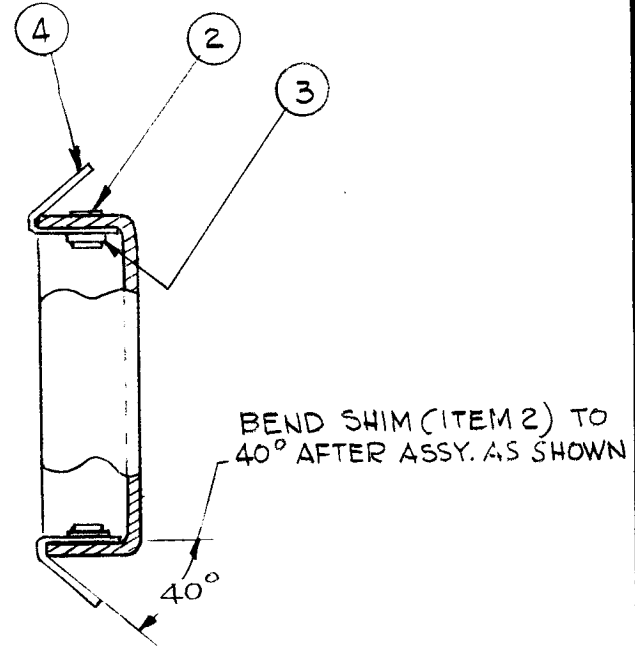
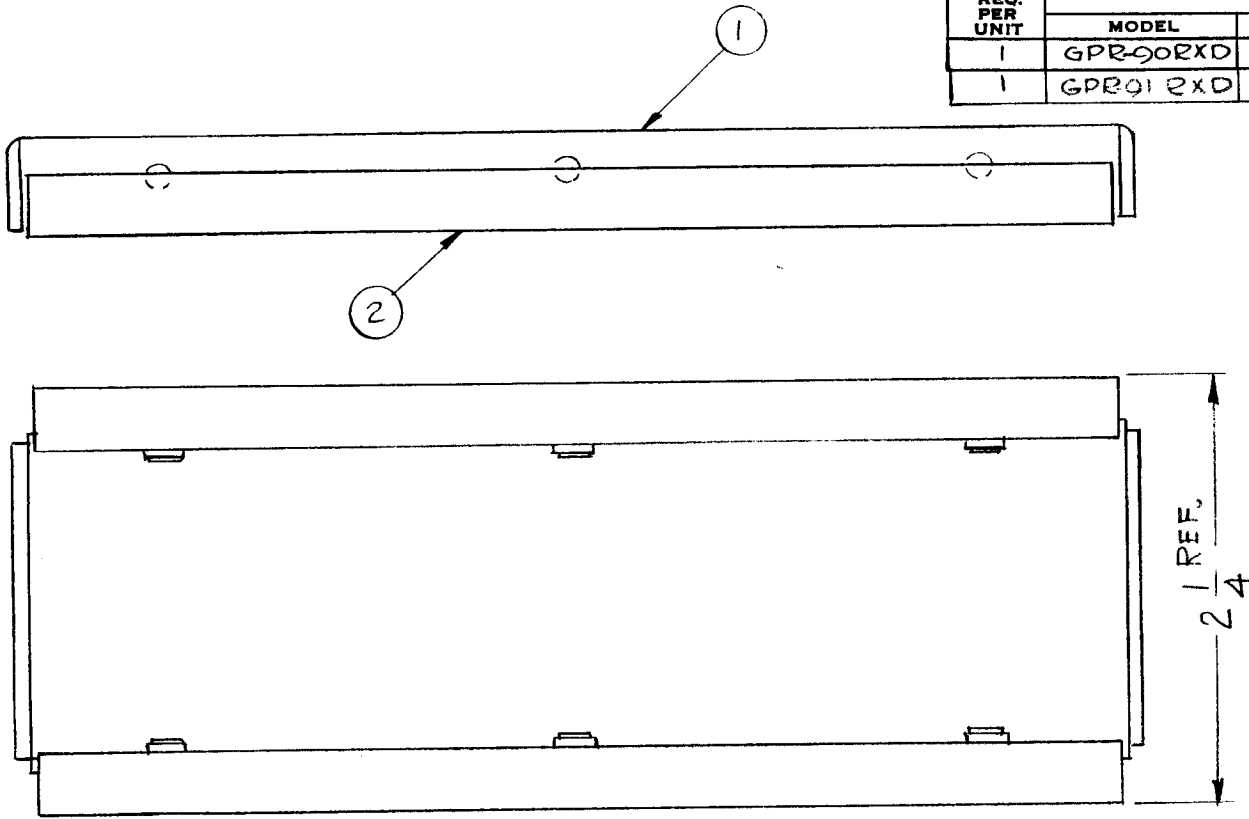


1	3	PN-114-3	GROOVE PIN	SYMBOL
1	2	PO-200	DETENT, SPROCKET	
1	1	PM-965	SHAFT, DETENT	
KRUY DESCRIPTION THE TECHNICAL MATERIEL CORP. MAMARONECK. NEW YORK				ASSEMBLY YIP DRAWN CHECKED TJK FINAL APPROVAL
DETENT WHEEL & SHAFT DETENT WHEEL & SHAFT				
REQ. ITEM PART NO. STOCK SIZE MATERIAL		TYPE & TEMPER. HEAT TREAT. SPEC. FINISH & SPEC. NO. ELEC. DES. APP. MECH. DES. APP.		

C	15/32 WAS 13/32	9.17.64	12401	ASB	SCALE	NONE
B	CHG. DIM. FR 1/8 TO 13/32	2-26-64	10944	A.M.	UNLESS OTHERWISE SPECIFIED DIMENSIONS ARE IN INCHES AND INCLUDE CHEMICALLY APPLIED OR PLATED FINISHES	CODE
A	UPDATED PICT.	12/16/65	10602	ASB	TOLERANCES	FRACTIONS ± 1/64 ANGLES ± 0° 30'
BY	DESCRIPTION	DATE	CH. NO.	DRAFTS	CHECKED	ENG. APP.
DECIMALS X ± .05 .XX ± .01 .XXX ± .005						

REQ. PER UNIT	USED ON	
	MODEL	ASS'Y. NO.
1	GPR90R2XD	9-14-63
1	GPR012XD	

A-3273



6	4	FW02HBR	WASHER, FLAT
6	3	EY-101-3	EYELET, ROLLED FLANGE
2	2	MS-3524	SHIM, COVER
1	1	MS-624	COVER, BMT

SYM	DESCRIPTION	DATE	CH. NO.	DRAFTS	CHECKER	ENG. APP.	REQ. ITEM	PART NO.	PRITCHARD DESCRIPTION	SYMBOL	
UNLESS OTHERWISE SPECIFIED DIMENSIONS ARE IN INCHES AND INCLUDE CHEMICALLY APPLIED OR PLATED FINISHES							SCALE	1:1			
DECIMALS .X ± .05 .XX ± .01 .XXX ± .005							TOLERANCES	FRACTIONS ± 1/64 ANGLES ± 0° 30'			
							STOCK SIZE	THE TECHNICAL MATERIEL CORP. MAMARONECK, NEW YORK			
							MATERIAL	COVER ASSEMBLY 2nd CONVERTER CHASSIS			
							TYPE & TEMPER	HEAT TREAT. SPEC.	DRAWN	CHECKED	FINAL APPROVAL
							FINISH & SPEC. NO.	ELEC. DES. APP.	MECH. DES. APP.	A-3273	

REQ. PER UNIT	USED ON			A3280	A
	MODEL	ASS'Y. NO.	DATE		
1	TTR-10/ AX418	A2786	10/28/64		

SYMBOL(S)	ITEM NO.	USED TO MOUNT	QTY
-----------	----------	---------------	-----

R1537	4		
R1541	5		
R1539	6		
R1538	7		
R1540	8		
S1505	9		
	10	SW340	1

3	11	WL100-8	WIRE, ELECTRICAL, BUSS, SIZE 24
1	10	TE111-2	TERMINAL, LUG-3/8D
1	9	SW340	SWITCH, ROTARY
1	8	RC20GF750J	RESISTOR, FIXED, COMPOSITION
1	7	RC20GF103J	RESISTOR, FIXED, COMPOSITION
1	6	RC20GF470J	RESISTOR, FIXED, COMPOSITION
1	5	RC20GF331J	RESISTOR, FIXED, COMPOSITION
1	4	RC20GF114J	RESISTOR, FIXED, COMPOSITION
1	3	PX104-9-022	INSULATION SLEEVING, SIZE 24-VIOLET
2	2	PX104-3-022	INSULATION SLEEVING, SIZE 24-RED
1		BS100	SOLDER, TIN ALLOY

REQ.	ITEM	PART NO.	DESCRIPTION				SYMBOL
			AALT.				
			THE TECHNICAL MATERIEL CORP. MAMARONECK. NEW YORK				
			MODE SWITCH ASSEMBLY				
A	IT. 7	WIRE RC20GF681J	6/2/64	14136	E	90B	
Ø	ORIGINAL RELEASE FOR PRODUCTION		11-2-64	Ø	9P		
SYM	DESCRIPTION	DATE	CH. NO.	DRAFTS	CHECKER	ENG. APP.	
UNLESS OTHERWISE SPECIFIED DIMENSIONS ARE IN INCHES AND INCLUDE CHEMICALLY APPLIED OR PLATED FINISHES			SCALE				
DECIMALS ± .05 ± .01 ± .005		TOLERANCES		FRACTIONS ± 1/64 ANGLES ± 0° 30'		CODE	
TYPE & TEMPER			HEAT TREAT. SPEC.		DRAWN	CHECKED	FINAL APPROVAL
FINISH & SPEC. NO.			ELEC. DES. APP.		MECH. DES. APP.		A3280

REQ. PER UNIT	USED ON			A-3283
	MODEL	ASS'Y. NO.	DATE	
1	GPS-2		9-14-63	

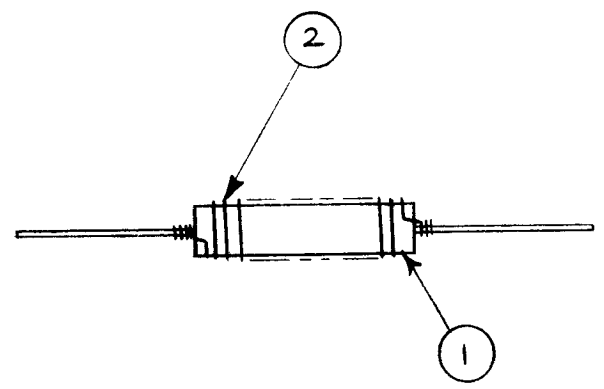
X	18	FA-100	CLOTH, GRAY, SPEAKER
1	17	CA-259	CABLE
4	16	SCFP0632BN20	SCREW, MACHINE
4	15	SCFP0632BN8	SCREW, MACHINE
4	14	SCBP1082BN18	SCREW, MACHINE
4	13	NTH1032BN10	NUT, HEX
12	12	NTH0632BN8	NUT, HEX
4	11	LWE10MRN	LOCKWASHER, EXTERNAL
8	10	LWE06MRN	LOCKWASHER, EXTERNAL
4	9	FW10LRN	WASHER, FLAT
4	8	FW06LRN	WASHER, FLAT
4	7	FS-112	FASTENER ( MODIFIED)
1	6	CU-102-2	CLAMP
1	5	WD-122	PLATE, SPEAKER
1	4	PX-277	MOUNT, SPEAKER CASE
1	3	MS-949	CABINET
1	2	LS-100	SPEAKER
1	1	IM-160	BAFFLE

								REQ. ITEM	PART NO.	R. HAY	DESCRIPTION	SYMBOL	
									STOCK SIZE	THE TECHNICAL MATERIEL CORP. MAMARONECK. NEW YORK			
										FINAL ASSEMBLY			
										GPS-2			
SYM	DESCRIPTION	DATE	CH. NO.	DRAFTS	CHECKER	ENG. APP.		MATERIAL					
UNLESS OTHERWISE SPECIFIED DIMENSIONS ARE IN INCHES AND INCLUDE CHEMICALLY APPLIED OR PLATED FINISHES		SCALE	H										
DECIMALS .X ± .05 .XX ± .01 .XXX ± .005	TOLERANCES	FRACTIONS ± 1/64 ANGLES ± 0° 30'	CODE					TYPE & TEMPER	HEAT TREAT. SPEC.	DRAWN	CHECKED	FINAL APPROVAL	
											9/17/63	BP	
								FINISH & SPEC. NO.	ELEC. DES. APP.	MECH. DES. APP.		A-3283	

REQ. PER UNIT	USED ON			A-3287
	MODEL	ASSY. NO.	DATE	
1	GPR-92	A-2510	9/10/63	

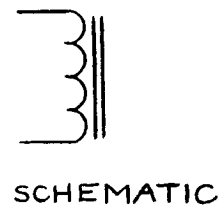
**WINDING DATA**

- 1- WIND 47 TURNS OF ITEM 2 ON ITEM 1,
- 2- STRIP ENDS & WRAP AROUND AXIAL LEADS OF CORE, SECURING IT WITH ITEM 3.
- 3- CHECK R, L & Q
- 4- SATURATE COIL ASSY WITH ITEM 4, BAKE AT 215°F FOR 1/2 HOUR.



**TEST DATE**

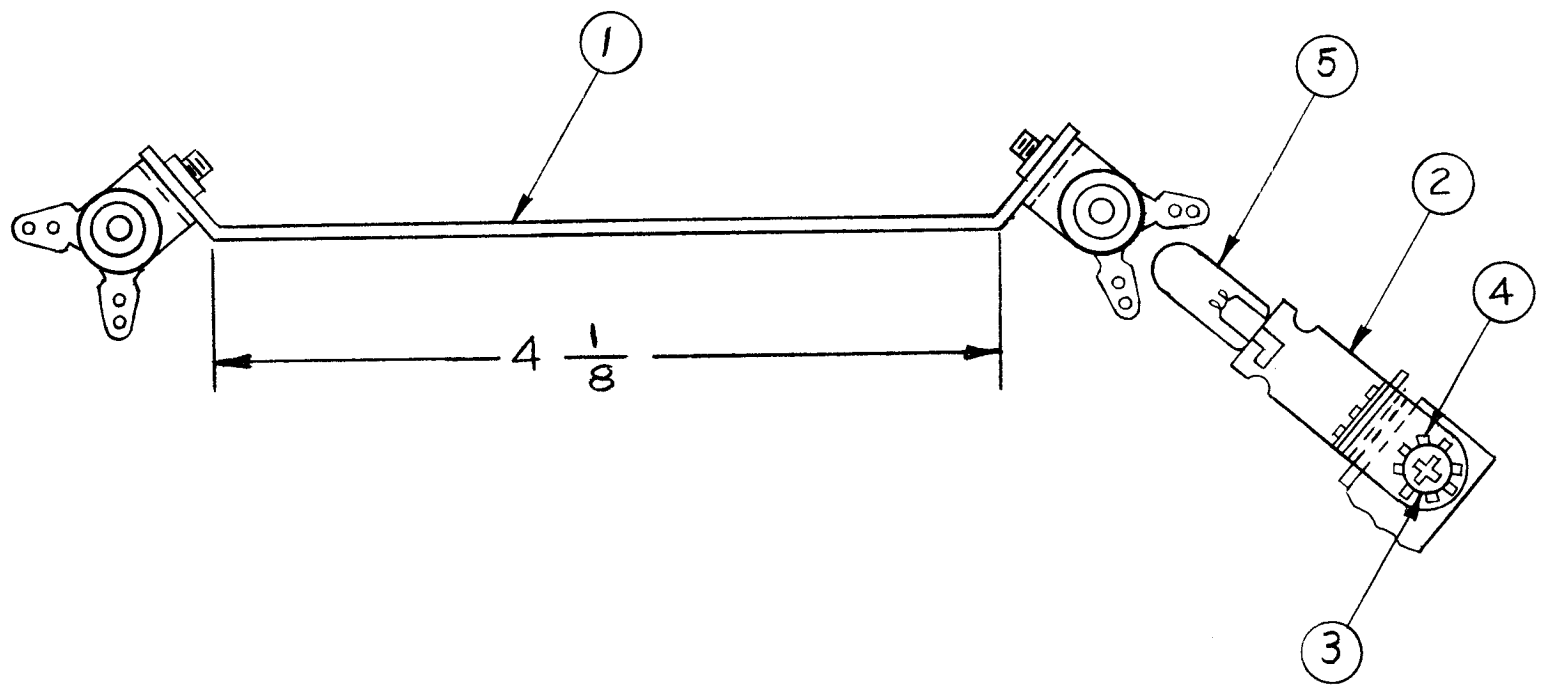
Q = 55 ± 10%  
 FREQ = 2.52 MC  
 R = 0  
 L = 17 μh ± 20%



5			
- 4	GL-104-2	RESIN, SYNTHETIC	
- 3	BS-100	SOLDER, SOFT	
- 2	WI-123-30	MAGNET WIRE, HEAVY	
1 1	CI-114	CORE, POWDERED IRON	

REQ. ITEM	PART NO.	M. GELLMAN	DESCRIPTION	SYMBOL		
SYMBOL-L109		THE TECHNICAL MATERIEL CORP. MAMARONECK. NEW YORK				
STOCK SIZE		CL-322 ASSEMBLY				
MATERIAL						
SYM	DESCRIPTION	DATE	CH. NO.	DRAFTS	CHECKER	ENG. APP.
	UNLESS OTHERWISE SPECIFIED DIMENSIONS ARE IN INCHES AND INCLUDE CHEMICALLY APPLIED OR PLATED FINISHES	SCALE	NONE			
DECIMALS	TOLERANCES	FRACTIONS	CODE			
.X ± .05		± 1/64				
.XX ± .01		ANGLES				
.XXX ± .005		± 0° 30'				
FINISH & SPEC. NO.		ELEC. DES. APP.	MECH. DES. APP.	A-3287		

REQ. PER UNIT	USED ON			A 3288	B
	MODEL	ASS'Y. NO.	DATE		
2	GPR 92		4-23-64		



2	5	BI101-47	LAMP, INCAND., MIN., BAYONET BASE
2	4	LWE06MRN	WASHER, LOCK, EXTERNAL
2	3	SCBP0632BN5	SCREW, MACHINE
2	2	TS107-2	LAMP HOLDER
2	1	MS3718	BRACKET, MOUNTING
REQ. ITEM	PART NO.		GELLMAN DESCRIPTION
— // —			THE TECHNICAL MATERIEL CORP.
STOCK SIZE			MAMARONECK, NEW YORK
— // —			DIAL LIGHT ASSEMBLY
MATERIAL			
— // —		— // —	A. MARINO @ 5/4/64
TYPE & TEMPER	HEAT TREAT. SPEC.	DRAWN	CHECKED
— // —			FINAL APPROVAL
FINISH & SPEC. NO.		ELEC. DES. APP.	MECH. DES. APP.
			A3288
			B

B	REVISED & REDRAWN	4/23/64	11276	A.M.	@	W6
SYM	DESCRIPTION	DATE	CH. NO.	DRAFTS	CHECKER	ENG. APP.
UNLESS OTHERWISE SPECIFIED DIMENSIONS ARE IN INCHES AND INCLUDE CHEMICALLY APPLIED OR PLATED FINISHES		SCALE	— // —			
DECIMALS	TOLERANCES	FRACTIONS	CODE			
.x ± .05		± 1/64	A			
.xx ± .01		ANGLES				
.xxx ± .005		± 0° 30'				



SYMBOL(S)	ITEM NO.	USED TO MOUNT	QTY	USED ON				
				REQ. PER UNIT	MODEL	ASS'Y. NO.	DATE	
				1	MSR-9	10/1/64	A3290	A
P4	6	A2725 to A3299	4					
		A3291 to A3299	5					
		A3292 to A3299	5					
	10							
	11	A2725 to A3299	4					
		A3291 to A3299	5					
		A3292 to A3299	5					
	12	A3291 to A3292	1					
		A3291 to A2725	1					
	13	A2725 to A3299	4					
		A3292 to A3299	2					
	14	A3291 to A3292	3					
		A3291 to A2725	3					
	15	A3292 to A3299	3					
P1	16							
		LOOSE ITEM	1	16	UG260*/U		CONNECTOR, PLUG-BNC	
			3	15	SCFP0832BN6		SCREW, MACHINE	
			6	14	SCBP0832BN7		SCREW, MACHINE	
			6	13	SCBP0832BN6		SCREW, MACHINE	
			2	12	PM236-2B		BAR, PNL LKG	
			14	11	NTH0832BN10		NUT, PLAIN, HEX	
		LOOSE ITEM	1	10	MS3106A14S 2S		CONNECTOR, PLUG, FEMALE	
		LOOSE ITEM	1	9	MS3057-6		CLAMP, CABLE, EL CONNECTOR	
			1	8	MS1327		COVER, BOTTOM	
			1	7	MS1323		COVER, TOP	
			14	6	LWE08MRN		WASHER, LOCK, EXTERNAL	
		LOOSE ITEM	1	5	CA1079		CABLE ASSEMBLY, POWER, AC	W1
			1	4	A3299		CHASSIS ASSEMBLY, MAIN	
			1	3	A3292		PLATE ASSEMBLY, LEFT SIDE	
			1	2	A3291		PANEL ASSEMBLY, FRONT	
			1	1	A2725		POWER SUPPLY, ASSEMBLY	

REQ.	ITEM	PART NO.	POSE	DESCRIPTION	SYMB	L
				THE TECHNICAL MATERIEL CORP. MAMARONECK. NEW YORK		
				MSR-9 FINAL ASSEMBLY		
				MATERIAL		
				FS 10-2-64	L. Gabriel	RJC
				ENG COORD	10-2-64	
				TYPE & TEMPER	HEAT TREAT. SPEC.	FINAL APPROVAL
				DRAWN	CHECKED	
				FINISH & SPEC. NO.		ELEC. DES. APP. MECH. DES. APP.
				A3290		A

SYMBOL(S)	ITEM NO.	USED TO MOUNT	QTY
-----------	----------	---------------	-----

REQ. PER UNIT	USED ON			A3292	Ø
	MODEL	ASS'Y. NO.	DATE		
	1	MSR-9	A3290		

3	FS102-1	8
5	FS102-1	8
6	FS102-1	8
7	A3298-4	2

2	7	SCFP0632BN6	SCREW, MACHINE
8	6	SCFP0348BN6	SCREW, MACHINE
8	5	NTH0348BN6	NUT, PLAIN, HEX
1	4	MS1000	PLATE, SIDE, LEFT
8	3	LWS03MRN	WASHER, LOCK, SPLIT
4	2	FS102-1	LOCKSPRING
1	1	A3298-4	TERMINAL BOARD, FINAL ASSEMBLY, NO. 5

SYM	DESCRIPTION	DATE	CH. NO.	DRAFTS	CHECKER	ENG. APP.	REQ.	ITEM	PART NO.	POSE	DESCRIPTION	SYMB L		
Ø	ORIGINAL RELEASE FOR PRODUCTION	10-7-64	Ø	92										
										THE TECHNICAL MATERIEL CORP. MAMARONECK. NEW YORK				
										STOCK SIZE				
										PLATE ASSEMBLY, LEFT SIDE				
										MATERIAL				
										1610-6-64	R. Sobel	Ø		
										ENG COORD	10-6-64			
										TYPE & TEMPER	HEAT TREAT. SPEC.	DRAWN	CHECKED	FINAL APPROVAL
										A3292				
										FINISH & SPEC. NO.	ELEC. DES. APP.	MECH. DES. APP.	Ø	

UNLESS OTHERWISE SPECIFIED  
DIMENSIONS ARE IN INCHES AND INCLUDE  
CHEMICALLY APPLIED OR PLATED FINISHES

DECIMALS  
.X ± .05  
.XX ± .01  
.XXX ± .005

FRACTIONS  
± 1/64  
ANGLES  
± 0° 30'

TOLERANCES