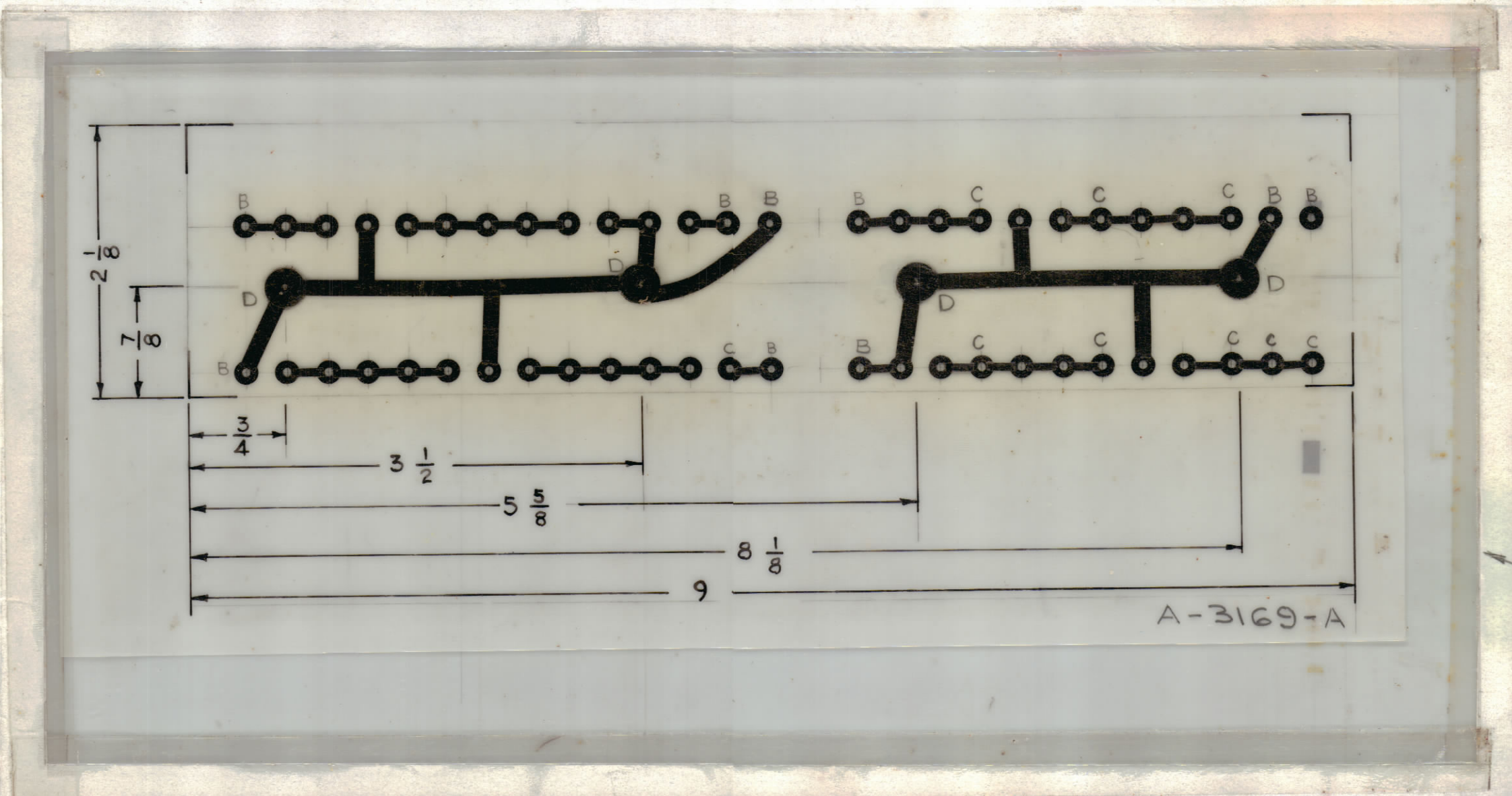


REVISIONS						
ZONE	SYM	DESCRIPTION	DATE	E.M.N. NO.	DRAFT	CHKD
-	A	SEE SHEET 2 OF 2	1/9/69	10JG1		



ORIGINAL ARTWORK IN PROTECTIVE JACKET. MAY BE REMOVED FOR MANUFACTURING PURPOSES.

HOLE	DIAMETER	PAD. DIA.	REQ'D
UNMARKED	.059	.156	32 *
B	.073	.156	9
C	.093	.156	9
D	.189	.312	4

* ALL UNMARKED HOLES TO BE PLATED -THRU:
 MIN. CU PLATING THICKNESS AT ANY POINT
 WITHIN THE HOLE = .0015
 MIN. SOLDER-PLATE THICKNESS .0008 PER
 TMC SPECIFICATION S-735
 FINISHED DIA. OF PLATED-THRU HOLES
 TO BE .050 MIN.
 BASE MATERIAL: EPOXY G-10, 3/32 THK.
 COPPER FOIL : 1 OUNCE , ONE SIDE

NOTES

Q'TY./UNIT	MODEL USED ON	ASSY. NO.
1	LFA-4	

SCALE: 1:1
 CODE: A

THE CONTENTS OF THIS DRAWING ARE THE EXCLUSIVE PROPERTY OF THE TECHNICAL MATERIEL CORP. ITS UNAUTHORIZED USE OR REPRODUCTION IN WHOLE OR IN PART IS STRICTLY FORBIDDEN.

REQ'D.	ITEM	PART NUMBER	DESCRIPTION	SYMBOL
O. POSE LIST OF MATERIAL				
MATERIAL		THE TECHNICAL MATERIEL CORP. MAMARONECK, NEW YORK		
FINISH		TITLE PRINTED CKT BOARD ASSY		
UNLESS OTHERWISE SPECIFIED DIMENSIONS ARE IN INCHES AND INCLUDE CHEMICALLY APPLIED OR PLATED FINISHES		DRAWN G.D.L	DATE 6-5-63	FINAL APPROVAL JFH
DECIMALS X ± .05 XX ± .01 XXX ± .005		CHECKED JDe	DATE 6-6-63	DATE 6-11-63
FRACTIONS ± 1/64 ANGLES ± 0° 30'		ELECT. DES. JDe	DATE	DATE
TOLERANCES		MECH. DES. JDe	DATE	DATE
			SHEET 1 OF 2	REV. LTR. A

A-3169
A