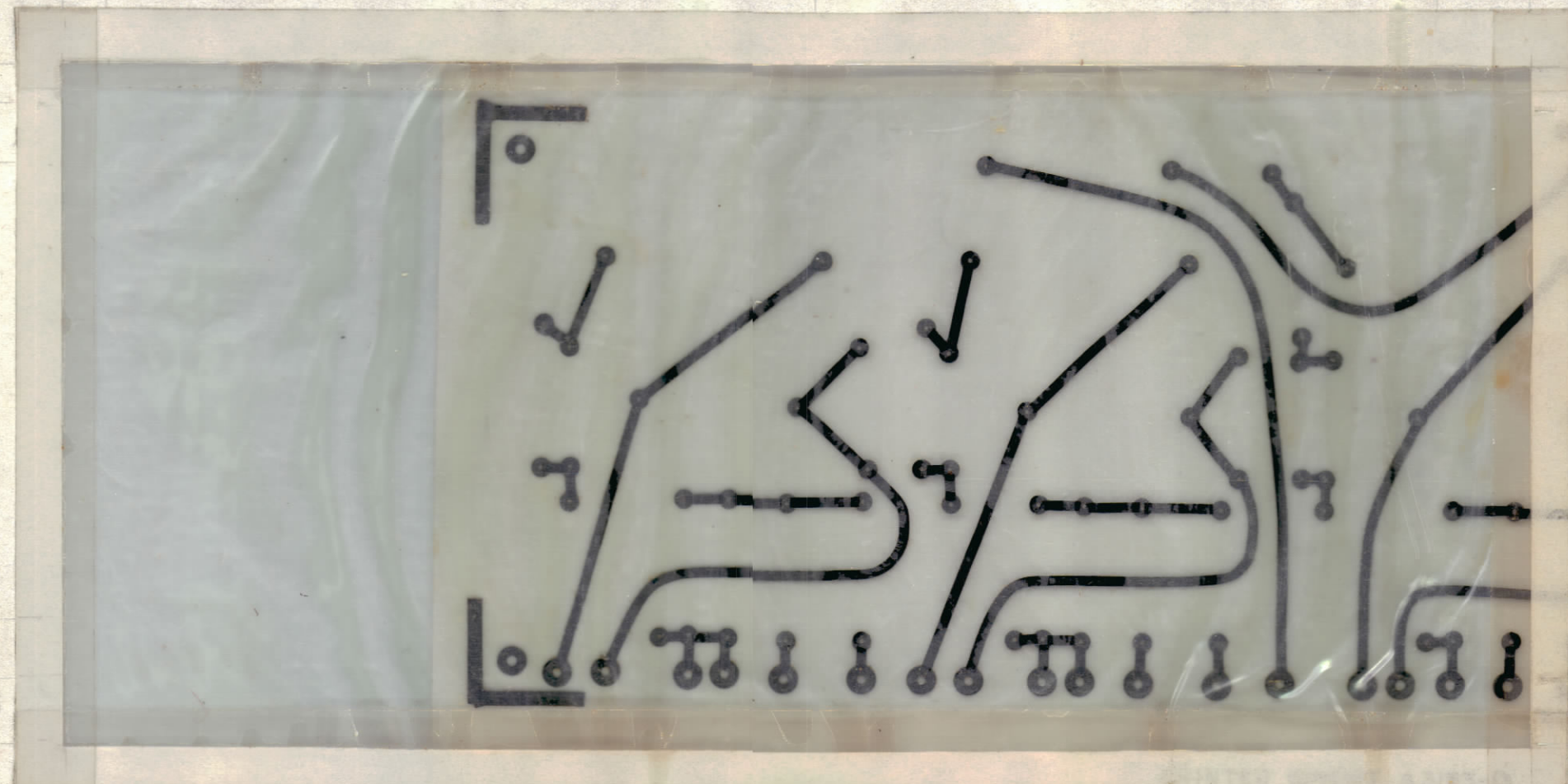


REVISIONS					
ZONE	SYM	DESCRIPTION	DATE	E.M.N. NO.	APPD
	A	BOARD COMPLETELY REVISED	5-23-64	11442	NP
C4	B	ART WORK MODIFIED	8-15-64	11504	WBS
	C	CLERICAL CHANGE	3/5/65	#	CL
	D	SEE SHEET 2 OF 2	10-21-66	17019	G.D.L.



ORIGINAL ARTWORK TO BE REMOVED FROM PROTECTIVE POCKET WHEN PHOTOGRAPHING.

HOLE & PAD SPECIFICATIONS			
HOLE	DIA.	PAD DIA.	REQ'D
UNMARKED	.060	.120	64
A	.186 ^{+0.000} _{-0.003}	NONE	4
B	.078±.002	.160	18
C	.45 DRILL	NONE	3

A 3153-1 ETCHING

~ OTHER SPECIFICATIONS ~

CONDUCTOR: NOMINAL WIDTH ~ .062
 MINIMUM WIDTH ~ .040
 MINIMUM SPACING ~ .031
 NO FILLETS REQUIRED

COPPER FOIL: 2 OZ. ~ ONE SIDE
 PLATING: MINIMUM THICKNESS ~ .0008
 TIN LEAD, ALL CONDUCTORS

BASE MAT'L: EPOXY G-10 3/32 THK.
 FINISH: NATURAL ~ SEMI-GLOSS

NOTES:

- CONDUCTORS MAY BE RE-ROUTED AND PADS FLATTED TO PROVIDE MINIMUM SPACING.
- LETTER DESIGNATIONS AS SHOWN ON CIRCUIT DENOTE HOLE SIZE "DO NOT PRINT".
- HOLE ARE TO BE PLATED THRU AND TO HAVE A MINIMUM COPPER THICKNESS OF .0015 AT ANY POINT WITHIN THE HOLE. THE SOLDER PLATE THICKNESS MUST BE A MINIMUM OF .0008 AS PER TMC SPEC. S-735. THE FINISHED DIA OF THE PLATED HOLE MUST BE A MINIMUM OF .050.

THE ORIGINAL ART WORK TO BE SUPPLIED BY TMC FOR PHOTOGRAPHING (SCALE 1:1)



A 3153-2 MACHINING
 DO NOT SCALE, USE ARTWORK FOR HOLE LOCATION AND EDGES.

NOTES

1	TTR-10	AX-413
Q'TY./UNIT	MODEL USED ON	ASS'Y. NO.
SCALE	CODE	
1:1	A	

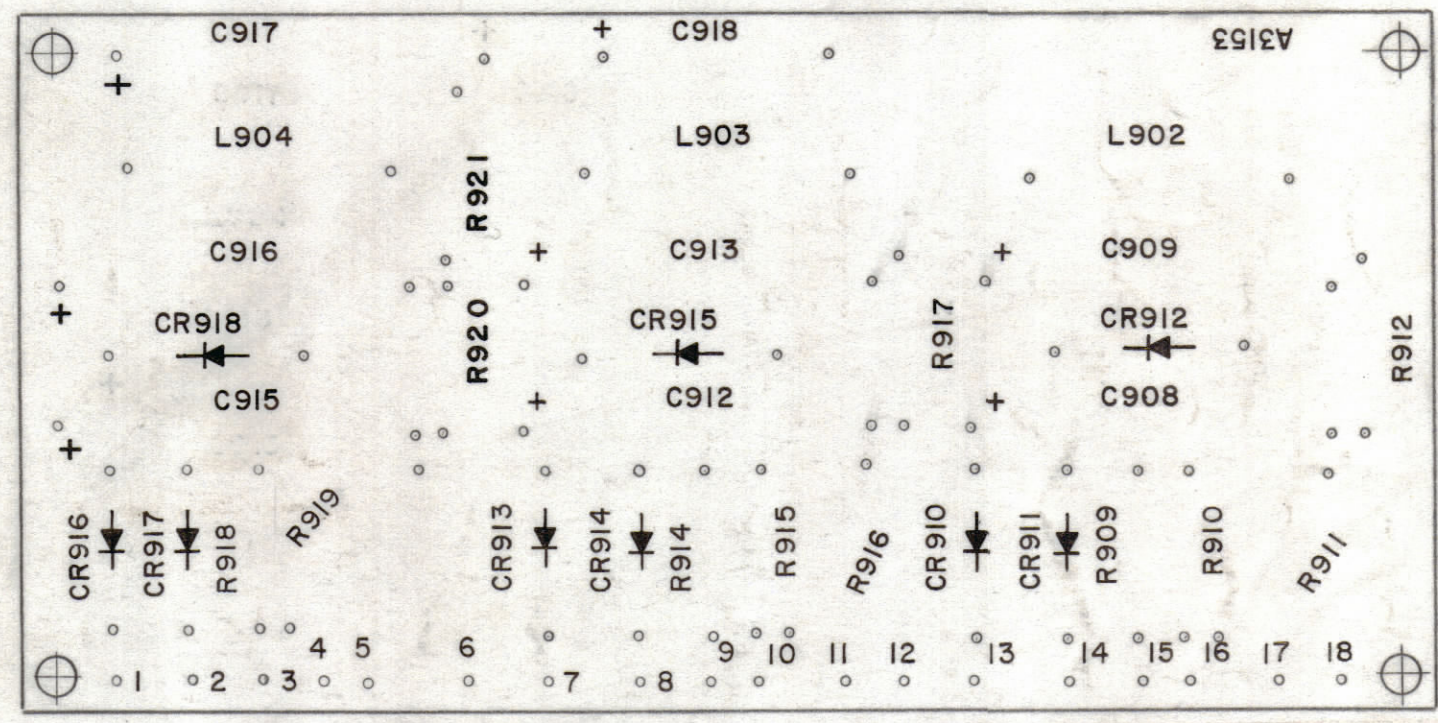
THE CONTENTS OF THIS DRAWING ARE THE EXCLUSIVE PROPERTY OF THE TECHNICAL MATERIEL CORP. ITS UNAUTHORIZED USE OR REPRODUCTION IN WHOLE OR IN PART IS STRICTLY FORBIDDEN.

REQ'D.	ITEM	PART NUMBER	DESCRIPTION	SYMBOL
LIST OF MATERIAL				
MATERIAL		THE TECHNICAL MATERIEL CORP. MAMARONECK, NEW YORK		
FINISH		TITLE PRINTED ELECTRICAL CIRCUIT TTR-10		
UNLESS OTHERWISE SPECIFIED DIMENSIONS ARE IN INCHES AND INCLUDE CHEMICALLY APPLIED OR PLATED FINISHES		DRAWN ADW	DATE 7-5-63	FINAL APPROVAL BP
DECIMALS .X ± .05 .XX ± .01 .XXX ± .005		CHECKED JLH	DATE 7-5-63	DATE
FRACTIONS ± 1/64 ANGLES ± 0° 30'		ELECT. DES. RON KOHN	DATE 7-5-63	DATE
TOLERANCES		MECH. DES. RON KOHN	DATE 7-5-63	DATE
SHEET 1 OF 2				REV. LTR.

A 3153 D

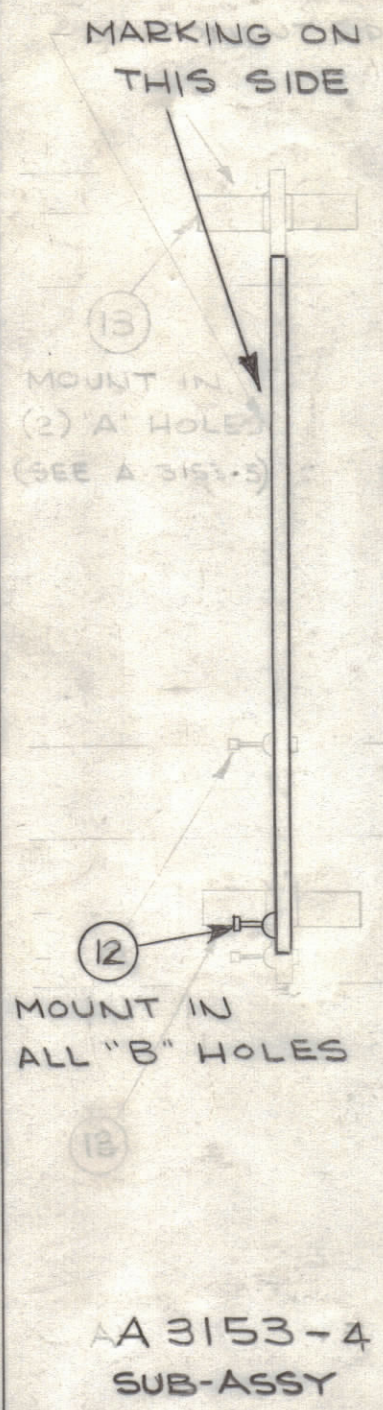
A

REVISIONS						
ZONE	SYM	DESCRIPTION	DATE	E.M.N. NO.	DRAFT	CHKD
	A	BOARD COMPLETELY REVISED	5-22-64	11442	NP	
	B	A 3153-5 NOTE #* ON BOARD ADD, IT.1 WAS 10REQ. IT.7 WAS 4REQ & SYM R918 ADD, IT.8 RC 206GF153J DELE, IT.9 RC 206GF 823K DELE, IT.16 RC 32 GF 100K DELE., SYM. UPD.	8.15.64	11504	hjb	NO. TRK
	C	CLERICAL CHANGE	7-5-65	#		
	D	ITEM 10 WAS RC32GF101K & ITEM 11 RC32GF102K	10-21-66	17019	CDL	

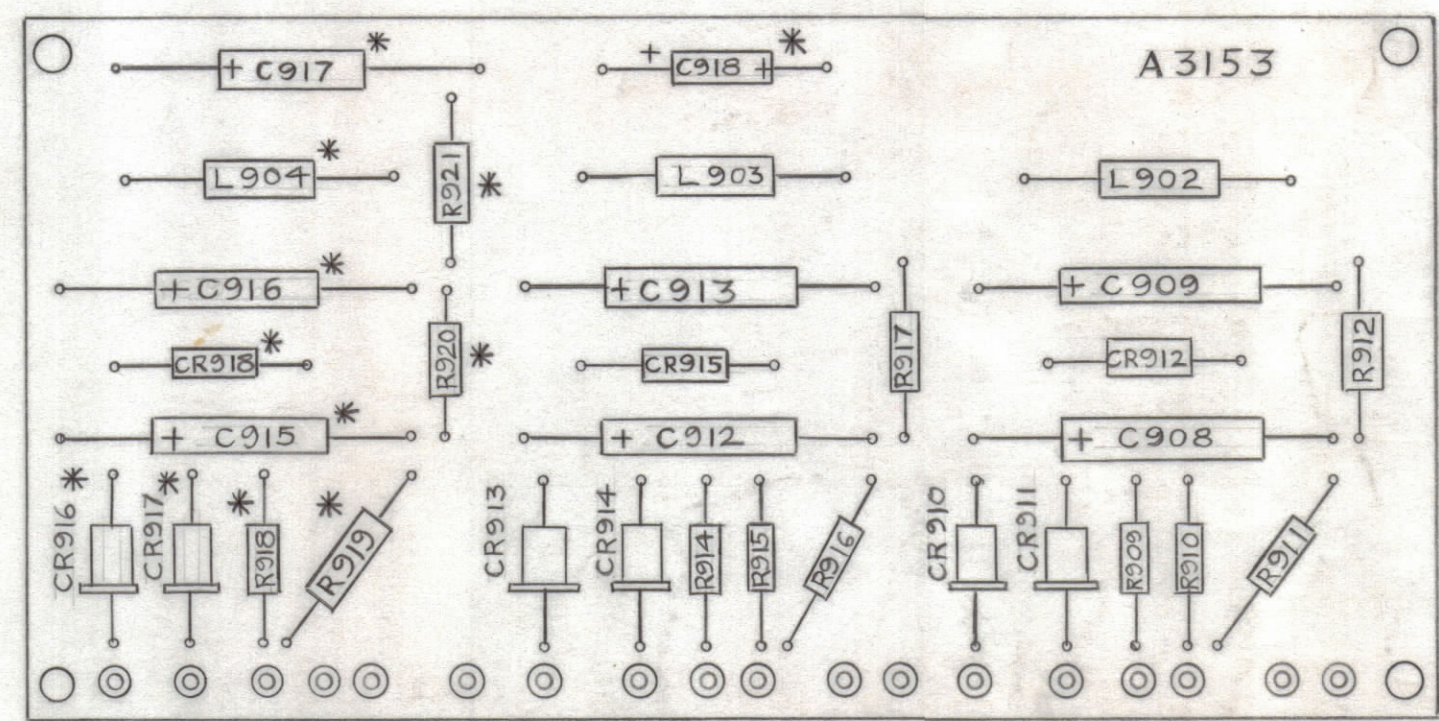
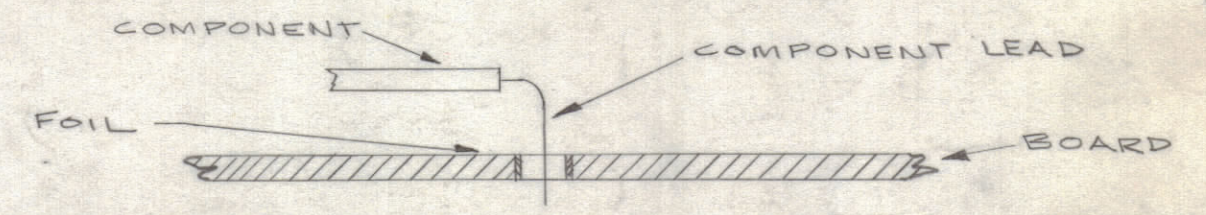


~ UNLESS OTHERWISE SPECIFIED ~
 1. ALL LETTERING TO BE 3/32 HIGH WHITE GOTHIC.
 MARKING PROCESS: PER TMC SPEC. 5727.
 LOCATE APPROX. AS SHOWN.

A 3153-3 MARKING NG
 SCALE: FULL



- ~ ASSEMBLY NOTICE ~
1. TO MOUNT COMPONENTS INSERT LEAD THROUGH PLATED THRU HOLES AND BEND ABOUT 1/16 OF LEAD OVER COPPER FOIL AS SHOWN.
 2. APPLY HEAT AND SOLDER TO LEAD AND FOIL ~ CAUTION ~ TOO MUCH HEAT WILL CAUSE FOIL TO SEPARATE FROM THE BOARD.
 3. CLEAN AND INSPECT AS PER 5676.



A 3153-5 FINAL ASSY. (LESS COMP. MARKED * C918, C917, C916, C915, CR918, CR916, CR917, R918, R919, R920, R921, L901)

A 3153-6 FINAL ASSY.

ASSY. STORAGE	Q'TY./UNIT	MODEL USED ON	ASSY. NO.
A3153-6	1	STE-1	A3753
A3153-5	1	STR-1	A3659
A3153-5	1	SMR-1	A3669
A3153-6	1	SME-1	A3770
A3153-6	1	TTR-10	AX-413

NOTES
 THE CONTENTS OF THIS DRAWING ARE THE EXCLUSIVE PROPERTY OF THE TECHNICAL MATERIEL CORP. ITS UNAUTHORIZED USE OR REPRODUCTION IN WHOLE OR IN PART IS STRICTLY FORBIDDEN.

REQ'D.	ITEM	PART NUMBER	DESCRIPTION	SYMBOL
	16	RC32GF100K	RESISTOR, FIXED, COMPOSITION	
X	15	BS-1005-50	SOLDER, SOFT, EUTECTIC	
1	14	CE-105-25-50	CAPACITOR, FIXED, ELECTROLYTIC	C918
2	13	TE-1108-16	STANDOFF, RIVET TYPE	
18	12	RTE-127-3	TERMINAL, STUD	B
3	11	RC 326F102J	RESISTOR, FIXED, COMPOSITION	C919, 920
4	10	RC 326F101J	RESISTOR, FIXED, COMPOSITION	C913
1	9	RC206GF823K	RESISTOR, FIXED, COMPOSITION	C913
3	8	RC206GF153J	RESISTOR, FIXED, COMPOSITION	C913
5	7	RW123-100J K	RESISTOR, FIXED, WIREWOUND	
3	6	CL-101-2	COIL, RF, 1mh	
3	5	CE-105-20-100	CAPACITOR, FIXED, ELECTROLYTIC	C915, 916, 917
4	4	CE-105-100-25	CAPACITOR, FIXED, ELECTROLYTIC	
1	3	1N3033B	SEMI-CONDUCTOR DEVICE, DIODE, ZENER	CR918
2	2	1N3022B	SEMI-CONDUCTOR DEVICE, DIODE, ZENER	CR912, CR915
6	1	1N547	SEMI-CONDUCTOR DEVICE, DIODE	

KOHN LIST OF MATERIAL E3037-115			
MATERIAL		THE TECHNICAL MATERIEL CORP. MAMARONECK, NEW YORK	
FINISH		TITLE	
		FINAL ASSY, CIRCUIT BOARD	
UNLESS OTHERWISE SPECIFIED DIMENSIONS ARE IN INCHES AND INCLUDE CHEMICALLY APPLIED OR PLATED FINISHES	DRAWN	DATE	FINAL APPROVAL
	DATE	DATE	DATE
DECIMALS	ELECT. DES.	DATE	A3153
X ± .05	MECH. DES.	DATE	D
.XX ± .01		DATE	
.XXX ± .005		DATE	
TOLERANCES		SHEET	2 OF 2
FRACTIONS ± 1/64		REV. LTR.	
ANGLES ± 0° 30'			

A3153