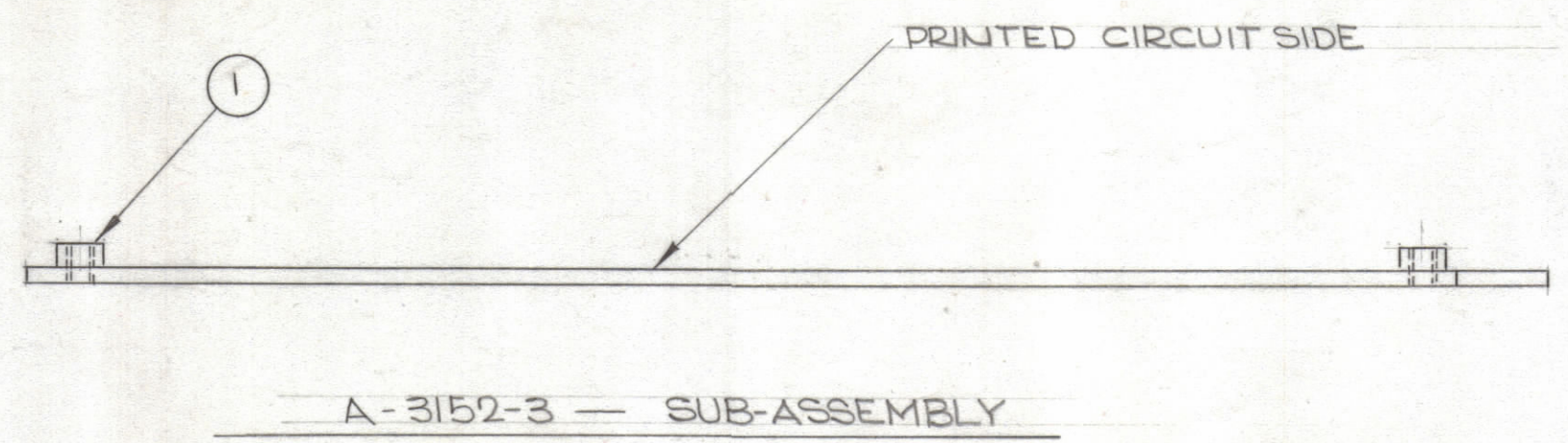
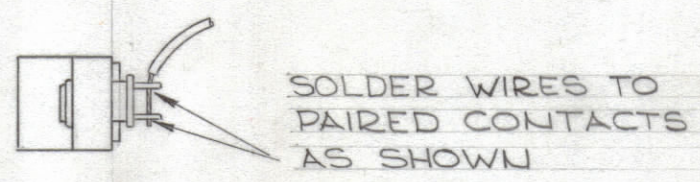
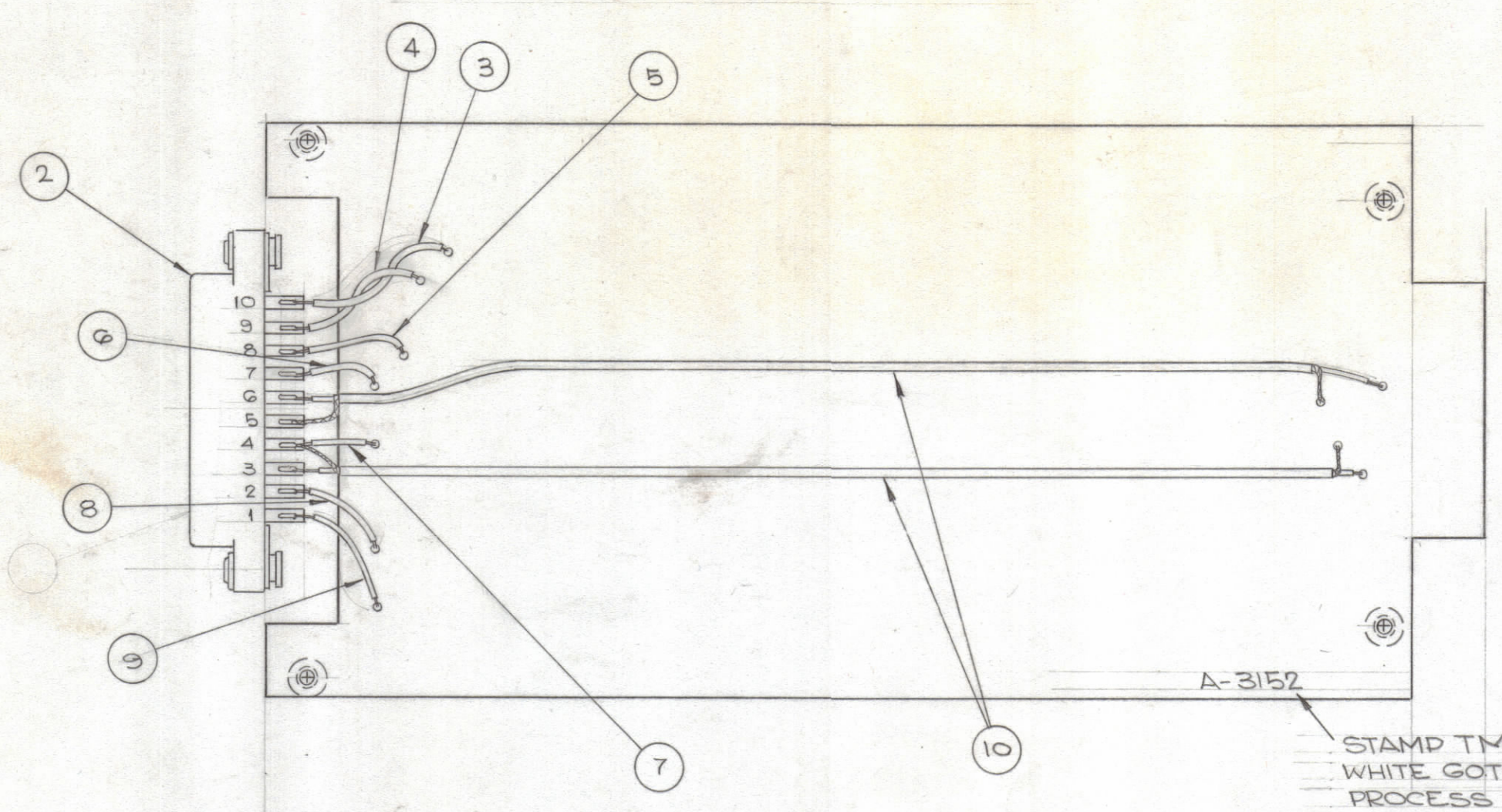


REVISIONS							
ZONE	SYM	DESCRIPTION	DATE	E.M.N. NO.	DRAFT	CHKD	APPD
	A	CLERICAL CHANGE	9.1.64	-	WP		
	B	SEE SHEET 1 OF 2 REV. "B"	7-18-65	13622	24		
	C	SEE SHEET 1	9-5-72	20868	GE		



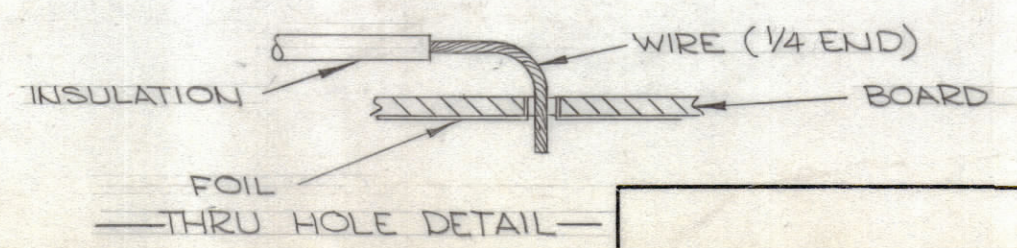
TWIST ITEMS ③ & ④ AS SHOWN



— CONNECTOR WIRING DETAIL —

~ ASSEMBLY NOTES ~

1. ON SHIELDED WIRES, BREAK OUT SHIELDING 3/4 IN. AND MOUNT AS FOLLOWS.
2. TO MOUNT WIRES, STRIP BACK INSULATION 3/8 IN. ON ONE END AND 1/4 IN. ON THE OTHER END. SOLDER 3/8 END TO CONNECTOR AND INSERT 1/4 IN. END THROUGH PLATED "THRU HOLE" AS SHOWN.
3. APPLY HEAT & SOLDER TO WIRE & FOIL ~ CAUTION ~ TOO MUCH HEAT WILL CAUSE FOIL TO SEPARATE FROM BOARD
4. CLEAN & INSPECT AS PER S-676.



NOTES

QTY./UNIT	TTR-10	AX-436
SCALE	MODEL USED ON	ASSY. NO.
DO NOT SCALE	CODE A	

THE CONTENTS OF THIS DRAWING ARE THE EXCLUSIVE PROPERTY OF THE TECHNICAL MATERIEL CORP. ITS UNAUTHORIZED USE OR REPRODUCTION IN WHOLE OR IN PART IS STRICTLY FORBIDDEN.

REQ'D.	ITEM	PART NUMBER	DESCRIPTION	SYMBOL
X	11	BS 100	SOLDER, TIN ALLOY	
15"	10	RG-174/U	CABLE, R.F.	
1"	9	MWC22(7)UG	WIRE, INSULATED	BLU
1"	8	U5		GRN
1"	7	U90		WH/BLK
1"	6	U96		WH/BLU
1"	5	U4		YEL
1 1/2"	4	U2		RED
1 1/2"	3	MWC22(7)U0	WIRE, INSULATED	BLK
1	2	JJ-287-20	CONNECTOR, RECEPTACLE	
4	1	TE-164-7	SPACER, RIVET TYPE	

KOHN LIST OF MATERIAL			
MATERIAL		THE TECHNICAL MATERIEL CORP. MAMARONECK, NEW YORK	
FINISH		TITLE PRINTED CIRCUIT BOARD ASSY EXTENSION MODULE	
DRAWN	DATE	FINAL APPROVAL	DATE
Checked	9-27-63	BP	
CHECKED	10/1/63		
ELECT. DES.	DATE	A-3152	
RON KOHN	10/16/63	C	
MECH. DES.	DATE	SHEET 2 OF 2	REV. LTR.
RON KOHN	10/16/63		

A-3152 C