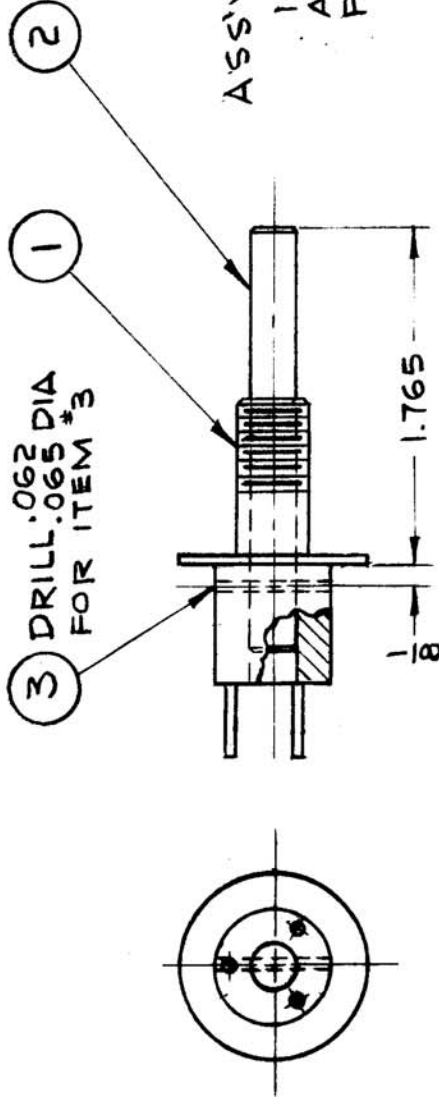


THE CONTENTS OF THIS DRAWING ARE THE EXCLUSIVE PROPERTY OF THE TECHNICAL MATERIEL CORP. ITS UNAUTHORIZED USE FOR REPRODUCTION IN WHOLE OR IN PART IS STRICTLY FORBIDDEN.

| | | |
|---------------|-------|-----------|
| REQ. PER UNIT | MODEL | USED ON |
| 1 | HFR-1 | ASBY. NO. |
| | | DATE |
| | | 3-28-63 |

A-3135

B



ASSY NOTES:
 INSERT SHAFT ITEM #2 INTO CLUTCH AS SHOWN, AND DRILL THRU & PIN WITH ITEM #3

NOTE :

SLIP CLUTCH ITEM #1 SHOWN WITHOUT SPRING, NUTS & WASHERS FOR CLARITY.

| REQ. ITEM | DESCRIPTION | PART NO. | SYMBOL |
|-----------|-------------|---------------|------------------|
| 1 | 3 | PN 59-062-9 | PIN, SPRING |
| 1 | 2 | PM1051RF2.250 | SHAFT, PRECISION |
| 1 | 1 | PO 247 | CLUTCH, SLIP |

| | |
|--|--------------------|
| THE TECHNICAL MATERIEL CORP. MAMARONECK. NEW YORK | |
| CLUTCH SLIP, ASSY | |
| DRAWN | CHECKED |
| TYPE & TEMPER | HEAT TREAT. SPEC. |
| MATERIAL | FINISH & SPEC. NO. |
| ELEC. DES. APP. MECH. DES. APP. | |

| | | | | | |
|---------------------------------------|---------|---------|--------|---------|-----------|
| ITEM 2 WAS PM804-1 | DATE | CH. NO. | DRAFTS | CHECKER | ENG. APP. |
| ON ITEMS (1)(2) & (3), QUANTITY ADDED | 6/30/64 | 11669 | A.M. | | |
| | 3-11-63 | 8483 | | | |

| | |
|---|-------|
| UNLESS OTHERWISE SPECIFIED DIMENSIONS ARE IN INCHES AND INCLUDE CHEMICALLY APPLIED OR PLATED FINISHES | SCALE |
| DECIMALS | 1/1 |
| FRACTIONS | |
| TOLERANCES | |
| ANGLES | |

| | |
|----------------|--------|
| FINAL APPROVAL | A-3135 |
| B | |