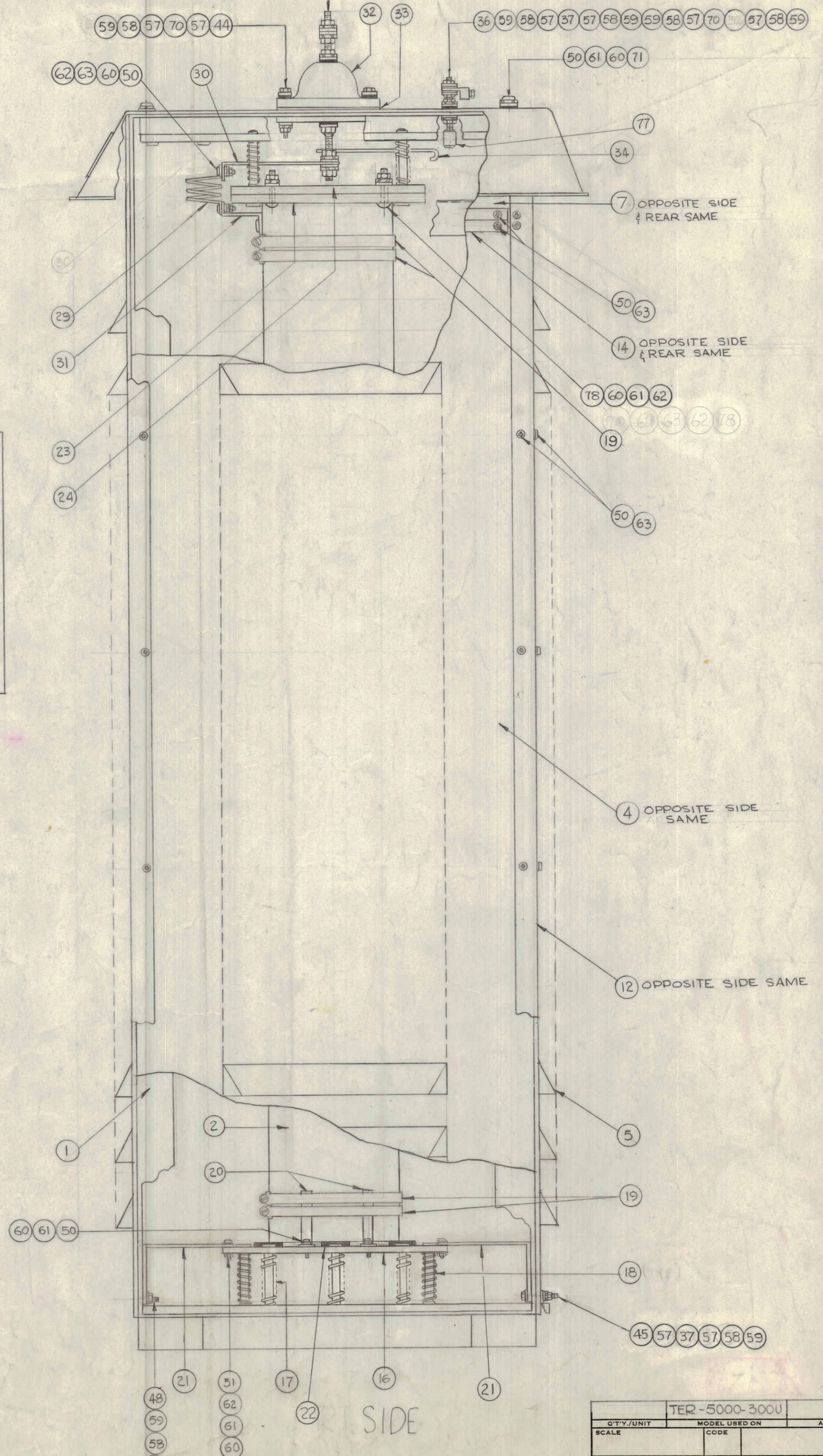
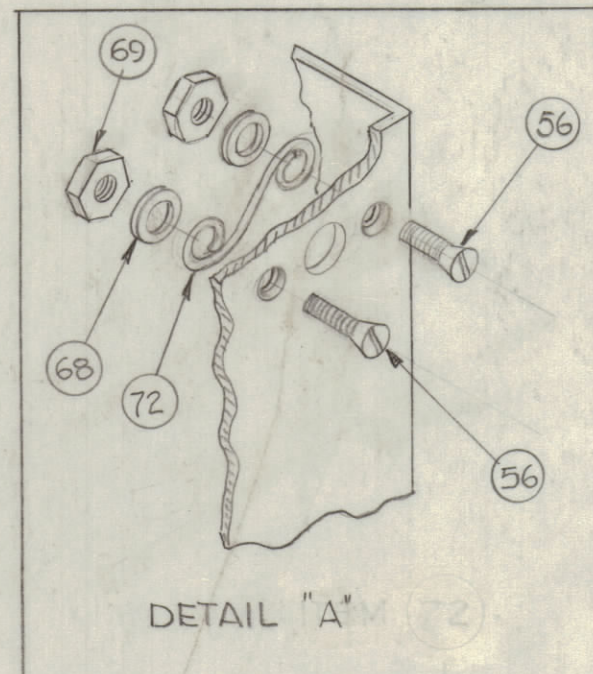
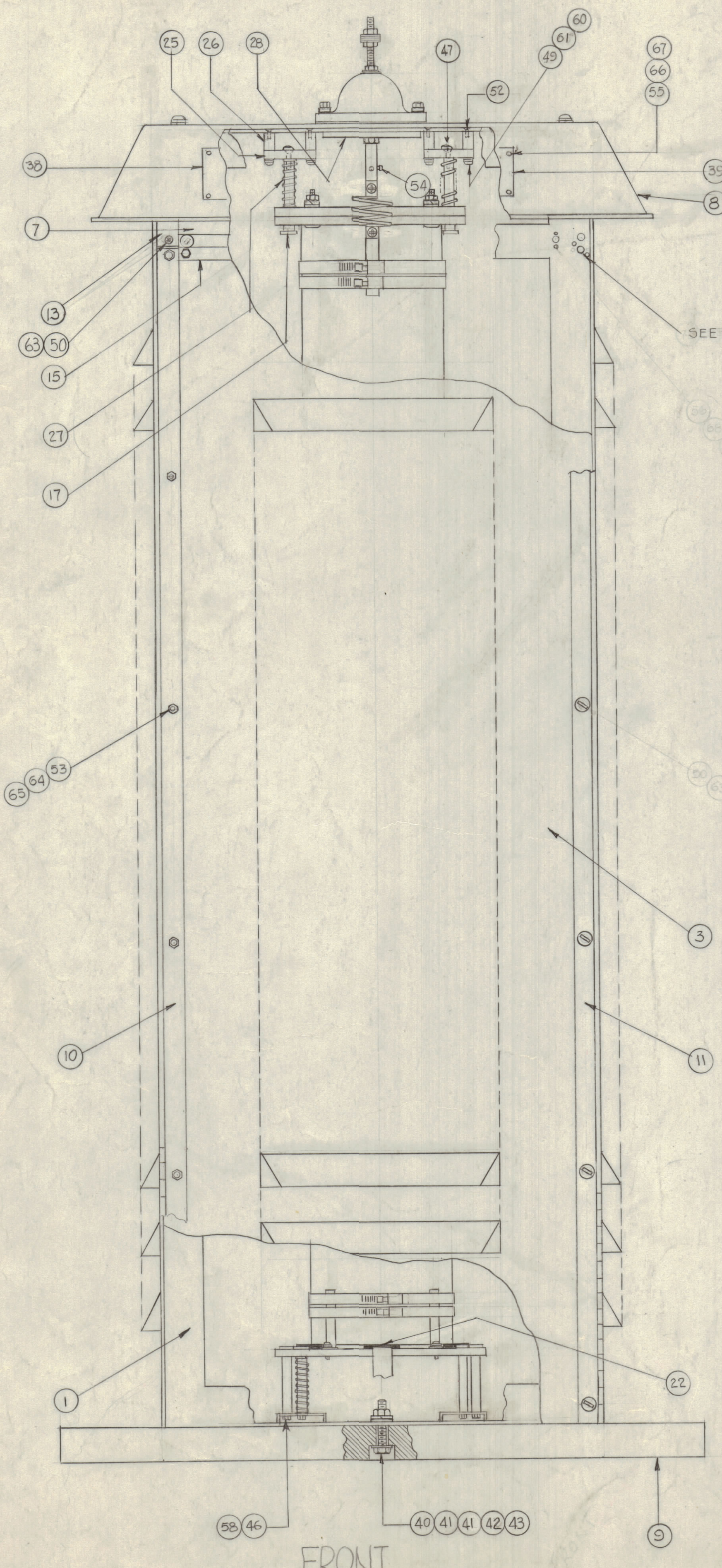


REVISIONS						
ZONE	SYM	DESCRIPTION	DATE	E.M.N. NO.	DRAFT	CHKD
A		ITEM (75) ADDED. ITEMS 2, 7, 9, 12, 14, 15, 19, 20, 21, 23, 24, 26, 29, 30, 31, 32, 36 THRU 42, 44 THRU 48, 50, 56, 57, 58, 60 THRU 64, 66 THRU 70, 72 CLARIFIED. ITEMS 73 & 74 DELETED. PICTORIAL CLARIFIED.	3-26-68	9708		
B		CHANGED ITEM #17 FR. PM834 TO PM834-1	3-9-68	11004	A.M.	
C		IT (47) WAS SCFP2520BN16	2-1-65	13377		



QTY	SYM	DESCRIPTION	SYMBOL
4	72	SCBP10-32BN20	SCREW, MACHINE
1	77	PM-430	ELECTRODE, SPARK GAP
2	76	GA-100	GASKET, NEOPRENE
5	75	NTH5020BN24	NUT, HEX
	74	DELETED	
	73	DELETED	
10	72	FS-102-1	LOCKSPRING
8	71	GA-137-3	GASKET, NEOPRENE
7	70	GA-104	GASKET, NEOPRENE
20	69	NTH0348BN6	NUT, HEX
20	68	LWSC3MRN	WASHER, LOCK, SPLIT
8	67	NTH0440BN6	NUT, HEX
8	66	LWE04MRN	WASHER, LOCK, EXT.
10	65	NTH0832BN1	NUT, CAP
10	64	LWE08MRN	WASHER, LOCK, EXT.
22	63	LWE10MRN	WASHER, LOCK, EXT.
8	62	NTH1032BN12	NUT, HEX
42	61	LWS10MRN	WASHER, LOCK, SPLIT
44	60	FW10HBN	WASHER, FLAT
12	59	NTH2520BN14	NUT, HEX
22	58	LWS25MRN	WASHER, LOCK, SPLIT
19	57	FW25HBN	WASHER, FLAT
20	56	SCFP0348BN6	SCREW, MACHINE
8	55	SCFP0440BN5	SCREW, MACHINE
1	54	SCFP0632BN4	SCREW, MACHINE
10	53	SCFP0832BN5	SCREW, MACHINE
16	52	SCFP1032BN8	SCREW, MACHINE
2	51	SCFP1032BN12	SCREW, MACHINE
104	50	SCFP1032BN8	SCREW, MACHINE
24	49	SCFP1032BN16	SCREW, MACHINE
1	48	SCFP2520BN10	BOLT, MACHINE
4	47	SCBP2520BN16	BOLT, MACHINE
10	46	SCHH2520BN12	BOLT, MACHINE, HEX HEAD
1	45	SCHH2520BN16	BOLT, MACHINE, HEX HEAD
6	44	SCHH2520BN24	BOLT, MACHINE, HEX HEAD
8	43	NTH5013BN24	NUT, HEX
13	42	LWS50MRN	WASHER, LOCK, SPLIT
22	41	FW50HBN	WASHER, FLAT
8	40	SCHH5013BN36	BOLT, MACHINE, HEX HEAD
1	39	NP-176-18	PLATE, IDENT
1	38	NP-195	PLATE, WARNING
2	37	TE-106	TERMINAL, LUG
1	36	SM2520EN3.500	ROD, THREADED
1	35	A-3131	ANTENNA STUD ASSEMBLY
1	34	PM-432	ROD, SPARK GAP
1	33	GA-139	GASKET, NEOPRENE
1	32	NS-123	INSULATOR, BOWL
1	31	MS-3114	LEAD, ELECT. COIL, BOTTOM
1	30	MS-2665-9	LEAD, ELECT. COIL, TOP
1	29	CL-308	COIL, RF, FIXED
1	28	PX-703	SUPPORT, BOWL
4	27	SP-127-2	SPRING, COMPRESSION
4	26	PX-702	STIFFENER, TOP
2	25	PX-701	INSULATOR, SUPPORT, TOP
1	24	PX-700-2	PLATE, TOP, RESISTOR
1	23	PX-700-1	PLATE, TOP, RESISTOR RETAINING
4	22	RY-119	SHOCK ABSORBER, RUBBER
2	21	MS-2665-7	LEAD, ELECT. GND.
4	20	MS-2665-10	LEAD, ELECT. RESISTOR, BOTTOM
4	19	CU-129-19SS	CLAMP, HOSE
10	18	SP-127-1	SPRING, COMPRESSION
14	17	PM-834-1	RETAINER, SPRING
1	16	MS-3109	PLATE, SUPPORT, RESISTOR
1	15	MS-3112-2	MOLDING, TOP, DOOR
3	14	MS-3112-1	MOLDING, TOP, SIDE & REAR
2	13	MS-3111	MOLDING, CORNER, TOP
2	12	MS-3110	MOLDING, CORNER, REAR
1	11	HI-115-2	HINGE, RIGHT
1	10	HI-115-1	HINGE, LEFT
1	9	WD-132	SUPPORT, BASE
1	8	PX-699	COVER, TOP
4	7	PX-698	PANEL, TOP
	6	DELETED	
1	5	PX-696	PANEL, REAR
2	4	PX-695	PANEL, SIDE
1	3	PX-697	DOOR, FRONT
1	2	RR-132-1	RESISTOR, FIXED GLASS
1	1	MS-3108	FRAME, MAIN

F. BUDETTI LIST OF MATERIAL			
MATERIAL	THE TECHNICAL MATERIEL CORP. MAMARONECK, NEW YORK		
FINISH	TITLE	DATE	FINAL APPROVAL
	FINAL ASSEMBLY	3-22-68	
UNLESS OTHERWISE SPECIFIED DIMENSIONS ARE IN INCHES AND INCLUDE CHEMICALLY APPLIED OR PLATED FINISHES		CHECKED	DATE
DECIMALS	FRACTIONS	ELECT. DES.	DATE
XX ± .05	1/16	MECH. DES.	DATE
XXX ± .005	ANGLES ± 0° 30'		

NOTES

THE CONTENTS OF THIS DRAWING ARE THE EXCLUSIVE PROPERTY OF THE TECHNICAL MATERIEL CORP. ITS UNAUTHORIZED USE OR REPRODUCTION IN WHOLE OR IN PART IS STRICTLY FORBIDDEN.

A-3130

B

A