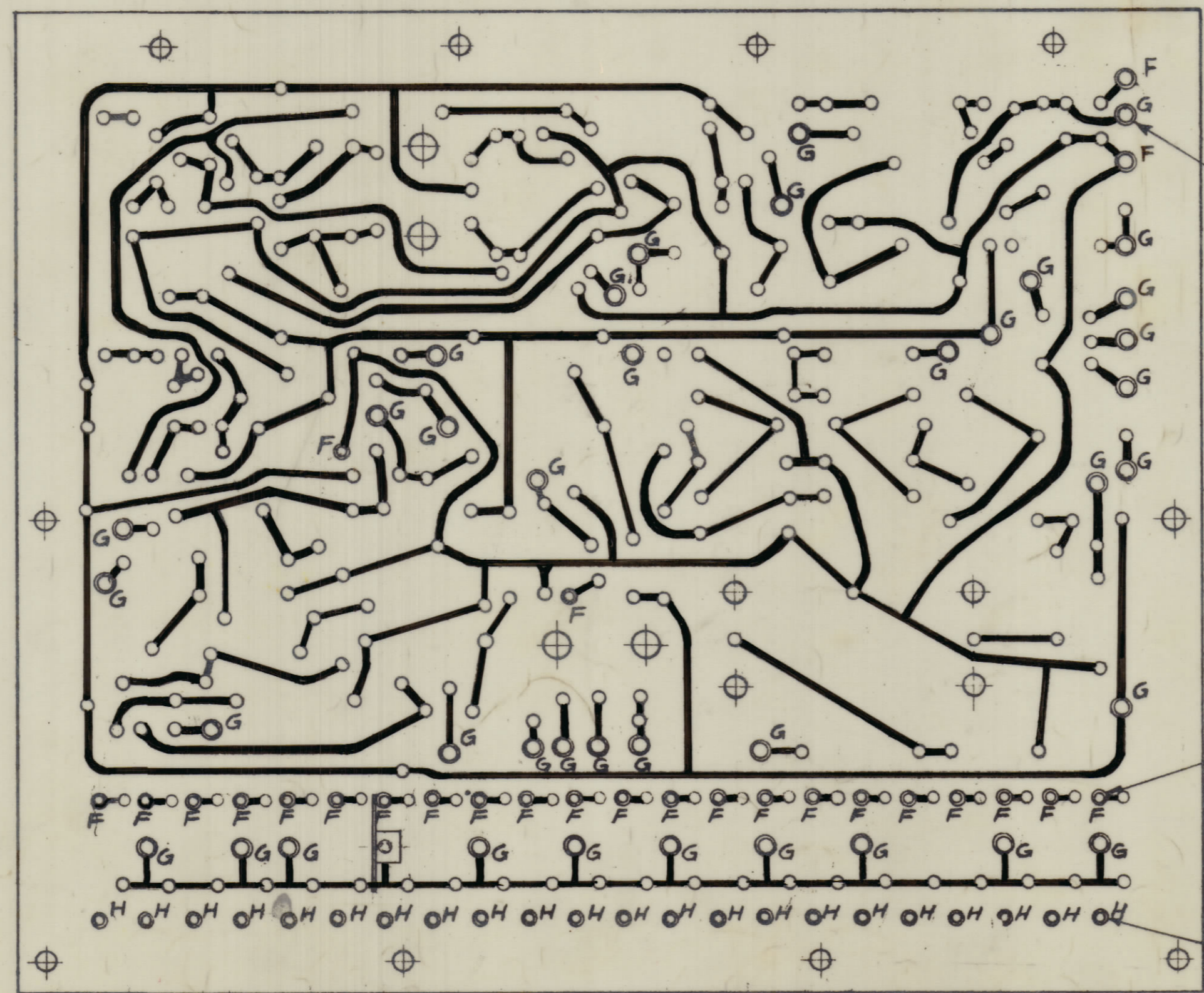


MACHINING (A 3094-1)



SUB-ASSY (A 3094-B)

HOLE & PAD SPECS

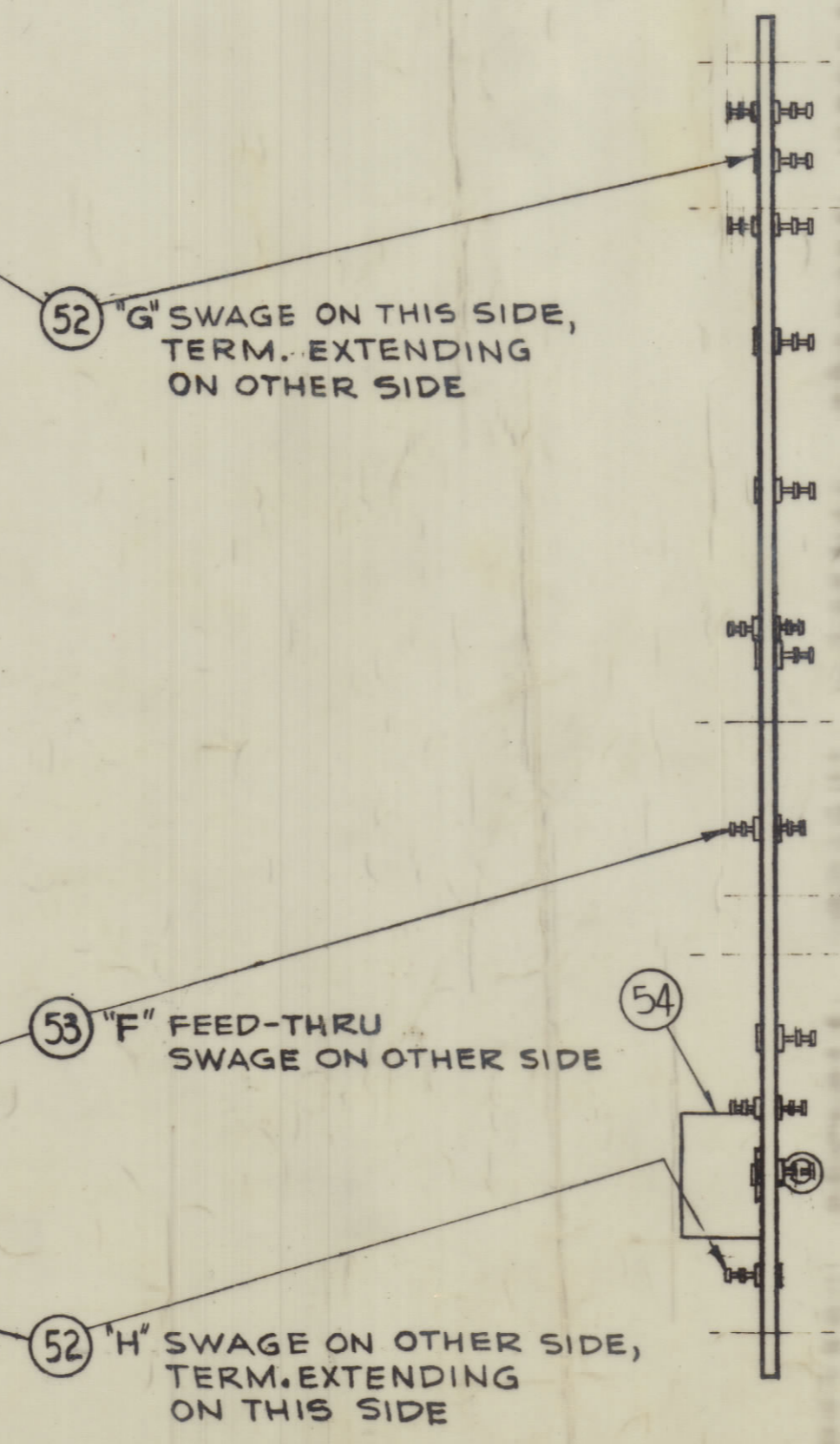
HOLE	DIAMETER	PAD DIA	REQ'D
UNMARKED	.059 DIA (SEE NOTE 2)	.120	272
A	.093 DIA.	.120	61
B	.073 DIA.	.156	27
C	5/32 DIA.	NONE	4
D	7/32 DIA.	NONE	4
E	3/16 DIA.	NONE	10

OTHER SPECIFICATIONS

CONDUCTOR:
 NOMINAL WIDTH: .062
 MIN. WIDTH: .040
 MIN. SPACING: .031
 NO FILLETS REQ'D
 COPPER FOIL: 2 OUNCES - ONE SIDE
 PLATING:
 MIN. THICKNESS: .0008 TIN LEA.
 ALL CONDUCTORS
 BASE MATERIAL:
 EPOXY G-10 3/32 THICK

NOTE: LETTER DESIGNATIONS AS SHOWN ON CIRCUIT DENOTE HOLE SIZES; DO NOT PRINT
 2- HOLES ARE TO BE "PLATED-THRU" AND HAVE A MINIMUM COPPER PLATING THICKNESS OF .0015 AT ANY POINT WITHIN THE HOLE. THE SOLDER-PLATE THICKNESS MUST BE A MINIMUM OF .0008 AT ANY POINT WITHIN THE HOLE PER TMC SPEC # S-735
 THE FINISHED DIA. OF THE PLATED HOLE MUST BE A MINIMUM OF .050.

REVISIONS						
ZONE	SYM	DESCRIPTION	DATE	EM.N. NO.	DRAFT	CHKD
G4	A	LEGEND, 'A' WAS 63; 'B' WAS 24, 276 WAS 279	2-7-68	8203		
F8	B	A-3094-1 CLARIFIED; SEE SHEET 1 OF 2 REVISION A	3-19-68	8596		
K3, G4	B	ITEM 52 QTY WAS 64, ITEM 53 QTY WAS 24, 2 HOLES AS GENERAL 'B' WAS 24 PICTORIAL CORRECTED, ITEM 16 WAS 24/370-231, 24'S RELOCATED IN ITEM 24 WAS 15, REQ'D	4-26-68	8887		
A2	C	ITEM (52) WAS TE-127-5-B.	7-31-68	9611		
K7E8F9, G5	D	LEADS REMOVED; RELOCATED, UNMARKED HOLES WERE (276) REQ'D.	8-20-68	9751		
A8	E	ON PICT & BUILD-UP ITEMS 54, 55 & 56 ADDED	8-22-68	10586		
-	F	FOR REVISION SEE SHEET 1 OF 2 REV 'F'	3-25-69	13407		
G9	G	(1) 'A' HOLE CHANGED TO 'B' & (3) 'B' HOLE CHANGED TO 'A'.	9/10/68	14748		
-	H	SEE SHEET 1 OF 2	12/1/68	15439		
-	J	(SEE SHEET 1 OF 2)	12/1/68	15439		
K3	K	(SEE SHEET 1 OF 2) CONDUIT ONE 'F' & 'B' HOLES ADDED	3-21-69	16761		
-	L	SEE SHEET 1 OF 2	6-9-66	16357		
K3, G4	M	ADDED CONNECTION TO 'B' HOLE & BUS (SEE SHEET 1 OF 2)	3-16-67	17976		



52 "G" SWAGE ON THIS SIDE, TERM. EXTENDING ON OTHER SIDE

53 "F" FEED-THRU SWAGE ON OTHER SIDE

52 "H" SWAGE ON OTHER SIDE, TERM. EXTENDING ON THIS SIDE

REQ'D.	ITEM	PART NUMBER	DESCRIPTION	SYMBOL
1	56	EY-100-4	EYELET, FLAT FLANGE	
1	55	TE-147	LUG, TERM	
1	54	MS-3088	SHIELD, ELECTRICAL	
26	53	TE-168-0-C	TERMINAL, MINIATURE	F
64	52	TE-127-5	TERMINAL, STUD	G, H

MATERIAL		LIST OF MATERIAL	
MATERIAL		THE TECHNICAL MATERIEL CORP. MAMARONECK, NEW YORK	
FINISH		TITLE PRINTED CIRCUIT BOARD & COMPONENTS	
QTY./UNIT	MODEL USED ON	DATE	FINAL APPROVAL
SCALE	CODE	DATE	DATE
1:1		12-11-62	BP
UNLESS OTHERWISE SPECIFIED DIMENSIONS ARE IN INCHES AND INCLUDE CHEMICALLY APPLIED OR PLATED FINISHES		DATE	DATE
DECIMALS		12-12-62	12-12-62
FRACTIONS		12-12-62	12-12-62
TOLERANCES		DATE	DATE
.X ± .08		12-12-62	12-12-62
.XX ± .01		12-12-62	12-12-62
.XXX ± .005		12-12-62	12-12-62

NOTES
 THE CONTENTS OF THIS DRAWING ARE THE EXCLUSIVE PROPERTY OF THE TECHNICAL MATERIEL CORP. ITS UNAUTHORIZED USE OR REPRODUCTION IN WHOLE OR IN PART IS STRICTLY FORBIDDEN.

A-3094 M

A 3094 M