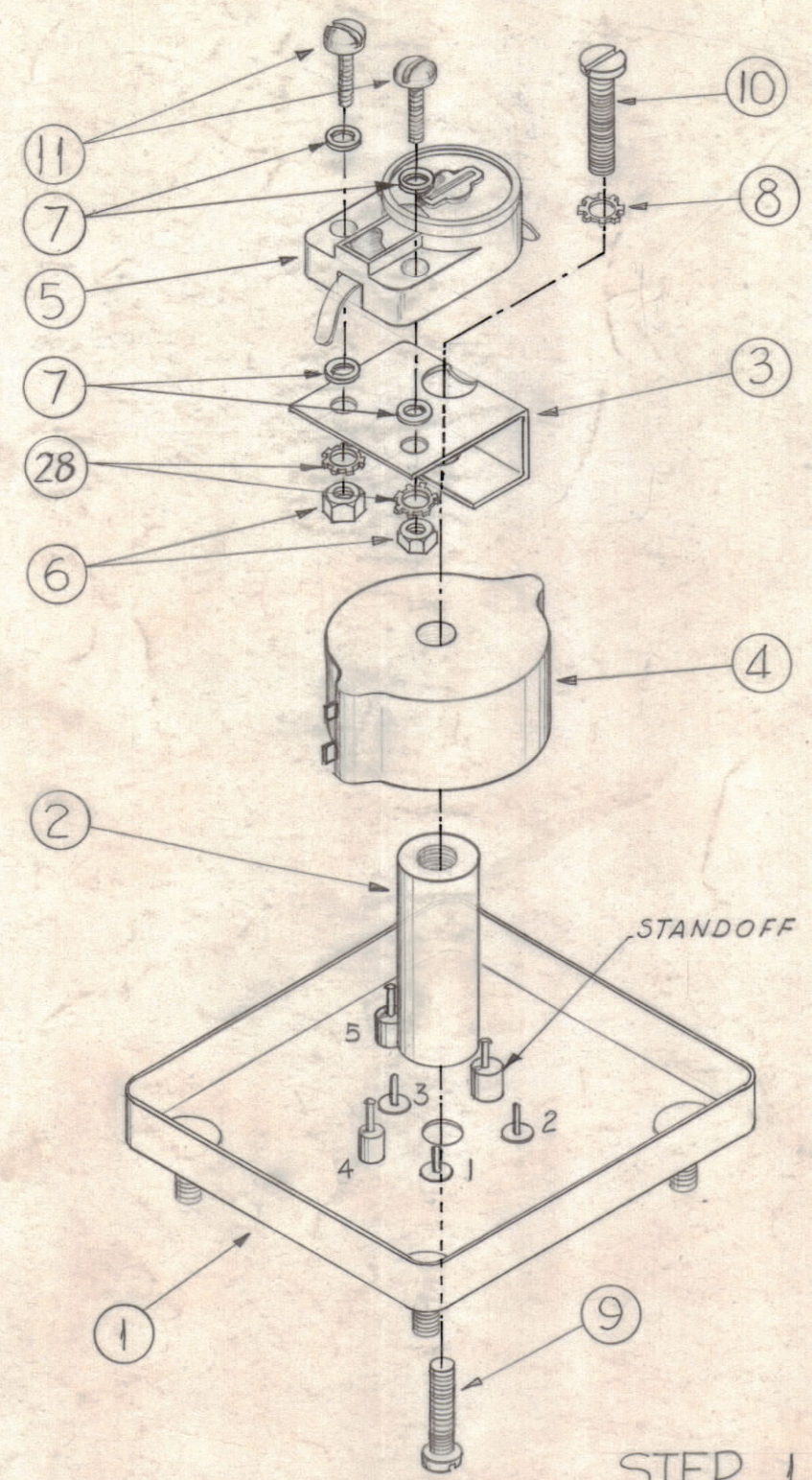


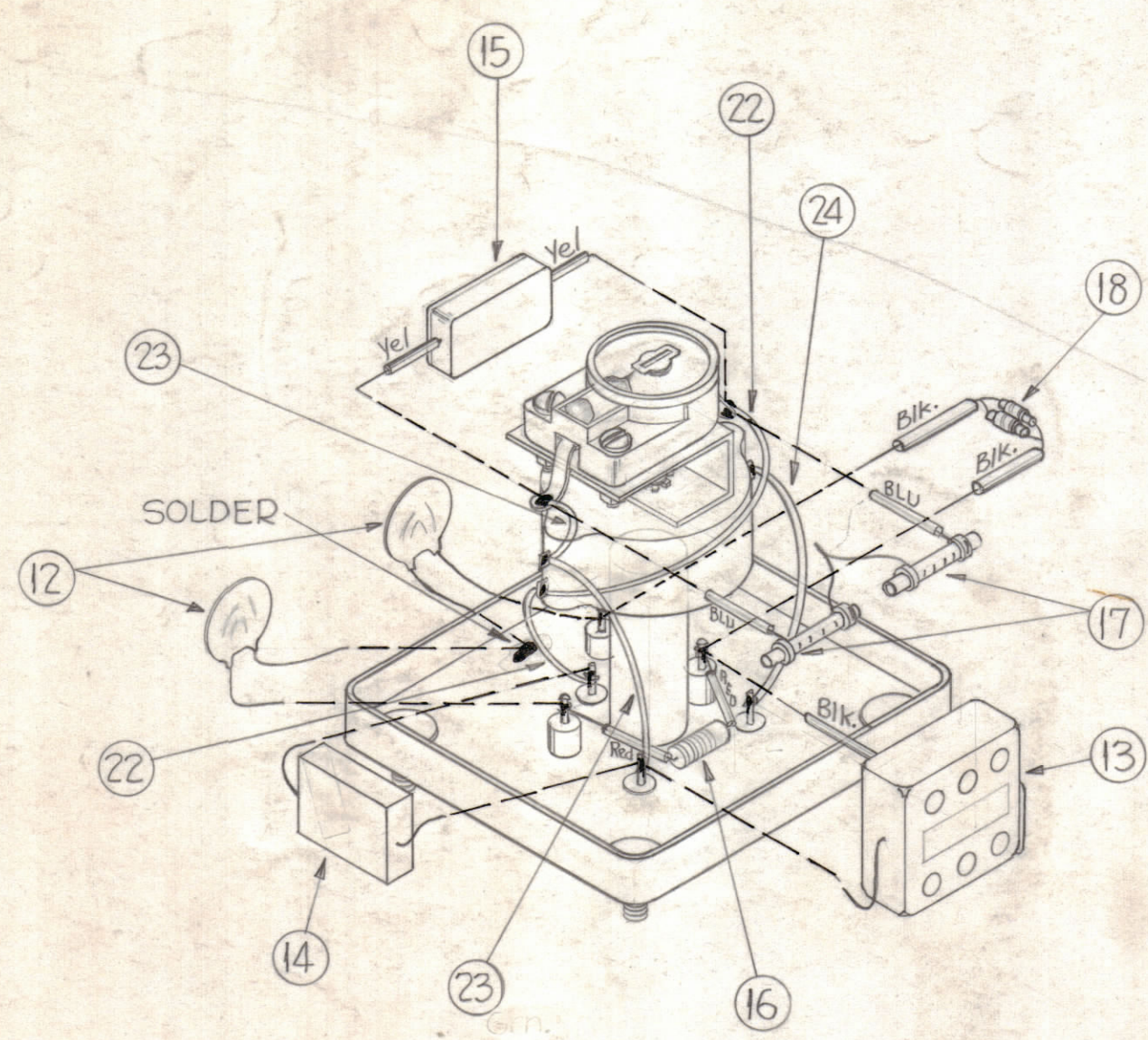
PROCEDURE

1. ASSEMBLE ITEMS 2,3,4&5 TO CAN ASS'Y. AS SHOWN IN STEP 1
2. ASSEMBLE COMPONENTS AS SHOWN IN STEP 2.
3. COMPLETE ASSEMBLY AS SHOWN IN STEP 3.

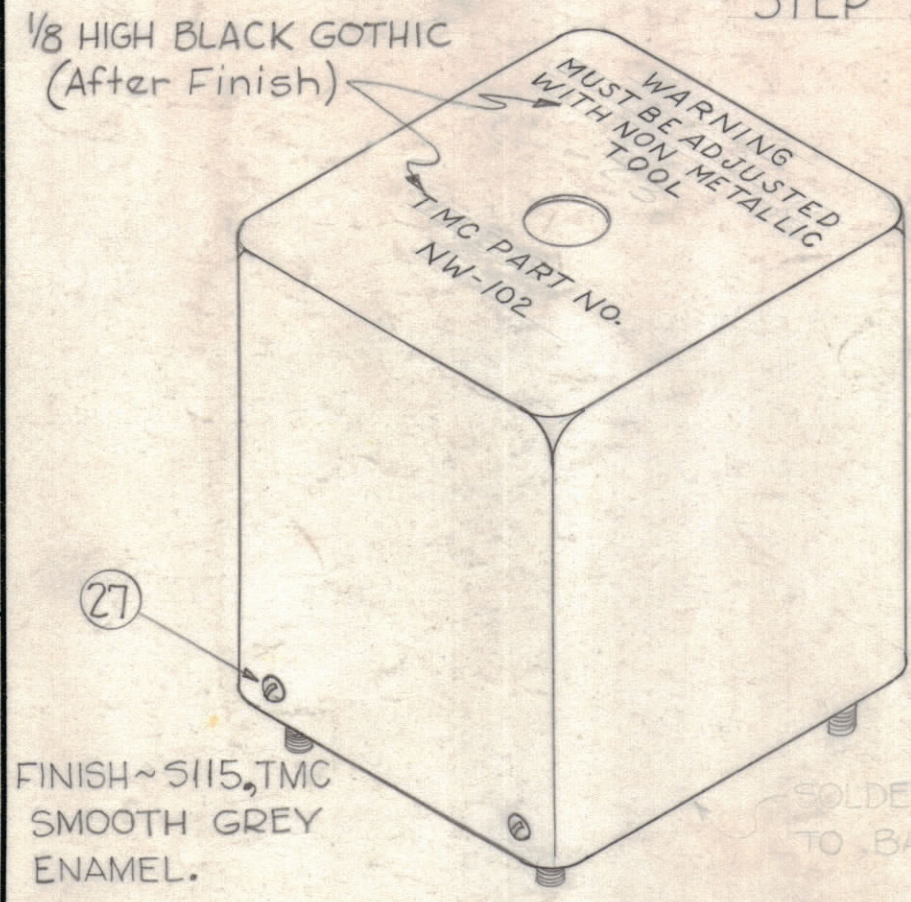
THE CONTENTS OF THIS DRAWING ARE THE EXCLUSIVE PROPERTY OF THE TECHNICAL MATERIEL CORP. ITS UNAUTHORIZED USE OR REPRODUCTION IN WHOLE OR IN PART IS STRICTLY FORBIDDEN.



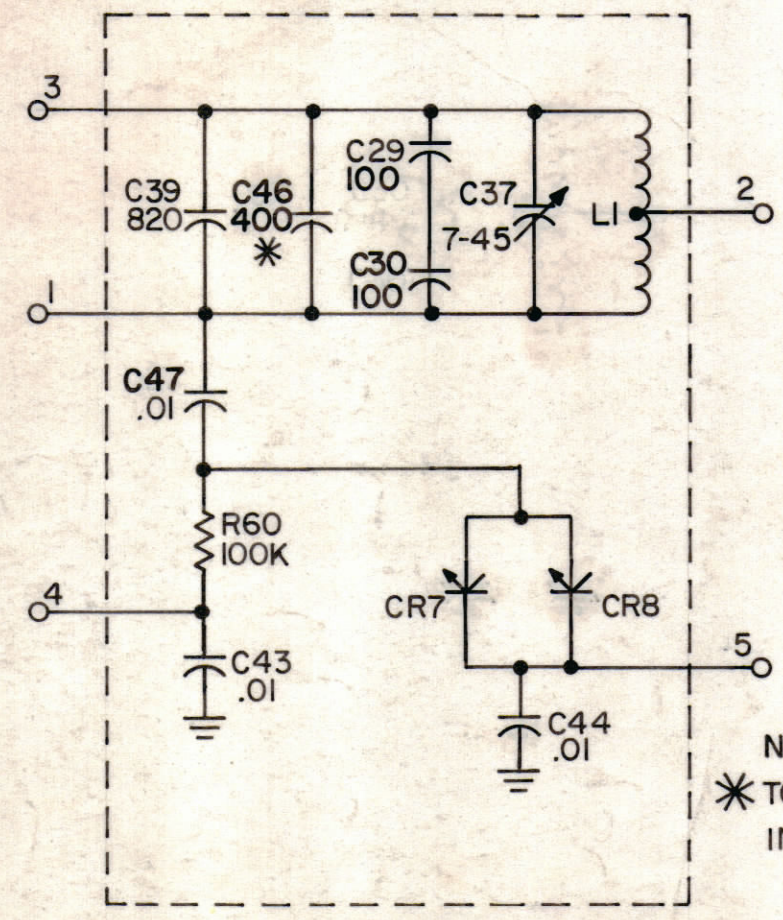
STEP 1
STEP 3



STEP 2



FINISH ~ S115, TMC SMOOTH GREY ENAMEL. SOLDER COVER TO BASE



NOMINAL VALUE. * TO BE DETERMINED IN TEST.

SCHEMATIC

2	28	LWE04MRN	Lockwasher, Ext.	
4	27	SFBO4405N4	Screw, Self-threading	
X	26	PX-104-6-.022	Insulation, Sleeving	Blue
X	25	BS-100	Solder, Soft	
X	24	MWC24(7)U4	Wire, Insulated	Yellow
X	23	MWC24(7)U5	" "	Green
X	22	MWC24(7)U0	Wire, Insulated	Black
X	21	PX-104-3-.022	Insulation, Sleeving	Red
X	20	4-2	" "	Yellow
X	19	PX-104-1-.022	Insulation, Sleeving	Black
2	18	CX-106-4	Capacitor, Voltage Var. Silicon	CR7 C28
2	17	CC107UJ101J	Capacitor, Temp. Compensating	C29 C30
1	16	RC20GF104K	Resistor, Carbon, Fixed	R60
1	15	CM20B401K*	Capacitor, Mica, Fixed	C46
1	14	CM20G821K	" " "	C39
1	13	CM35B103K	Capacitor, Mica, Fixed	C47
2	12	CC-100-16	Capacitor, Disc, Fixed	C43 C44
2	11	SCBS0440BN6	Screw, Machine	
1	10	SCBS0632BN12	" "	
1	9	SCBS0632BN6	Screw, Machine	
1	8	LWE06MRN	Lockwasher, Ext.	
4	7	WA-109-17	Washer, Fibre	
2	6	NTH0440BN8	Nut, Hex.	
1	5	CV11C450	Capacitor, Variable	C37
1	4	TF-178	Transformer	LI
1	3	MS-2556	Brk't, Capacitor Support	
1	2	TE-135-15	Standoff	
1	1	BX-194	Case & Cover	

REQ. ITEM	PART NO.	DESCRIPTION	SYMBOL
THE TECHNICAL MATERIEL CORP. MAMARONECK, NEW YORK			
NW-102 ASSY			
DRAWN		CHECKED	FINAL APPROVAL
TYPE & TEMPER		HEAT TREAT. SPEC.	
FINISH & SPEC. NO.		ELEC. DES. APP.	MECH. DES. APP.
SHEET		OF	

B	D2	ITEM 18 WAS CX-106-1	10-2-61	5658	W	W	W
A	EZ	ITEM (28) ADDED	8-25-61	5500	W	W	W
	EZ	ITEM (26) WAS PX-100-6-.022, ITEM (7) QWAS WAS 2					
	D-2	ITEM (20) WAS PX-100-4-.022, ITEM (21) WAS PX-100-3-.022					
	B-Z	ITEM (6) WAS NTH0540BN8, ITEM (19) WAS PX-100-1-.022					