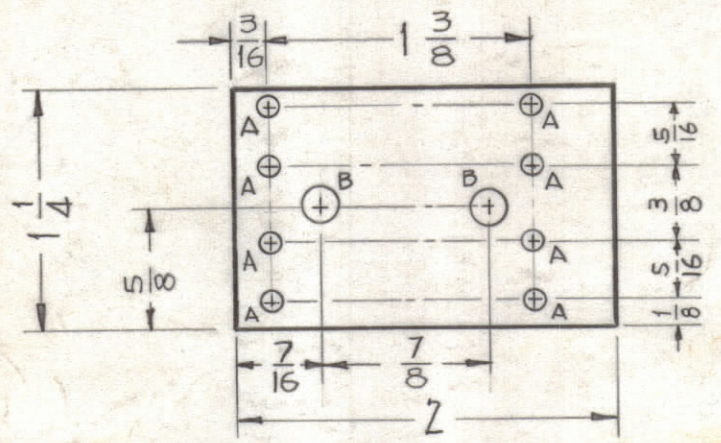
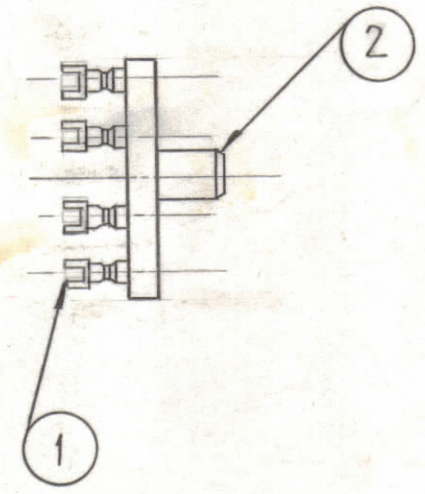


STAGE-1 MACHINING
(A-3019-1)

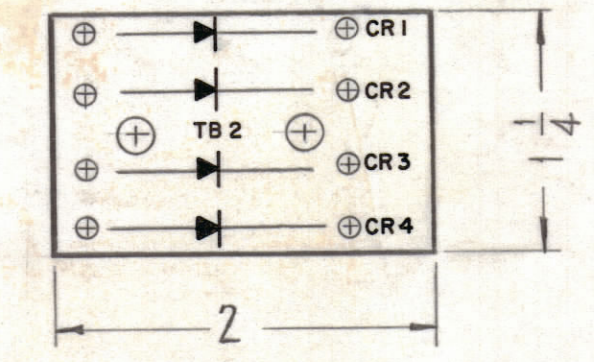


A — .116 DIA — 8 REQ
B — .189 DIA — 2 REQ

STAGE-3
(A-3019-3) SUB-ASSY



STAGE-2 STAMPING
(A-3019-2)



NOTICE TO PERSONS RECEIVING THIS DRAWING

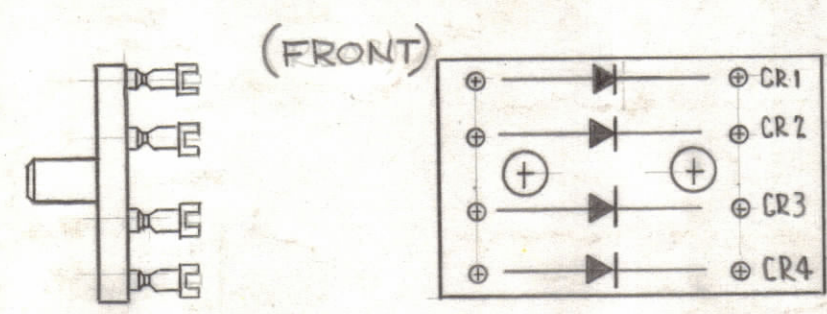
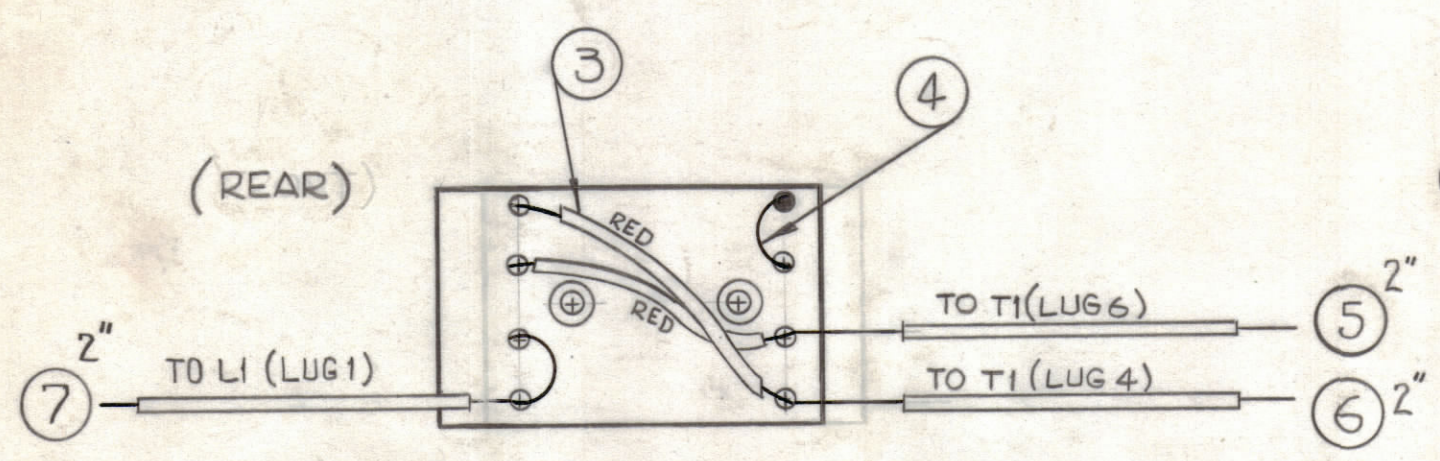
THE TECHNICAL MATERIEL CORPORATION claims proprietary right in the material disclosed herein. This drawing is issued in confidence for engineering information only and may not be reproduced or used to manufacture anything shown herein without permission from THE TECHNICAL MATERIEL CORPORATION to the user. This drawing is loaned for mutual assistance and is subject to recall at any time.

Property of:
THE TECHNICAL MATERIEL CORPORATION
MAMARONECK, NEW YORK

MATERIAL — 1/8 XXXP-PHENOLIC FINISH NATURAL

ALL LETTERING TO BE 1/8 HIGH BLACK GOTHIC

STAGE-4 ELECTRICAL ASSY
(A-3019-4)



○ — SOLDER CONNECTION
● — DO NOT SOLDER
STRIP ALL LEADS 1/2" BACK

○ — SOLDER CONNECTION
● — DO NOT SOLDER
STRIP ALL LEADS 1/2" BACK

REQ.	ITEM	PART NO.	DESCRIPTION	SYMBOL
4	9	1N2071A	DIODE, SILICON	CR-1,2,3,4
X	8	BS-100	SOLDER SOFT	
2"	7	MWC 22(7) U96	WIRE INSULATION	W/BUE
2"	6	MWC 22(7) U93	WIRE INSULATION	W/ORN.
2"	5	MWC 22(7) U3	WIRE INSULATION	ORN.
X	4	WL-100-7	WIRE BUSS (SIZE 22)	
X	3	PX-104-3.034	INSULATION SLEEVING (SIZE 20)	RED
2	2	TE-108-22	STAND OFF RIVET TYPE	
8	1	TE-109-3	SPLIT TERMINAL LUG	

SYM	ZONE	DESCRIPTION	DATE	CH. NO.	DRAFTS	CHECKER	ENG. APP.
B	C2	ITEM 9 WAS DD-101-1	3-14-66	15836	NLA	RU	[Signature]
A	B2	ITEM 2 WAS TE-108-3	6-23-61	5109	WAF	RU	[Signature]

UNLESS OTHERWISE SPECIFIED:
DIMENSIONS ARE IN INCHES
TOLERANCES ON
FRACTIONS ± 1/64 DECIMALS ± .005 ANGLES ± 1/2°

SCALE
MAXIMUM ALLOWABLE TOLERANCES HAVE BEEN DETERMINED AND ANY DEVIATIONS WILL BE CAUSE FOR REJECTION. REMOVE ALL BURRS & SHARP EDGES

REQ. PER UNIT	MODEL	SECTION	ASSY. NO.	DATE
1	GPE-1			6-8-61

STOCK SIZE		THE TECHNICAL MATERIEL CORP. MAMARONECK, NEW YORK	
		TERMINAL BOARD #2 POWER SUPPLY	
MATERIAL		FINISH & SPEC. NO.	
RIZZO		A-3019	
DRAWN	CHECKED	ELEC. DES. APP.	MECH. DES. APP.
[Signature]	[Signature]	[Signature]	[Signature]
TYPE & TEMPER		HEAT TREAT. SPEC.	
FINISH & SPEC. NO.		SHEET OF	
		1 B	