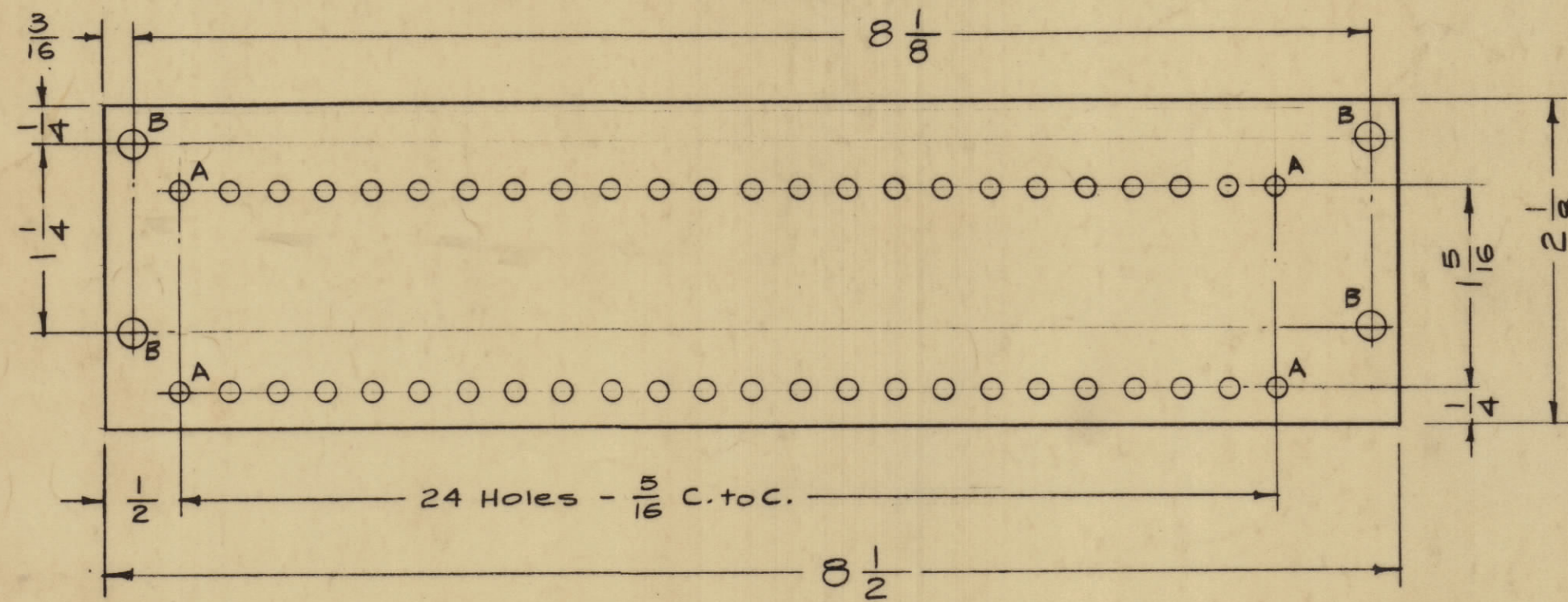


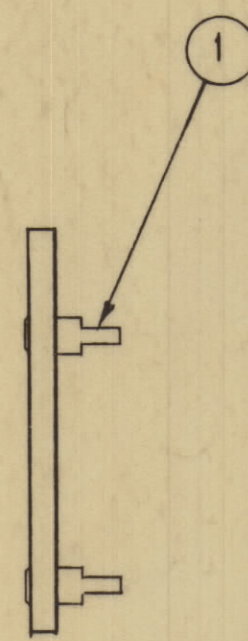
IF IT IS FOUND DESIRABLE TO CHANGE ANY TOLERANCE OR OTHER DETAIL SPECIFIED ON THIS DRAWING NOTIFY THE PURCHASER PROMPTLY.
 MAXIMUM ALLOWABLE TOLERANCES HAVE BEEN DETERMINED AND DEVIATIONS WILL BE CAUSE FOR REJECTION.
 REMOVE ALL BURRS AND SHARP EDGES



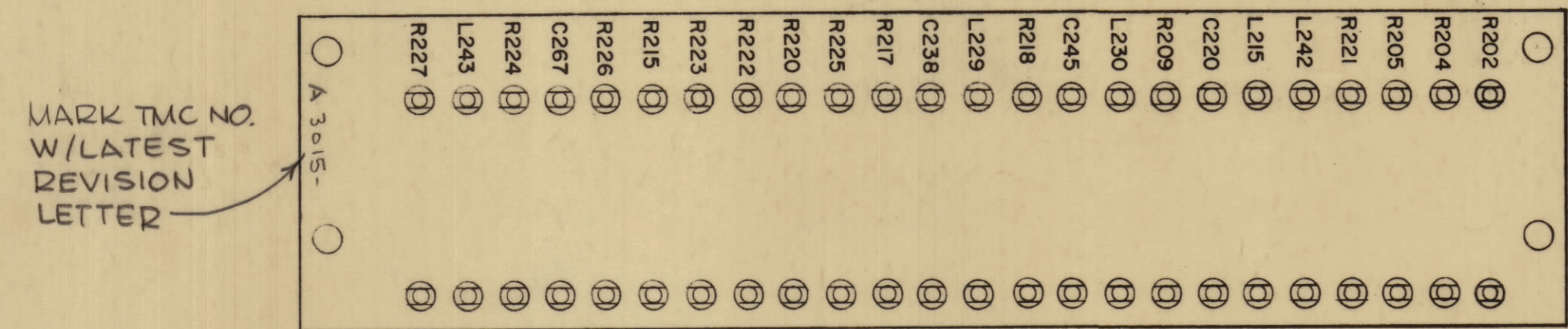
MATERIAL - 1/8 THK. XXXP Phenolic, Natural

A - #32 Dr. (.116 D) 48 Req.
 B - 3/16 (.187) D. 4 Req.

STAGE 1 MACHINING

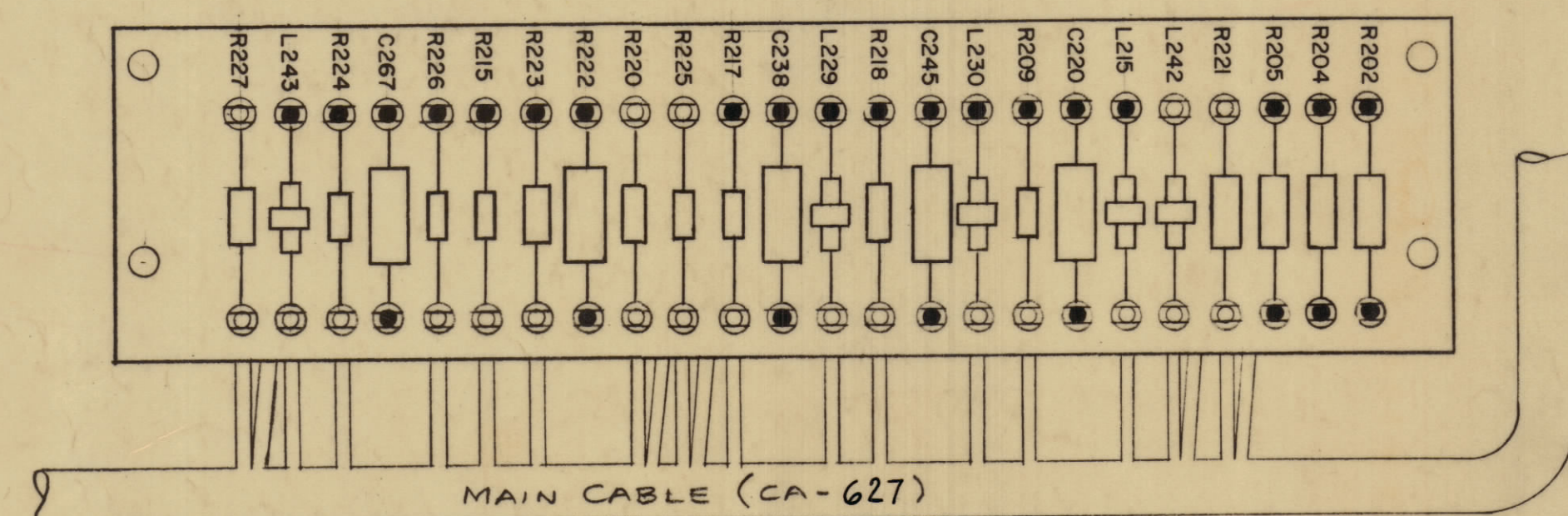


STAGE 3 SUB ASS'Y

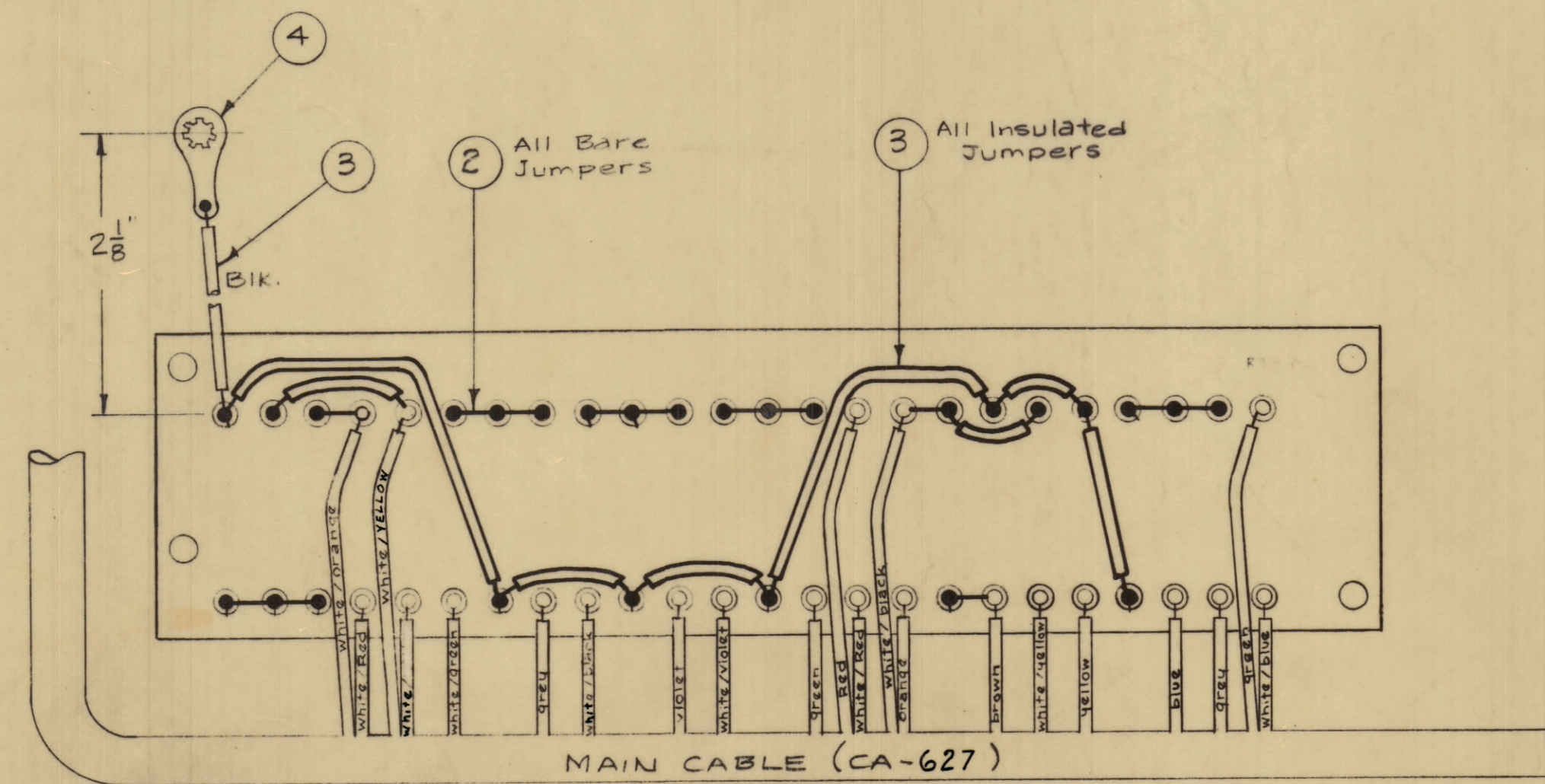


Lettering 1/8 High Black Gothic,
 PER TMC SPEC 5727.

STAGE 2 MARKING



STAGE 4 FINAL ASSY.



NOTE - Main Cable (CA-627) Shown for Ref. only.
 Solder all connections indicated by blackened terminals.
 All other connections (from Cable) to be soldered upon Assembly of Terminal Board into Unit.

REQ. ITEM	PART NO.	DESCRIPTION	SYMBOL
1 21	RC20GF154J	RESISTOR, FIXED COMPOSITION	R209
1 20	RC20GF394J	RESISTOR, FIXED COMPOSITION	R227
1 19	RC20GF564J		R224
1 18	RC20GF123J		R226
1 17	RC32GF206J		R215
1 16	RC42GF120J		R222
1 15	RC20GF515J		R225
1 14	RC20GF754J		R218
1 13	RC20GF124J		R217
1 12	RC32GF184J		R223
1 11	RC32GF822J		R220
1 10	RC32GF683J	RESISTOR, FIXED COMPOSITION	R221
— 9	DELETED		
2 8	RC32GF473J	RESISTOR, FIXED COMPOSITION	R204 R205
1 7	RC20GF100J	RESISTOR, FIXED COMPOSITION	R202
4 6	CN108C104J	CAPACITOR, FIXED MYLAR (C245, C247)	
5 5	CL-180	COIL, R.F. FIXED (L242, L230, L215, L229, L245)	
1 4	TE-104-3	Lug, Terminal	
X 3	MWC22(7)UO	Wire, Insulated, Size 22	B1K
X 2	WL-100-7	Wire, Buss Size 22	
48 1	TE-160	Terminal	

ISSUE	ITEM	CHANGED FROM	DATE	CN. NO.	DRAFTS	CHECKER	ENG. APP.
D		ITC WAS CN108C1003J	1-16-61	17483	WHD		
C		RES. TOL WAS K. CHG'D TO C. STAGE 1 TO 3 TO 2. CHG. MARKING OF STRIPES ON STAGE (4) L242 WAS WHITE (W) L242 (BOTTOM) WAS WH/YELLOW	12/15/66	17461	RME		
B	1	ITEM 21 WAS RC20GF136K	7-21-61	5595	LL	AB	RK
A	6	ITEM 19 WAS RC20GF474K					
	5	ITEM 17 WAS RC20GF156K					
	4	ITEM 15 WAS RC20GF305J					
	3	ITEM 14 WAS RC20GF474K					
	2	ITEM 13 WAS RC20GF683J					

NOTICE TO PERSONS RECEIVING THIS DRAWING
 THE TECHNICAL MATERIEL CORPORATION claims proprietary right in the material disclosed herein. This drawing is issued in confidence or engineering information only and may not be reproduced or used to manufacture anything shown hereon without permission from THE TECHNICAL MATERIEL CORPORATION to the user. This drawing is loaned for mutual assistance and is subject to recall at any time.
 Property of:
 THE TECHNICAL MATERIEL CORPORATION
 MAMARONECK, NEW YORK

1	RFD-1A	PAL-1KA	6-9-61
REQ. PER UNIT	MODEL	PROJECT NO.	DATE
		ASSY. NO.	

See Stage 1	STOCK SIZE	THE TECHNICAL MATERIEL CORP. MAMARONECK, NEW YORK
See Stage 1	—#—	TERMINAL BOARD, ALL STAGES
See Stage 1	MATERIAL WEIGHT PER PC.	(RFD-1A)
See Stage 1	TYPE & TEMPER	M.A.F. RK
See Stage 1	DRAWN	ELC/DES. APP. MECH. DES. APP.
See Stage 1	HEAT TREAT. SPEC.	CHECKED
See Stage 1	FINISH & SPEC. NO.	FINAL APPROVAL

A 3015 D