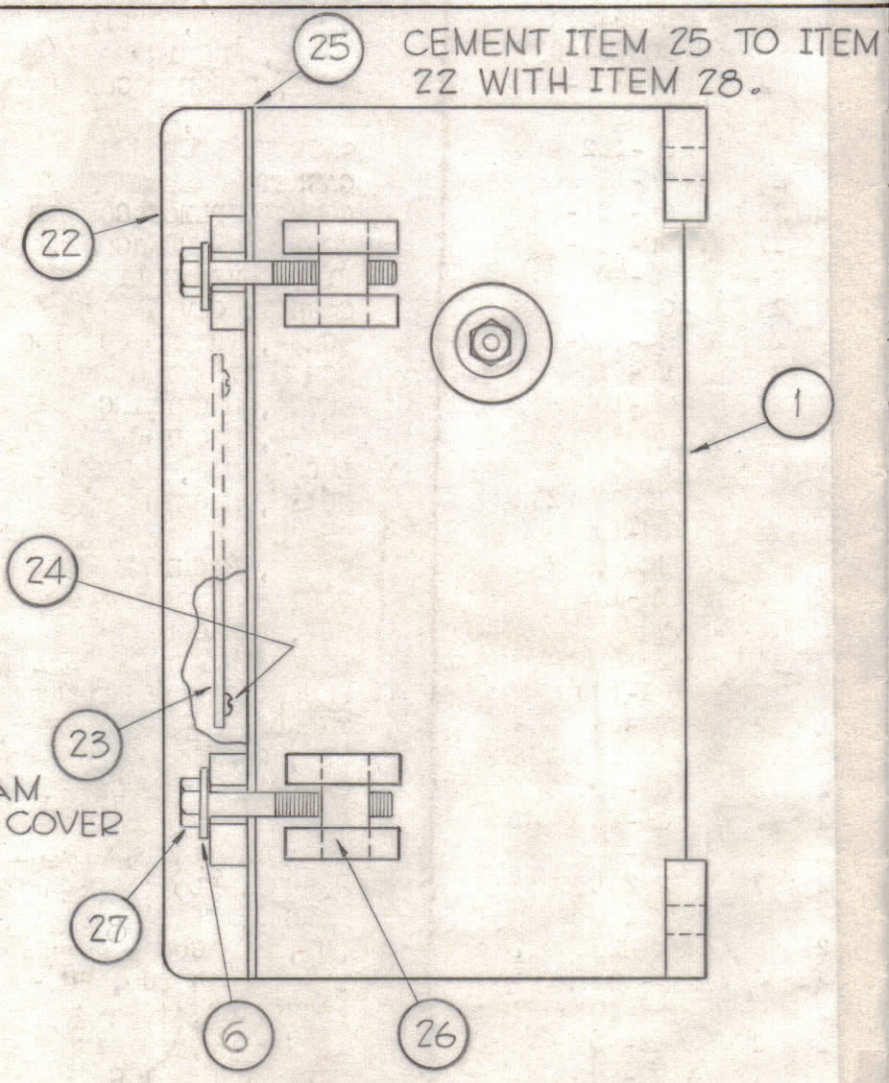
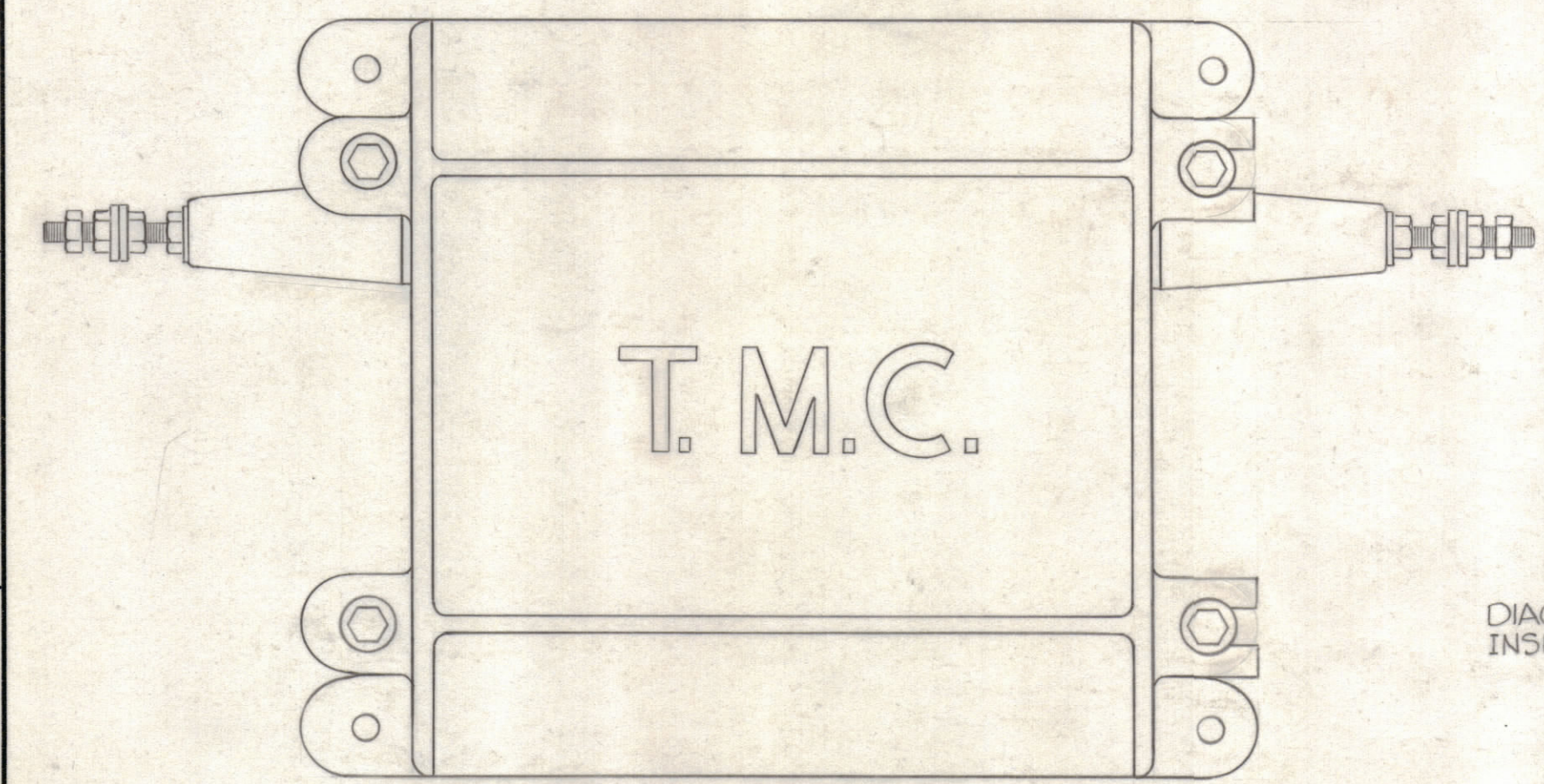
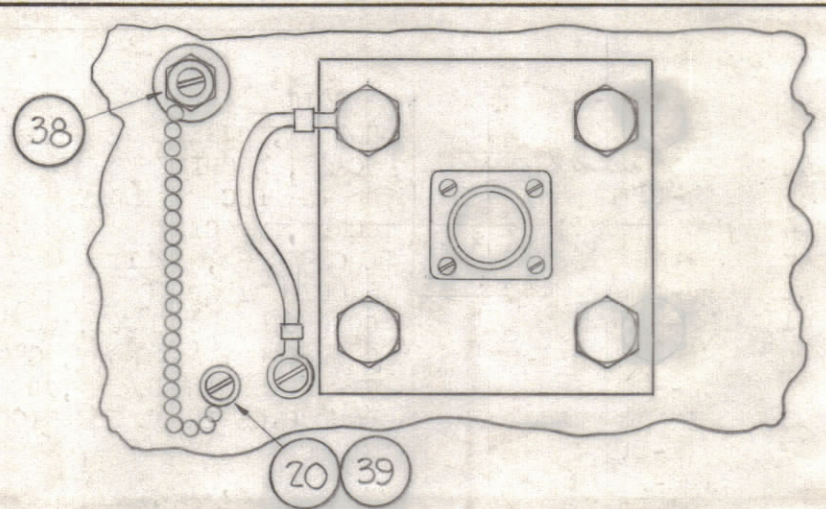
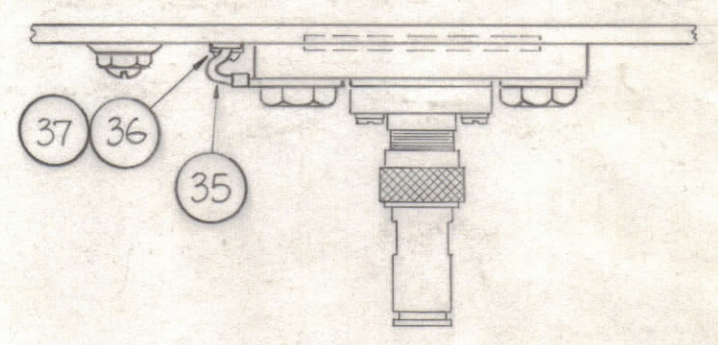
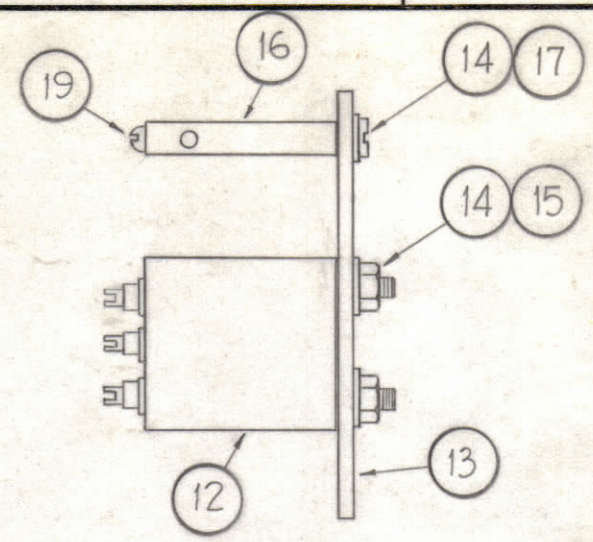
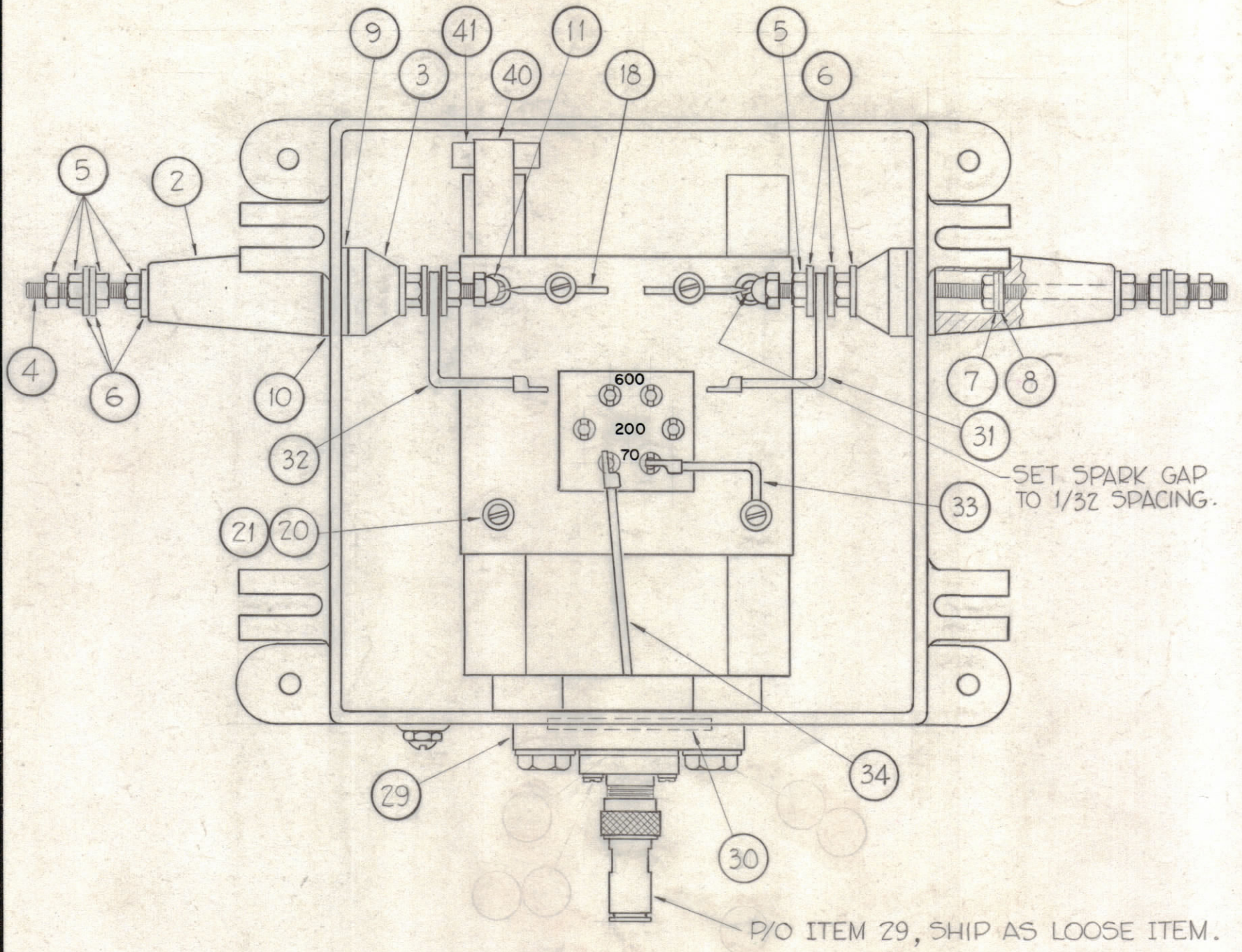


NOTICE TO PERSONS RECEIVING THIS DRAWING
 THE TECHNICAL MATERIEL CORPORATION claims proprietary right in the material disclosed hereon. This drawing is issued in confidence for engineering information only and may not be reproduced or used to manufacture anything shown hereon without permission from THE TECHNICAL MATERIEL CORPORATION to the user. This drawing is loaned for mutual assistance and is subject to recall at any time.

Property of:
 THE TECHNICAL MATERIEL CORPORATION
 MAMARONECK, NEW YORK



2	41	AD-100-1/6	DESSICANT
1	40	MS-933	HOLDER, DESSICANT
1	39	SCBS0832BN4	SCREW, MACHINE
1	38	A-1291	DRAIN PLUG ASSEMBLY
1	37	SCBS1032BN4	SCREW, MACHINE
1	36	LWS10MRN	LOCKWASHER, SPLIT
1	35	A-1164	GROUND STRAP, CASE
1	34	A-876	CONNECTOR ASSEMBLY, COAX
1	33	A-850	CONNECTOR ASSEMBLY, GROUND
1	32	A-849	CONNECTOR INSULATOR, LEFT
1	31	A-848	CONNECTOR INSULATOR, RIGHT
1	30	GA-102	GASKET, NEOPRENE
	29	AX-259	MOUNTING, PLATE CONNECTOR ASSEMBLY
X	28	GL-101-1	CEMENT, PLIOBOND
4	27	SC-108-9	BOLT, CAP HEXAGON HEAD
4	26	PM-100	PIN, COVER BOLT
1	25	GA-103	GASKET, COVER
4	24	SC-102-1	SCREW, THREAD CUTTING
1	23	LD-915	SCHEMATIC DIAGRAM
1	22	PM-105	COVER, MACHINING
4	21	SCBS0832BN6	SCREW, MACHINE
4	20	LWE08MRN	LOCKWASHER, EXTERNAL TOOTH
2	19	SCRS0632SN6	SCREW, MACHINE
2	18	PM-103	SPARK ROD
2	17	SCBS0632BN6	SCREW, MACHINE
2	16	PM-102	POST
4	15	NTH0632BN8	NUT, HEXAGON
6	14	LWE06MRN	LOCKWASHER, EXTERNAL TOOTH
1	13	MS-100	MOUNTING PLATE
1	12	TR-054	TRANSFORMER
2	11	NTC2520BNL	NUT, CAP
2	10	GA-100	GASKET, NEOPRENE
2	9	GA-101	GASKET, CORK
2	8	GA-104	GASKET, RING NEOPRENE
2	7	FW25LBN	WASHER, FLAT
16	6	FW25MSS	WASHER, FLAT
12	5	NTH2520SS14	NUT, HEXAGON
2	4	A-100	INSULATOR STUB, SUB-ASSEMBLY
2	3	NS-101	INSULATOR, INSIDE
2	2	NS-100	INSULATOR, OUTSIDE
1	1	PM-106	CASE, MACHINING

NOTE: FOR USE WITH 1/2" 70Ω STYROFLEX CABLE SEE A-1048

SYM	ZONE	DESCRIPTION	DATE	CH. NO.	DRAFTS	CHECKER	ENG. APP.
		UNLESS OTHERWISE SPECIFIED:	SCALE - DO NOT SCALE				
		DIMENSIONS ARE IN INCHES	MAXIMUM ALLOWABLE TOLERANCES HAVE BEEN DETERMINED AND ANY DEVIATIONS WILL BE CAUSE FOR REJECTION. REMOVE ALL BURRS & SHARP EDGES				
		TOLERANCES ON FRACTIONS ± 1/64	DECIMALS ± .005	ANGLES ± 1/2°			

1	RAC-20			5-11-61
REQ. PER UNIT	MODEL	SECTION	ASS'Y. NO.	DATE

REC	PART NO.	DESCRIPTION	SYMBOL
THE TECHNICAL MATERIEL CORP. MAMARONECK, NEW YORK			
MAIN ASSEMBLY FOR MODEL RAC-20			
MATERIAL			
John C. Biele			
DRAWN		CHECKED	
TYPE & TEMPER		HEAT TREAT. SPEC.	
FINISH & SPEC. NO.			
ELEC. DES. APP.		MECH. DES. APP.	
SHEET		OF	