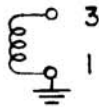
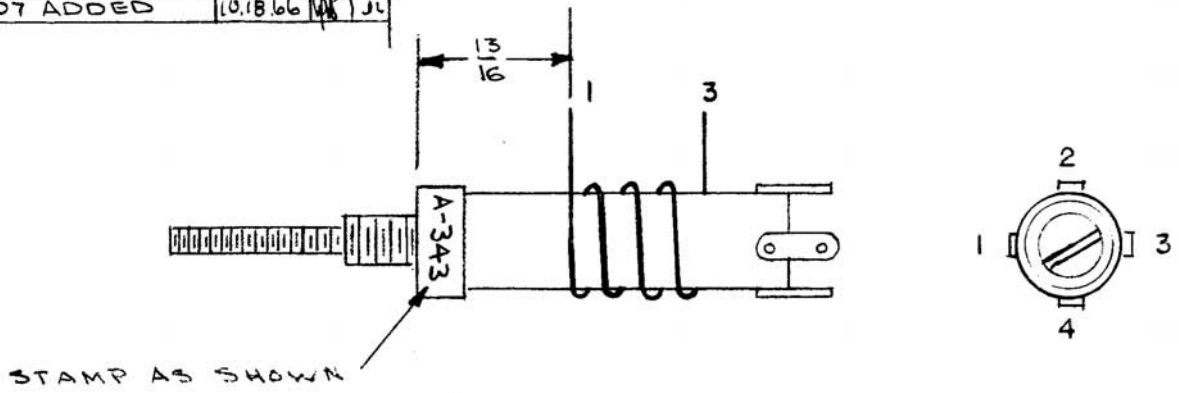


A-343-B

SYM	DESCRIPTION	DATE	APP
A	STAMPING ADDED	6/3/54	[Signature]
B	WI107 ADDED	10.18.66	[Signature]



WINDING 1-3, 9 TURNS OF #20 DSG (WI107-1)

1. ALL WINDINGS ARE SINGLE LAYER TIGHT WOUND SOLENOIDS,
2. USE SPOTTING CEMENT WHERE NECESSARY.
3. BAKE COIL OUT FOR 30 MINUTES AT 100° C.
4. PAINT COIL WITH INSULX-U-85, AND BAKE 1 HOUR AT 100° C.

Coil Form - CTC-LSA Form With
 #20063K (Med freq.) Slug.
 TMC Part CF-106-1

NOTE:
 USED ON ASSY A-752

Test Data - Q-Meter

Wind.	Freq MC	Slug. POS	Ind. Micro Henrie	Cap mmf	Q
1-3	7.9	Min L	1	405	90
1-3	7.9	Max L	1.7	240	95

* Min L is when slug is as close to the mounting base as possible.

SUPERCEDES AEM 012

DATE 6-18-51	TUNING SECTION OF T5	THE TECHNICAL MATERIEL CORPORATION MAMARONECK, NEW YORK	
DRN. [Signature]			
CHKD. [Signature]			
APPD. A. S. J.			
MODEL XFK		SHEET OF	NO. A-343 B

A-343-B