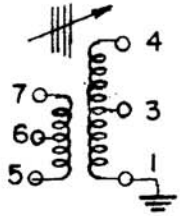
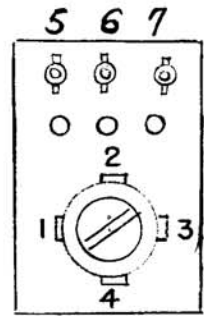
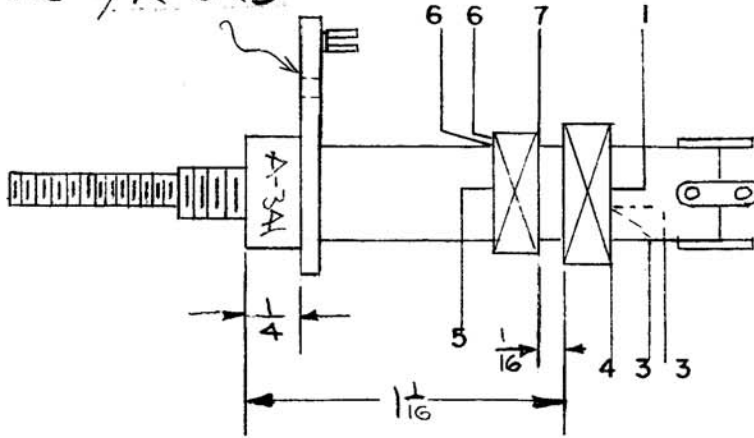


A-341-F

LD132 / A-349



WINDING 1-3, 42 TURNS W1104-5/41-SC-QS  
 WINDING 3-4, 18 TURNS W1104-5/41-SC-QS  
 WINDING 5-6, 21 TURNS W1104-5/41-SC-QS  
 WINDING 6-7, 21 TURNS W1104-5/41-SC-QS

UNIVERSAL WINDING  
 DOUBLE CROSS OVER  
 GEARS { DRIVER - 87  
 CAM - 43  
 CAM WIDTH - 1/8"  
 WIRE - W1104-5/41-SC-QS

NOTES:

1. USE SPOTTING CEMENT WHERE NECESSARY.
2. BAKE COIL OUT FOR 30 MINUTES AT 100° C.
3. PAINT COIL WITH INSULX-U-85 AND BAKE 1 HOUR AT 100° C.
4. NUMBER OF TURNS IS APPROXIMATE

Coil form CTC - LSA form with  
 # 200G3K (Med. freq.) Slug.  
 (TMC PART CF-106-1)

SUPERCEDES  
 AEMO10

USED ON  
 A-684

# D.C. Resistance of 1-4 is 2.75 ohms

\* Min L is when slug is as close to the mounting base as possible.

Test Data Q-Meter

Wind.	Freq MC	Slug *Pos.	IND. MICRO HENRI	cap mmf	Q ±5%
# 1-4	2.5	Min L	<90	50	54
1-3	2.5	Min L	<44	103	50
6-5	2.5	Min L	<11.7	386	50
6-7	2.5	Min L	<12.0	373	36
1-4	.790	Max L	>100	373	95

10.18.66 DATE  
 17064 CH.NO.  
 DRAFTS CHECKER ENG. APP.  
 WND  
 DESCRIPTION  
 LD132 ADDED; W1107-11 ADDED  
 F SYM

DATE 6-18-51  
 DRN. *[Signature]*  
 CHKD. *[Signature]*  
 APPD. *[Signature]*

T - 4  
 MODEL XF K

THE TECHNICAL MATERIEL CORPORATION  
 MAMARONECK, NEW YORK  
 SHEET OF NO. A-341 F

A-341-F