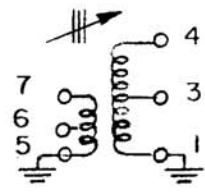
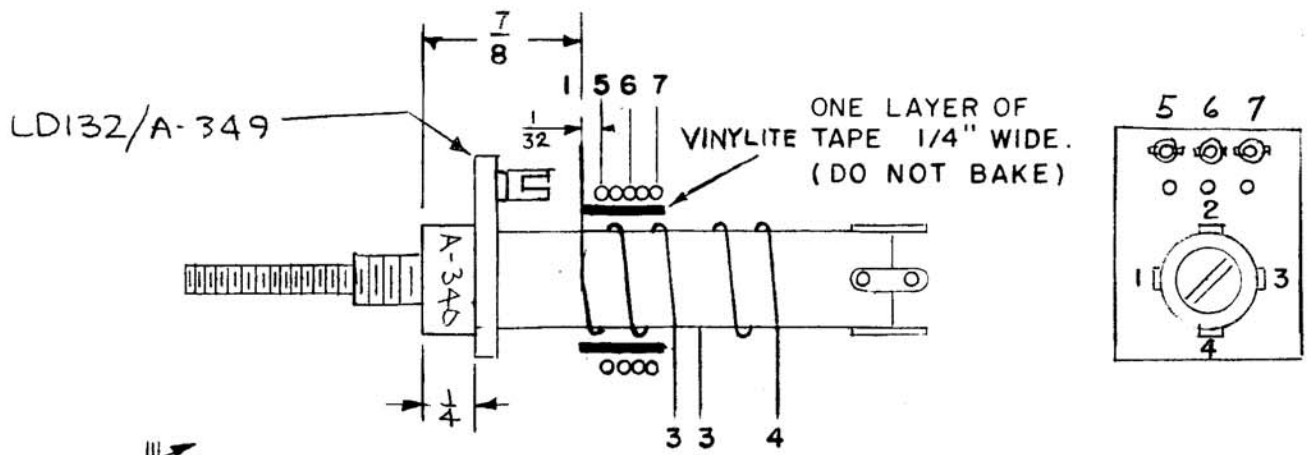


A - 340-D



WINDING 1-3, 20 TURNS OF # 30 DSC
 WINDING 3-4, 11 TURNS OF # 30 DSC
 WINDING 5-6, 9 TURNS OF # 36 DSC
 WINDING 6-7, 9 TURNS OF # 36 DSC

WI107-11

1. ALL WINDINGS ARE SINGLE LAYER TIGHT WOUND SOLENOIDS.
2. WIND 1-3, 3-4, FIRST THEN FOLLOW NOTES 3,4,5.
3. USE SPOTTING CEMENT WHERE NECESSARY.
4. BAKE COIL OUT FOR 30 MINUTES AT 100° C.
5. PAINT COIL WITH INSULX-U-85 AND BAKE 1 HOUR AT 100° C.
6. APPLY TAPE, WIND 5-6, 6-7. THEN COAT WITH MAAS & WALDSTEIN 45 INSULATING LACQUER AND AIR DRY.

Coil form CTC-LS4 Form With
 #20063K (Med. freq.) Slug.
 TMC PART CF-106-1

USED ON A-684 Pg 3

SUPERCEDES
 AEM 009

* Min L is when slug is as close to the mounting base as possible.

Test Data Q-Meter

Winding	Freq. Mc.	Slug Pos.	Ind. Micro Henrys ±10%	Cap mmf	Q min.
1-4	7.9	Min L	9.8	42	120
1-3	7.9	Min L	5.2	79	90
6-5	7.9	Min L	2.0	203	25
6-7	7.9	Min L	2.0	208	25
1-4	2.5	Max L	16.8	242	96

DATE	6-15-51	T-3	THE TECHNICAL MATERIEL CORPORATION		
DRN.	A.J.J.		MAMARONECK, NEW YORK		
CHKD.	EJ		SHEET	OF	NO. A-340
APPD.	A. J. J.		D		
		MODEL XFK			

REV. D WBS 12-11-51 ADDED; AMS 128 DEL. 10-18-66 17064
 REV. C Q ON WINDINGS 6-5,6-7 WAS 354-8-64 10789 A.M.
 REV. B NOTE 7 DEL. DWS UPDATED 11/14/63-RQ 10421-
 REV. A NOTE 7 ADDED 10/14/63-10183-
 NOTE 7 ADDED 10/14/63-10183-

A-340-D