

IF IT IS FOUND DESIRABLE TO CHANGE ANY TOLERANCE OR OTHER DETAIL SPECIFIED ON THIS DRAWING NOTIFY THE PURCHASER PROMPTLY.

MAXIMUM ALLOWABLE TOLERANCES HAVE BEEN DETERMINED AND DEVIATIONS WILL BE CAUSE FOR REJECTION. REMOVE ALL BURRS AND SHARP EDGES

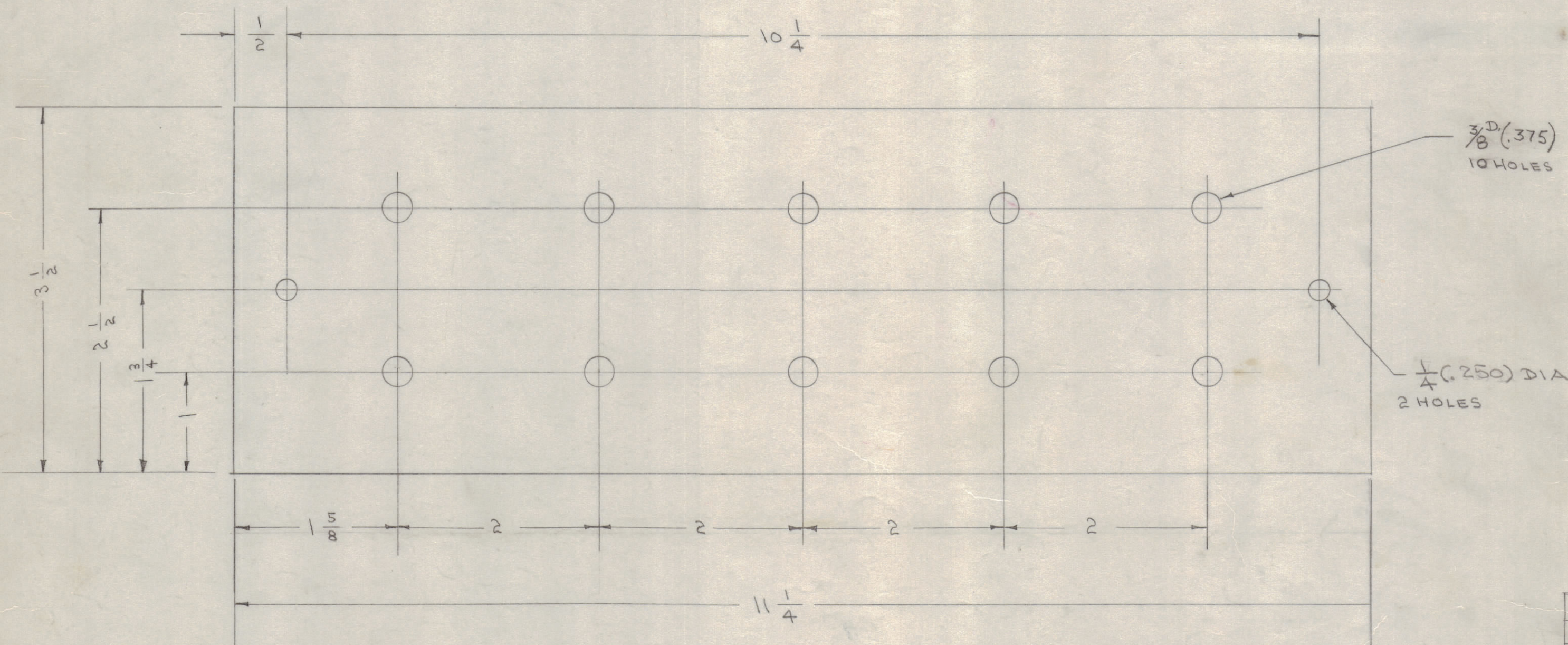
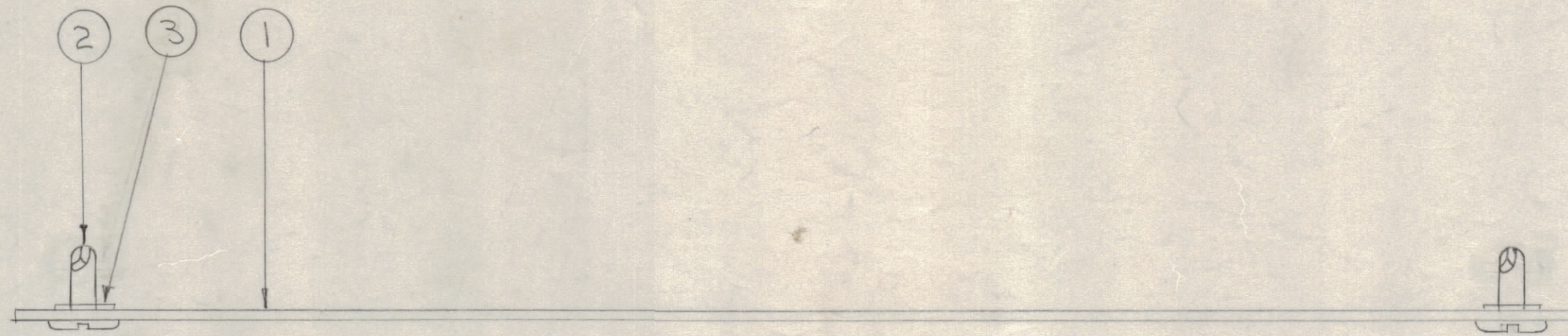
RELEASED

NOTICE TO PERSONS RECEIVING THIS DRAWING

THE TECHNICAL MATERIEL CORPORATION claims proprietary right in the material disclosed herein. This drawing is issued in confidence for engineering information only and may not be reproduced or used to manufacture anything shown hereon without permission from THE TECHNICAL MATERIEL CORPORATION to the user. This drawing is loaned for mutual assistance and is subject to recall at any time.

Property of:

THE TECHNICAL MATERIEL CORPORATION
MAMARONECK, NEW YORK



A-316 C

BLANK SIZE
3 1/2 X 11 1/4

C	1	S-404-IRIDITE WAS 5/01-CAUSTIC DIP	12-8 59	1001	Y		EMN
B	3	ITEM 3 WAS FN-105					
B	2	1/4 HOLE WAS 7/32	1/10/6	2	CHD	JHE	WDC
B	1	ITEM 2 WAS FS-105-3					
A	1	3/8 HOLES WERE 5/16	2-11-53	1	WDR	POB	POB
ISSUE	ITEM	CHANGED FROM	DATE	CN. NO.	DRAFTS	CHECKER	ENG. APP.
TOLERANCES		SCALE:					
ALL OTHERS	DEC. DIM. ± FRAC. DIM. ± ANGULAR DIM. ±	DRILL, PUNCH, COMMERCIAL STOCK SIZES AND MANUFACTURERS TOLERANCES ARE NOT INCLUDED.					

1	MSR-4			6-20-58
1	MSR-3			6-20-58
1	MSR-1			11-21-56
1	FFR	104	A-122	12-12-52
REQ PER UNIT	MODEL	PROJECT NO.	ASSY. NO.	DATE
USED ON				

2	3	FS-109-3	RING, RETAINING	
2	2	FS-110-1	STUD	
1	1	MS-182	COVER, P.S. (NO DRAWING)	
REQ.	ITEM	PART NO.	DESCRIPTION	SYMBOL
		.051 THK.	THE TECHNICAL MATERIEL CORP.	
		STOCK SIZE	MAMARONECK, NEW YORK	
		ALUMINUM	COVER ASSEMBLY	
		MATERIAL	POWER SUPPLY	
		5052-H 32	C.D.D. 12-11-52	
		TYPE & TEMPER	DRAWN	
			ELEC. DES. APP.	
			MECH. DES. APP.	
		HEAT TREAT. SPEC.	CHECKED	
		S404-YEZ. IRIDITE	FINAL APPROVAL	
		FINISH & SPEC. NO.	A-316 C	