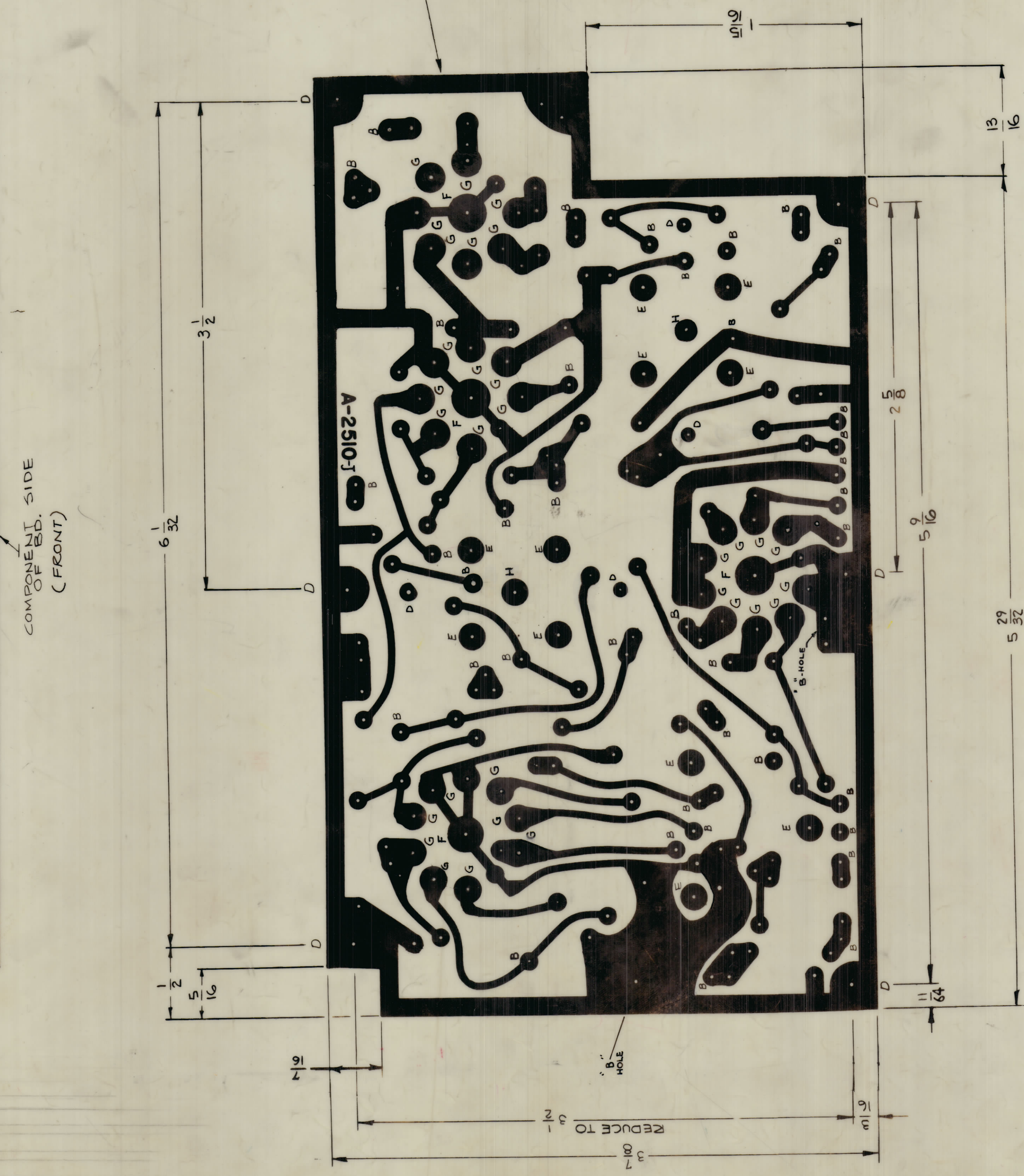
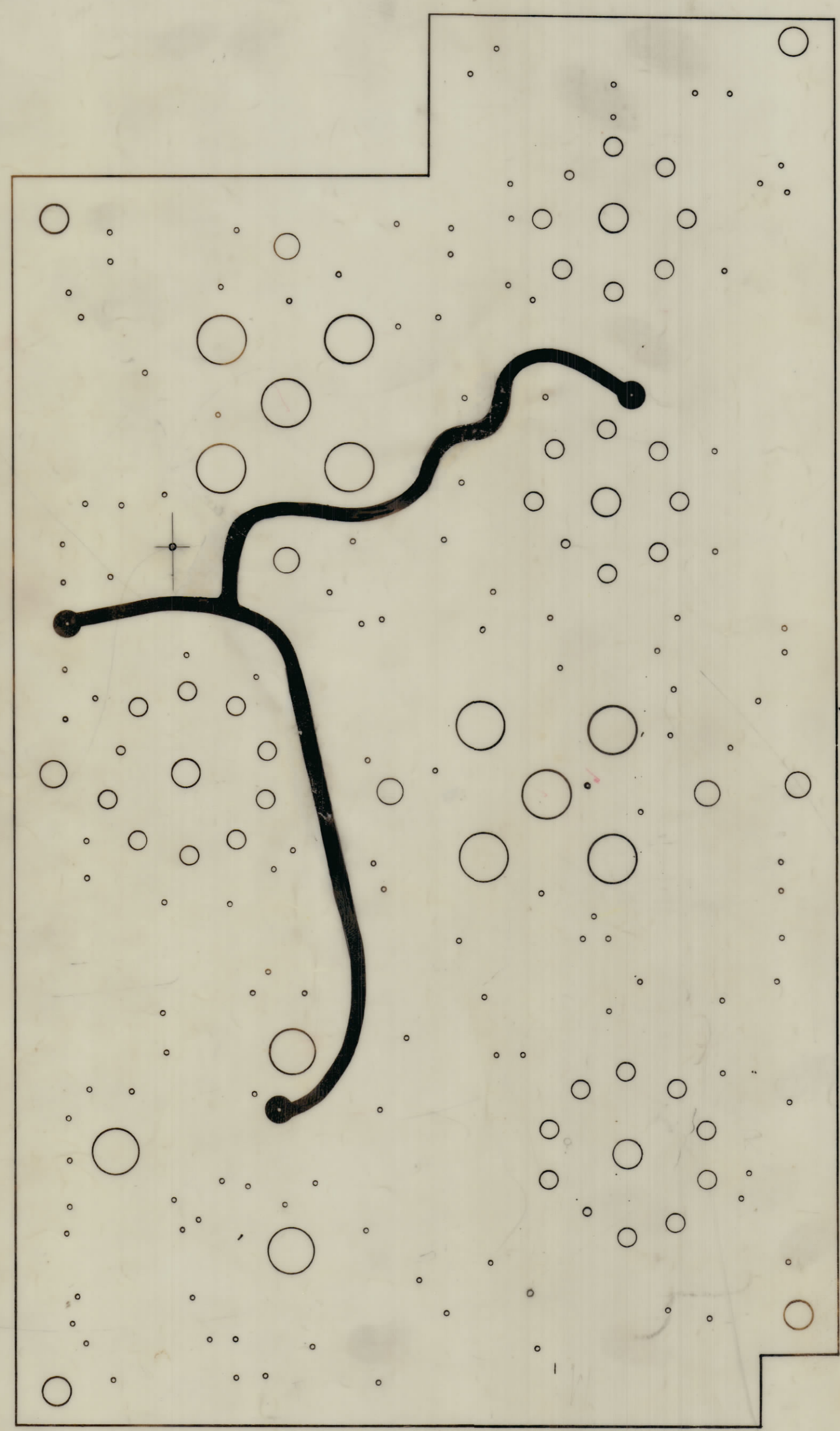


REVISIONS						
ZONE	SYM	DESCRIPTION	DATE	E.M.N. NO.	DRAFT	CHKD
-	E	REVISED & REDRAWN	10/7/63	10199	AP	MP
+	F	ADDED (2) 1/4" HOLES, RE-ROUTED FOIL ON FRONT VIEW. UPDATED BOTH VIEWS & CLARIFIED DWG.	11/1/63	10750	AP	MP
D, E, S	G	DELETED (1) UNMARKED HOLE, CHANG. QUANT. OF HOLES (CHANG. (2) UNMARKED HOLES TO "G" HOLES) TO 40 AND 38	12-20-64	11055	APB	MP
-	H	SEE SHEET 2 OF 2	1-25-64	11655	A.M.	MP
+	J	4 "C" HOLES CHANGED TO "D" HOLES	7-24-64	11738	APB	MP
+	K	SEE SHEET 2 OF 2 REV. "K"	12-11-64	13090	AP	MP



- NOTES:
- MAT'L: SYNTHANE G-11 EPOXY GLASS LAMINATE 3/32 THK., .002 COPPER CLAD, (2) SIDES.
 - DO NOT PRINT LETTER DESIGNATIONS AS SHOWN ON BOARD.
 - HOLES ARE TO BE "PLATED-THRU" WITH MIN. COPPER PLATING THICKNESS OF .0015 & MIN. SOLDER-PLATE (TIN) THICKNESS OF .0005 MIN. FINISHED DIA OF "PLATED-THRU" HOLES.
 UNMARKED - .050
 F - .136
 G - .093
 - ETCHED CKT TO BE TINNED .0005
 - SEE PURCHASING NOTE.

HOLE SCHEDULE		
HOLE	DESCRIPTION	REQD
UNMARKED	# 53 (.059) DR.	AR *
B	# 42 (.093) DR.	40
C	DELETED	
D	5/32 DIA	10
E	1/4 DIA	11
F	# 27 (.144) DR.	4 *
G	# 38 (.101) DR.	32 *
H	5/16 DIA	2

PURCHASING NOTE:
 ORIGINAL ART WORK TO BE SUPPLIED TO VENDOR FOR MANUFACTURING. ART WORK MUST BE RETURNED TO TMC IN GOOD CONDITION AS SOON AS POSSIBLE.
DO NOT FOLD ORIGINAL

1	GPR-92	A-2510
QTY./UNIT	MODEL USED ON	ASBY. NO.
SCALE	CODE	
APPROX.	A	

REQ'D.	ITEM	PART NUMBER	DESCRIPTION	SYMBOL
LIST OF MATERIAL				
MATERIAL		THE TECHNICAL MATERIEL CORP. MAMARONECK, NEW YORK		
FINISH		TITLE PRINTED ELECTRICAL CIRCUIT GPR-92 #3		
UNLESS OTHERWISE SPECIFIED DIMENSIONS ARE IN INCHES AND INCLUDE CHEMICALLY APPLIED OR PLATED FINISHES		DRAWN	DATE	FINAL APPROVAL
DECIMALS: .X ± .05 .XX ± .01 .XXX ± .005		10-7-63	10-7-63	BP
TOLERANCES: ± 1/64 ANGLES: ± 30' ± 30'		CHECKED	DATE	
		10-7-63		
		ELECT. DES.	DATE	
		MECH. DES.	DATE	
		SHEET	1 OF 2	
		REV. LTR.		K

NOTES

A-2510 K