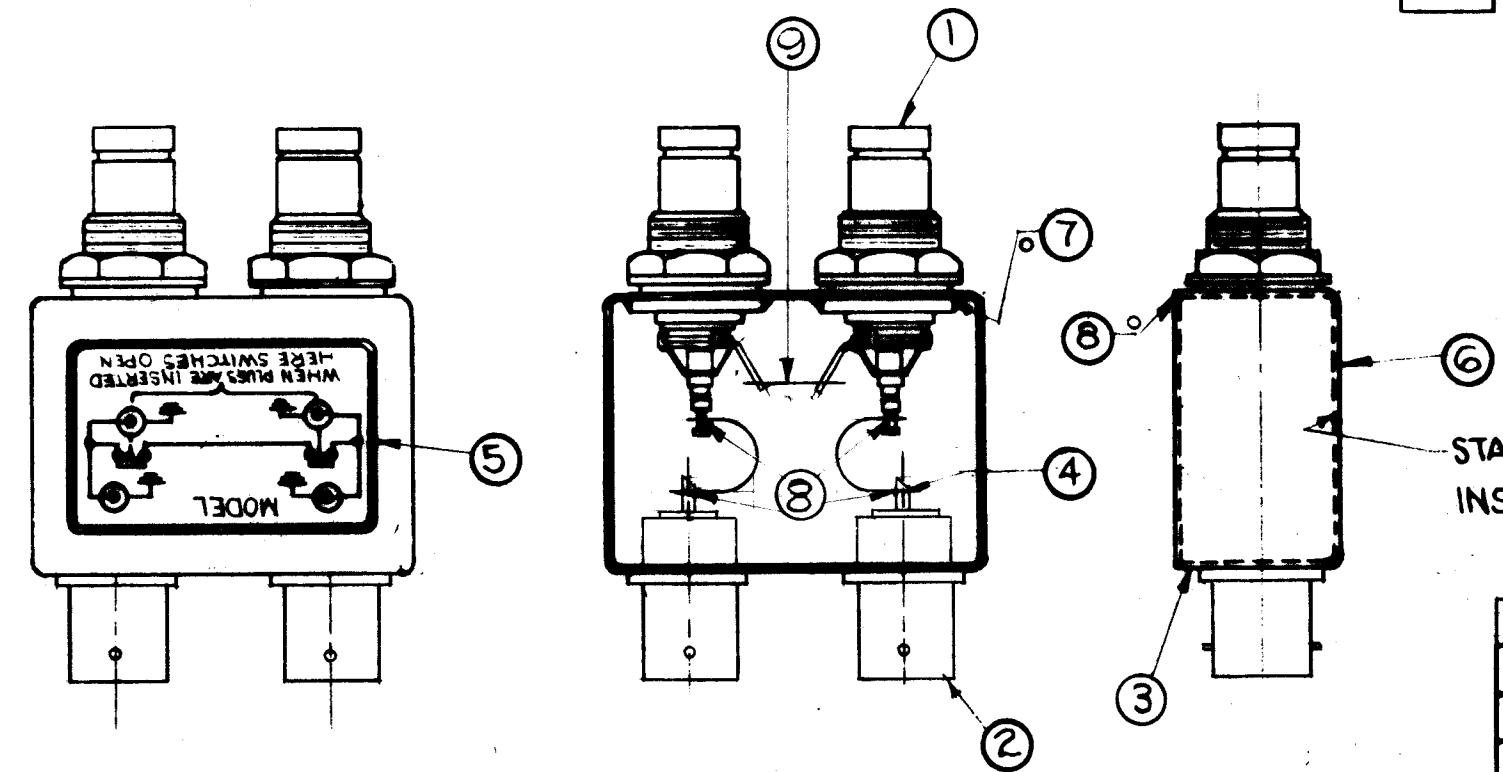


A-2461 B

REVISIONS

SYM	DESCRIPTION	DATE	E.M.N. NO.	DRAFT	CHKD	APPD
A	ITEM (4) WAS MS-2983-4	4-10-63	B78G	RS	WY	
B	ITEM (4) WAS MS 2983-6	1-30-84		GDL		



1. INDUCTION HEATING EQUIPMENT SET AT:  
     AMPERES -  
     SECONDS -
  2. USE ITEM SEVEN (7) FOR MOUNTING ITEMS ONE (1) AND TWO (2).
  3. USE ITEM EIGHT (8) FOR SEALING COVER ITEM THREE (3).
  4. STRAP (ITEM 4) MUST BE KEPT AS FLEXIBLE AS POSSIBLE. DO NOT ALLOW SOLDER TO RUN OVER STRAP. LAY STRAP IN SO THAT IT CANNOT TOUCH CAN OR CONNECTOR BODIES.
  5. FINISH AS FOLLOWS:  
     S-114 - ZINC CHROMATE PRIMER  
     S-115 - TMC SMOOTH GREY ENAMEL  
     (DO NOT PAINT CONNECTOR BODIES.)
  6. AFFIX ITEM FIVE (5) TO FRONT AS SHOWN.
  7. AFFIX ITEM SIX (6) TO REAR AS SHOWN.
- - DENOTES SOLDER ALL AROUND

REQ'D.	ITEM	PART NUMBER	DESCRIPTION	SYMBOL
X	10	S-691	TEST PROCEDURE	
1"	9	WL-100-5	WIRE, BUSS-BAR #18	
X	8	BS-106-2	SOLDER, SOFT 361°	
X	7	BS-106-4	SOLDER, SOFT 450°	
1	6	NP-488	NAMEPLATE IDENTIFICATION (FOIL CAL.)	
1	5	NP-490-3	SCHEMATIC, DIAGRAM (FOIL CAL.)	
2	4	WL 103-2	BRAID, WIRE FLAT	
1	3	BX-200-2	CASE, COVER	
2	2	JJ-255	ADAPTOR CONNECTOR	
2	1	JJ-239	ADAPTOR, CONNECTOR	

LIST OF MATERIAL

MATERIAL	SEE LIST	THE TECHNICAL MATERIEL CORP. MAMARONECK, NEW YORK			
FINISH	SEE NOTE NO.5	TITLE SW-310 ASSEMBLY			
UNLESS OTHERWISE SPECIFIED DIMENSIONS ARE IN INCHES AND INCLUDE CHEMICALLY APPLIED OR PLATED FINISHES		DRAWN	DATE	FINAL APPROVAL	DATE
		A. Jurchin	6-8-62		
		CHECKED	DATE		
		JW			
		ELECT. DES	DATE		
		MECH. DES	DATE		
			6/27/62		
		SHEET			REV. LTR.
		A-2461			B

1	SW-310	A-2461
Q'TY./UNIT	MODEL USED ON	ASSY. NO.
SCALE	CODE	
DO NOT SCALE		
THE CONTENTS OF THIS DRAWING ARE THE EXCLUSIVE PROPERTY OF THE TECHNICAL MATERIEL CORP. ITS UNAUTHORIZED USE OR REPRODUCTION IN WHOLE OR IN PART IS STRICTLY FORBIDDEN.		

NOTES