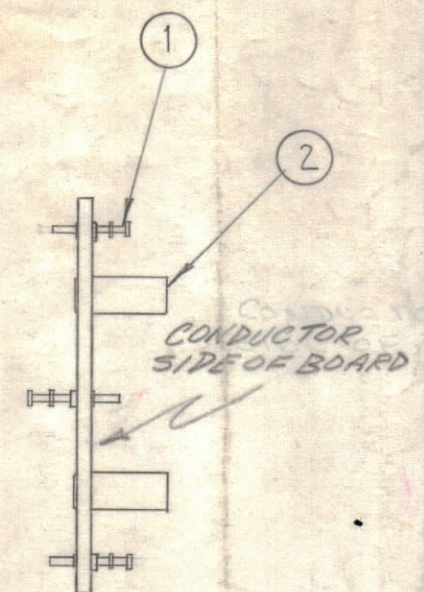


A2447-3

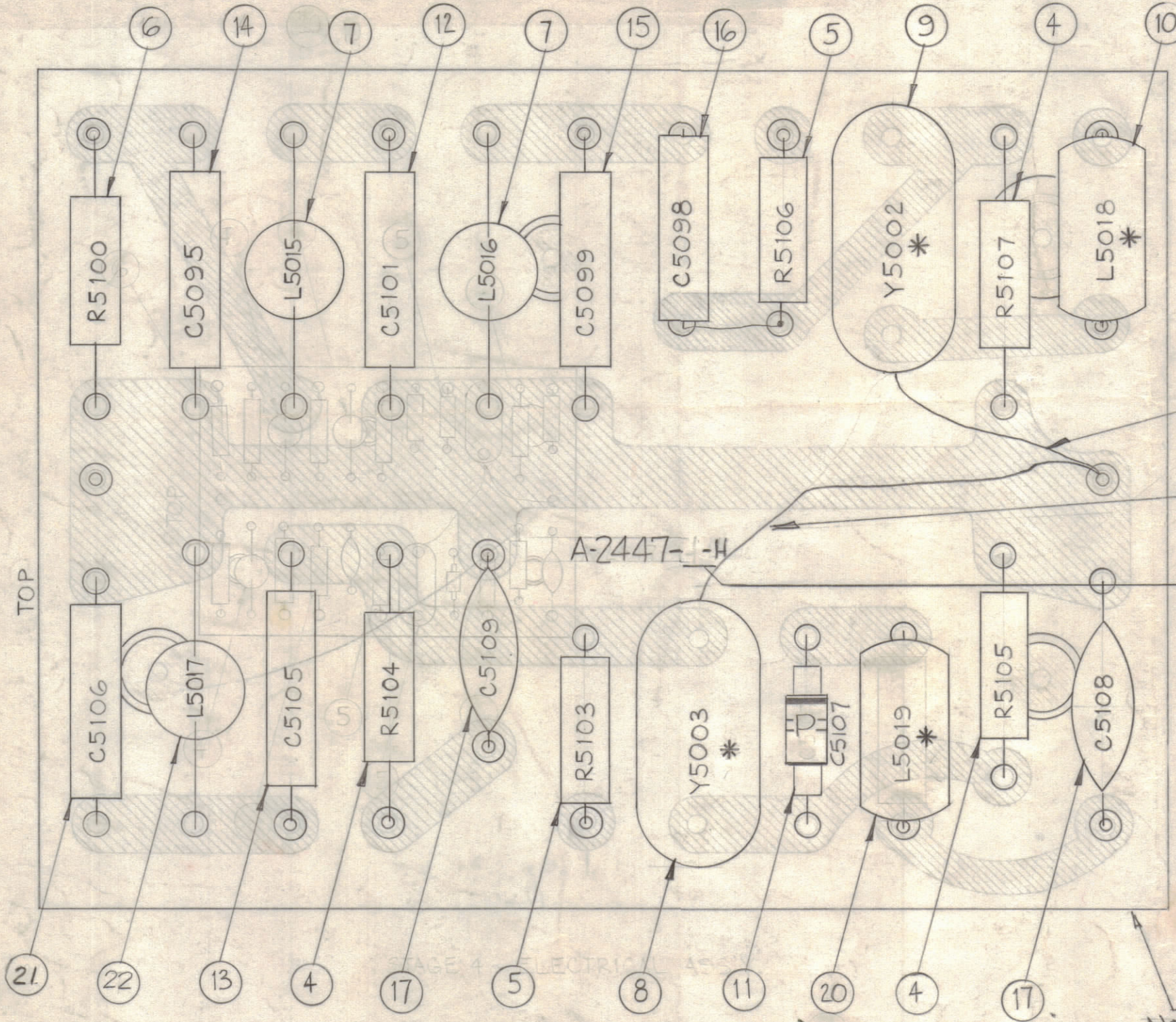


STAGE 3 - SUB-ASS'Y.
REF: SHEET 1 FOR LOCATION OF ITEMS 1, 2 & 18.

REVISIONS						
ZONE	SYM	DESCRIPTION	DATE	E.M.N. NO.	DRAFT	CHKD
C2	A	ITEM (11) WAS CX-106-2	1-15-62	8025		
F3	B	NOTE ADDED	6-4-63	9196		
-	C	IT. (2) P/N WAS "TE 196 B1184"	1-5-65	13217		
F2	D	CLERICAL CHANGE	1-24-65	15433		
-	E	TMC CHT. B/M CHT. REVISED MODEL Nos. APP'D	1-24-65	15433		
-	F	ITEM 18 DELETED (EY106-4GB) ASS'Y PROCEDURE NOTE 1 & 2 CLARIFIED, SEE SHEET 1 OF 2	10-11-66	17021		
-	G	B/M UPDATED; PT/NO. CHART UPDATED	12-20-66	17548		
-	H	STAGE 2 TRANSFERRED TO SHEET 1	1-4-68	18698		
-	J	REVISED & UPDATED	5-27-69	19465		

TMC P/N	MODEL	ITEM 8*	REQ	ITEM 10*	REQ	ITEM 20*	REQ	FREQ	ITEM 13	REQ	ITEM 21	REQ	ITEM 22	REQ
A-2447-4	AFC-3	CR-109-5	1	CL-270-22	1	CL-270-15	1	2 MC	CM15C220J03	1	CM15C820J03	1	CL275-151	1
A-2447-5	AFC-2A AFC-7	CR-109-4	1	CL-270-18	1	CL-270-18	1	705 KC	CM15C220J03	1	CM15C820J03	1	CL275-151	1
A-2447-6	AFC-8	CR-109-85	1	CL-270-18	1	CL-270-18	1	350 KC	CM15C220J03	1	CM15C510J03	1	CL275-100	1

NOTE: ITEMS MARKED WITH ASTERISK (*) ARE FACTORY SELECTED FOR EACH UNIT. VALUES AND PART NUMBERS INDICATED ARE TYPICAL ONLY.

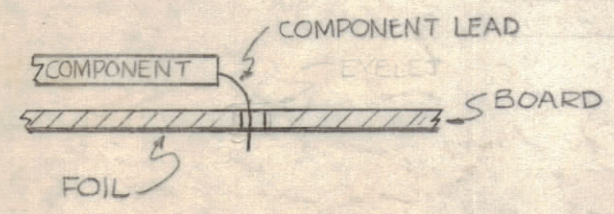


3 SOLDER ITEM 3 TO CASE OF ITEMS 8 & 9.

STAMP 4-5-OR-6 AS APPLICABLE WHEN ASSY IS COMPLETE (SEE CHART)

A2447-X
SEE CHART

NOTE: FOR PRINTED CIRCUIT DIAGRAM SEE SHEET 1 OF A-2447



STAGE 4 - ELECTRICAL ASS'Y. ASSEMBLY PROCEDURE

- 1) TO MOUNT COMPONENTS - INSERT LEAD THROUGH HOLE & BEND ABOUT 1/16" OF LEAD OVER COPPER FOIL AS SHOWN.
- 2) APPLY HEAT AND SOLDER LEAD TO FOIL. - CAUTION - TOO MUCH HEAT WILL CAUSE THE FOIL TO SEPARATE FROM THE BOARD.
- 3) DO NOT BEND CRYSTAL PINS - SOLDER THEM DIRECTLY TO FOIL.
- 4) CLEAN & INSPECT AS PER S-676.
- 5) CLEAN & INSPECT AS PER S-676.

NOTES

Q'TY./UNIT	MODEL USED ON	ASS'Y. NO.
1	AFC-8	
	AFC-7	
	AFC-2A	
	AFC-3	

THE CONTENTS OF THIS DRAWING ARE THE EXCLUSIVE PROPERTY OF THE TECHNICAL MATERIEL CORP. ITS UNAUTHORIZED USE OR REPRODUCTION IN WHOLE OR IN PART IS STRICTLY FORBIDDEN.

REQ'D.	ITEM	PART NUMBER	DESCRIPTION	SYMBOL
1	22	SEE CHART	COIL, RF	L5017
1	21	SEE CHART	CAP. FIXED, MICA	C5106
1	20	SEE CHART *	COIL, R.F. MOLDED	L5019
X	19	BS-100	SOLDER, SOFT	
	18	DELETED	EYELETS, #	
2	17	CM112F202655	CAPACITOR, FIXED MICA	C5108 C5109
1	16	CM15C390303		C5098
1	15	CM15F131J03		C5099
1	14	CM15B100K03		C5095
1	13	SEE CHART		C5105
1	12	CM15C820J03	CAPACITOR, FIXED MICA	C5101, 06
1	11	CX-106-11	CAPACITOR, VOLTAGE VARIABLE	C5107
1	10	SEE CHART *	COIL, R.F. MOLDED	L5018
1	9	CR-109-3 *	CRYSTAL UNIT, QUARTZ	Y5002
X	8	SEE CHART *	CRYSTAL UNIT, QUARTZ	Y5003
2	7	CL-275-151	COIL, R.F.	L5015, 16
1	6	RC20GF472J	RESISTOR, FIXED CARBON	R5100
2	5	RC20GF470J	RESISTOR, FIXED CARBON	R5103, 06
3	4	RC20GF104J	RESISTOR, FIXED CARBON	R5104, 05 07
X	3	WL-100-7	WIRE, BUSS # 22	
3	2	TE 164-16	STAND-OFF, RIVET TYPE	
11	1	TE-168-4-B	TERMINAL, MINIATURE	

W. WESCHLER LIST OF MATERIAL

MATERIAL: THE TECHNICAL MATERIEL CORP. MAMARONECK, NEW YORK

FINISH: TITLE PRINTED, ELECTRICAL CIRCUIT & COMPONENT ASSY. H.F. OSC.

UNLESS OTHERWISE SPECIFIED DIMENSIONS ARE IN INCHES AND INCLUDE CHEMICALLY APPLIED OR PLATED FINISHES

DECIMALS: .X ± .05, .XX ± .01, .XXX ± .005
FRACTIONS: ± 1/64, ANGLES ± 0° 30'

SCALE: O'TY./UNIT, CODE, ASS'Y. NO.

DRAWN: WAF, DATE: 5-22-62
CHECKED: HOC, DATE: 6/7/62
ELECT. DES.: WAF, DATE: 6/7/62
MECH. DES.: WAF, DATE: 6/7/62

DATE: 5-22-62
FINAL APPROVAL: OP
DATE: 6/7/62

REV. LTR.: J
SHEET: 2 OF 2