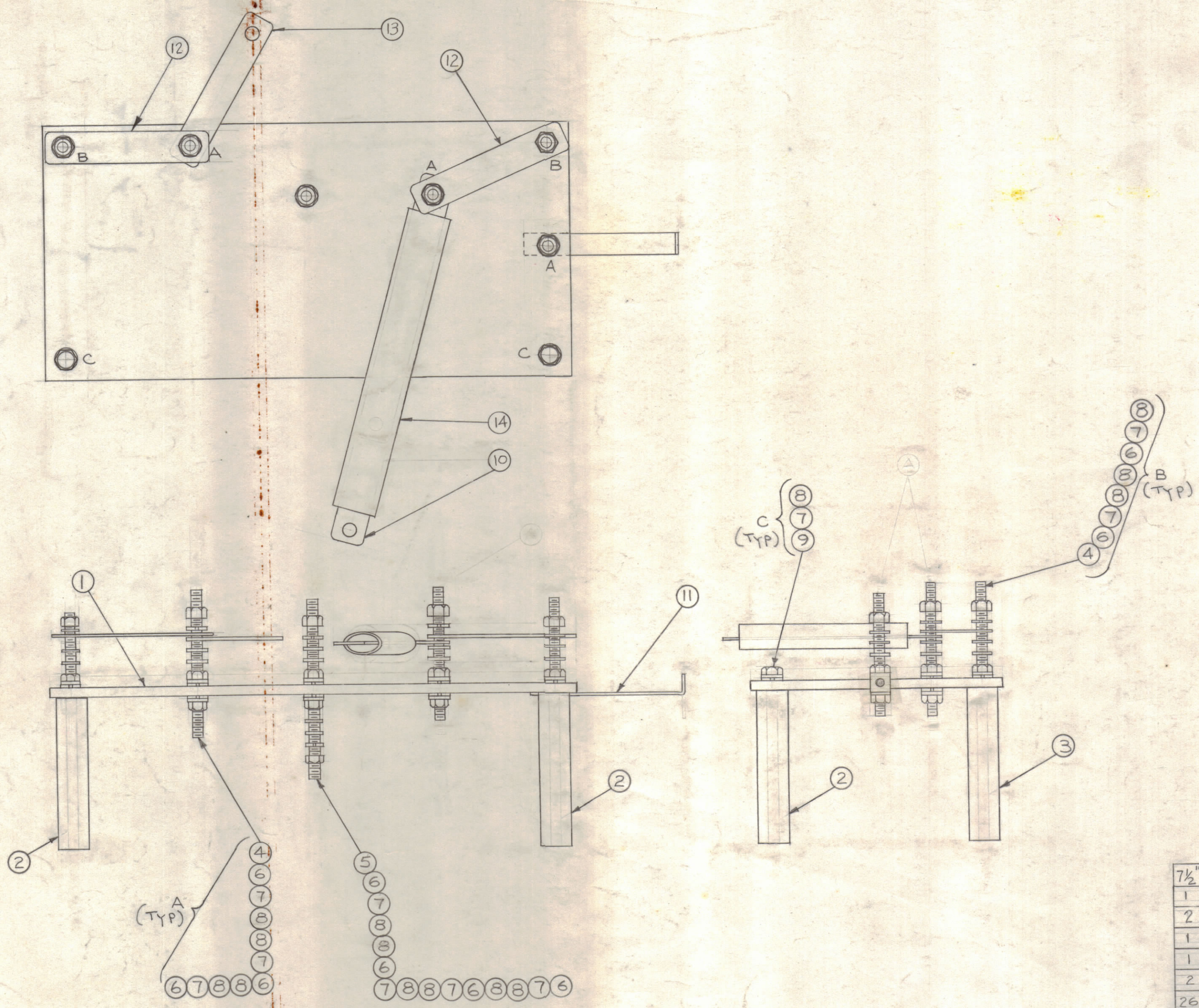


NOTICE TO PERSONS RECEIVING THIS DRAWING

THE TECHNICAL MATERIEL CORPORATION claims proprietary right in the material disclosed hereon. This drawing is issued in confidence for engineering information only and may not be reproduced or used to manufacture anything shown hereon without permission from THE TECHNICAL MATERIEL CORPORATION to the user. This drawing is loaned for mutual assistance and is subject to recall at any time.

Property of:  
THE TECHNICAL MATERIEL CORPORATION  
MAMARONECK, NEW YORK



REQ.	ITEM	PART NO.	DESCRIPTION	SYMBOL
7 1/2	14	PX-370-6-7	INSULATION, SLEEVING, TEFLON	
1	13	MS-2479	STRAP, ANTENNA TUNER INPUT	
2	12	MS-2478	STRAP, SWITCHING	
1	11	MS-2477	STRAP, UNBALANCED OUTPUT	
1	10	MS-2476	STRAP, DIRECTIONAL COUPLER INPUT	
2	9	SCHH2520BN12	SCREW, MACHINE	
26	8	FW25HBN	WASHER, FLAT	
19	7	LWS25MRN	LOCKWASHER, SPRING TYPE	
17	6	NTH2520BN14	NUT, HEX	
1	5	SM2520BN2.500	ROD, THREADED	
5	4	SM2520BN1.500	ROD, THREADED	
2	3	TE2520AE41R	SPACER, THREADED	
2	2	TE2520GR41R	SPACER, THREADED	
1	1	PX-597/LD-854	BOARD, ANTENNA SWITCHING	

A		BZ	ITEMS (4) WAS SM2520BN1.50, (5) WAS SM2520BN2.50 BZ, C, E, H, ITEM (1) WAS PX-597, ITEM (12) WAS 1 REQ, STRAP ADDED ON PICTORIAL	3-14-63	8530	RC	<i>[Signature]</i>	<i>[Signature]</i>
SYM	ZONE	DESCRIPTION		DATE	CH. NO.	DRAFTS	CHECKER	ENG. APP.
UNLESS OTHERWISE SPECIFIED:				SCALE 1/2 DO NOT SCALE				
DIMENSIONS ARE IN INCHES				MAXIMUM ALLOWABLE TOLERANCES HAVE BEEN DETERMINED AND ANY DEVIATIONS WILL BE CAUSE FOR REJECTION. REMOVE ALL BURRS & SHARP EDGES				
TOLERANCES ON FRACTIONS ± 1/64				DECIMALS ± .005		ANGLES ± 1/2°		

REQ. PER UNIT	MODEL	SECTION	ASSY. NO.	DATE
1	KIT-126			4-19-62
USED ON				

THE TECHNICAL MATERIEL CORP. MAMARONECK, NEW YORK		DRAWN		CHECKED		FINAL APPROVAL	
SWITCHING BOARD ASSY.		<i>[Signature]</i>		<i>[Signature]</i>		<i>[Signature]</i>	
MATERIAL		TYPE & TEMPER		HEAT TREAT. SPEC.		FINISH & SPEC. NO.	
						SS	
ELEC. DES. APP.		MECH. DES. APP.		SHEET		OF	
98		aa		A-2436		A	