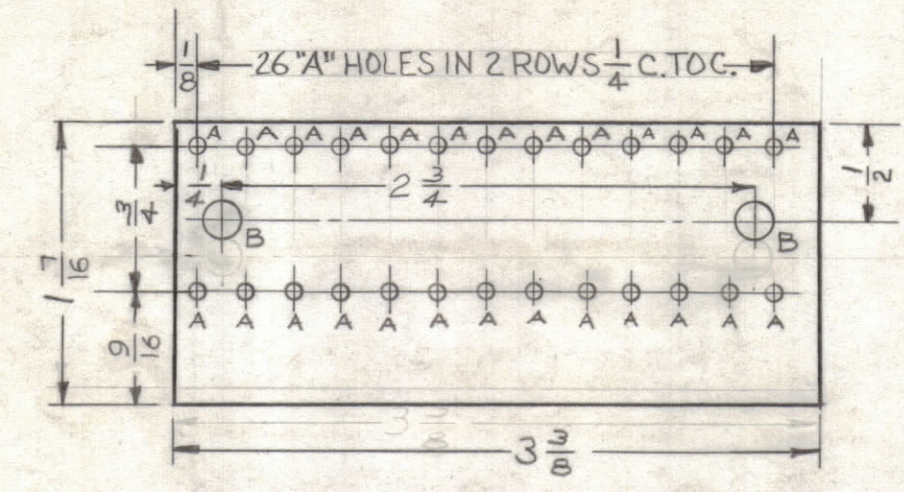
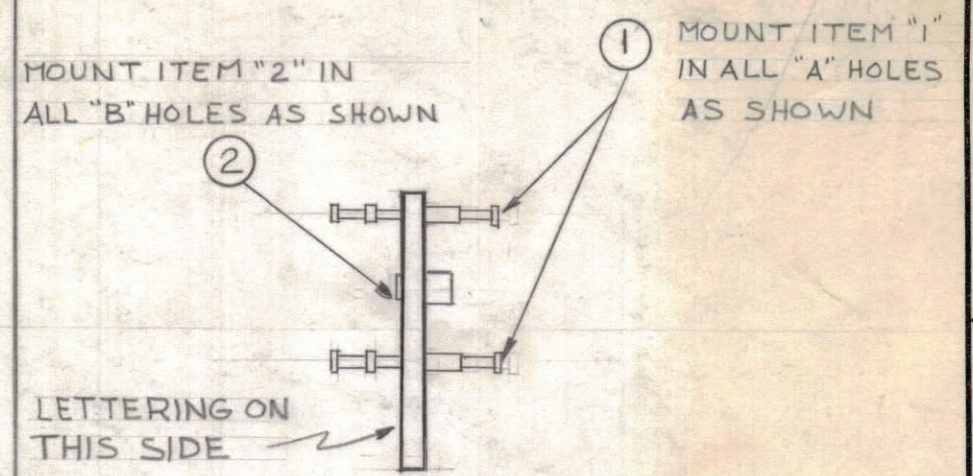
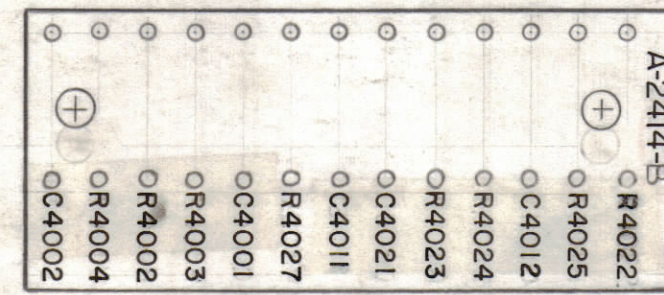


A-2414 B

LEGEND		
HOLE	DESCRIPTION	REQ
A	.073 DIA.	26
B	.189 DIA.	2

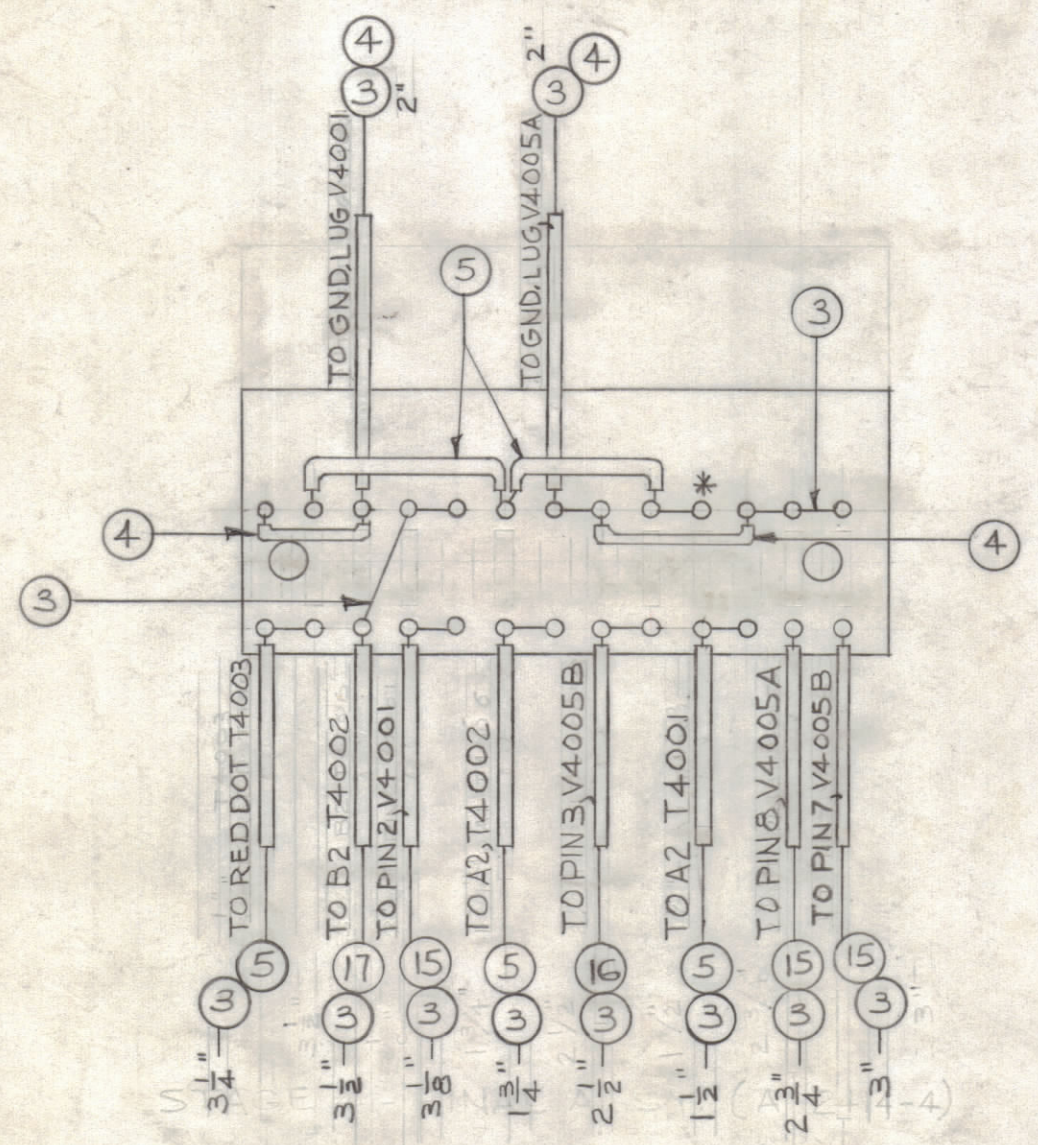
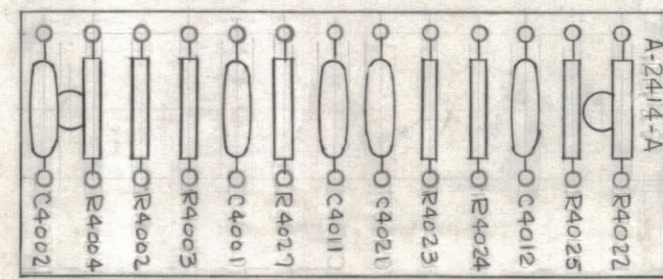
1/8" HIGH BLACK LUSTERLESS, GOTHIC LETTERING
 (PHOTODUPLICATION EQUIVALENT)
 MARKING PROCESS: AS PER TMC SPECIFICATION S-727



STAGE 1 - MACHINING (A-2414-1)
 MATERIAL - .062, XXXP, PHENOLIC FINISH - NATURAL

STAGE 2 - STAMPING (A-2414-2)
 LETTERING TO BE 1/8" HIGH BLACK GOTHIC

STAGE 3 - SUB-ASSY. (A-2414-3)



NOTE:
 ALL SLEEVING TO BE 1/2" SHORTER THAN BUSS WIRE.
 * DO NOT SOLDER THESE CONNECTIONS.

NOTICE TO PERSONS RECEIVING THIS DRAWING

THE TECHNICAL MATERIEL CORPORATION claims proprietary right in the material disclosed hereon. This drawing is issued in confidence for engineering information only and may not be reproduced or used to manufacture anything shown hereon without permission from THE TECHNICAL MATERIEL CORPORATION to the user. This drawing is loaned for mutual assistance and is subject to recall at any time.

Property of:
 THE TECHNICAL MATERIEL CORPORATION
 MAMARONECK, NEW YORK

C4002, C4011, C4012, C4021
 R4004, R4024, R4027

REQ.	ITEM	PART NO.	DESCRIPTION	SYMBOL
3 1/2	17	PX-104-4 - .034	INSULATION, SLEEVING (SIZE 20)	GRN.
2 1/2	16	PX-104-8 - .034	INSULATION, SLEEVING (SIZE 20)	ORN.
9"	15	PX-104-2 - .034	INSULATION, SLEEVING (SIZE 20)	YEL.
1	14	CC-100-28	CAPACITOR, FIXED CERAMIC DISC.	C4001
4	13	CC-100-24	CAPACITOR, FIXED CERAMIC DISC.	
1	12	RC20GF680K	RESISTOR, FIXED COMPOSITION	R4002
1	11	RC20GF392K		R4003
1	10	RC20GF153K		R4023
3	9	RC20GF472K		
1	8	RC20GF181K		R4025
1	7	RC20GF221K	RESISTOR, FIXED COMPOSITION	R4022
X	6	BS-100	SOLDER, SOFT	
9"	5	PX-104-3 - .034	INSULATION, SLEEVING (SIZE 20)	RED
6"	4	PX-104-1 - .034	INSULATION, SLEEVING (SIZE 20)	BLK
42"	3	WL-100-6	WIRE, BUSS (SIZE 20)	
2	2	TE-164-1	STANDOFF, RIVET TYPE	B
26	1	TE-168-4B	TERMINAL, MINIATURE	A

STAGE 4 - FINAL ASSY (A-2414-4)

SYM	ZONE	DESCRIPTION	DATE	CH. NO.	DRAFTS	CHECKER	ENG. APP.
B		LETTERING 'C4011' & 'C4012' WERE REVERSED	2-9-63	9365			
A	D3	LENGTHS ADDED TO ITEMS (3), (5), (15) TO (17) ON STAGE (2) & (4) ALL LETTERING TURNED 90°	2-9-63	8198			

UNLESS OTHERWISE SPECIFIED: SCALE DO NOT SCALE

TOLERANCES ON FRACTIONS ± 1/64 DECIMALS ± .005 ANGLES ± 1/2°

MAXIMUM ALLOWABLE TOLERANCES HAVE BEEN DETERMINED AND ANY DEVIATIONS WILL BE CAUSE FOR REJECTION. REMOVE ALL BURRS & SHARP EDGES

REQ. PER UNIT	MODEL	SECTION	ASS'Y. NO.	DATE
1	HNF-1			7-26-62

REQ.	ITEM	PART NO.	DESCRIPTION	SYMBOL
THE TECHNICAL MATERIEL CORP. MAMARONECK, NEW YORK				
TERMINAL BOARD AND COMPONENT ASSEMBLY				
DRAWN		CHECKED		FINAL APPROVAL
FINISH & SPEC. NO.		ELEC. DES. APP.		MECH. DES. APP.
		A-2414		B
		SHEET		OF