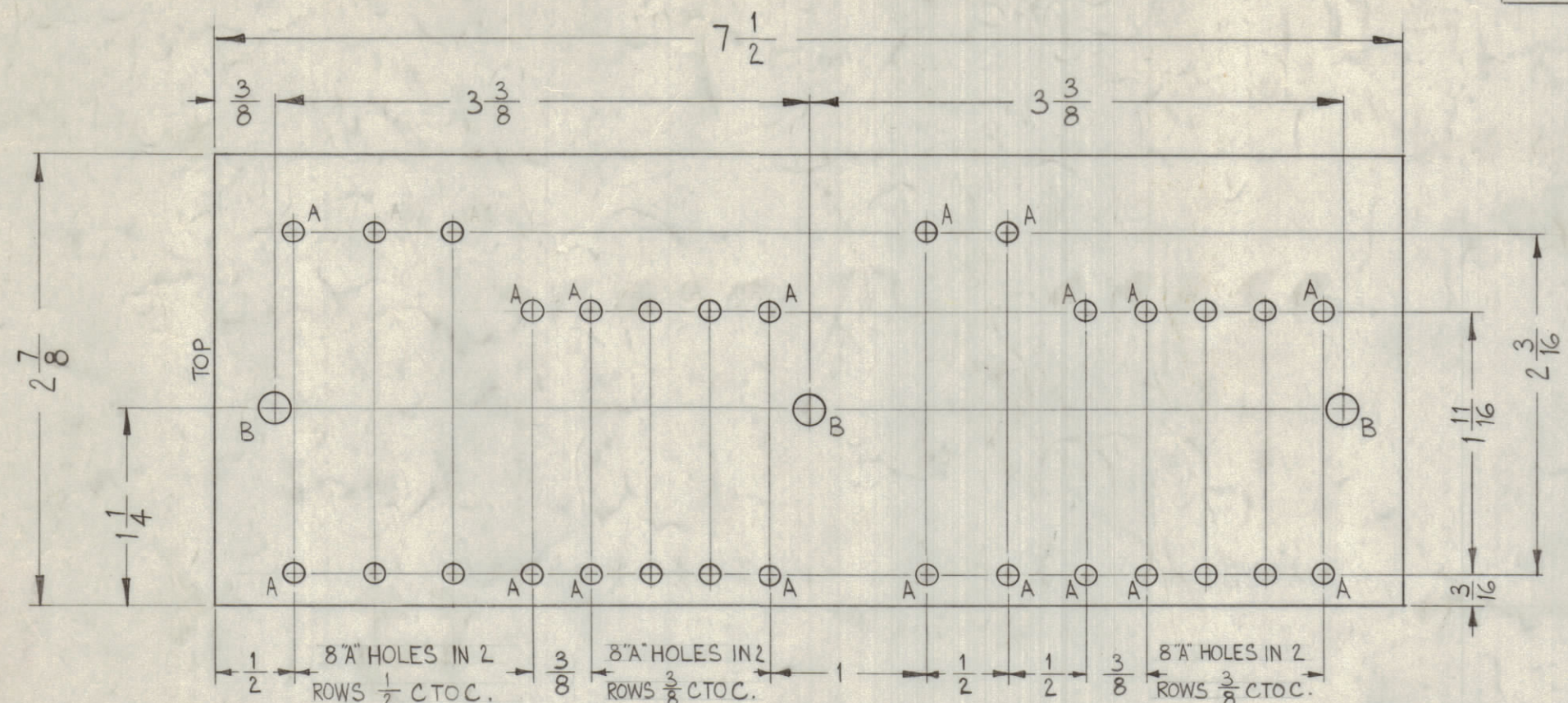
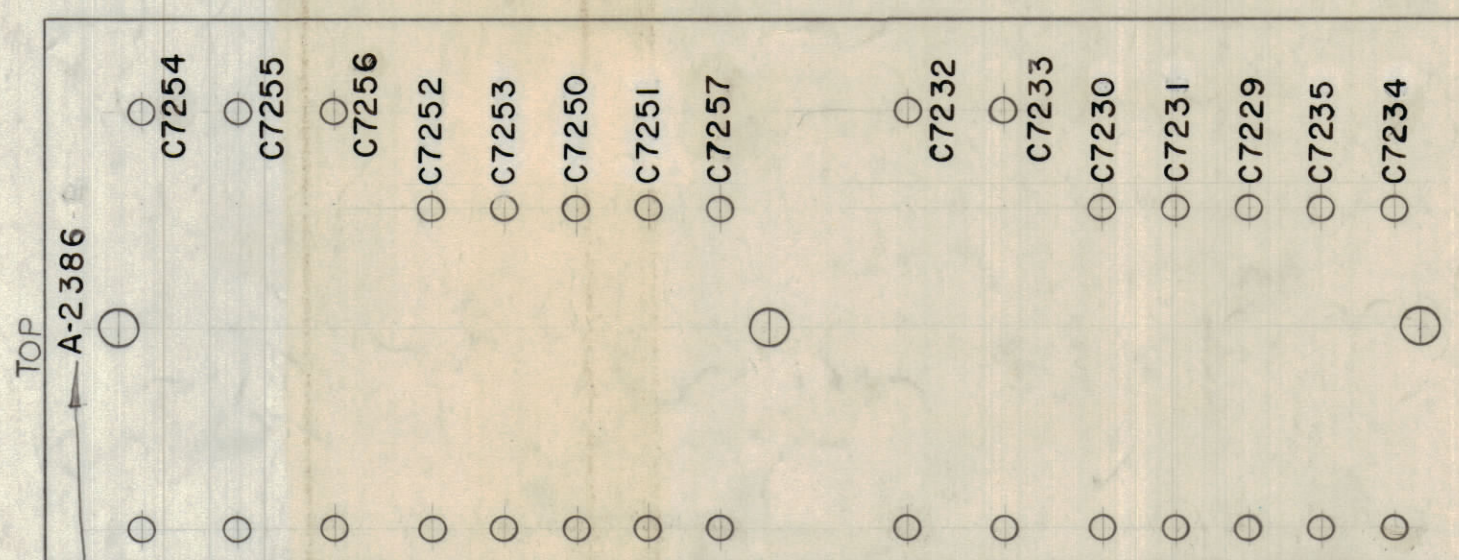


LEGEND		
HOLE	DESCRIPTION	REQ
A	.112 DIA.	30
B	.187 DIA.	3



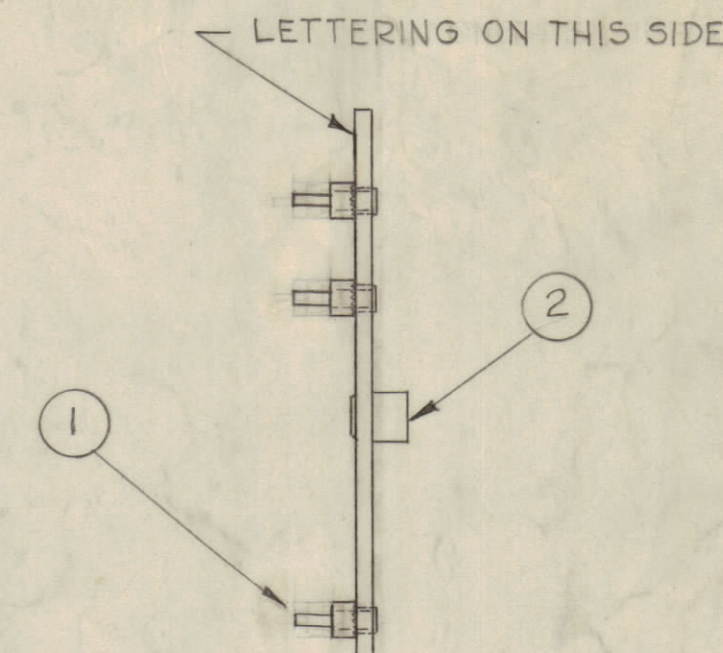
STAGE 1 - MACHINING (A-2386-1)  
MATERIAL - 1/8", XXXP, PHENOLIC, FINISH - NATURAL.

ALL LETTERING TO BE 1/8" HIGH BLACK LUSTERLESS GOTHIC,  
(EXCEPT WHERE SHOWN OTHERWISE)  
MARKING PROCESS: AS PER TMC SPECIFICATION S-727

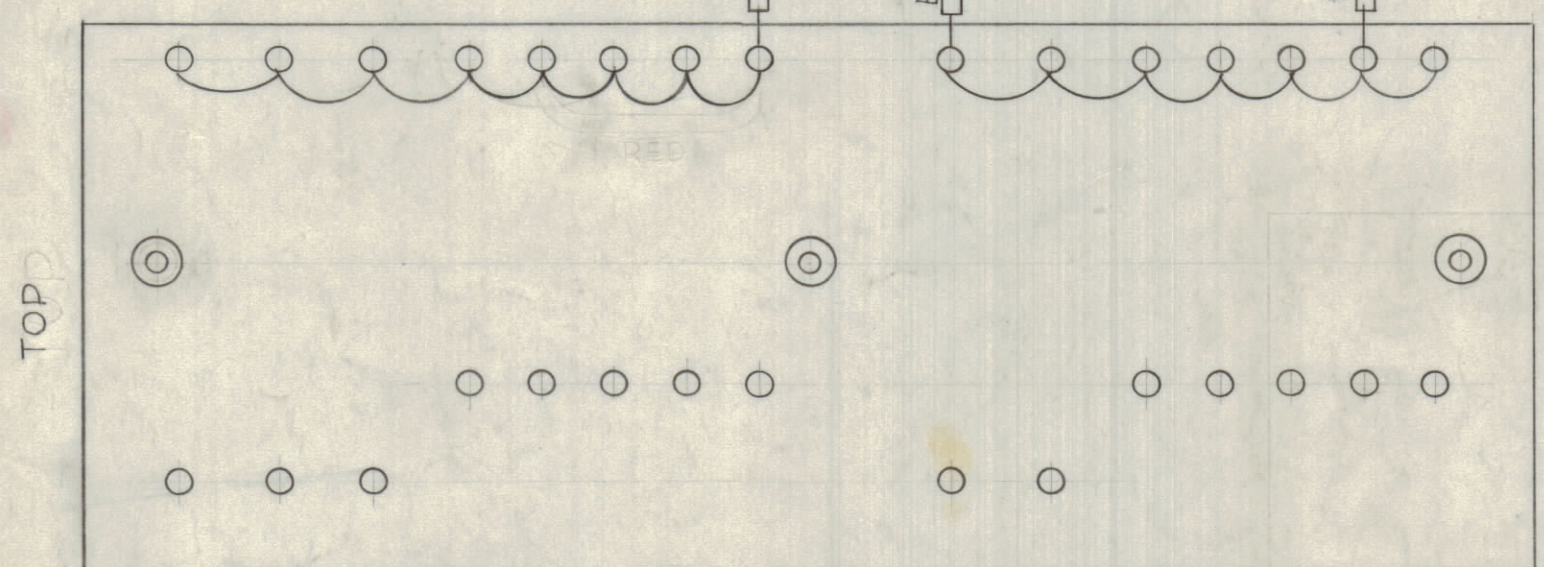
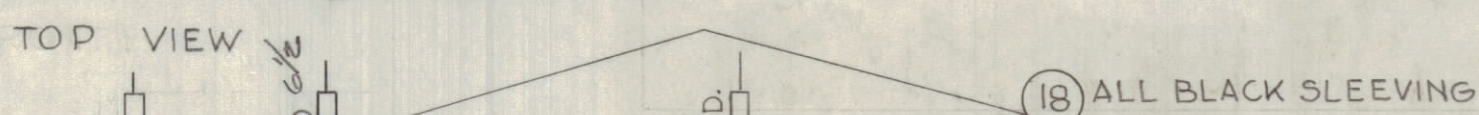
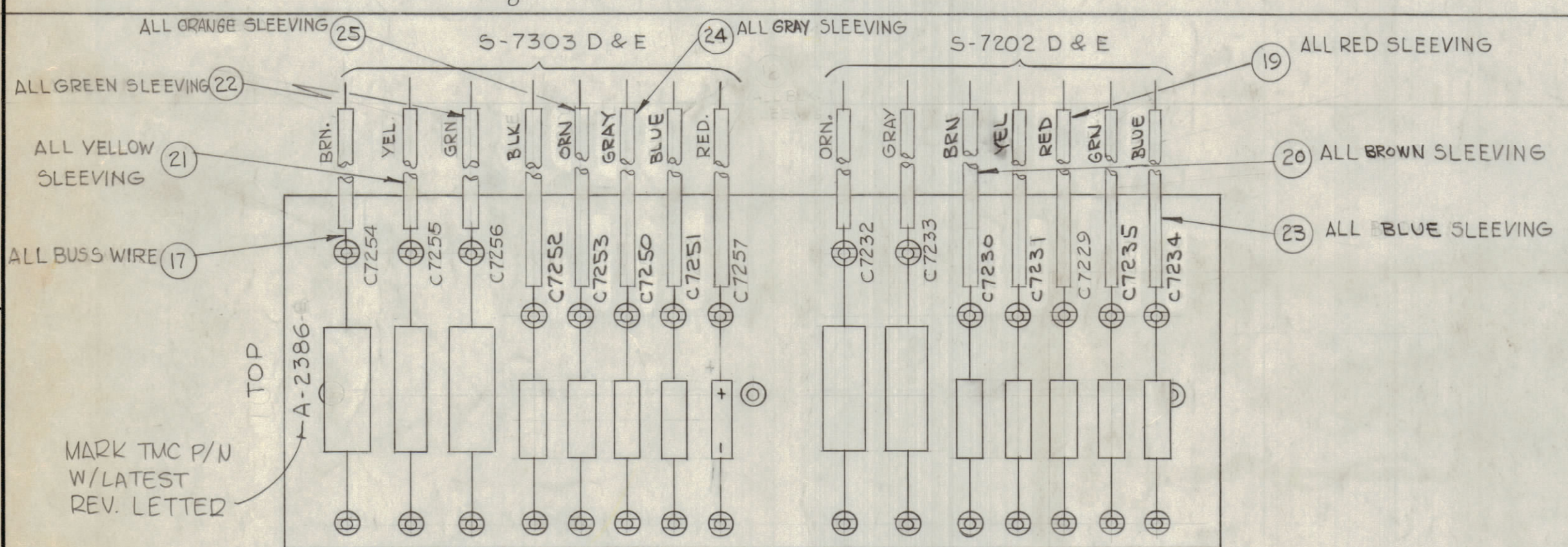


NOTE  
MARK TMC PART NO. WITH LATEST REVISION LETTER.

STAGE 2 - STAMPING (A-2386-2)



STAGE 3 - SUB-ASSY (A-2386-3)



STAGE 4 - ELECTRICAL ASSY. (A-2386-4)

NOTE -  
ALL BUSS WIRE TO BE 4" LONG.  
ALL SLEEVING TO BE 1/2" SHORTER.  
UNLESS OTHERWISE SPECIFIED

NOTICE TO PERSONS RECEIVING THIS DRAWING  
THE TECHNICAL MATERIEL CORPORATION claims  
proprietary right in the material disclosed herein.  
This drawing is issued in confidence for engineering  
information only and may not be reproduced or used  
to manufacture anything shown hereon without per-  
mission from THE TECHNICAL MATERIEL CORPORA-  
TION to the user. This drawing is loaned for mutual  
assistance and is subject to recall at any time.  
Property of:  
THE TECHNICAL MATERIEL CORPORATION  
MAMARONECK, NEW YORK

#	REV	DESCRIPTION	SYMBOL
7	26	DELETED	
7	25	PX-104-8-022 SLEEVING, INSULATION	ORN
7	24	PX-104-7-022	GRAY
7	23	PX-104-6-022	BLUE
10 1/2	22	PX-104-4-022	GRN
7	21	PX-104-2-022	YEL
7	20	PX-104-5-022	BRN
3 1/2	19	PX-104-3-022	RED
9 1/2	18	PX-104-1-022 SLEEVING, INSULATION	BLK
8 1/2	17	WL-100-8 WIRE BUSS BAR, TINNED	
X	16	BS-100 SOLDER, SOFT	
2	15	CX-107-7 CAPACITOR, FIXED MYLAR	C7235
1	14	CX-107-3	C7229
1	13	CX-107-5	C7235
1	12	CX-107-1	C7234
1	11	CX-107-9	C7233
1	10	CX-107-11	C7232
2	9	CX-107-2	C7252
1	8	CX-107-6	C7251
1	7	CX-107-4	C7250
1	6	CX-107-8	C7256
1	5	CX-107-10	C7255
1	4	CX-107-12 CAPACITOR, FIXED MYLAR	C7254
1	3	CE-107-1 CAPACITOR, ELECTROLYTIC TANTALUM	C7257
3	2	TE-108-3 RIVET TYPE, STANDOFF	
30	1	TE-160 TERMINAL LUG, SPLIT	

SYM	ZONE	DESCRIPTION	DATE	CH. NO.	DRAFTS	CHECKER	ENG. APP.
E		NO SYMBOLS COMPLETELY REVISED	7-29-64	1189			
F		NOTE ADD TO A-2386-2					
E		ITEMS 20, 23, 24 & 25 RELOCATED					
D		DWG UPDATED & CHECKED	1/16/64	10728			
C	F2	ON STAGE (3), ITEM (1) TURNED 90°	5-35-63	8139			
B	C2	LENGTHS ADDED TO ITEMS (17) TO (25)	2-19-63	8264			
A	G2	ITEM (26) CX-107-13, C7252 DELETED	12-27-				
A	B2	C7252 ADDED TO ITEM (9)	67	7866			

UNLESS OTHERWISE SPECIFIED:  
DIMENSIONS ARE IN INCHES  
TOLERANCES ON  
FRACTIONS ± 1/64 DECIMALS ± .005 ANGLES ± 1/2°  
SCALE DO NOT SCALE  
MAXIMUM ALLOWABLE TOLERANCES HAVE BEEN DETERMINED AND ANY DEVIATIONS WILL BE CAUSE FOR REJECTION. REMOVE ALL BURRS & SHARP EDGES

REQ. PER UNIT	MODEL	SECTION	ASSY. NO.	DATE	TYPE & TEMPER	HEAT TREAT. SPEC.	FINISH & SPEC. NO.
1	HAF-1			7-26-62			

REQ.	ITEM	PART NO.	DESCRIPTION	SYMBOL
			T. FAIOLA	
THE TECHNICAL MATERIEL CORP. MAMARONECK, NEW YORK				
STOCK SIZE				
TERMINAL BOARD & COMPONENT ASSY CHANNEL B REAR				
MATERIAL				
DRAWN GDL				
CHECKED				
FINAL APPROVAL				
A-2386				
ELEC. DES. APP. MECH. DES. APP. SHEET OF				

A-2386 E