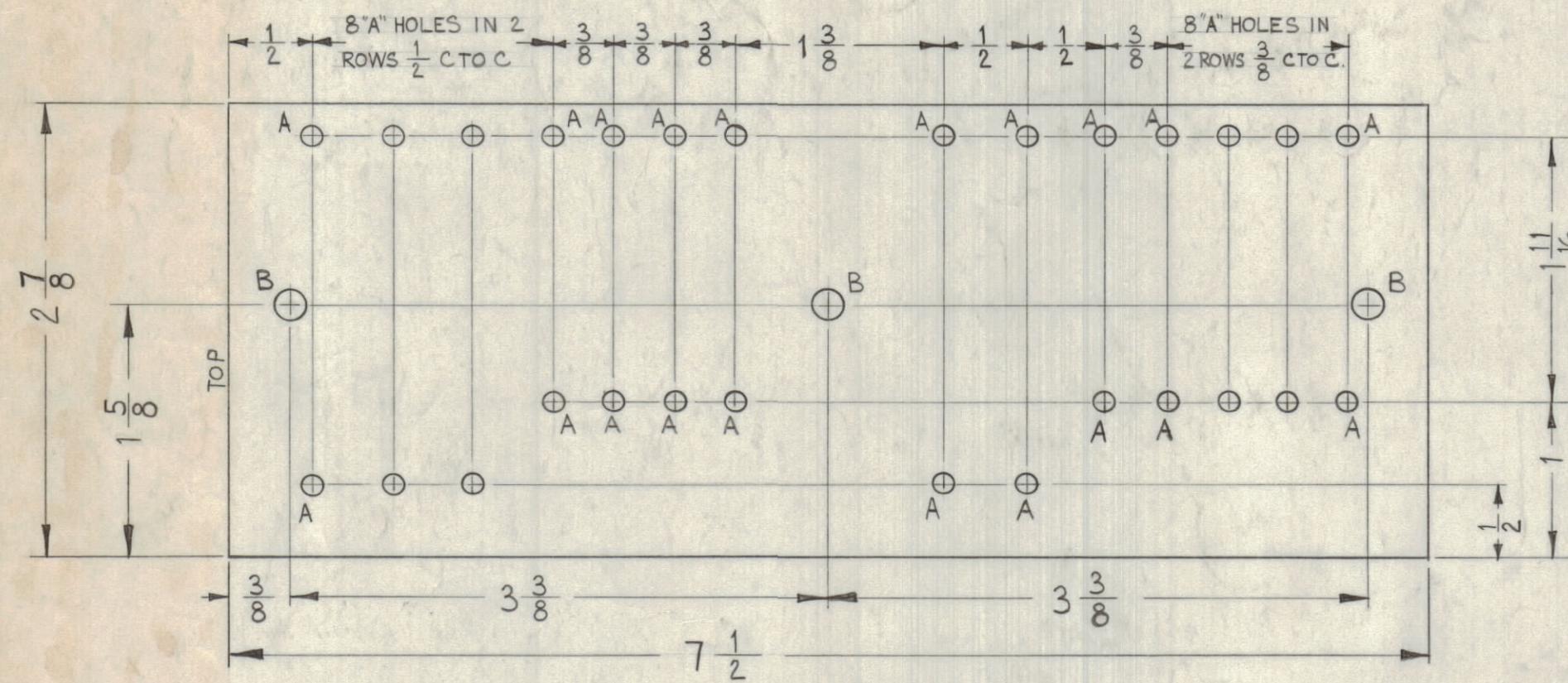
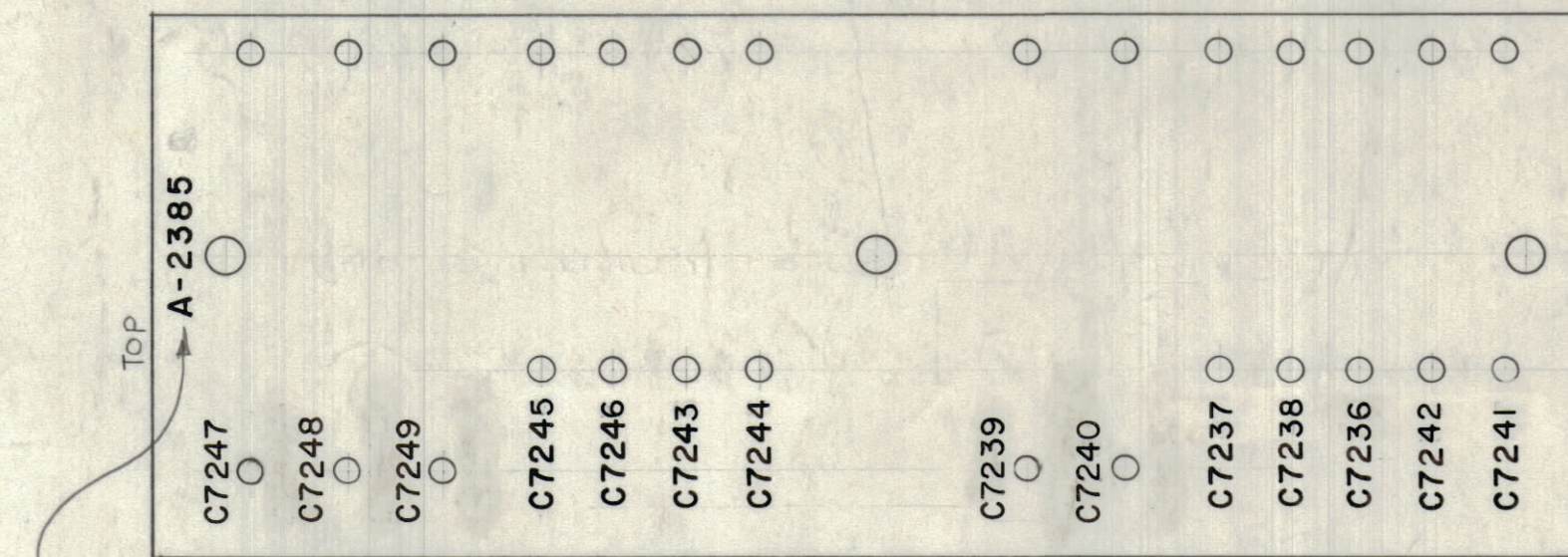


| LEGEND | | |
|--------|-------------|------|
| HOLES | DESCRIPTION | REQ. |
| A | .112 DIA. | 28 |
| B | .187 DIA. | 3 |

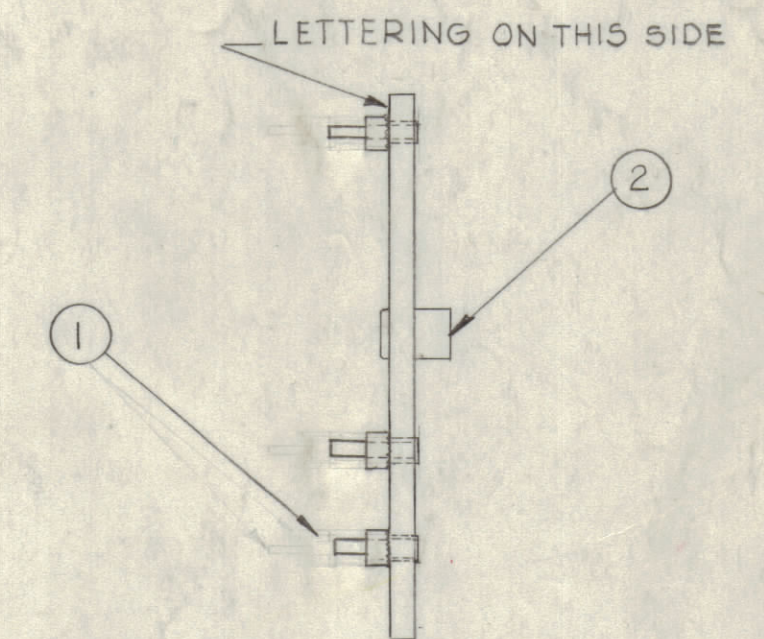
ALL LETTERING TO BE 1/8 HIGH BLACK LUSTERLESS GOTHIC
MARKING PROCESS: AS PER TMC SPECIFICATION S-727



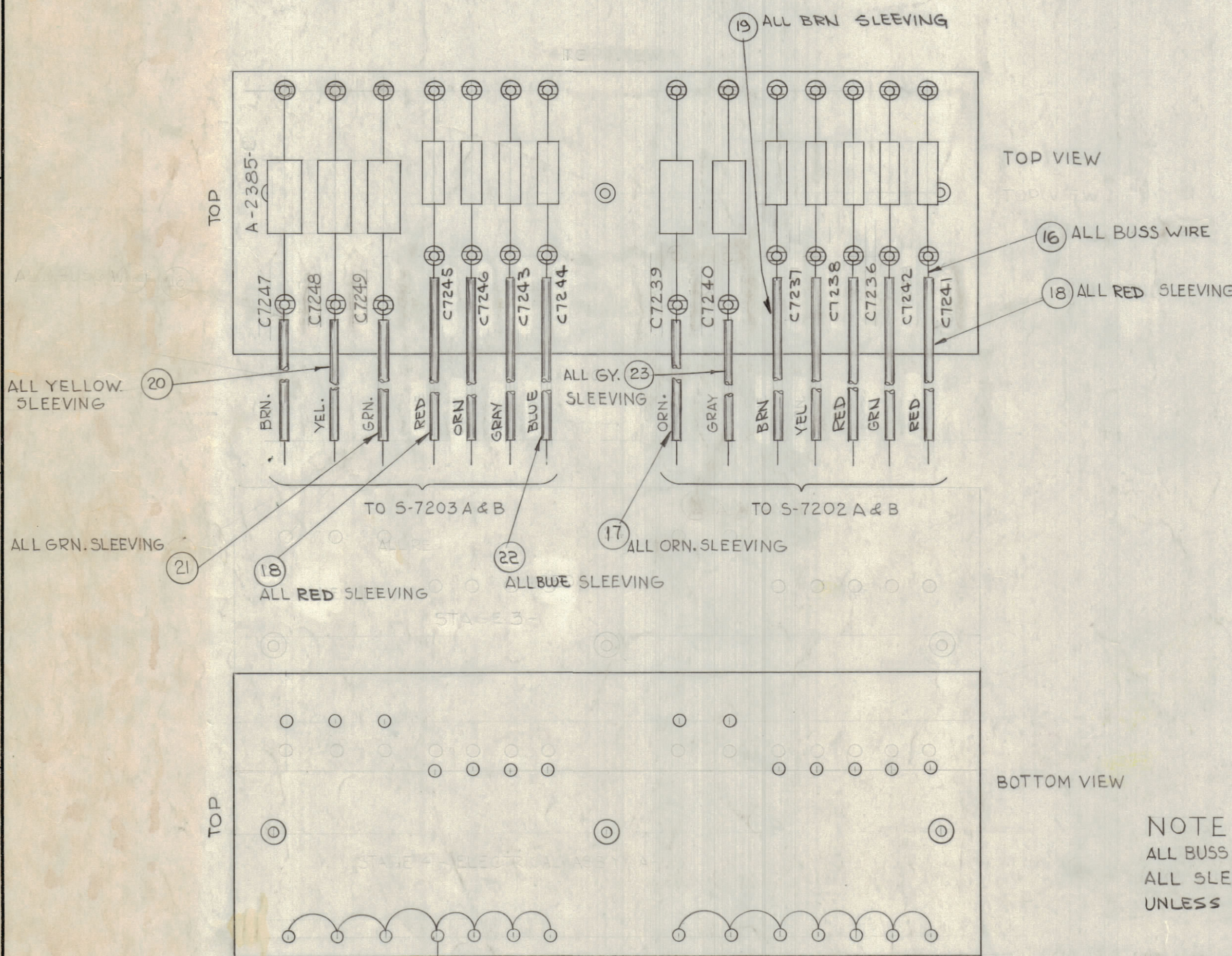
STAGE 1 - MACHINING (A-2385-1)
MATERIAL ~ 1/8", XXXP, PHENOLIC, FINISH - NATURAL



STAGE 2 - STAMPING (A-2385-2)



STAGE 3 - SUB-ASSY (A-2385-3)



NOTE -
ALL BUSS WIRE TO BE 4" LONG
ALL SLEEVING TO BE 1/2" SHORTER
UNLESS OTHERWISE SPECIFIED

STAGE 4 - ELECTRICAL ASS'Y (A-2385-4)

| SYM | ZONE | DESCRIPTION | DATE | CH. NO. | DRAFTS | CHECKER | ENG. APP. |
|-----|------|---|----------|---------|--------|---------|-----------|
| E | - | ON A2385-2 SYMBOLS (C*) REVISED ON A2385-4 ITEMS 15, 19, 22 RELOCATED. NOTE ADDED TO A2385-4. | 7-26-62 | 11890 | | | |
| D | + | DWG UPDATED & CLARIFIED | 11/16/60 | 10728 | | | |
| C | F2 | ON STAGE (3) ITEM (1) TURNED 90° | 3-25-63 | 8239 | | | |
| B | C7 | LENGTHS ADDED TO ITEMS (4) TO (23) | 2-19-63 | 8264 | | | |
| A | C2 | ITEM (2) EX-107-13, C7245 DELETED | 12-27-62 | 7866 | | | |
| A | B2 | C7245 ADDED TO ITEM (8) | | | | | |

UNLESS OTHERWISE SPECIFIED:
DIMENSIONS ARE IN INCHES
TOLERANCES ON
FRACTIONS ± 1/64
DECIMALS ± .005
ANGLES ± 1/2°

SCALE DO NOT SCALE
MAXIMUM ALLOWABLE TOLERANCES HAVE BEEN DETERMINED AND ANY DEVIATIONS WILL BE CAUSE FOR REJECTION.
REMOVE ALL BURRS & SHARP EDGES

NOTICE TO PERSONS RECEIVING THIS DRAWING

THE TECHNICAL MATERIEL CORPORATION claims proprietary right in the material disclosed herein. This drawing is issued in confidence for engineering information only and may not be reproduced or used to manufacture anything shown hereon without permission from THE TECHNICAL MATERIEL CORPORATION to the user. This drawing is loaned for mutual assistance and is subject to recall at any time.

Property of:
THE TECHNICAL MATERIEL CORPORATION
MAMARONECK, NEW YORK

NOTICE TO PERSONS RECEIVING THIS DRAWING

THE TECHNICAL MATERIEL CORPORATION claims proprietary right in the material disclosed herein. This drawing is issued in confidence for engineering information only and may not be reproduced or used to manufacture anything shown hereon without permission from THE TECHNICAL MATERIEL CORPORATION to the user. This drawing is loaned for mutual assistance and is subject to recall at any time.

Property of:
THE TECHNICAL MATERIEL CORPORATION
MAMARONECK, NEW YORK

| # | QTY | DESCRIPTION | DELETED | SYMBOL |
|--------|-----|---------------|------------------------|----------------|
| 7 | 23 | PX-104-7-.022 | SLEEVING, INSULATION | GRAY |
| 7 | 22 | PX-104-6-.022 | | BLUE |
| 7 | 21 | PX-104-4-.022 | | GRN |
| 7 | 20 | PX-104-2-.022 | | YEL |
| 7 | 19 | PX-104-5-.022 | | BRN |
| 7 | 18 | PX-104-3-.022 | | RED |
| 9 1/2 | 17 | PX-104-8-.022 | SLEEVING, INSULATION | ORN |
| 62 1/2 | 16 | WL-100-B | WIRE BUSS BAR, TINNED | |
| X | 15 | BS-100 | SOLDER, SOFT | |
| 2 | 14 | CX-107-7 | CAPACITOR, FIXED MYLAR | C7237 C7238 |
| 1 | 13 | CX-107-3 | | C7236 |
| 1 | 12 | CX-107-5 | | C7242 |
| 1 | 11 | CX-107-1 | | C7241 |
| 1 | 10 | CX-107-9 | | C7240 |
| 1 | 9 | CX-107-11 | | C7239 |
| 2 | 8 | CX-107-2 | | C7245 C7246 |
| 1 | 7 | CX-107-6 | | C7244 |
| 1 | 6 | CX-107-4 | | C7243 |
| 1 | 5 | CX-107-8 | | C7249 |
| 1 | 4 | CX-107-10 | | C7248 |
| 1 | 3 | CX-107-12 | CAPACITOR, FIXED MYLAR | C7247 |
| 3 | 2 | TE-108-3 | RIVET TYPE, STANDOFF | |
| 28 | 1 | TE-160 | TERMINAL LUG, SPLIT | |

| REQ. ITEM | PART NO. | DESCRIPTION | SYMBOL |
|---|----------|-------------|--------|
| T. FAIOLA | | | |
| THE TECHNICAL MATERIEL CORP. MAMARONECK, NEW YORK | | | |
| TERMINAL BOARD & COMPONENT ASSY. CHANNEL "B" FRONT | | | |
| MATERIAL | | | |
| G.D.L. [Signature] | | | |
| DRAWN CHECKED FINAL APPROVAL | | | |
| G.R.P. [Signature] A-2385 E | | | |
| FINISH & SPEC. NO. | | | |
| ELEC. DES. APP. MECH. DES. APP. SHEET OF | | | |

| REQ. PER UNIT | MODEL | SECTION | ASSY. NO. | DATE |
|---------------|-------|---------|-----------|---------|
| 1 | HAF-1 | | | 7-26-62 |

A-2385 E