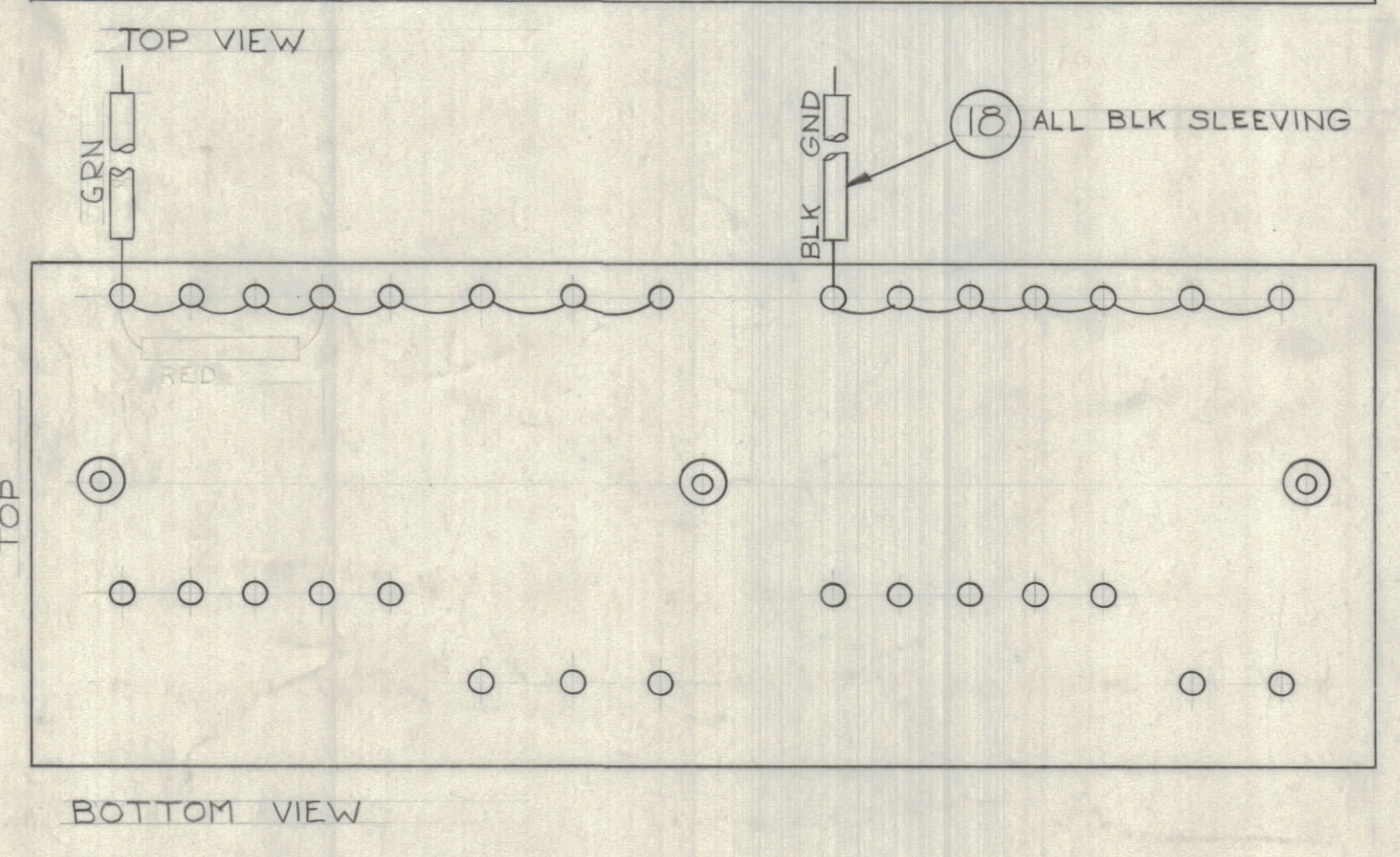
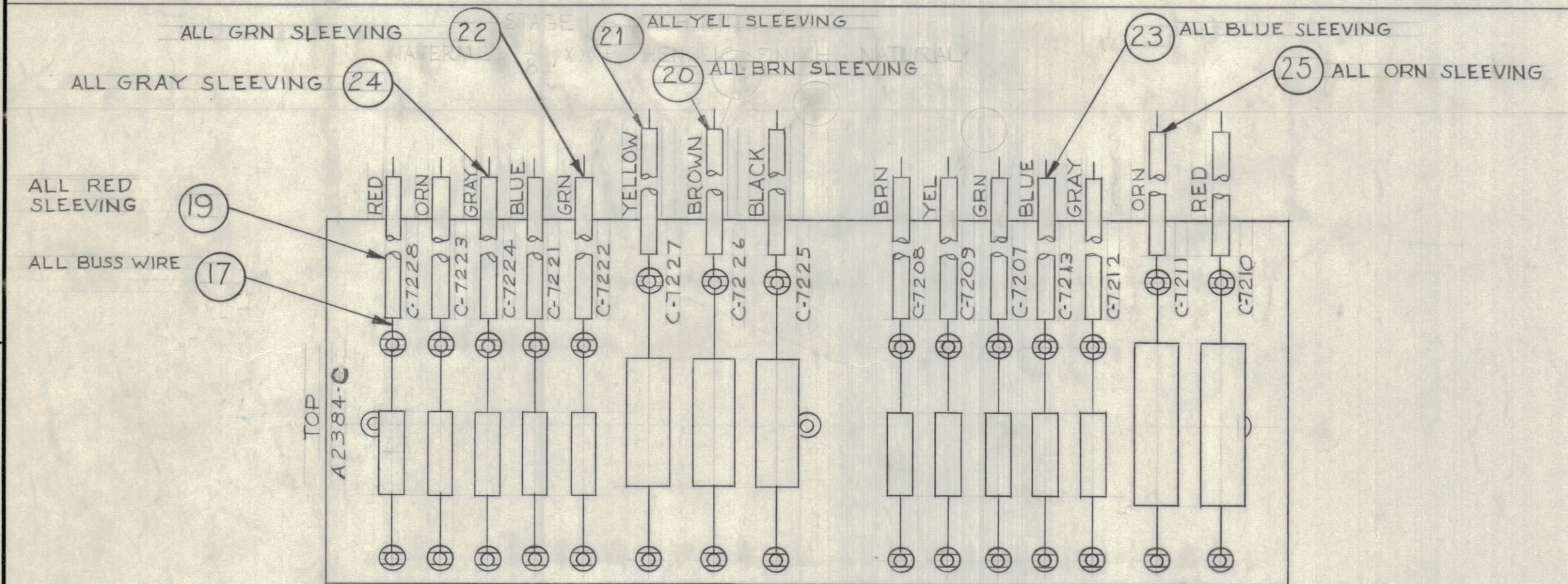
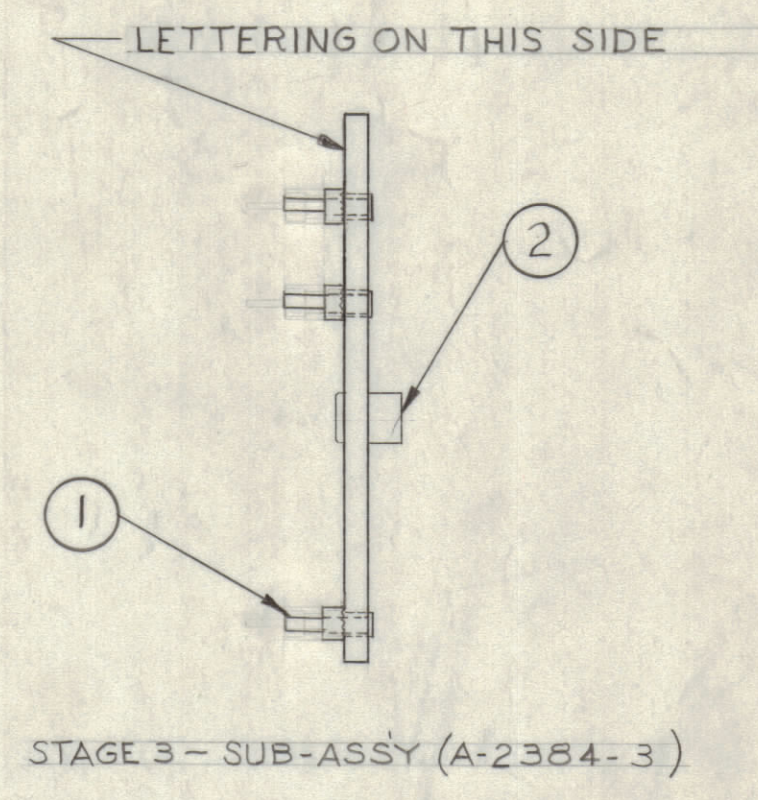
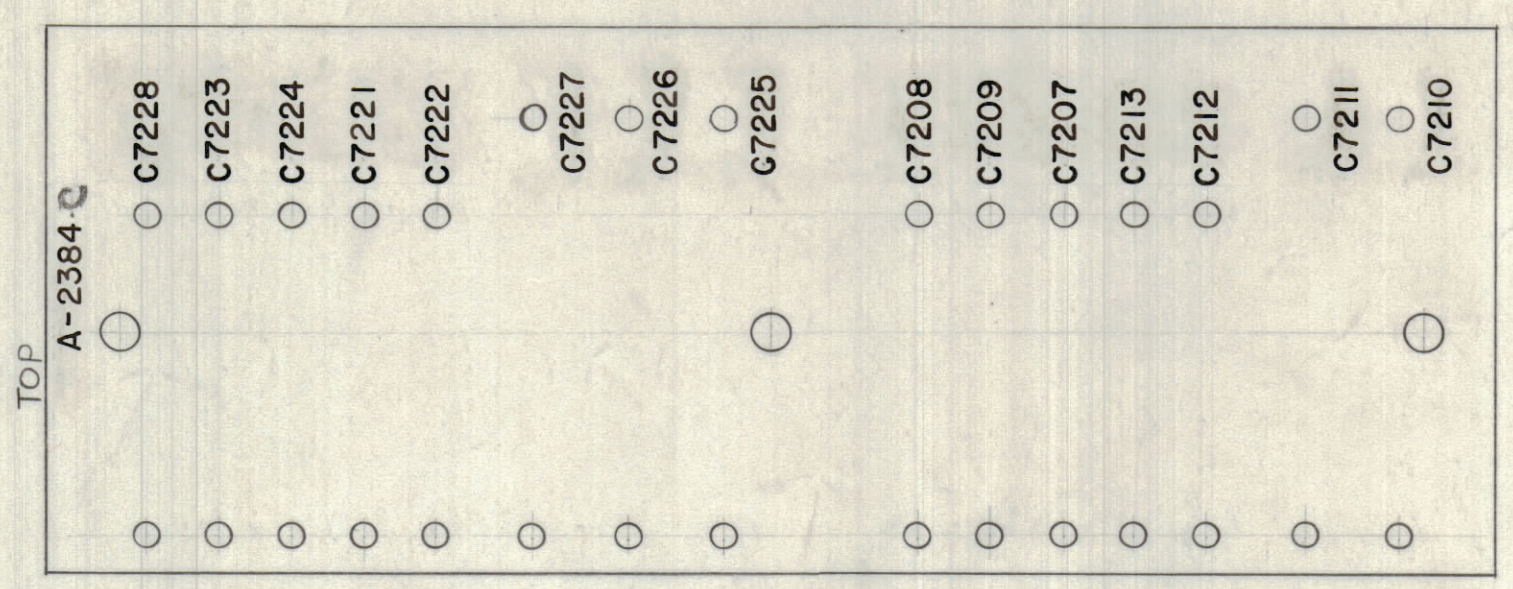
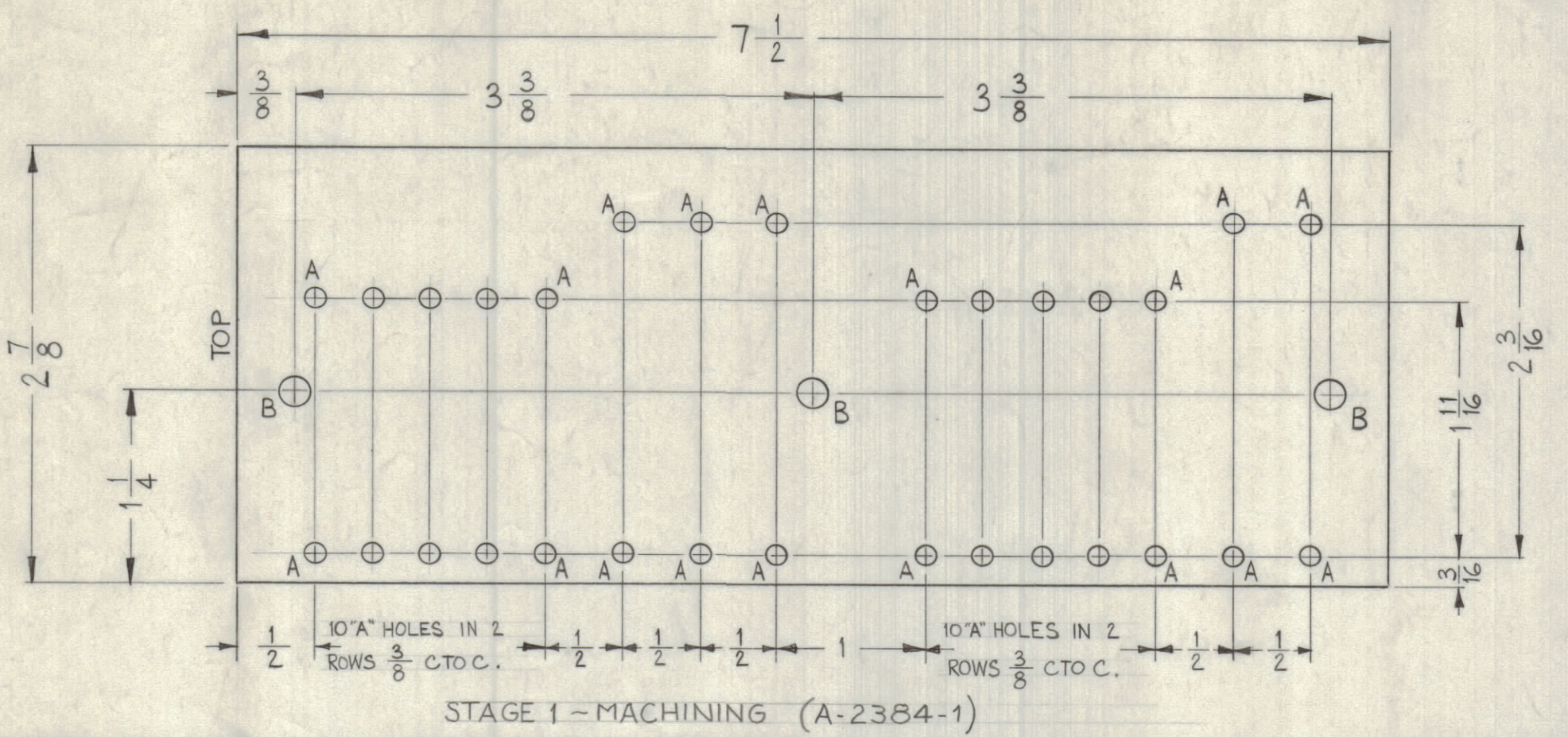


LEGEND		
HOLE	DESCRIPTION	REQ.
A	.112 DIA.	30
B	.187 DIA.	3

ALL LETTERING TO BE $\frac{1}{8}$ HIGH BLACK LUSTERLESS GOTHIC
 MARKING PROCESS: AS PER TMC SPECIFICATION S-727



NOTES:
 ALL BUSS WIRE TO BE 4" LONG
 ALL SLEEVING TO BE $\frac{1}{2}$ " SHORTER

NOTICE TO PERSONS RECEIVING THIS DRAWING
 THE TECHNICAL MATERIEL CORPORATION claims proprietary right in the material disclosed hereon. This drawing is issued in confidence for engineering information only and may not be reproduced or used to manufacture anything shown hereon without permission from THE TECHNICAL MATERIEL CORPORATION to the user. This drawing is loaned for mutual assistance and is subject to recall at any time.
 Property of:
 THE TECHNICAL MATERIEL CORPORATION
 MAMARONECK, NEW YORK

#	QTY	DESCRIPTION	SYMBOL
7	25	PX-104-8-022 SLEEVING, INSULATION	ORN
7	24	PX-104-7-022	GRAY
7	23	PX-104-6-022	BLUE
10 1/2	22	PX-104-4-022	GRN
7	21	PX-104-2-022	YEL
7	20	PX-104-5-022	BRN
7	19	PX-104-3-022	RED
7	18	PX-104-1-022 SLEEVING, INSULATION	BLK
81	17	WL-100-8 WIRE BUSS BAR, TINNED	
X	16	B5-100 SOLDER, SOFT	
2	15	CX-107-7 CAPACITOR, FIXED MYLAR	C7208 C7209
1	14	CX-107-3	C7207
1	13	CX-107-5	C7213
1	12	CX-107-1	C7212
1	11	CX-107-9	C7211
1	10	CX-107-11	C7210
2	9	CX-107-2	C7223 C7224
1	8	CX-107-6	C7222
1	7	CX-107-4	C7221
1	6	CX-107-8	C7227
1	5	CX-107-10	C7226
1	4	CX-107-12 CAPACITOR, FIXED MYLAR	C7225
1	3	CE-107-1 CAPACITOR, ELECTROLYTIC TANTALUM	C7228
3	2	TE-108-3 RIVET TYPE, STANDOFF	
30	1	TE-160 TERMINAL LUG, SPLIT	

SYM	ZONE	DESCRIPTION	DATE	CH. NO.	DRAFTS	CHECKER	ENG. APP.
C	F2	ON STAGE (3) ITEM (1) TURNED 90°	3-25-63	8639			
B	C2	LENGTHS ADDED TO ITEMS (17) TO (20)	2-19-63	8264			
A	C2	ITEM (24) CX-107-3, C7223 DELETED	12-27-62	7866			
A	B2	C7223 ADDED TO ITEM (9)					

NOTICE TO PERSONS RECEIVING THIS DRAWING
 THE TECHNICAL MATERIEL CORPORATION claims proprietary right in the material disclosed hereon. This drawing is issued in confidence for engineering information only and may not be reproduced or used to manufacture anything shown hereon without permission from THE TECHNICAL MATERIEL CORPORATION to the user. This drawing is loaned for mutual assistance and is subject to recall at any time.
 Property of:
 THE TECHNICAL MATERIEL CORPORATION
 MAMARONECK, NEW YORK

REQ. PER UNIT	MODEL	SECTION	ASSY. NO.	DATE	FINISH & SPEC. NO.	ELEC. DES. APP.	MECH. DES. APP.	SHEET	OF
1	HAF-1			7-26-62	NATURAL			A-2384	C

A-2384 C