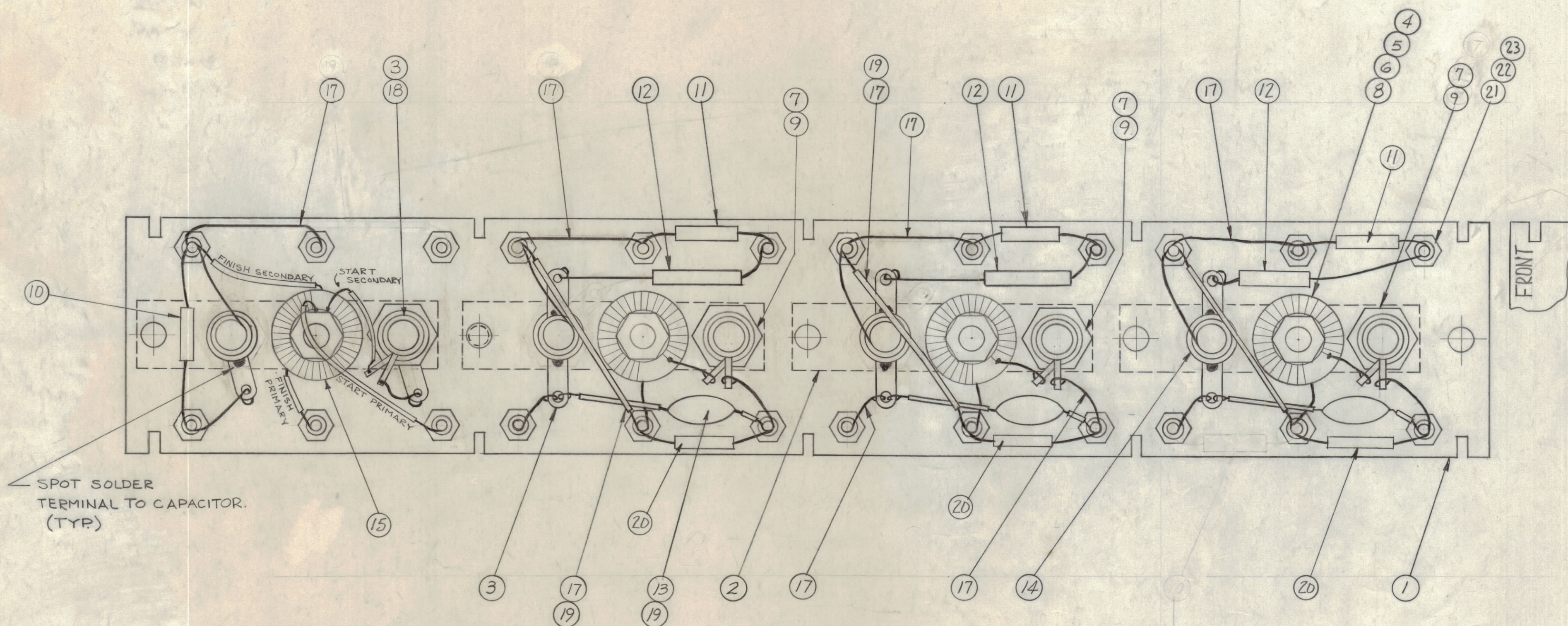


NOTICE TO PERSONS RECEIVING THIS DRAWING

THE TECHNICAL MATERIEL CORPORATION claims proprietary right in the material disclosed herein. This drawing is issued in confidence for engineering information only and may not be reproduced or used to manufacture anything shown hereon without permission from THE TECHNICAL MATERIEL CORPORATION to the user. This drawing is loaned for mutual assistance and is subject to recall at any time.

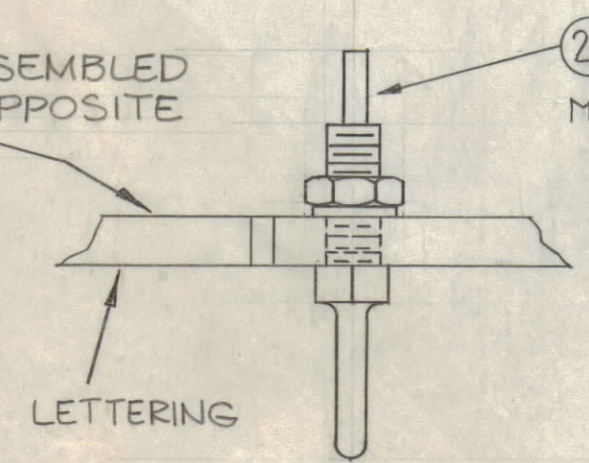
Property of:
THE TECHNICAL MATERIEL CORPORATION
MAMARONECK, NEW YORK



NOTE:
COMPONENTS TO BE ASSEMBLED ON REAR OF BOARD, OPPOSITE SIDE OF LETTERING.
(SEE LD-1122)

SPOT SOLDER
TERMINAL TO CAPACITOR.
(TYP)

NOTE
COMPONENTS TO BE ASSEMBLED
ON REAR OF BOARD, OPPOSITE
SIDE OF LETTERING
(SEE LD-1122)



24	23	NTH0440BNG	NUT, HEX	
24	22	LWS04MRN	LOCKWASHER, SPRING TYPE	
24	21	TE-191	TERMINAL	
3	20	RC20GF393K	RESISTOR, 39K	
X	19	PX-104-1-034	INSULATION, SLEEVING, #20	
1	18	AC-170	COIL, R.F., TUNED	L1014
X	17	WL-100-6	WIRE, BUSS, #20 AWG.	
X	16	BS-100	SOLDER, SOFT	
1	15	TZ-109	TRANSFORMER	T1003
4	14	CV-110-3	CAPACITOR, VARIABLE	
3	13	CC-100-15	CAPACITOR, 205 MF	
3	12	CM112F 202G55	CAPACITOR, 2000 MMF	
3	11	CM15F161G	CAPACITOR, 160 MMF	
1	10	CM15CF101G	CAPACITOR, 100 MMF	C1057
3	9	AC-165	COIL, R.F., TUNED	
3	8	CL-297	COIL, R.F. ASS'Y	
3	7	LWE 10 MRN	LOCKWASHER, EXT.	
4	6	FW-101-1	FLAT WASHER, NYLON	
4	5	NT-137-0632	NUT, NYLON	
4	4	SC-143-0632-B-10	SCREW, NYLON	
8	3	TE-104-4	LUG, GROUND	
4	2	MS-2897	STRAP, GROUND	
1	1	PX-649 (LD-1122)	TERMINAL BOARD, RF (LETTERED)	A1003

SYM	ZONE	DESCRIPTION	DATE	CH. NO.	DRAFTS	CHECKER	ENG. APP.
E	2	CHG. ITEM #12 FROM CM30F242G TO CM112F202G5	3-25-64	11088	AM	@	
D	BR	ITEM (10) WAS CM15F161G, 150 MMF	6-10-63	9216			
C	E-10	ITEM 10 REMOVED (LEFT TOP CORNER) WIRING CLARIFIED	8-21-62	7139	GDL		
B	BZ	ITEM 7 WAS LW10M50C (FORM # WAS A-2486, 8) WAS A-2493	7-25-62	6945	SS		
A	BZ	ITEM 15 WAS A-2525, ITEM 18 WAS A-2492	6-29-62	1			
		COMPLETELY REVISED					

UNLESS OTHERWISE SPECIFIED
DIMENSIONS ARE IN INCHES AND INCLUDE
CHEMICALLY APPLIED OR PLATED FINISHES

DECIMALS: ± .005
FRACTIONS: ± 1/64
ANGLES: ± 0° 30'

TOLERANCES

DECIMALS: ± .005
FRACTIONS: ± 1/64
ANGLES: ± 0° 30'

CUT HERE TO GUARANTEE VALUE

UNLESS OTHERWISE SPECIFIED:
DIMENSIONS ARE IN INCHES
TOLERANCES ON
FRACTIONS ± 1/64
DECIMALS ± .005
ANGLES ± 1/2°

SCALE
MAXIMUM ALLOWABLE TOLERANCES HAVE
BEEN DETERMINED AND ANY DEVIATIONS
WILL BE CAUSE FOR REJECTION.
REMOVE ALL BURRS & SHARP EDGES

REQ. PER UNIT	MODEL	SECTION	ASSY. NO.	DATE	TYPE & TEMPER	HEAT TREAT. SPEC.
1	HFR-11T		A-2532	1-30-62		

REQ. ITEM	PART NO.	DESCRIPTION	SYMBOL
THE TECHNICAL MATERIEL CORP. MAMARONECK, NEW YORK			
STOCK SIZE AX-362 ASS'Y			
MATERIAL RF. BOARD BAND #2			
DRAWN: J. J. J. CHECKED: [Signature] FINAL APPROVAL: [Signature]			
FINISH & SPEC. NO. ELEC. DES. APP. MECH. DES. APP. SHEET OF			

A-2372-1 E