

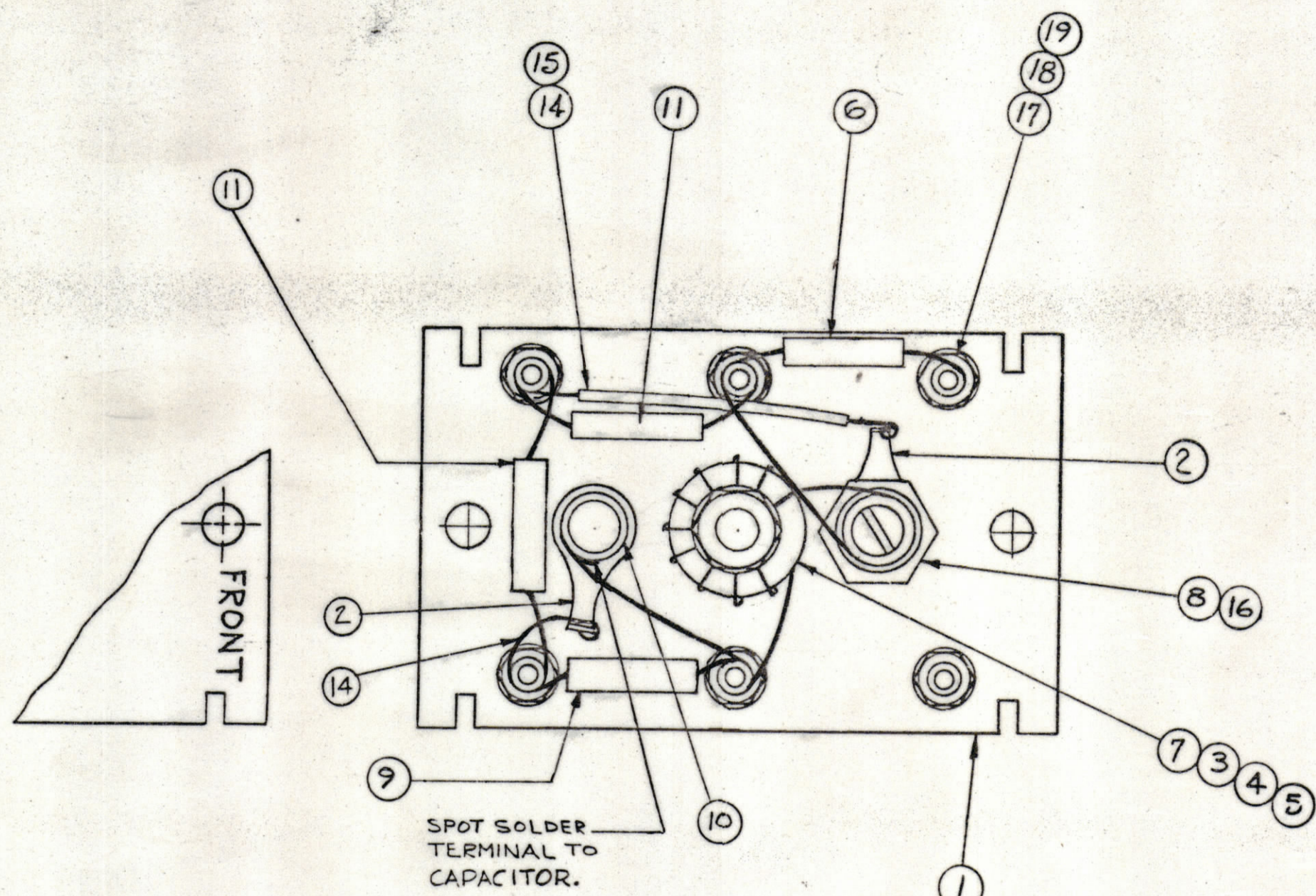
PROCEDURE FOR WINDING TRIM COIL

- 1 ~ PUSH ITEM 16 SLEEVING ON COIL FORM AS SHOWN.
- 2 ~ WIND LONG LEAD FROM TOROID CLOCKWISE 3 TURNS TIGHTLY AGAINST SLEEVING.
- 3 ~ STRIP ENAMEL FROM END NEAR TERMINAL WRAP & SOLDER SECURELY TO TERMINAL SHOWN.
- 4 ~ COAT WITH GLI02 Q-MAX. TO HOLD TURNS IN PLACE.

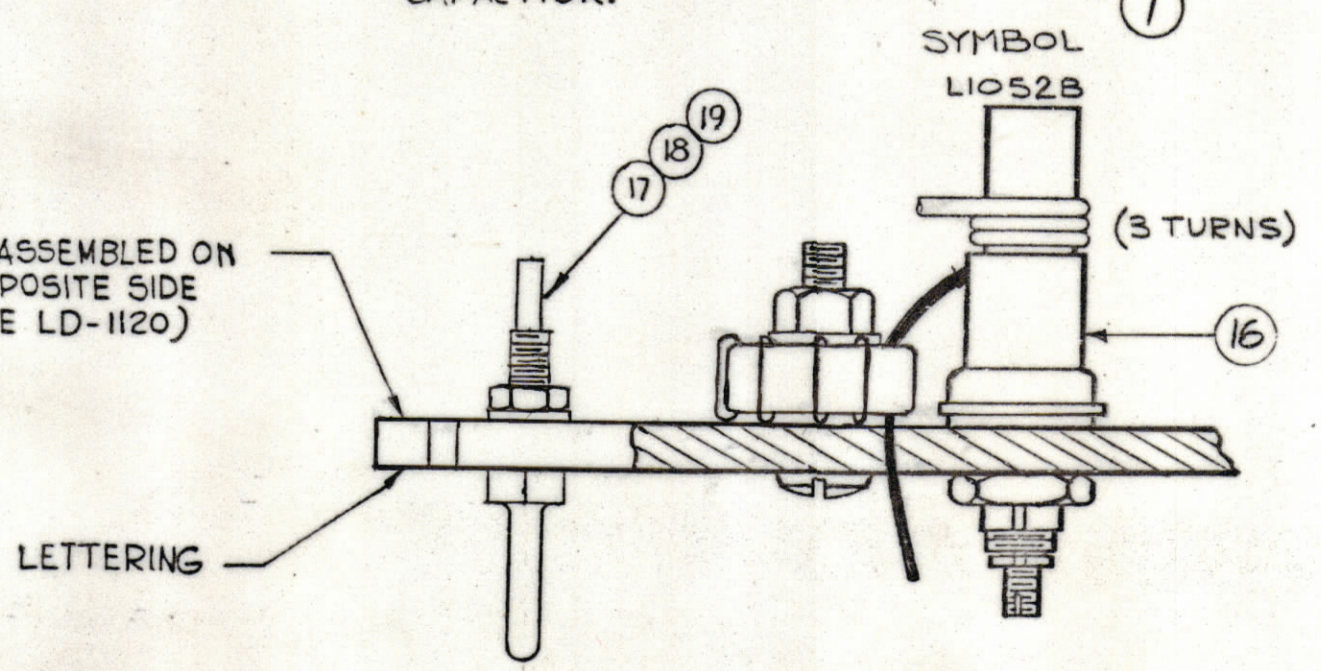
NOTICE TO PERSONS RECEIVING THIS DRAWING

THE TECHNICAL MATERIEL CORPORATION claims proprietary right in the material disclosed hereon. This drawing is issued in confidence for engineering information only and may not be reproduced or used to manufacture anything shown hereon without permission from THE TECHNICAL MATERIEL CORPORATION to the user. This drawing is loaned for mutual assistance and is subject to recall at any time.

Property of:  
THE TECHNICAL MATERIEL CORPORATION  
MAMARONECK, NEW YORK



NOTE:  
COMPONENTS TO BE ASSEMBLED ON REAR OF BOARD, OPPOSITE SIDE OF LETTERING. (SEE LD-1120)



| QTY | SYM | PART NO.         | DESCRIPTION                    | SYMBOL |
|-----|-----|------------------|--------------------------------|--------|
| 6   | 19  | NTH0440BNG       | NUT, HEX                       |        |
| 6   | 18  | LWS04MRN         | LOCKWASHER, SPRING TYPE        |        |
| 6   | 17  | TE-191           | TERMINAL                       |        |
| X   | 16  | PX-370-2-8       | INSULATION, SLEEVING, 5/16 LG. |        |
| X   | 15  | PX-104-1-.034    | INSULATION, SLEEVING #20       |        |
| X   | 14  | WL-100-6         | WIRE, BUSS #20 AWG             |        |
| X   | 13  | BS-100           | SOLDER, SOFT                   |        |
| X   | 12  | GL-102           | Q-MAX                          |        |
| 2   | 11  | CM15FISIG        | CAPACITOR, 150 MMF             | C1190  |
| 1   | 10  | CV-110-2         | CAPACITOR, VARIABLE .9-12      | C1193  |
| 1   | 9   | CM15C300J        | CAPACITOR, 30MMF               | C1192  |
| 1   | 8   | CF-134-5-0       | COIL FORM                      |        |
| 1   | 7   | A-2484           | COIL, RF, ASSEMBLY             | L1052A |
| 1   | 6   | CC21SLO3DC       | CAPACITOR, 3 MMF               | C1194  |
| 1   | 5   | FW-101-1         | FLATWASHER, NYLON              |        |
| 1   | 4   | NT-137-0632      | NUT, NYLON                     |        |
| 1   | 3   | SC-143-0632-B-10 | SCREW, NYLON                   |        |
| 2   | 2   | TE-104-4         | LUG, GROUND                    |        |
| 1   | 1   | PX-650 (LD-1120) | TERMINAL BOARD OSC. (LETTERED) | A-1016 |

| REV | DATE    | CH. NO. | DESK | CHECKER | ENG. APP. |
|-----|---------|---------|------|---------|-----------|
| A   | 6-29-62 | 1       | SM   |         |           |

COMPLETELY REVISED

UNLESS OTHERWISE SPECIFIED:  
DIMENSIONS ARE IN INCHES  
TOLERANCES ON  
FRACTIONS ± 1/64    DECIMALS ± .005    ANGLES ± 1/2°

MAXIMUM ALLOWABLE TOLERANCES HAVE BEEN DETERMINED AND ANY DEVIATIONS WILL BE CAUSE FOR REJECTION. REMOVE ALL BURRS & SHARP EDGES

| REQ. PER UNIT | MODEL   | SECTION | ASBY. NO. | DATE   |
|---------------|---------|---------|-----------|--------|
| 1             | HFR-11T |         | A-2532    | 2-5-62 |

| TYPE & TEMPER | HEAT TREAT. SPEC. | FINISH & SPEC. NO. | ELEC. DES. APP. | MECH. DES. APP. | SHEET OF |
|---------------|-------------------|--------------------|-----------------|-----------------|----------|
|               |                   |                    | J. ANGER        |                 | A-2370 A |