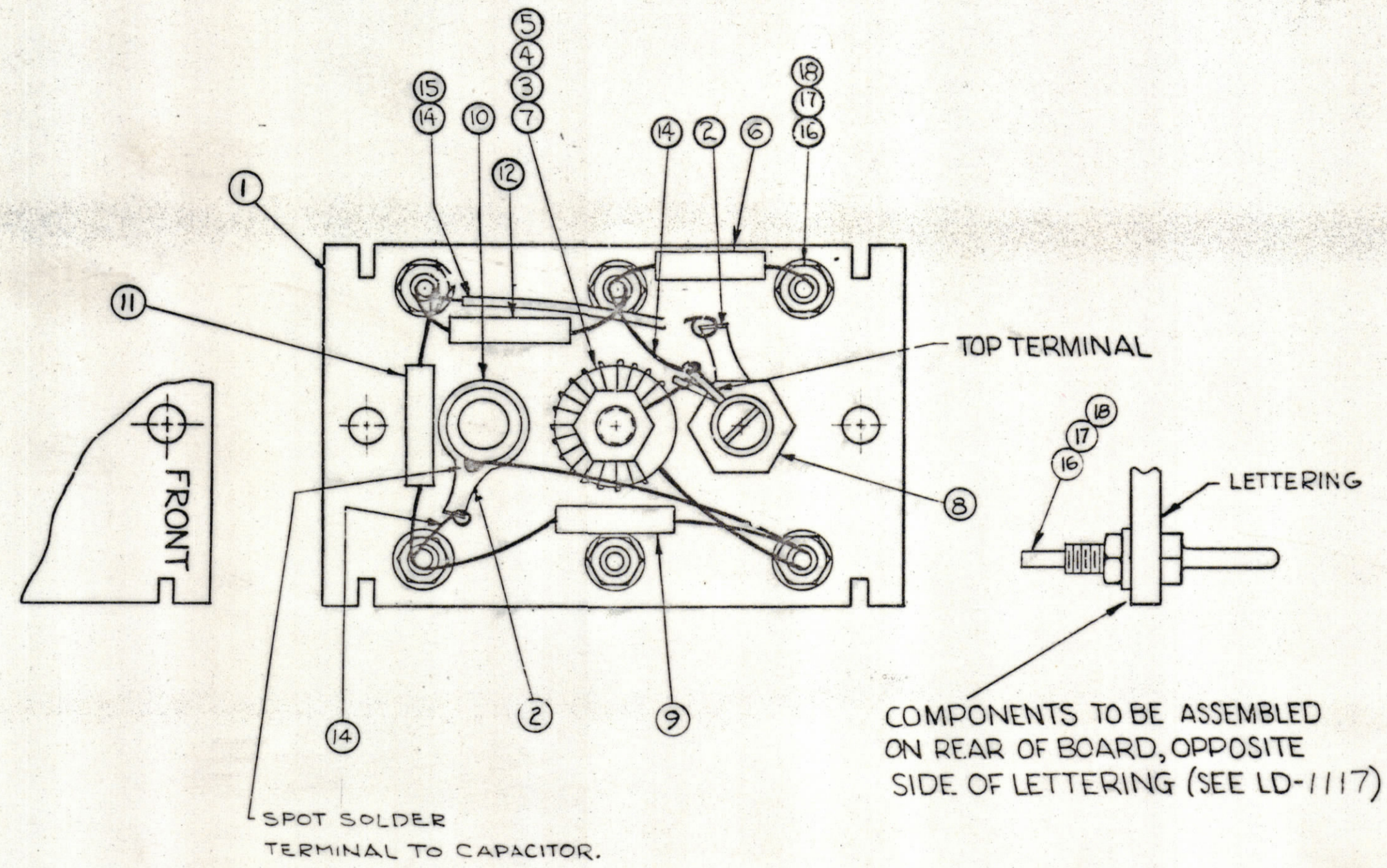


Property of:
 THE TECHNICAL MATERIEL CORPORATION
 MAMARONECK, NEW YORK



COMPONENTS TO BE ASSEMBLED ON REAR OF BOARD, OPPOSITE SIDE OF LETTERING (SEE LD-1117)

6	18	NTH0440BNG	NUT, HEXAGON	
6	17	LWS04MRN	LOCKWASHER, SPRING TYPE	
6	16	TE-191	TERMINAL	
X	15	PX-104-1-034	INSULATION, SLEEVING #20	
X	14	WL-100-6	WIRE, BUSS #20 AWG	
X	13	BS-100	SOLDER, SOFT	
1	12	CM15F511G	CAPACITOR, 510 MMF	C1129
1	11	CM15F331G	CAPACITOR, 330 MMF	C1130
1	10	CV-110-3	CAPACITOR, VARIABLE .9-18	C1132
1	9	CM15C560G	CAPACITOR, 56 MMF	C1131
1	8	AC-169	COIL, R.F. TUNED	L1055
1	7	CL-302	COIL, RF, ASSEMBLY	L1037
1	6	CM15B150K	CAPACITOR, 15 MMF	C1133
1	5	FW-101-1	FLATWASHER, NYLON	
1	4	NT-137-0632	NUT, NYLON	
1	3	SC-143-0632-B-10	SCREW, NYLON	
2	2	TE-104-4	LUG, GROUND	
1	1	PX-650 (LD-1117)	TERMINAL BOARD, OSC. (LETTERED)	A-1010

REQ.	ITEM	PART NO.	DESCRIPTION	SYMBOL
ANGER				
THE TECHNICAL MATERIEL CORP. MAMARONECK, NEW YORK				
STOCK SIZE				
AX-373 ASS'Y (OSC. BOARD BAND #5)				
MATERIAL				
DRAWN: J. ANGER, CHECKED: [Signature], FINAL APPROVAL: [Signature]				
TYPE & TEMPER HEAT TREAT. SPEC.				
FINISH & SPEC. NO.				
ELEC. DES. APP. MECH. DES. APP. SHEET OF				

B	B2	ITEM (7) WAS A-2491, (8) WAS A-2497	2-7-63	8094	[Signature]	[Signature]	[Signature]
A	A	COMPLETELY REVISED	6-29-62	1	[Signature]	[Signature]	[Signature]
SYM	ZONE	DESCRIPTION	DATE	CH. NO.	DRAFTS	CHECKER	ENG. APP.
UNLESS OTHERWISE SPECIFIED:			SCALE DO NOT SCALE				
DIMENSIONS ARE IN INCHES			MAXIMUM ALLOWABLE TOLERANCES HAVE BEEN DETERMINED AND ANY DEVIATIONS WILL BE CAUSE FOR REJECTION. REMOVE ALL BURRS & SHARP EDGES				
TOLERANCES ON FRACTIONS ± 1/64			DECIMALS ± .005				
ANGLES ± 1/2°							

1	HFR-11T		A-2532	2-4-62
REQ. PER UNIT	MODEL	SECTION	ASSY. NO.	DATE
USED ON				