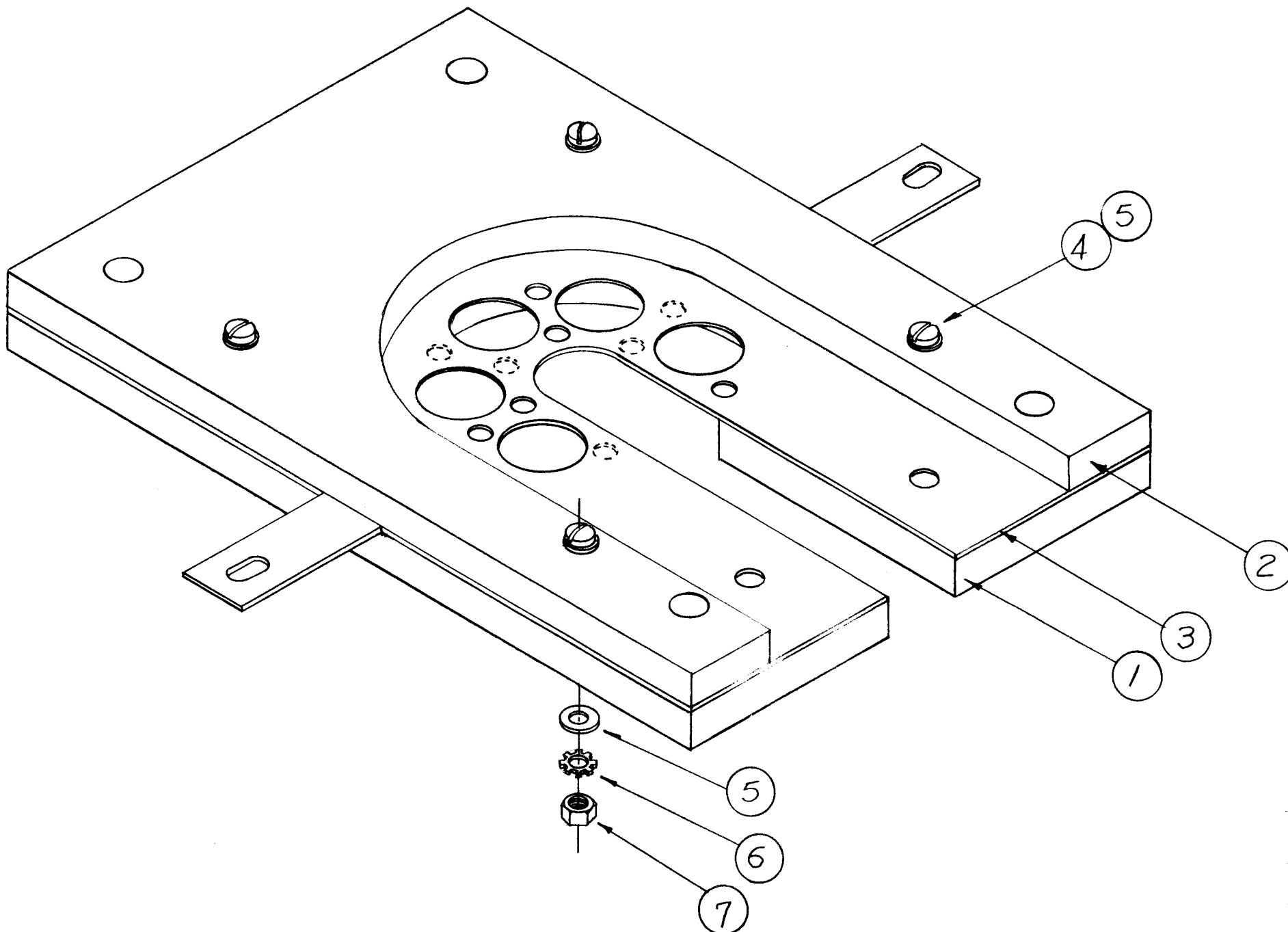


THE CONTENTS OF THIS DRAWING ARE THE EXCLUSIVE PROPERTY OF THE TECHNICAL MATERIEL CORP. ITS UNAUTHORIZED USE OR REPRODUCTION IN WHOLE OR IN PART IS STRICTLY FORBIDDEN.

A-2355



4	7	NTH1032BN12	NUT, HEX.
4	6	LWE10MRN	LOCKWASHER, EXT.
8	5	FW10HBN	WASHER, FLAT
4	4	SCBS1032BN24	SCREW, MACHINE
1	3	MS-2855	PLATE, CONTACT, BOTTOM
1	2	PX-419	PLATE, PRESSURE, INSIDE, BOTTOM
1	1	PX-418	PLATE, PRESSURE, OUTSIDE, BOTTOM

REQ.	ITEM	PART NO.	DESCRIPTION	SYMBOL
			THE TECHNICAL MATERIEL CORP. MAMARONECK, NEW YORK	
STOCK SIZE			PRESSURE PLATE ASS'Y, BOTTOM, CENTER	
MATERIAL				
TYPE & TEMPER		HEAT TREAT. SPEC.	DRAWN	CHECKED
			<i>D. J. Mamm</i>	<i>R. RUZZO</i>
			<i>DRB</i>	<i>MR</i>
FINISH & SPEC. NO.		ELEC. DES. APP.	MECH. DES. APP.	FINAL APPROVAL
				A-2355

SYM	DESCRIPTION	DATE	CH. NO.	DRAFTS	CHECKER	ENG. APP.
	UNLESS OTHERWISE SPECIFIED: DIMENSIONS ARE IN INCHES TOLERANCES ON FRACTIONS ± 1/64 DECIMALS ± .005 ANGLES ± 1/20					
	SCALE: <i>A</i>					
	MAXIMUM ALLOWABLE TOLERANCES HAVE BEEN DETERMINED AND ANY DEVIATIONS WILL BE CAUSE FOR REJECTION. REMOVE ALL BURRS AND SHARP EDGES					

REQ. PER UNIT	MODEL	SECTION	ASS'Y. NO.	DATE
1	TER-5K-50			1-29-62
USED ON				