

A-2353

THE CONTENTS OF THIS DRAWING ARE THE EXCLUSIVE PROPERTY OF THE TECHNICAL MATERIEL CORP. ITS UNAUTHORIZED USE OR REPRODUCTION IN WHOLE OR IN PART IS STRICTLY FORBIDDEN.

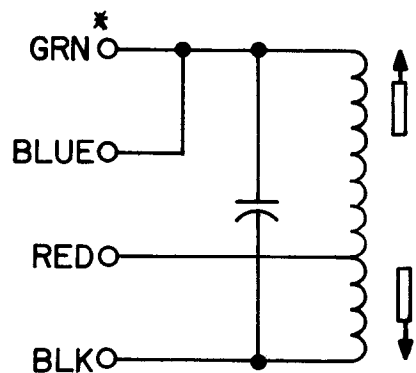
COIL DATA *	
Specifications	
Cam	.250
Cam Gear	105
Cam Driver	69
Ind (uh)	300-330
Q	75 or Greater
Coil Res. Ω	9
Freq (KC)	790
Ext. Cond (uf)	700

WINDING DATA		
Turns		
1st Pi	100T	
2nd Pi	100T	
3rd Pi	75T	
Wire	WI-104-541-SN-QS	

*All data taken between green and black terminals.

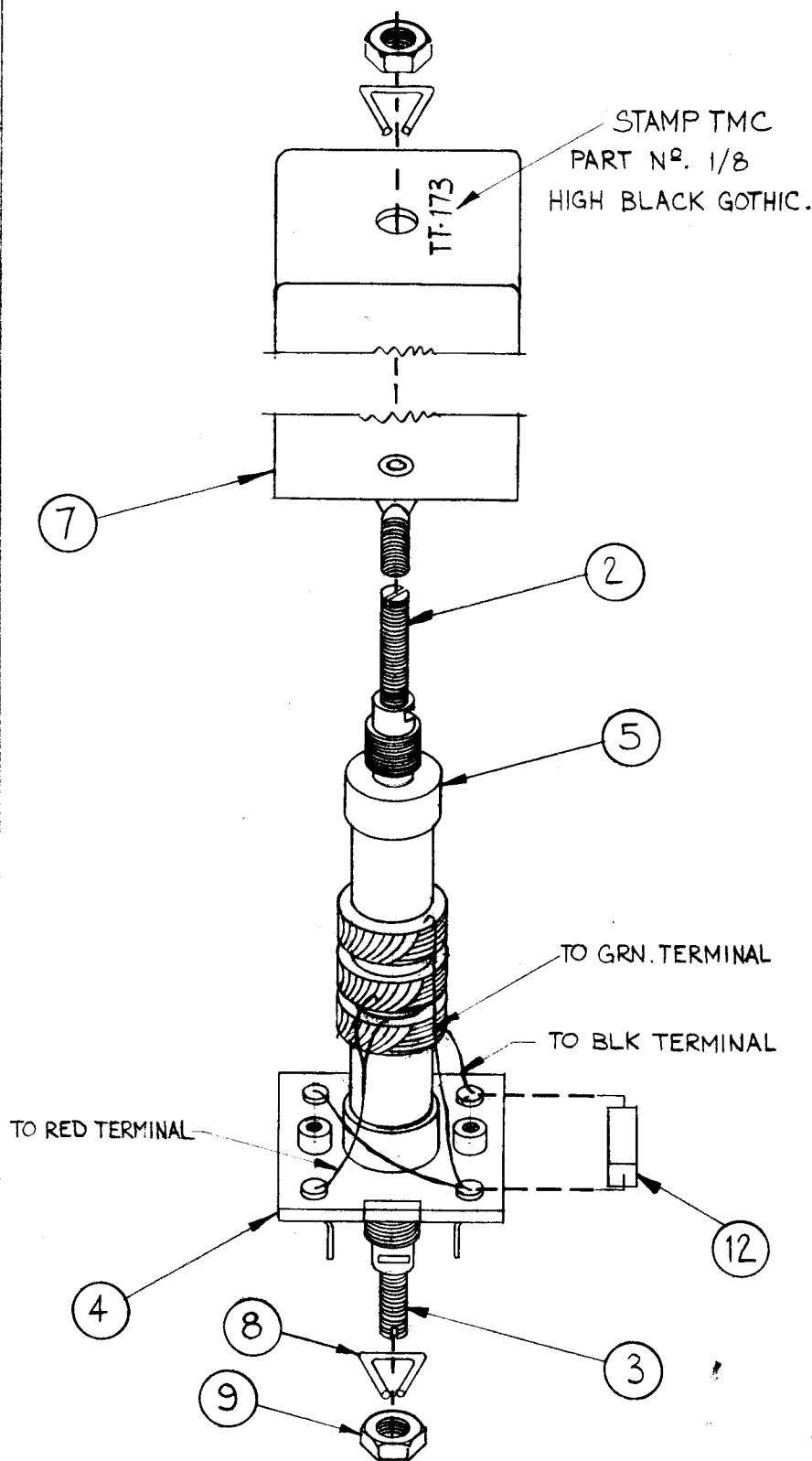
WINDING INSTRUCTIONS

1. Start winding 1st Pi 100 turns starting 7/16 from end. Stake ends with GL-103 (Item 10).
2. Wind 2nd Pi 100 turns starting 1/16 from end of 1st Pi. Stake ends with GL-103 (Item 10).
3. Wind 3rd Pi 75 turns starting 1/16 from end of 2nd Pi. Stake ends with GL-103 (Item 10).
4. Color code coil base as shown.
5. Strip and tin leads. Solder them to proper color-coded terminals on base.
6. Measure Q, Ind, & Res w/o core.
7. Bake for one hour at 215°F. Saturate coils with GL-102 (Item 11).
8. Solder component leads to terminals.
9. Apply all leads with GL-102 (Item 11).
10. Assemble as per assembly drawing; place in can.

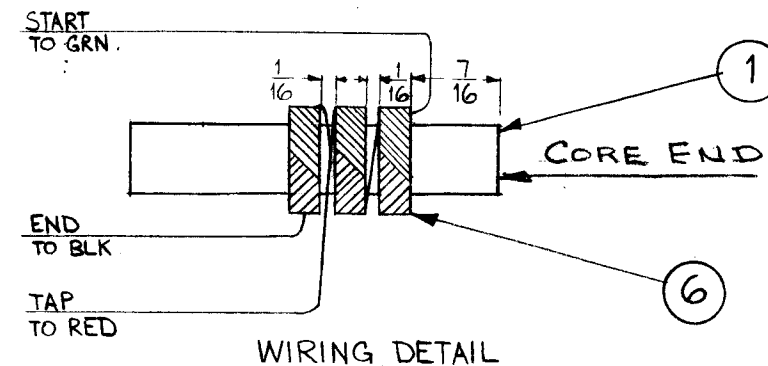
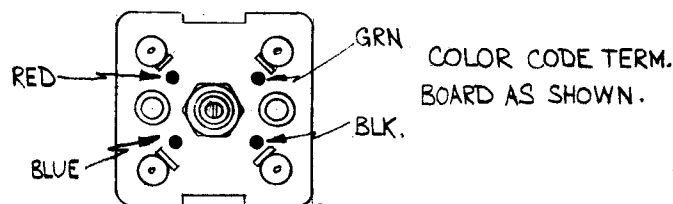


* INDICATES START OF WINDING.

~ SCHEMATIC DIAGRAM ~



BOTTOM VIEW



REQ.	ITEM	PART NO.	DESCRIPTION	SYMBOL
1	12	CM20D701G	Capacitor, Fixed Mica	
X	11	GL-102	Q-Dope	
X	10	GL-103	Duco Cement	
2	9	NT-102	Nut, Hex	
2	8	SP-102	Spring Lock	
1	7	A-1033-1	Can Assembly	
X	6	WI-104-541-SN-QS	Wire, Litz	
2	5	SM-110	Bushing, IF Coil Mounting	
1	4	A-1004	Terminal Board Assembly	
1	3	CI-109-11	Core, Tuning	
1	2	CI-109-4	Core, Tuning	
1	1	CF-100	Coil Form	

REQ.	ITEM	PART NO.	DESCRIPTION	SYMBOL
THE TECHNICAL MATERIEL CORP. MAMARONECK, NEW YORK TT-173 ASS'Y. (TRANSFORMER RF TUNED).				
STOCK SIZE				
MATERIAL				
TYPE & TEMPER. HEAT TREAT. SPEC.				
FINISH & SPEC. NO.				
			DRAWN: <i>W.A.F.</i> CHECKED: <i>me</i> FINAL APPROVAL: <i>BP</i>	
			A-2353	

SYM	DESCRIPTION	DATE	CH. NO.	DRAFTS	CHECKER	ENG. APP.
UNLESS OTHERWISE SPECIFIED:						
DIMENSIONS ARE IN INCHES						
TOLERANCES ON FRACTIONS $\pm 1/64$ DECIMALS $\pm .005$ ANGLES $\pm 1/2^\circ$						
SCALE: DO NOT SCALE						
MAXIMUM ALLOWABLE TOLERANCES HAVE BEEN DETERMINED AND ANY DEVIATIONS WILL BE CAUSE FOR REJECTION. REMOVE ALL BURRS AND SHARP EDGES						
1	DVM-4					1-30-62
REQ. PER UNIT	MODEL	SECTION	ASS'Y. NO.	DATE	USED ON	