

A-2325

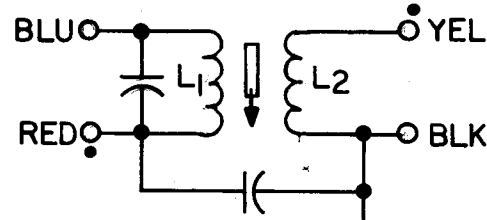
THE CONTENTS OF THIS DRAWING ARE THE EXCLUSIVE PROPERTY OF THE TECHNICAL MATERIEL CORP. ITS UNAUTHORIZED USE OR REPRODUCTION IN WHOLE OR IN PART IS STRICTLY FORBIDDEN.

COIL DATA		
SPECIFICATIONS	PRIMARY	SECONDARY
CAM	.250	
CAM GEAR	105	
CAM DRIVER	69	
IND $\pm 10\%$	610 μ h	.3 μ h
Q	55 or greater	60 or greater
COIL RES $\pm 10\%$	15	
TEST FREQ.	790 KC	25 MC
COND. (μ uf)	560	

WINDING DATA		
TURNS	297	5
WIRE	WI-104-341-DS-QS	WI-123-28

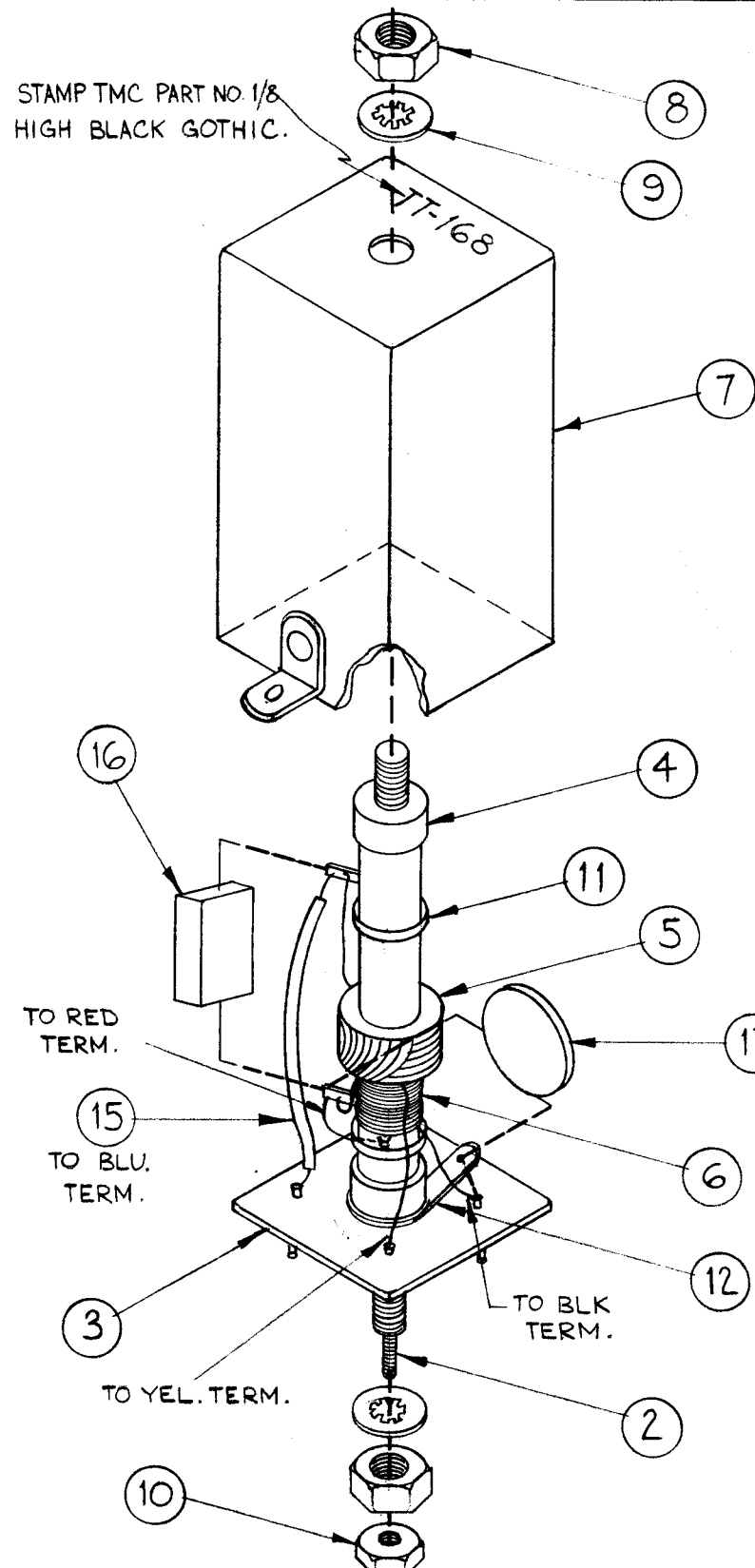
WINDING INSTRUCTIONS

1. Wind primary 297 turns (item 5) starting 5/8 from end of coil form. Stake ends with GL-103 (item 13).
2. Wind secondary 5 turns (item 6) starting 5/8 from end of coil form. Stake ends with GL-103 (item 13).
3. Color code coil base as shown.
4. Strip & tin leads. Solder them to proper color-coded terminals on base.
5. Measure Q, IND, & res w/o core.
6. Bake for 30 min. at 215° F. Saturate coils with GL-104-2 item (14).
7. Bake hard for 1 hour at 215° F.
8. Solder component leads to terminals.
9. Assemble as per assembly drawing. Place in can.

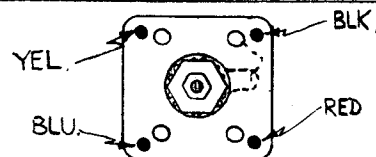


SCHEMATIC DIAGRAM

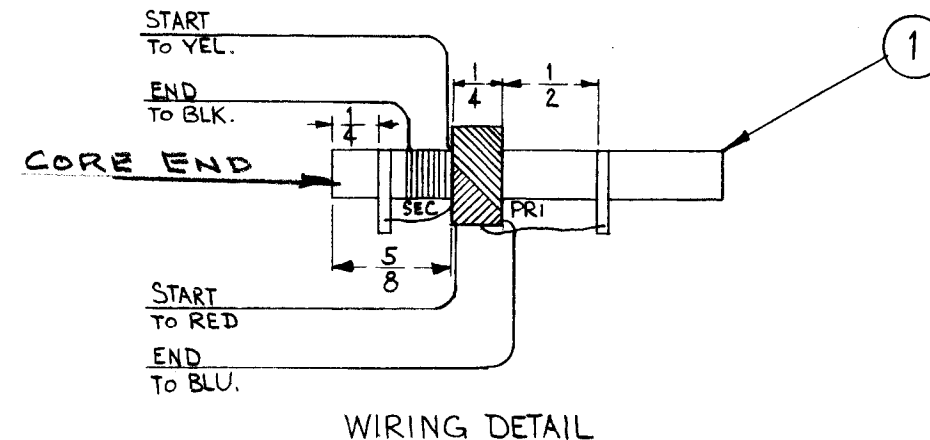
• INDICATES START OF WINDING.



BOTTOM VIEW



COLOR CODE TERM BOARD AS SHOWN.



WIRING DETAIL

NOTE: USE BOONTON CORP. Q METER MODEL 160A OR EQUIV.

1	17	CC-100-24	CAPACITOR, FIXED, CERAMIC DISC	
1	16	CM20F561G03	CAPACITOR, FIXED MICA	
X	15	PX-104-6-.034	SLEEVING, INSULATION	BLUE
X	14	GL-104-2	INSULEX, U85	
X	13	GL-103	DUCO	
1	12	TE-104-3	TERMINAL, LOCKING	
2	11	TE-153-1	TERMINAL, RING TYPE	
1	10	NTH0348BN6	NUT, HEX	
2	9	LWI08MRN	LOCKWASHER, INTERNAL	
2	8	NTH0832BN8	NUT, HEX	
1	7	A-1950-1	CAN ASS'Y.	
X	6	WI-123-28	MAGNET WIRE, HEAVY	
X	5	WI-104-341-DS-QS	WIRE, LITZ	
2	4	SM-140-2	BUSHING, COIL MTG.	
1	3	PX-585-1	TERMINAL BOARD, TRANSF., 4 LUGS	
1	2	CI-116-6	CORE, TUNING	
1	1	CF-122-1.93	COIL FORM, .250 O.D.	

REQ. ITEM	PART NO.	T.FAIOLA	DESCRIPTION	SYMBOL
STOCK SIZE				
MATERIAL				
TYPE & TEMPER				
HEAT TREAT. SPEC.				
FINISH & SPEC. NO.				

THE TECHNICAL MATERIEL CORP.
MAMARONECK, NEW YORK

TT-168 ASS'Y
(TRANSF. RF TUNED, T7000 & T7004, 250 KC.)

DRAWN <i>M.A.F.</i>	CHECKED <i>H.W.D.</i>	FINAL APPROVAL <i>BP</i>	
ELEC. DES. APP. <i>D.K. Fable</i>		MECH. DES. APP.	

A-2325

A	ITEM 16 WAS CM-20-C-561-J	2.27.67	17850	WJM	CPA	
SYM	DESCRIPTION	DATE	CH. NO.	DRAFTS	CHECKER	ENG. APP.
UNLESS OTHERWISE SPECIFIED:		SCALE: DO NOT SCALE				
DIMENSIONS ARE IN INCHES		MAXIMUM ALLOWABLE TOLERANCES HAVE BEEN DETERMINED AND ANY DEVIATIONS WILL BE CAUSE FOR REJECTION. REMOVE ALL BURRS AND SHARP EDGES				
TOLERANCES ON FRACTIONS $\pm 1/64$ DECIMALS $\pm .005$ ANGLES $\pm 1/2^\circ$						

2	HFA-1			1-15-62
REQ. PER UNIT	MODEL	SECTION	ASS'Y. NO.	DATE
USED ON				