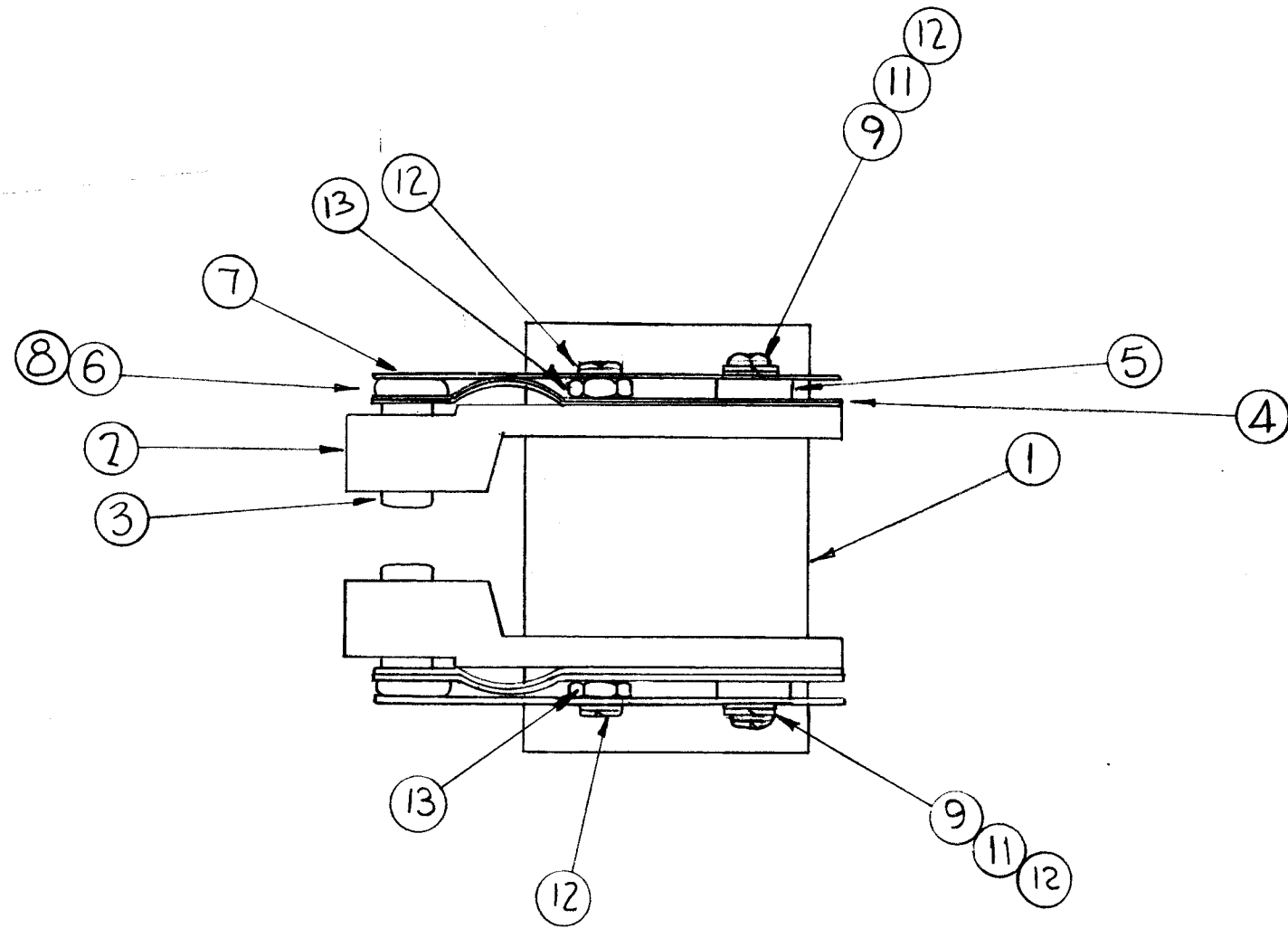


A-2251 E

THE CONTENTS OF THIS DRAWING ARE THE EXCLUSIVE PROPERTY OF THE TECHNICAL MATERIEL CORP. ITS UNAUTHORIZED USE OR REPRODUCTION IN WHOLE OR IN PART IS STRICTLY FORBIDDEN.



2	13	NTH1032BN10	Nut, Hex.
4	12	SCBP1032BN14	Screw, Machine
2	11	FW10HBP	Washer, Flat
-	10	DELETED	---
2	9	LWS10MRP	Washer, Lock, Split
2	8	SCFP1032BP8	Screw, Machine
2	7	MS-2630-2	Spring, Pressure
2	6	PM-704	Spacer, Contact
2	5	TE-117-39	Spacer
4	4	MS-2629-2	Contact
2	3	PM-702	Slug, Contact
2	2	PM-735	Bar, Support, Contact
1	1	PM-733	Post, Support Retainer

E	USED ON CHART UPDATED	12/23/63	10642			
	ITEM (9) WAS LWE10MRN					
	ITEM (11) WAS FW10HBN					
	ITEM (12) WAS SCBP1032BN14					
D	ITEM (13) WAS NTH1032BN10					
	ITEM (13) WAS NTH1032BN12	3-4-63	8342			
C	ITEM (11), (9), (4) WERE 4 REQ.	2-9-63	8135			
	ITEM (13) ADDED; PICTORIAL CLARIFIED					
B	CLARIFIED PICTORIAL, SCREWHEADS AT BOTTM. WERE NUTS					
	ITEM (6) WAS 4 REQ.	9/5/62	6749	V.R.R.		
	ITEM (9) WAS 2 REQ.					
A	ITEM (11) WAS FW10LBN					
	ITEM (1) WAS FW10LRN					
	ITEM (2) WAS SCBP1032BN32, 2 REQ.	2-2-62	6314			
	ITEM (10) NTH1032BN10, DELETED					

REQ.	ITEM	PART NO.	DESCRIPTION	SYMBOL
THE TECHNICAL MATERIEL CORP. MAMARONECK, NEW YORK				
STOCK SIZE				
AX-339 ASS'Y.				
MATERIAL				
TYPE & TEMPER		HEAT TREAT. SPEC.	DRAWN	CHECKED
FINISH & SPEC. NO.		ELEC. DES. APP.	MECH. DES. APP.	

UNLESS OTHERWISE SPECIFIED:	SCALE:	7	GPT-40K() 4	AS-125	AX-339	12-23-63
DIMENSIONS ARE IN INCHES	MAXIMUM ALLOWABLE TOLERANCES HAVE BEEN DETERMINED AND ANY DEVIATIONS WILL BE CAUSE FOR REJECTION.	6	GPT-40K() 3	AS-120	AX-339	12-5-61
TOLERANCES ON FRACTIONS ± 1/64 DECIMALS ± .005 ANGLES ± 1/2°	REMOVE ALL BURRS AND SHARP EDGES	REQ. PER UNIT	MODEL	SECTION	ASS'Y. NO.	DATE
USED ON						