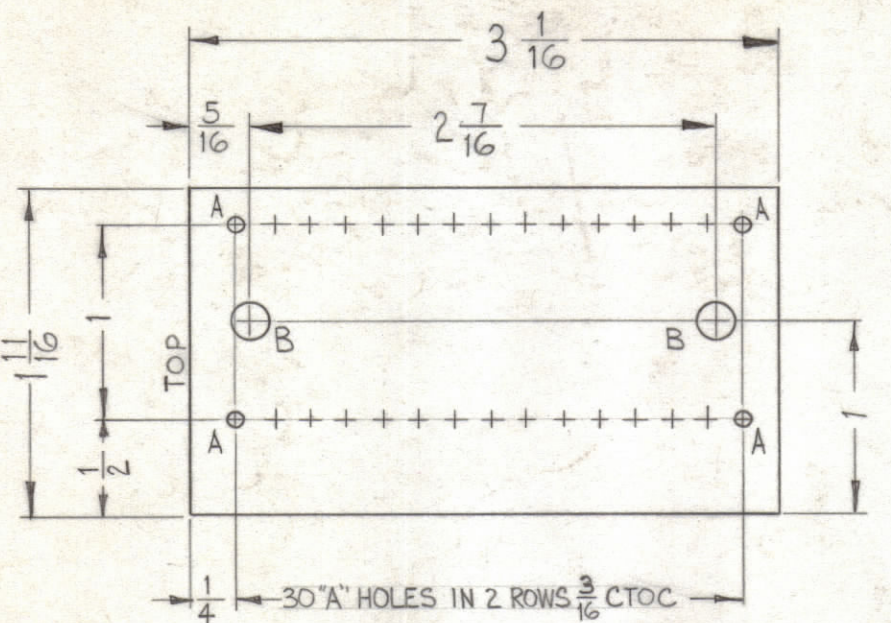
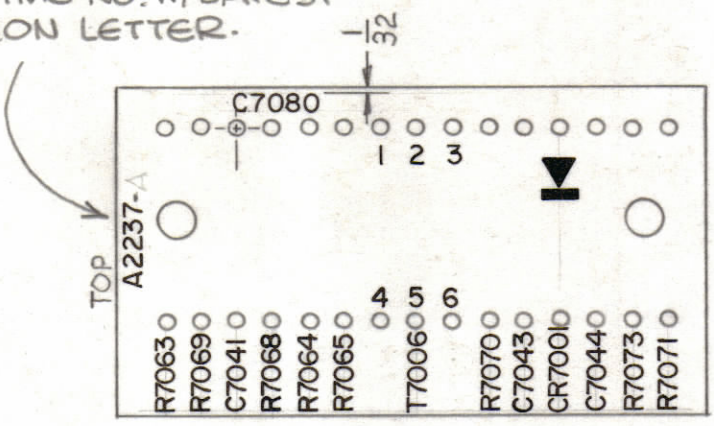


| LEGEND | | |
|--------|-------------|------|
| HOLE | DESCRIPTION | REQ. |
| A | .078 DIA. | 30 |
| B | .189 DIA. | 2 |

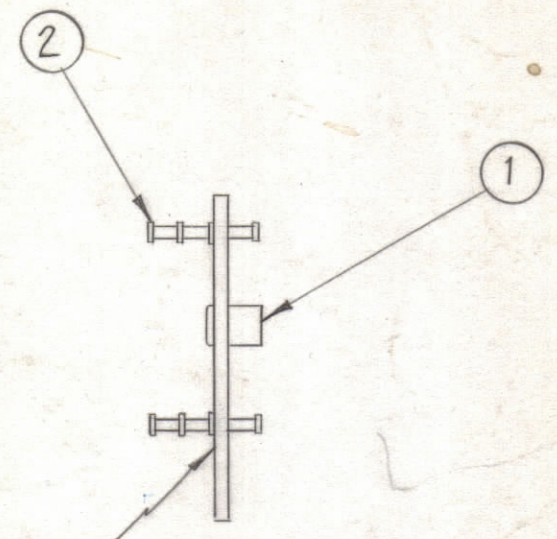


STAGE 1 - MACHINING (A-2237-1).
MATERIAL - 1/16 THICK, XXXP, PHENOLIC, FINISH - NATURAL.

ALL LETTERING TO BE 3/32 HIGH BLACK LUSTERLESS GOTHIC
(PHOTO WEINLAY PROCESS OR EQUIVALENT)
MARKING PROCESS: AS PER TMC SPECIFICATION S-727
MARK TMC NO. W/LATEST REVISION LETTER.

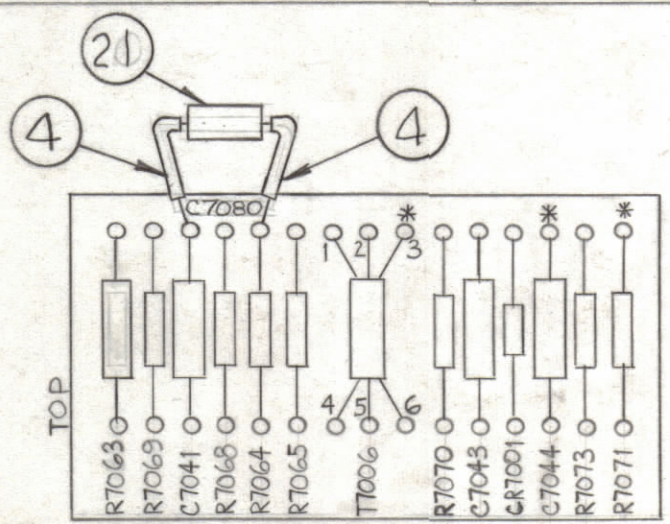


STAGE 2 - STAMPING (A-2237-2).



LETTERING ON THIS SIDE

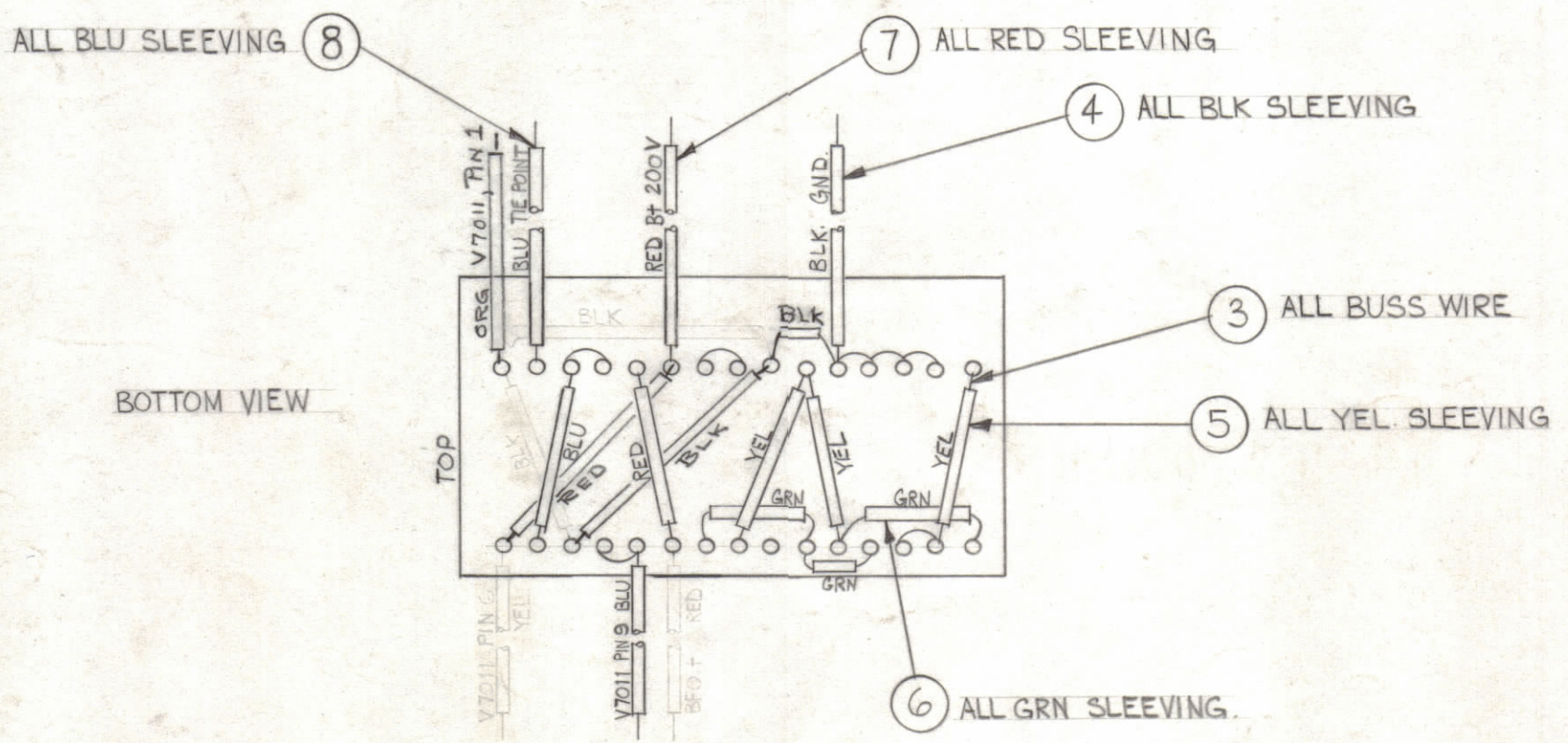
STAGE 3 - SUB-ASS'Y (A-2237-3).



TOP VIEW

NOTE:
ALL BUSS WIRE TO BE 3" LONG.
ALL SLEEVING TO BE 1/2" SHORTER.

* DO NOT SOLDER



BOTTOM VIEW

STAGE 4 - ELECTRICAL ASS'Y (A-2237-4).

| REQ. | ITEM | PART NO. | DESCRIPTION | SYMBOL |
|------|------|---------------|------------------------|--------|
| 1 | 21 | CM15F111J03 | CAPACITOR, FIXED MICA | C7080 |
| X | 20 | BS-100 | SOLDER, SOFT | |
| 1 | 19 | CM15F-331J03 | CAPACITOR, FIXED MICA | C7041 |
| 1 | 18 | RC42GF103J | RESISTOR, FIXED CARBON | R7063 |
| 1 | 17 | RC20GF104J | RESISTOR, FIXED CARBON | R7069 |
| 2 | 16 | RC20GF103J | RESISTOR, FIXED CARBON | |
| 1 | 15 | TF-228K15 | TRANSFORMER, PULSE | T7006 |
| 1 | 14 | 1N34 | DIODE, GERMANIUM | CR7001 |
| 1 | 13 | CM20F821G03 | CAPACITOR, FIXED MICA | C7043 |
| 1 | 12 | CM 20F561G03 | CAPACITOR, FIXED MICA | C7044 |
| 2 | 11 | RC20GF472J | RESISTOR, FIXED CARBON | |
| 1 | 10 | RC20GF821J | RESISTOR, FIXED CARBON | R7073 |
| 1 | 9 | RC20GF473J | RESISTOR, FIXED CARBON | R7071 |
| X | 8 | PX-104-6-.022 | SLEEVING, INSULATION | BLUE |
| X | 7 | | | RED |
| X | 6 | | | GREEN |
| X | 5 | | | YELLOW |
| X | 4 | PX-104-1-.022 | SLEEVING, INSULATION | BLACK |
| X | 3 | WL-100-8 | WIRE, BUSS | |
| 30 | 2 | TE-168-4B | TERMINAL, MINIATURE | |
| 2 | 1 | TE-108-1 | STAND-OFF, RIVET TYPE | |

R7064
R7068

R7065
R7070

| SYM | ZONE | DESCRIPTION | DATE | CH. NO. | DRAFTS | CHECKER | ENG. APP. |
|-----|------|--------------------------------------|---------|---------|--------|---------|-----------|
| B | | BUILD UP UPDATED | 2-27-67 | 17850 | LMLD | | |
| A | F6 | ADDED ITEM (21). C7080 MARKING ADDED | 7-30-63 | 9672 | AK | | |

UNLESS OTHERWISE SPECIFIED:
DIMENSIONS ARE IN INCHES
TOLERANCES ON
FRACTIONS ± 1/64 DECIMALS ± .005 ANGLES ± 1/2°

SCALE
MAXIMUM ALLOWABLE TOLERANCES HAVE BEEN DETERMINED AND ANY DEVIATIONS WILL BE CAUSE FOR REJECTION. REMOVE ALL BURRS & SHARP EDGES

| REQ. PER UNIT | MODEL | SECTION | ASS'Y. NO. | DATE |
|---------------|-------|---------|------------|---------|
| 1 | HFA-1 | AUDIO | | 7-26-62 |

| REQ. | ITEM | PART NO. | T. FAICLA | DESCRIPTION | SYMBOL |
|--|------|----------|-----------|-------------|--------|
| THE TECHNICAL MATERIEL CORP. MAMARONECK, NEW YORK | | | | | |
| STOCK SIZE | | | | | |
| TERMINAL BOARD & COMPONENT ASS'Y. (CHANNEL B) | | | | | |
| MATERIAL | | | | | |
| TYPE & TEMPER HEAT TREAT. SPEC. | | | | | |
| FINISH & SPEC. NO. | | | | | |

DRAWN: *MAF* CHECKED: *HO* FINAL APPROVAL: *BP*
A.R.F. A-2237 B

ELEC. DES. APP. MECH. DES. APP. SHEET OF