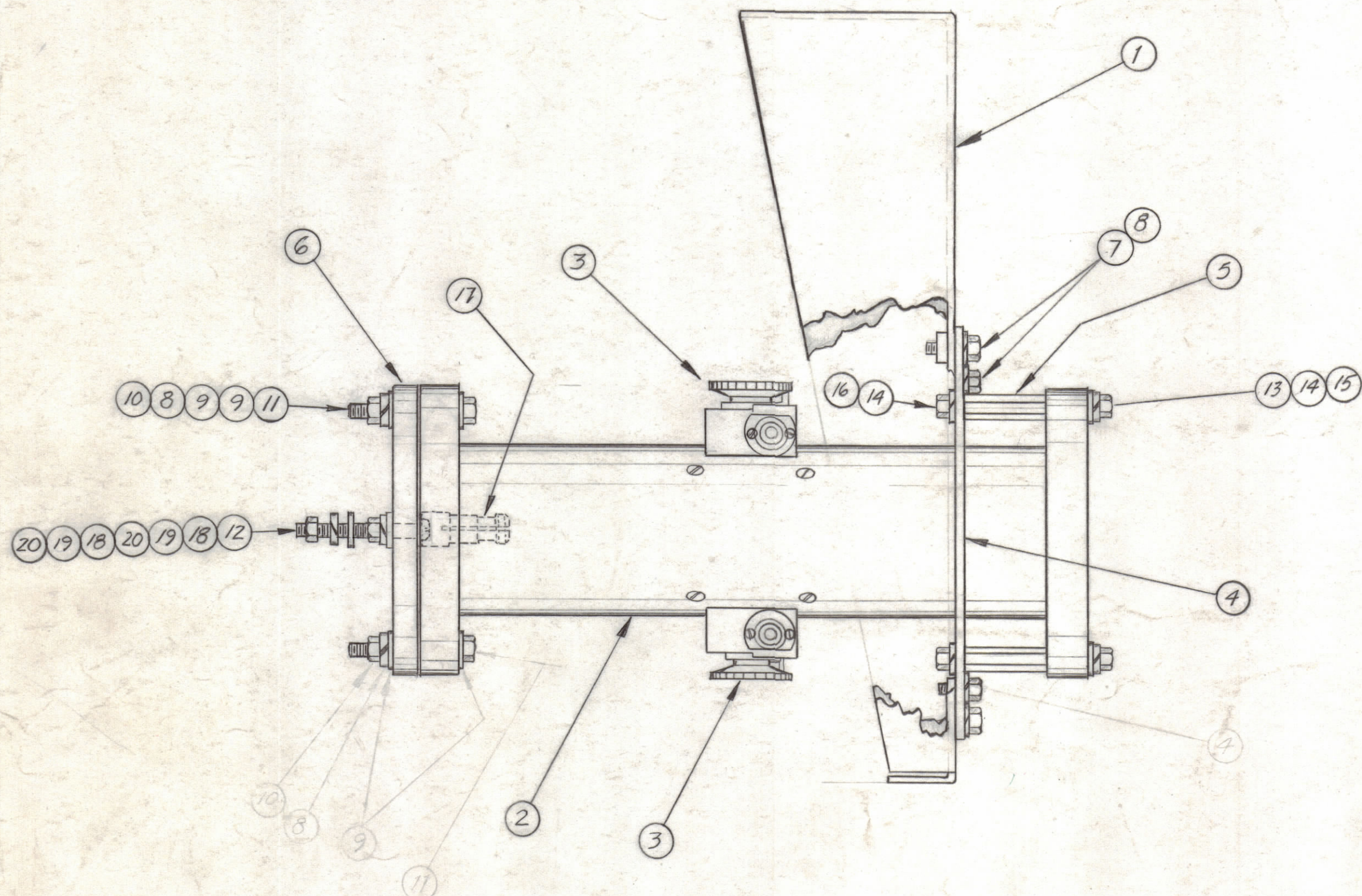


NOTICE TO PERSONS RECEIVING THIS DRAWING

THE TECHNICAL MATERIEL CORPORATION claims proprietary right in the material disclosed hereon. This drawing is issued in confidence for engineering information only and may not be reproduced or used to manufacture anything shown hereon without permission from THE TECHNICAL MATERIEL CORPORATION to the user. This drawing is loaned for mutual assistance and is subject to recall at any time.

Property of:
THE TECHNICAL MATERIEL CORPORATION
MAMARONECK, NEW YORK



REQ.	ITEM	PART NO.	DESCRIPTION	SYMBOL
2	20	NTH1032BN12	NUT, HEX.	
2	19	LWS10MRN	WASHER, LOCK, SPLIT	
2	18	FW10HBN	WASHER, FLAT	
1	17	PO-224-50	CONNECTOR, INNER, XMSN, LINE	
4	16	SCHH3118BNB	BOLT, MACHINE	
4	15	FW31HBN	WASHER, FLAT	
8	14	LWS31MRN	WASHER, LOCK SPLIT	
4	13	SCHH3118BN12	BOLT, MACHINE	
1	12	SCBP1032BN20	SCREW, MACHINE	
4	11	SCHH2520BN16	BOLT, MACHINE	
4	10	NTH2520BN14	NUT, HEX	
8	9	FW25HBN	WASHER, FLAT	
12	8	LWS25MRN	WASHER, LOCK, SPLIT	
8	7	SCHH2520BNB	BOLT, MACHINE	
1	6	PX-636	PLATE, INSULATOR	
4	5	TE3118AE55H	SPACER, THREADED	
2	4	MS-2702	PLATE, COUPLER MTG	
2	3	DD-104	ELEMENT, DETECTING	
1	2	DC-102	COUPLER, DIRECTIONAL METER	
1	1	MS-2701	BRACKET, COUPLER MTG	

SYM	ZONE	DESCRIPTION	DATE	CH. NO.	DRAFTS	CHECKER	ENG. APP.
B	-	BLDUP CLARIFIED AND UPDATED	12/31/63	10668			
A	B2	ITEM (5) WAS TE3118AE55H; (12) WAS SCHH1032BN20	1-17-62	6219	G.P.L.		

UNLESS OTHERWISE SPECIFIED:
DIMENSIONS ARE IN INCHES
TOLERANCES ON
FRACTIONS ± 1/64 DECIMALS ± .005 ANGLES ± 1/2°

SCALE
MAXIMUM ALLOWABLE TOLERANCES HAVE BEEN DETERMINED AND ANY DEVIATIONS WILL BE CAUSE FOR REJECTION. REMOVE ALL BURRS & SHARP EDGES

REQ. PER UNIT	MODEL	SECTION	ASS'Y. NO.	DATE
1	KIT-113			12-12-61

THE TECHNICAL MATERIEL CORP. MAMARONECK, NEW YORK			
STOCK SIZE			
COUPLER & BRACKET ASSY			
MATERIAL			
TYPE & TEMPER	HEAT TREAT. SPEC.	FINISH & SPEC. NO.	
DCB	aa	A-2233	
ELEC. DES. APP.	MECH. DES. APP.	SHEET	OF
		1	B