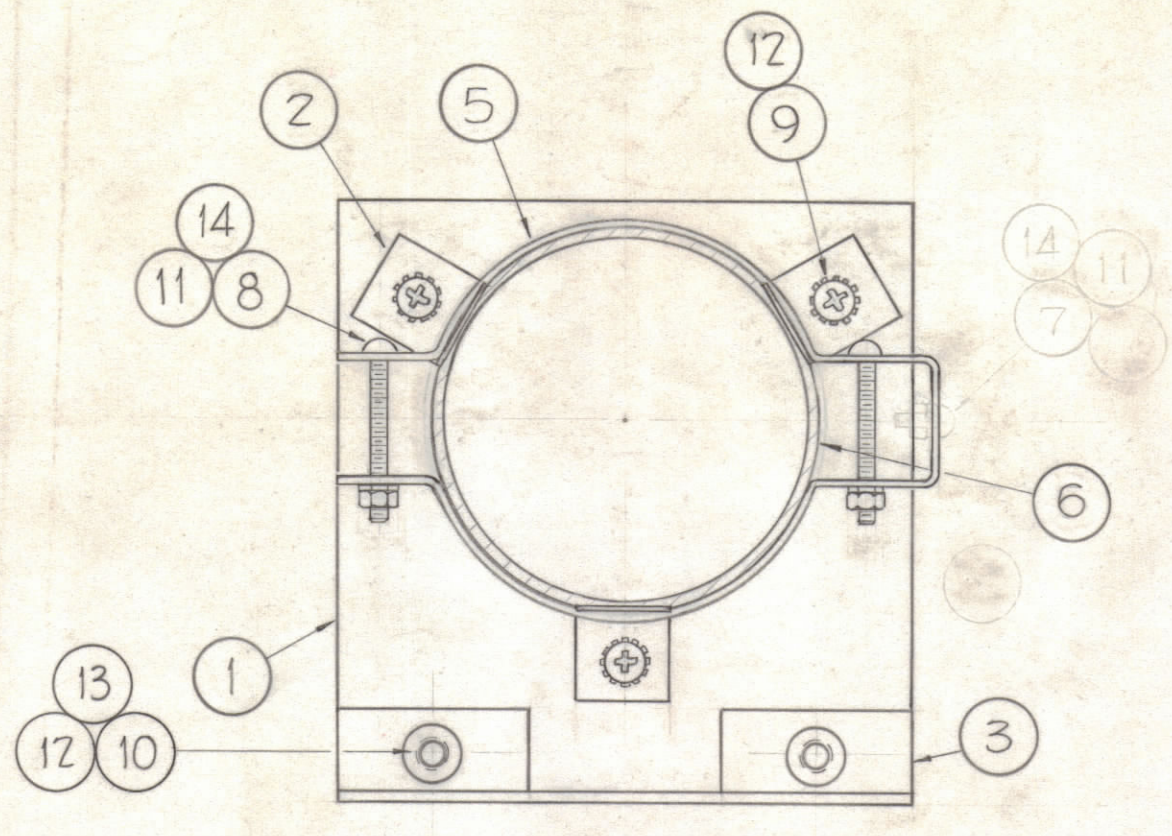
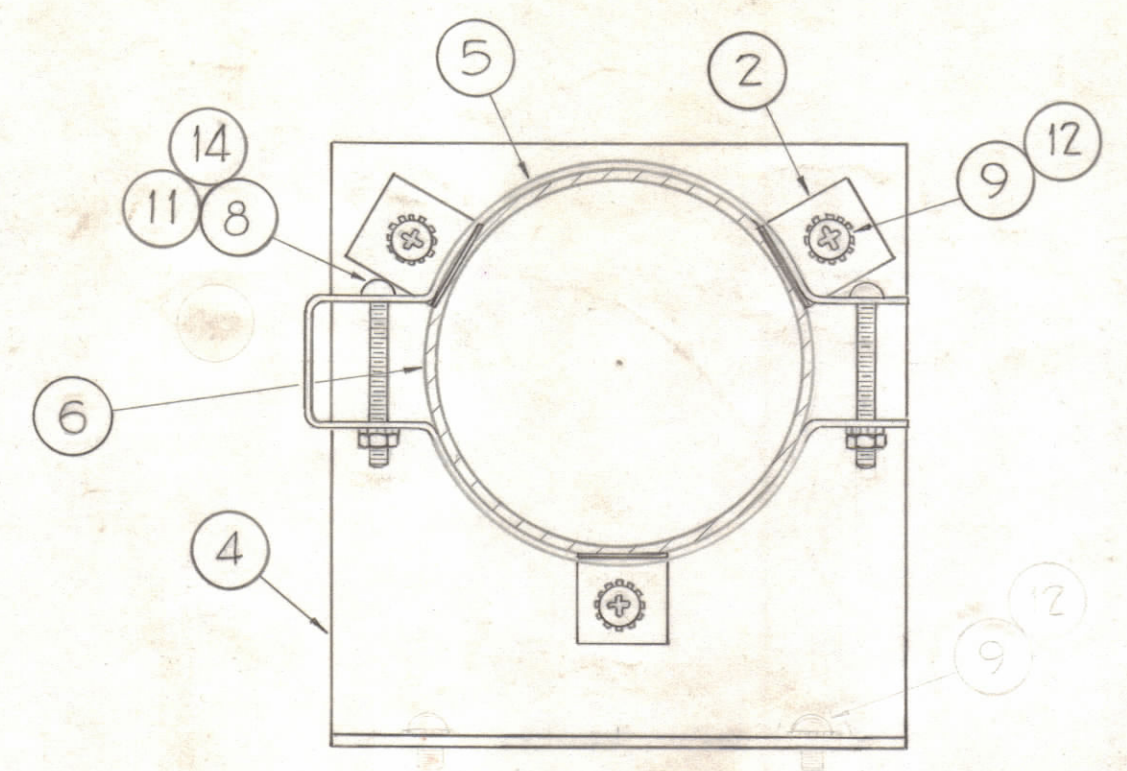


NOTICE TO PERSONS RECEIVING THIS DRAWING  
 THE TECHNICAL MATERIEL CORPORATION claims proprietary right in the material disclosed hereon. This drawing is issued in confidence for engineering information only and may not be reproduced or used to manufacture anything shown hereon without permission from THE TECHNICAL MATERIEL CORPORATION to the user. This drawing is loaned for mutual assistance and is subject to recall at any time.

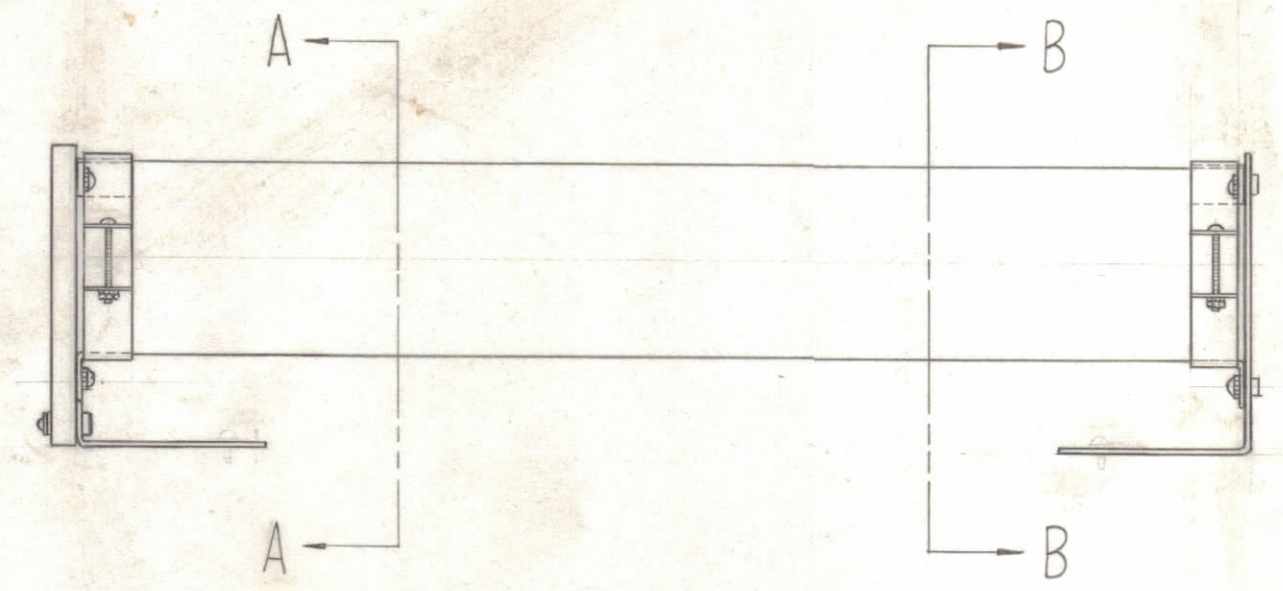
Property of:  
 THE TECHNICAL MATERIEL CORPORATION  
 MAMARONECK, NEW YORK



SECTION A-A



SECTION B-B



4	14	NTH0632BN8	NUT, HEXAGON
2	13	FW08HBN	WASHER, FLAT
8	12	LWE08MRN	LOCK WASHER, EXTERNAL TOOTH
4	11	LWE06MRN	LOCK WASHER, EXTERNAL TOOTH
2	10	SCBP0832BN9	SCREW, MACHINE
6	9	SCBP0832BN5	SCREW, MACHINE
4	8	SCBP0632BN16	SCREW, MACHINE
1	6	RD119-300-250	RESISTOR, FIXED, 250 WATTS
2	5	MS-958	RESISTOR CLAMP
1	4	MS-2745	BRACKET, RESISTOR SUPPORT
1	3	MS-2744	BRACKET, INSULATOR SUPPORT
6	2	MS-2743	CONTACT, RESISTOR
1	1	PX-637	INSULATOR, RESISTOR SUPPORT

REQ. ITEM	PART NO.	DESCRIPTION	SYMBOL
THE TECHNICAL MATERIEL CORP. MAMARONECK, NEW YORK			
RESISTOR ASSEMBLY (MODEL TER 250/300U)			
MATERIAL		John C. Biele	
TYPE & TEMPER		HEAT TREAT. SPEC.	FINAL APPROVAL
FINISH & SPEC. NO.		ELEC. DES. APP.	MECH. DES. APP.
SHEET OF		A-2225 B	

1	TER250-300U	A-2225	11-4-61
REQ. PER UNIT	MODEL	SECTION	ASS'Y. NO.
USED ON			

SYM	ZONE	DESCRIPTION	DATE	CH. NO.	DRAFTS	CHECKER	ENG. APP.
B		IT 9 WAS 'BN4'; IT 10 WAS 'BN8	2.3.67	1777B	LHW	OCF	OCF
A		ITEMS (2) WAS BN3, REY III-11-5 WAS REY (12) WAS REY (14) 5 WAS REY ITEM (6) WAS RR-119-300R-250W, ITEM (7) SCBP0632BN4 DELETED	11-22-61	5942	GDL	OCF	OCF

UNLESS OTHERWISE SPECIFIED:  
 DIMENSIONS ARE IN INCHES  
 TOLERANCES ON FRACTIONS ± 1/64 DECIMALS ± .005 ANGLES ± 1/2°  
 SCALE (DO NOT SCALE)  
 MAXIMUM ALLOWABLE TOLERANCES HAVE BEEN DETERMINED AND ANY DEVIATIONS WILL BE CAUSE FOR REJECTION. REMOVE ALL BURRS & SHARP EDGES