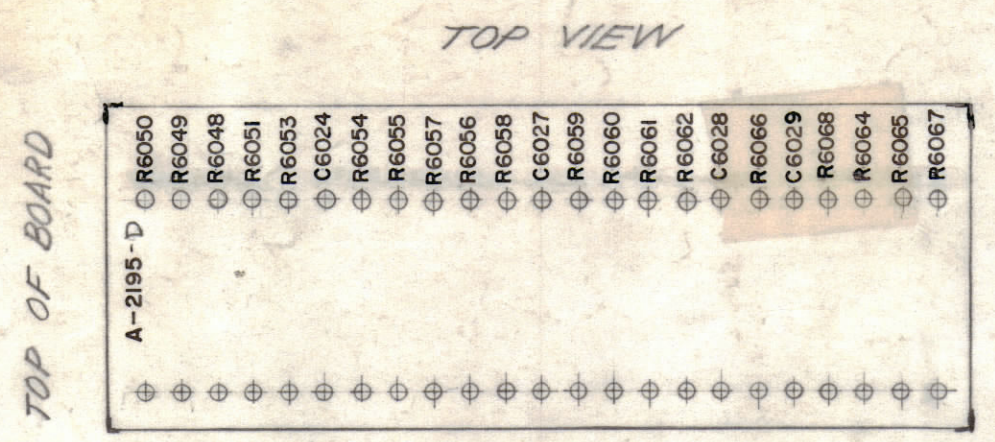
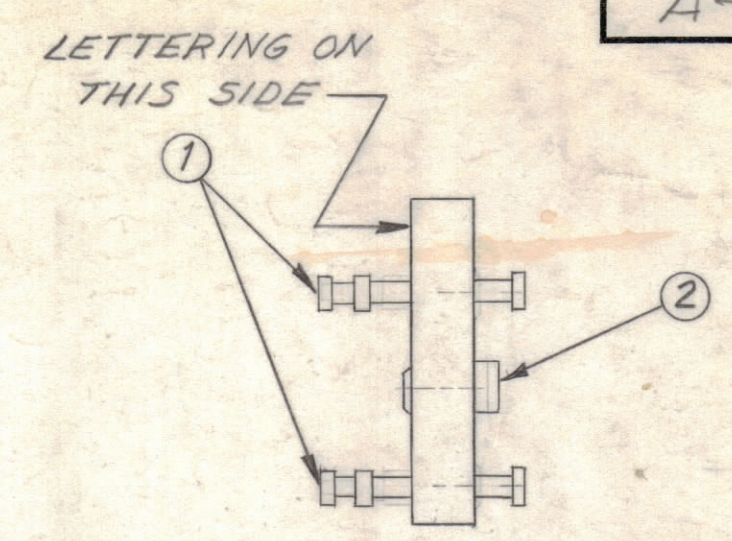


MATERIAL-1/16 PHENOLIC XXXP NATURAL
MACHINING (A-2195) STAGE 1



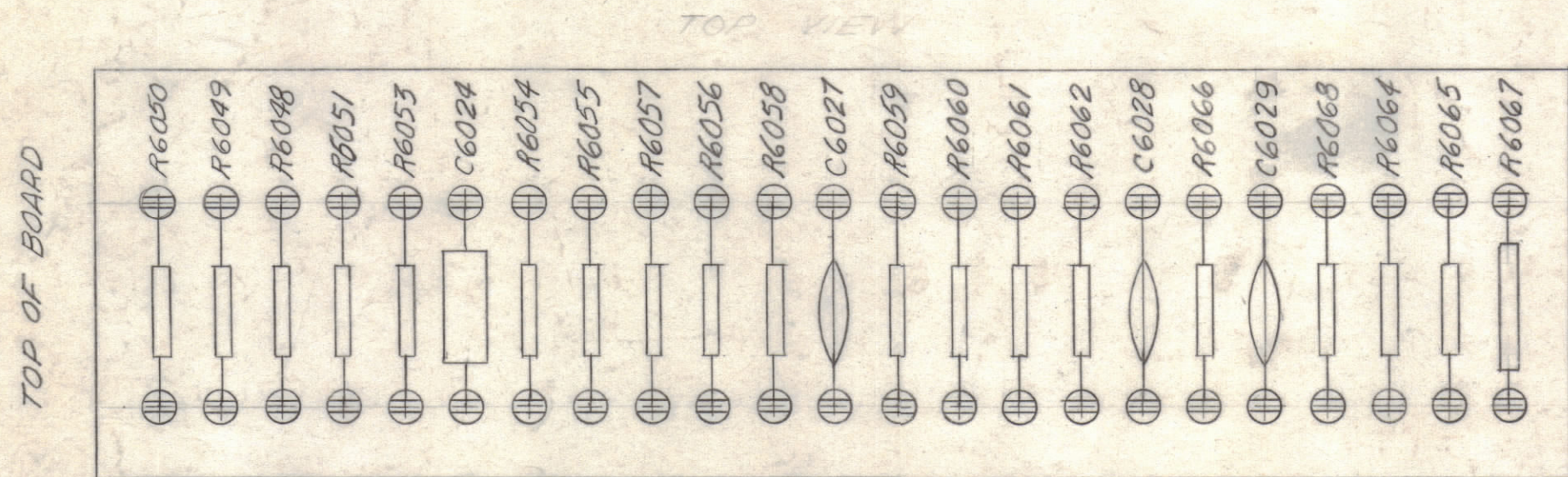
ALL LETTERING APPROX. 3/32 BLACK GOTHIC
LETTERING (A-2195) STAGE 2

MARKING PROCESS: AS PER TMC SPECIFICATION S-727

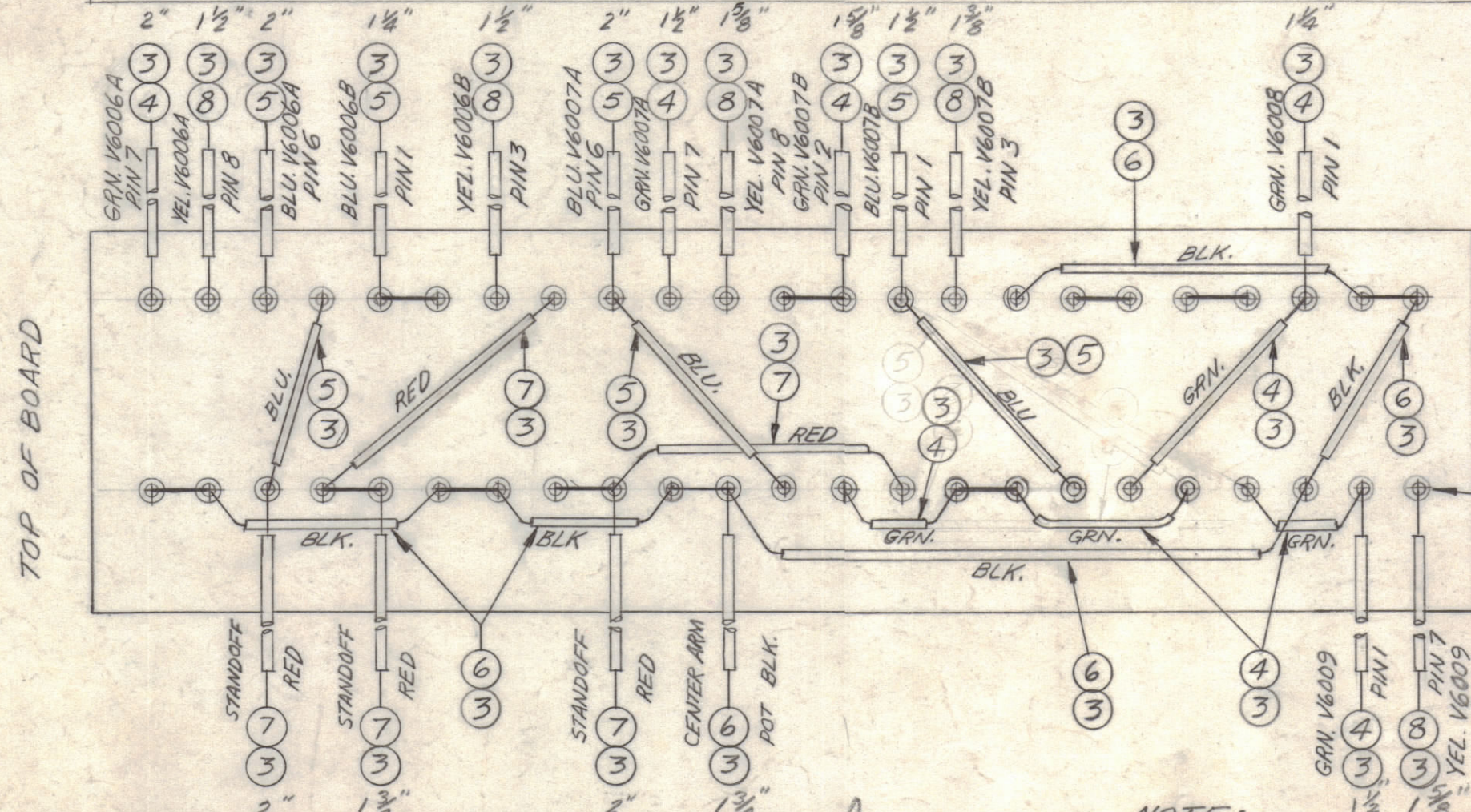


SUB-ASSEMBLY (A-2195) STAGE 3

FINAL ASSEMBLY (A-2195) STAGE 4



TOP VIEW



BOTTOM VIEW

NOTE:
SOLDER ALL TERMINALS
AS REQUIRED

NOTE:
BUSSWIRE MUST EXTEND 1/2" LONG
1/2" BEYOND SLEEVING.
SLEEVING 1/2" SHORTER

REQ.	ITEM	PART NO.	DESCRIPTION	SYMBOL
3	20	CC-100-24	CAPACITOR, FIXED, CERAMIC, D18C	C-6024
1	19	CM-20C132K	CAPACITOR, FIXED, MICA	C-6029
2	18	RC20GF-333K	RESISTOR, FIXED, COMP.	R-6057 R-6053
3	17	102K		R-6059 R-6048
3	16	105K		R-6057 R-6053
1	15	123K		R-6048
2	14	103K		R-6057 R-6053
2	13	392K		R-6061
1	12	393K		R-6062 R-6060
2	11	470K		R-6068 R-6066
2	10	RC20GF-474K	RESISTOR, FIXED, COMP.	R-6065 R-6064
1	9	RC32GF331K	RESISTOR, FIXED, COMP. FEED	R-6067
X	8	PX-104-2-022	INSULATION SLEEVING	YEL.
X	7	PX-104-3-022		RED
X	6	PX-104-1-022		BLK
X	5	PX-104-6-022		BLUE
X	4	PX-104-4-022	INSULATION SLEEVING	GREEN
X	3	WL-100-8	WIRE, BUSS BAR, TINNED	
3	2	TE-108-1	STANDOFF, RIVET TYPE	
46	1	TE-168-4B	TERMINAL, MINIATURE	

SYMBOL	ZONE	DESCRIPTION	DATE	CH. NO.	DRAFTS	CHECKER	ENG. APP.
E	~	LENGTHS CORRECTED NOTE REVISED	12-1-65	15270	BYV.		
D	~	IN BUILD-UP PART NOS. & DESCS. CLARIFIED.	8-28-63	9856	HL.		
C	~	ITEM (9) WAS RC 20GF 331K					
C	~	LEAD FROM R6050 TO C6028 WAS TO C6029					
C	~	JUMPER DELETED BETWEEN R6052 & C6029					
C	~	JUMPER ADDED BETWEEN R6052 & C6029					
B	D3	On Item (17) Sym. R6049 Was R6050; Jumper Added Bet. R6056 & R6058	2-26-62	6411	IL		
B	D3	On Item (16) Sym. R6050 Was R6049; Quan. Was 2 Req.					
A	1	On Stage 2, "Dashes" Deleted, Lettering Closed Up	11-15-61	5892	IL		
A	1	C6029 Was C6027; Item 2 Was TE-108-7					

UNLESS OTHERWISE SPECIFIED:
DIMENSIONS ARE IN INCHES
TOLERANCES ON FRACTIONS ± 1/64 DECIMALS ± .005 ANGLES ± 1/2°
SCALE: MAXIMUM ALLOWABLE TOLERANCES HAVE BEEN DETERMINED AND ANY DEVIATIONS WILL BE CAUSE FOR REJECTION. REMOVE ALL BURRS & SHARP EDGES

REQ. PER UNIT	MODEL	SECTION	ASS'Y. NO.	DATE
1	SBS-1			10-3-61

TYPE & TEMPER	HEAT TREAT. SPEC.	FINISH & SPEC. NO.	ELEC. DES. APP.	MECH. DES. APP.	SHEET OF
AS NOTED					A-2195 E